

Michael Thompson

**General Manager
Infrastructure Services**

Delivering faster, never at the expense of safety

Project field level
hazard assessments

21,921*

30,158

↑ 36%

61,170

↑ 104%

98,513

↑ 61%

Project site inspections

1,547

2,361

↑ 52%

5,061

↑ 114%

6,109

↑ 21%

2022

2023

2024

2025

*Estimated value

Bearspaw South Feeder Main incident 2025



Independent review & our response

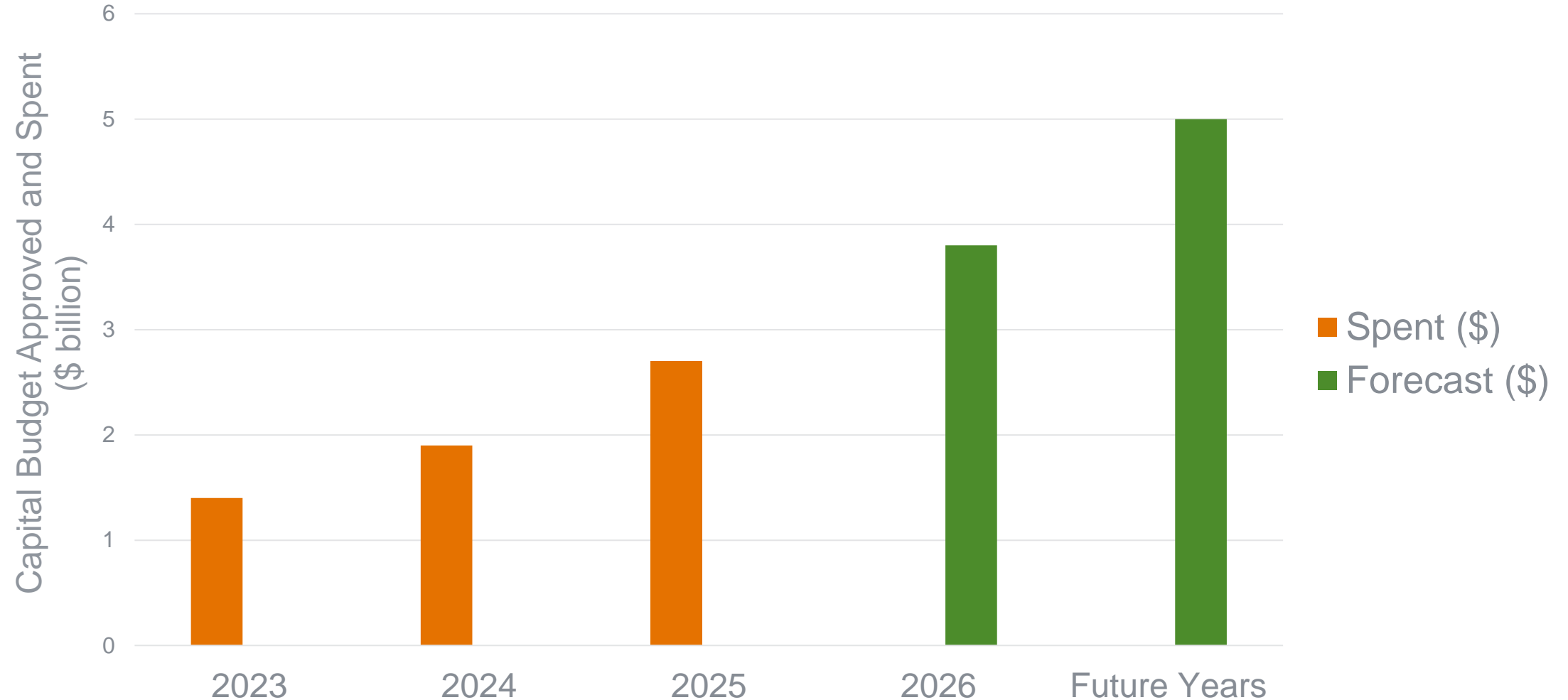


- Focus: **systems, structures and decision-making.**
- We're **changing how we plan, prioritize and deliver projects.** In 2026, those changes are accelerating.
- Our **Corporate Asset Management Plan** and **City-wide 10-year Capital Infrastructure Plan** are the roadmap.
- We're supporting our people and our partners with **clearer priorities, better governance and stronger partnerships** to deliver the work.



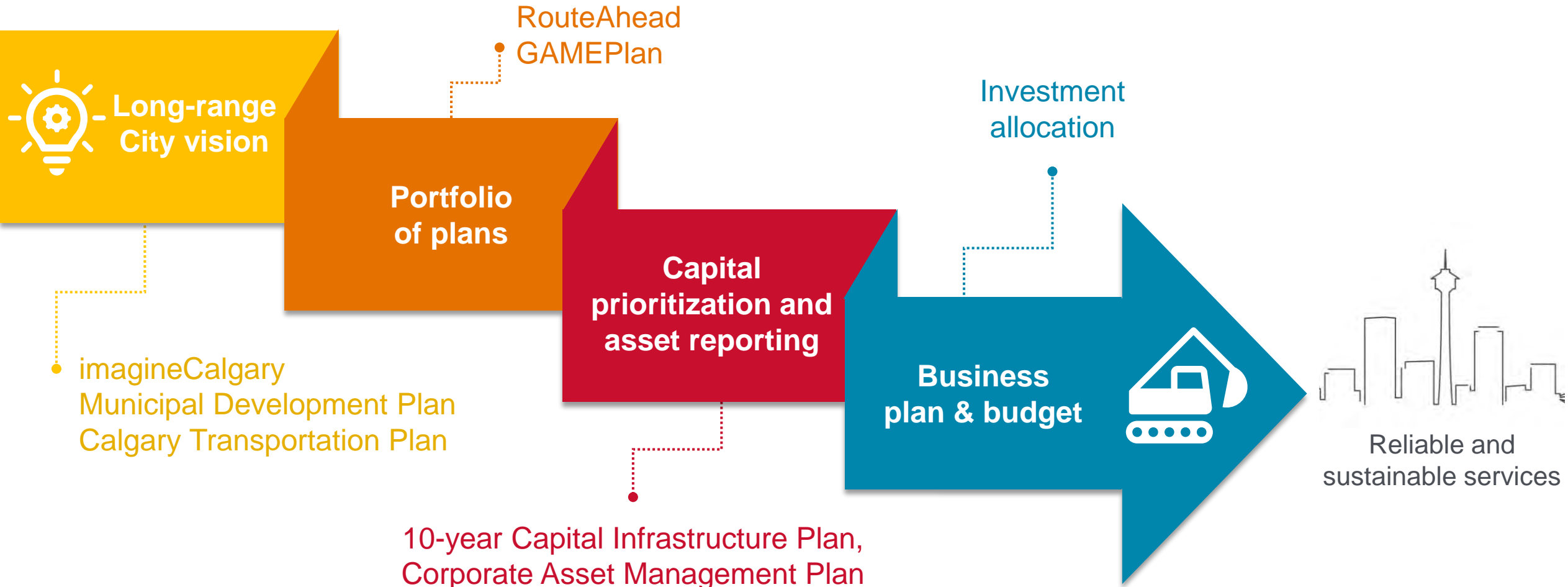
Capital delivery & future need

Investment increased >250% over last four years



How we prioritize projects

Vision drives strategy, strategy drives budget



Our Infrastructure Services leadership



Infrastructure Services
General Manager
Michael Thompson



Real Estate & Development Services

Director:
Campbell Berry



Project Development

Director:
Sarah Huber



Public Spaces Delivery

Director:
Kerensa Fromherz



Utilities Delivery

Director:
Anne Cataford



Green Line LRT SE

Director:
Wendy Tynan

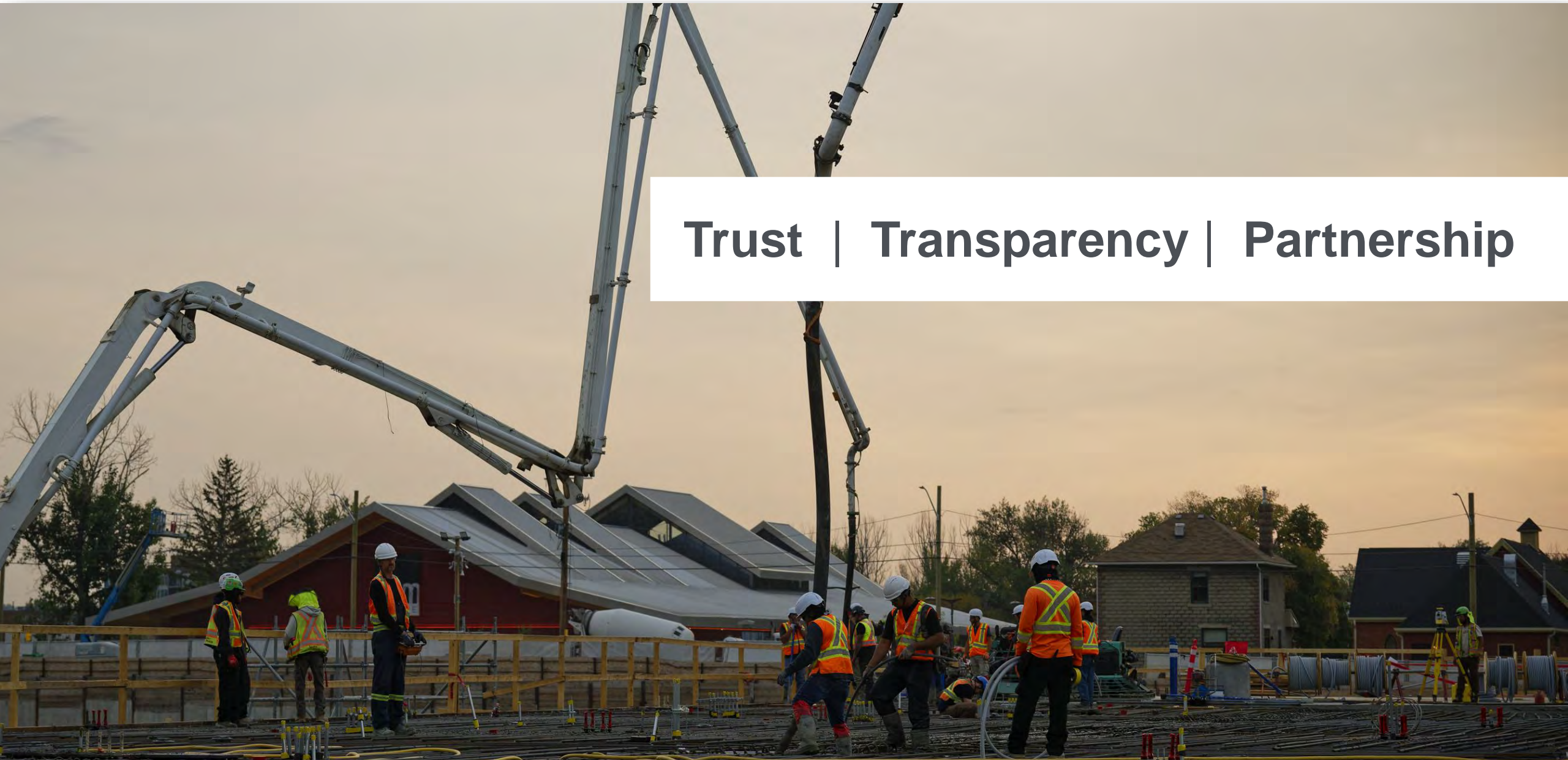


Capital Planning & Business Services

Director:
Ryan Vanderputten

What to expect from us & my ask of you

Trust | Transparency | Partnership





Questions?