

FEBRUARY 2017 FLEET UTILIZATION AND CONCERNS

Table 2:

Estimated Taxi Revenues (Distance-only)*				
	Feb 2014	Feb 2015	Feb 2016	Feb 2017
Supply (in total hours worked)	527,595	573,728	614,694	544,227
Demand (in trips)	639,331	602,940	523,274	542,847
Avg distance (kms)	8.3	7.9	7.9	7.8
Avg duration (mins)	14	14	14	15
Total estimated distance-only revenue	\$10,357,162	\$10,189,686	\$8,791,003	\$9,011,260
Avg hourly distance-only revenue	\$19.63	\$17.76	\$14.30	\$16.56

*Revenues are before operating expenses and are distance-only; wait time @ \$0.56/min for stopped/slow traffic and gratuities are not included. 2014 October meter rate increase. Meter rate set as a maximum effective 2016 April 4.

Table 3:

2016-2017 DISPATCH RESPONSE TIMES								
Month	DISPATCH TRIPS	Total within 15 min	% within 15 min	0-5 min	5-10 min	10-15 min	15-20 min	>20 min
2016 Jan	255,880	232,370	91%	63,165	118,124	51,081	14,861	8,649
Feb	227,102	207,509	91%	59,683	104,427	43,399	12,097	7,496
Mar	239,453	219,244	92%	65,112	109,597	44,535	12,468	7,741
Apr	236,901	218,056	92%	64,800	109,636	43,620	11,628	7,217
May	248,497	228,536	92%	70,748	112,772	45,016	12,036	7,925
Jun	204,574	186,635	91%	55,984	92,988	37,663	10,246	7,693
Jul	264,060	241,648	92%	74,341	119,180	48,127	13,331	9,081
Aug	240,503	220,796	92%	70,557	108,189	42,050	11,345	8,362
Sep	249,754	227,093	91%	69,617	111,996	45,480	12,942	9,719
Oct	272,007	247,692	91%	74,350	122,694	50,648	14,018	10,297
Nov	240,981	219,861	91%	70,081	107,481	42,299	11,563	9,557
Nov	240,981	219,861	91%	70,081	107,481	42,299	11,563	9,557
2017 Jan	273,153	242,882	89%	66,867	120,111	55,904	17,036	13,235
Feb	231,050	204,305	88%	56,392	101,188	46,725	15,137	11,608

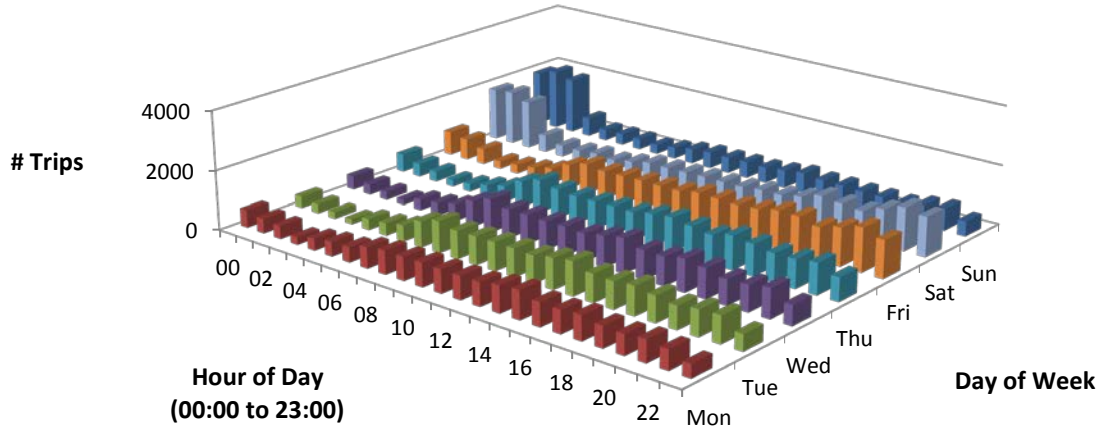
Wheelchair accessible dispatch response time

For February 2017, it is estimated that the taxi industry provided 1,259 on demand wheelchair accessible trips with an estimated arrival time of within approximately 15 minutes 77 per cent of the time.

FEBRUARY 2017 FLEET UTILIZATION AND CONCERNS

Table 4:

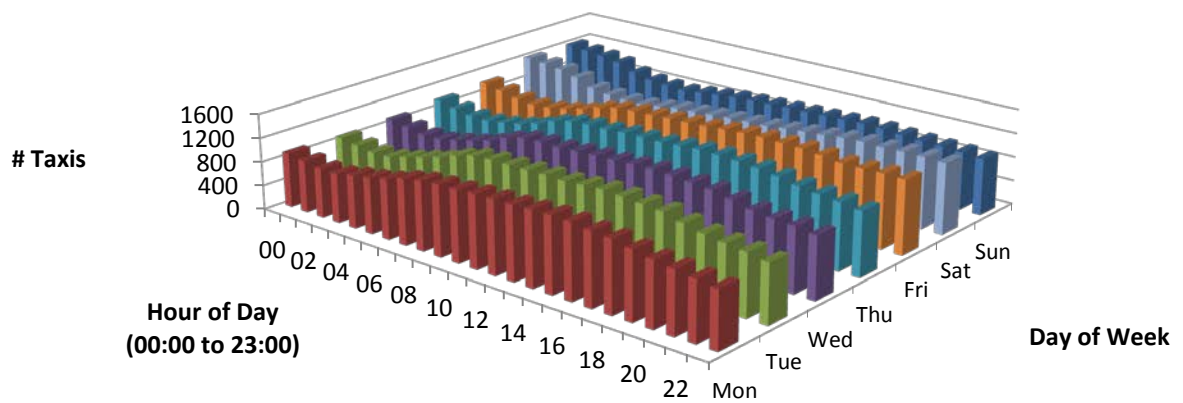
February 2017 Trip Counts by Hour of Day and Day of Week



	00	01	02	03	04	05	06	07	08	09	10	11	12	13	14	15	16	17	18	19	20	21	22	23
Mon	590	491	443	254	398	486	511	698	791	783	800	783	787	792	894	952	786	761	816	704	670	731	660	441
Tue	399	311	226	174	371	419	532	862	1061	932	950	954	947	916	1032	1127	935	906	966	874	769	867	899	546
Wed	463	351	269	188	365	427	566	864	1110	960	970	943	963	924	1037	1159	974	963	1086	992	845	877	989	671
Thu	614	442	344	222	263	386	534	880	1103	982	930	934	953	952	1076	1148	1056	962	1138	1059	953	966	1049	795
Fri	825	719	532	261	304	372	513	827	1026	950	973	989	992	1000	1111	1101	1076	1127	1266	1267	1109	1276	1476	1276
Sat	1799	1856	1657	589	389	378	432	384	486	617	619	637	662	659	665	739	753	872	1085	1021	961	1203	1448	1339
Sun	1877	2077	1923	642	372	380	367	315	381	486	549	537	550	536	600	683	620	616	582	574	555	681	746	506

Table 5:

2017 February Vehicle Count by Hour of Day and Day of Week



	00	01	02	03	04	05	06	07	08	09	10	11	12	13	14	15	16	17	18	19	20	21	22	23
Mon	906	867	818	824	878	926	988	1083	1144	1172	1180	1203	1215	1217	1233	1242	1230	1193	1164	1105	1048	1011	969	926
Tue	878	829	787	797	870	953	1041	1155	1235	1259	1262	1267	1274	1265	1289	1306	1291	1266	1239	1157	1087	1043	1008	954
Wed	905	851	799	806	865	935	1023	1148	1233	1251	1246	1267	1284	1288	1306	1316	1302	1281	1253	1187	1113	1073	1054	1011
Thu	965	898	845	841	881	940	1028	1145	1224	1254	1254	1278	1285	1283	1308	1329	1324	1311	1283	1237	1175	1131	1099	1053
Fri	1002	946	879	848	862	922	994	1099	1170	1201	1210	1234	1244	1258	1286	1304	1315	1305	1299	1273	1227	1226	1234	1226
Sat	1204	1178	1142	1070	946	903	886	885	923	969	991	1012	1032	1047	1062	1089	1119	1145	1181	1194	1183	1199	1195	1185
Sun	1194	1167	1136	1085	968	901	876	859	891	928	963	979	991	1004	1015	1024	1037	1051	1043	1017	1002	988	974	946

FEBRUARY 2017 FLEET UTILIZATION AND CONCERNS

STAKEHOLDER ENGAGEMENT OR RESEARCH CONDUCTED

Date reporting requirements are mandated in Livery Transport Bylaw 6M2007. Through an automated file transfer process, required GPS and Taximeter data is received daily.

Feedback on this report is welcome by way of the LTAC process or via email (LTAC@calgary.ca).

CURRENT AND FUTURE FINANCIAL IMPACTS

None.

<h3>RECOMMENDATIONS FOR LTAC TO CONSIDER</h3>
--

To receive this report for information.

SUBMISSIONS PRESENTED BY: Marcia Andreychuk, LTAC Business Analyst