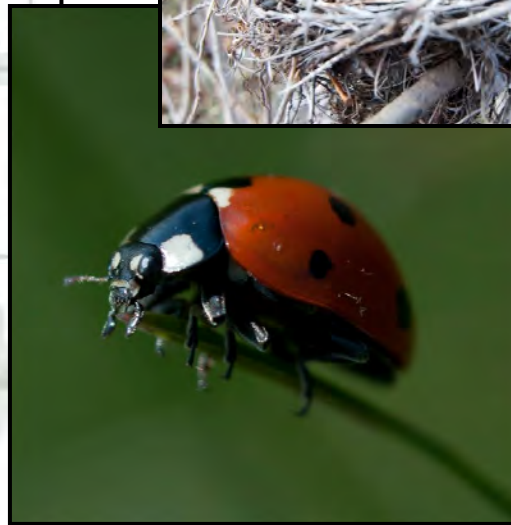


Enmax Legacy Parks Program 3 — Forest Lawn Creek Park



Forest Lawn Creek from Elliston to Ralph Klein Park

Project: This 'missing link' is part of the Greenway Project Phase 2 and is being developed by The City. Forest Lawn Creek has a diverse mix of riparian shrub communities and significant native prairies. Wetlands associated with the creek attract a large number of waterfowl during spring and fall migrations. Through the use of the existing Environmental Reserve, as well as judicious placement of Municipal Reserve, Forest Lawn Creek will provide a 100 block pathway and park link between Elliston and Ralph Klein Regional Parks.

Budget: \$1.7M construction of 'non-pathway' park site development.

Timeline: Coordination is ongoing with The City and Parks Foundation, Calgary.

Status: On hold, awaiting funding for final design and construction.

Benefits: This park is part of the *Rotary Mattamy Greenway* with Parks Foundation, Calgary. The City committed to undertake this missing link between Greenways Phase 1 and Greenways Phase 2 as work is on the environmental reserve adjacent to City owned future industrial development.

October 2014

