

# The Future of 16 Avenue N.W.

The City is exploring the future of 16 Avenue N.W. by developing a streetscape master plan for the 16 Avenue N.W. Main Street in Montgomery, and a transportation corridor plan for 16 Avenue N.W. from Sarcee Trail to Crowchild Trail.

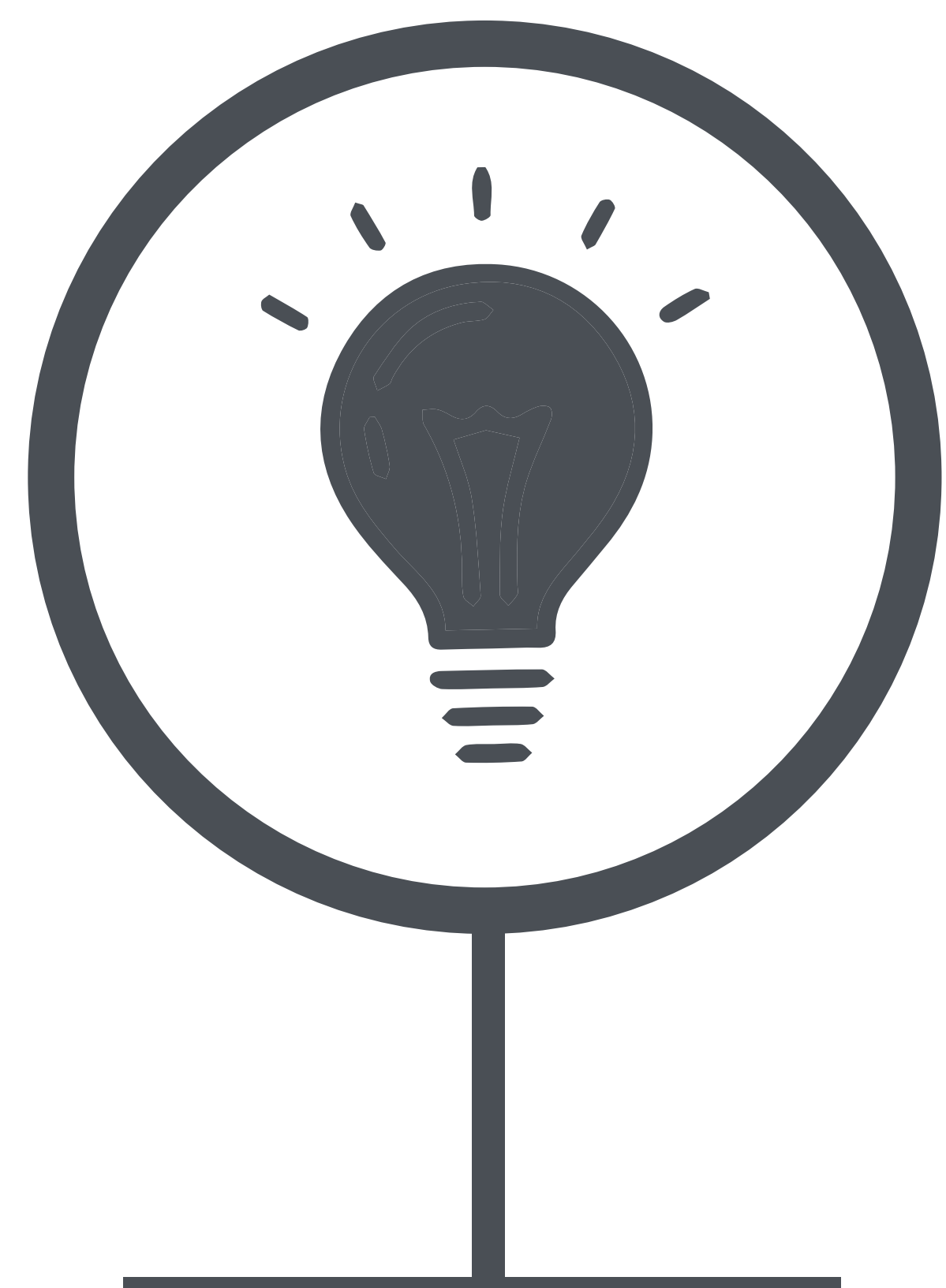
We invite you to review materials describing the Phase 2: Explore concept options for the future of 16 Avenue N.W. at: [calgary.ca/16avenuenw](https://calgary.ca/16avenuenw)

Provide your input using The City's online engage portal starting October 26, 2020.





# Project Timeline



## DISCOVER PHASE

Project Initiation and Definition

SPRING TO FALL 2020

Confirm community values and vision for the project and begin technical data collection and analyses

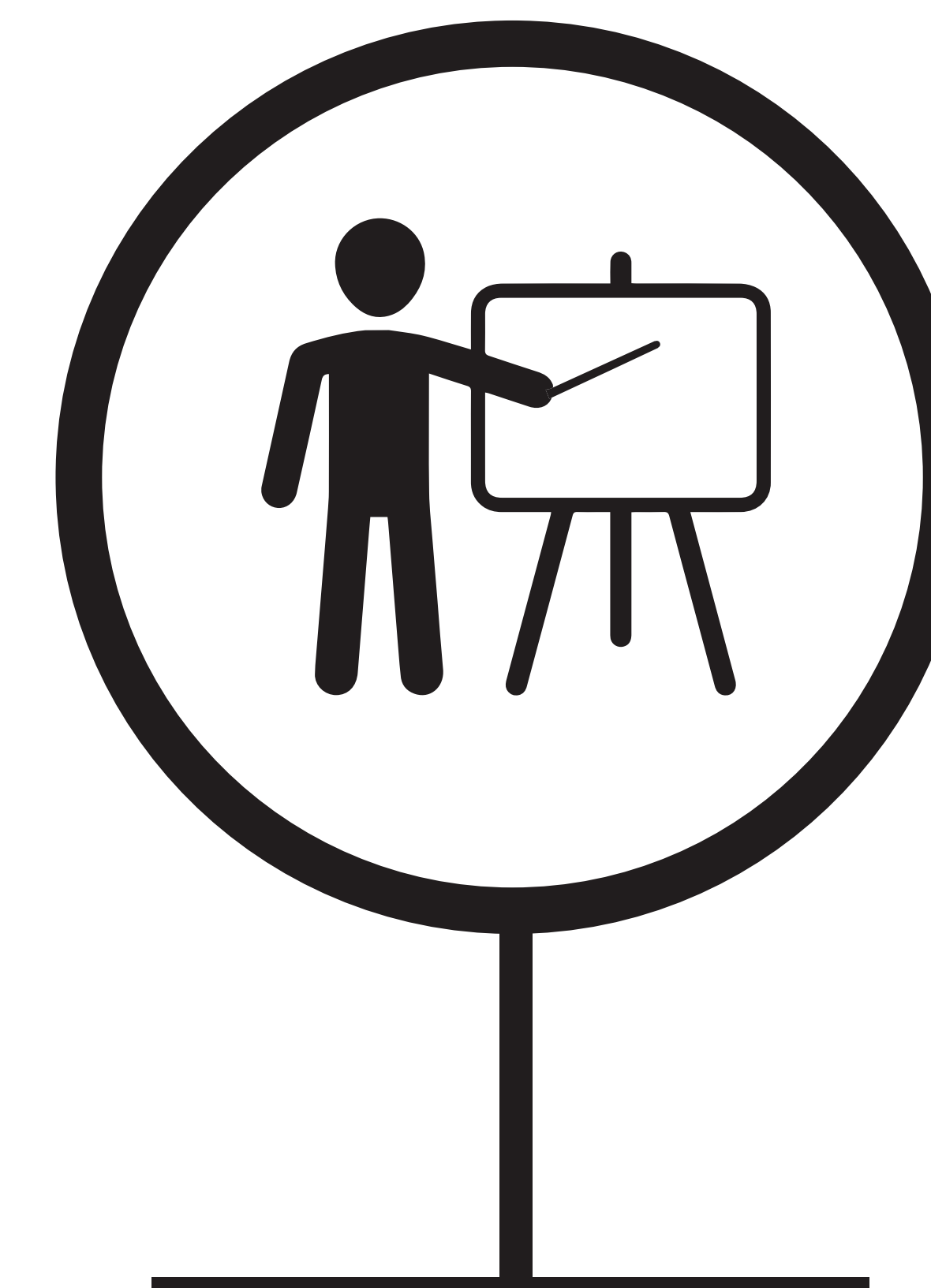


## EXPLORE PHASE

Concept Development and Analysis

FALL TO WINTER 2020

Gather feedback on concept options for the corridor study and streetscape master plan, developed using stakeholder input from the Discover phase together with City technical expertise

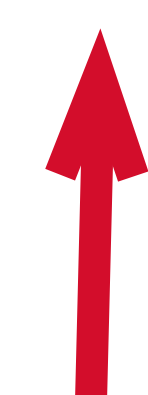


## REVEAL PHASE

Preferred Concept Selection

WINTER TO SPRING 2021

Develop preferred design concepts for the corridor study and streetscape master plan and present to the community and stakeholders. Present recommendations for corridor study to Council for approval



We are here



# Main Streets Program

The Main Streets Program is one of the ways that The City of Calgary is working to make our city “a great place to make a living, and a great place to make a life.” Our program shares The City’s common purpose of “making life better every day” by implementing a comprehensive process to transform our main streets into places where people want to live, work and play.

## Main Streets Approach



## What is a Streetscape Master Plan?

A streetscape master plan creates a high-level design concept that clearly communicates the “big moves”. It focuses on place-making and creating vibrant public spaces that put a priority on sociability, accessibility, connectivity, comfort, identity, and activity. The program vision and core principles for the streetscape master plan are as follows:

### Vision

Main Streets are places where citizens come together. They allow us to travel less and live more by providing the things we need right in our own communities.

### Core Principles

Main Streets are resilient, adaptable, and attractive places that:




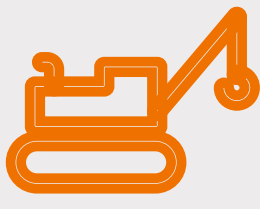
- Celebrate the character of the community;
- Encourage diversity of businesses, buildings and residents;
- Create a vibrant destination, and;
- Improve public health.



# Transportation Corridor Study Information

Transportation corridor studies are typically completed 10 to 30 years in advance of construction to identify issues and opportunities such as how much room is needed, where will the road go, or what upgrades are needed.

## Why does 16 Avenue N.W. need a transportation corridor study?

	<b>Network Planning</b> Timeline: 30+ years
	Identifies the role of the road in the transportation network, where it will go and how it will move people, goods and services.
	<b>Roadway Planning</b> Timeline: 10+ years
	Based on the road’s role, roadway planning determines how much room is needed for the road, what upgrades are required, construction staging, and how to accommodate various modes of travel. An estimate is produced and the recommendations become projects that are prioritized for funding.
	<b>Funding</b> Timeline: 5 – 10 years
	Projects are prioritized based on key directional documents, like Investing in Mobility, that help plan for the growth of Calgary and the results from citizen engagement activities like Action Plan. A budget is allocated to projects that are identified as priorities.
	<b>Engineering/Construction</b> Timeline: project specific
	Refines details like utility placement, curbs, sidewalks, and boulevards. Work begins and the project is managed for cost, schedule and quality.

### Improve the transportation corridor:

- 16 Avenue N.W., between Sarcee Trail and Crowchild Trail, varies widely in terms of:
  - Differing posted speed limits, road classifications, land uses, number of lanes, accommodation of transit and active modes of travel; and,
  - The number of planning and constructions projects in various places along the corridor in recent years.
- A unified plan can allow infrastructure investment to better support the dual nature of 16 Avenue N.W. as both a major city-wide transportation corridor and as a community Main Street in Montgomery.

### Planning for growth:

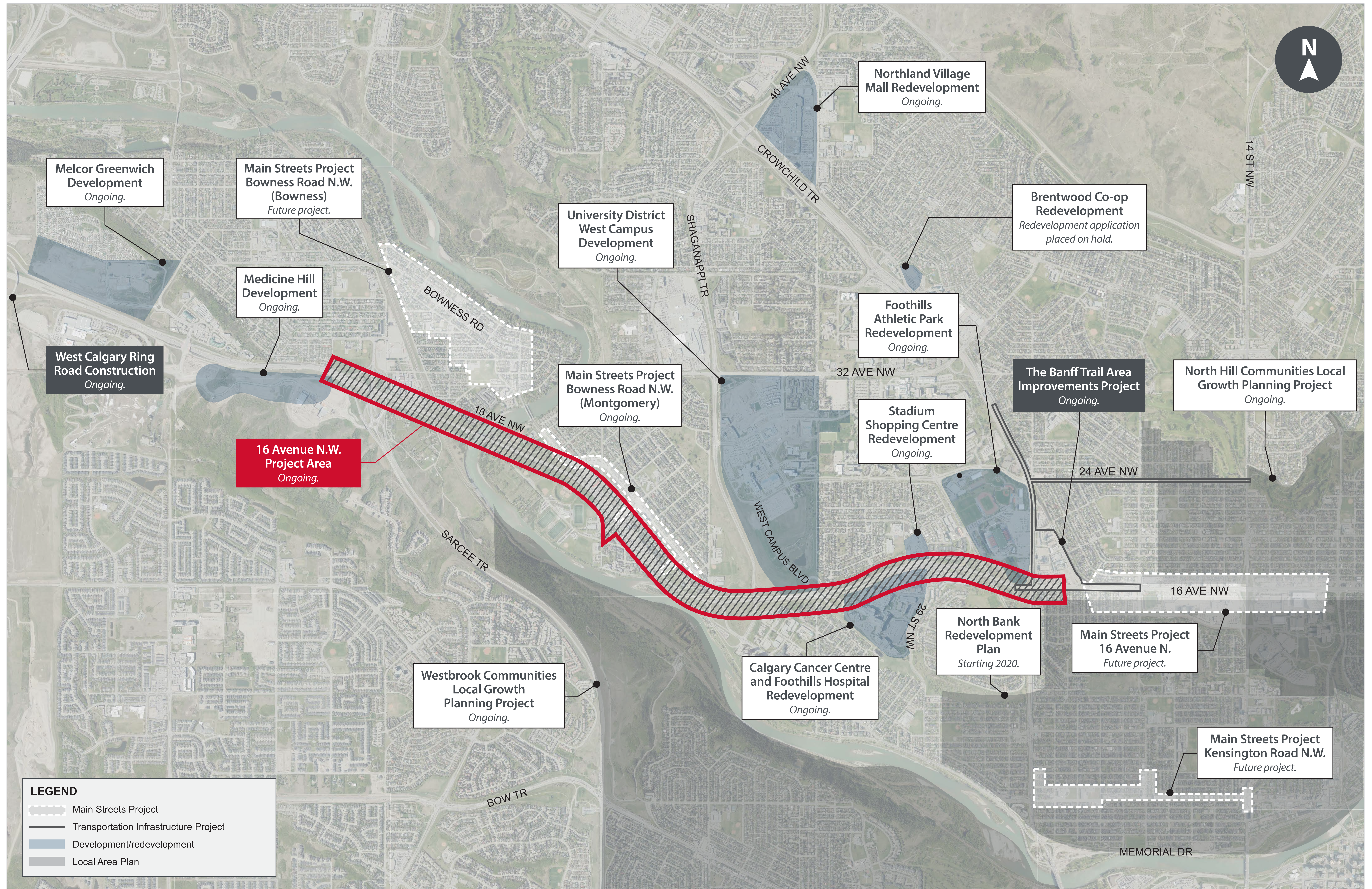
- Over the next 30-60 years, Calgary’s population is expected to more than double. The study will explore with the community how to address issues arising today and plan for future transportation needs as the city grows.

### New possibilities:

- The study will explore how to best use the land to revitalize the area and accommodate all modes of transportation.



# Active Work Near the 16 Avenue N.W. Project Area





# What We Heard

## Overall Themes We Heard in Phase 1: Discover



### Social and Healthy Lifestyle

- 16 Avenue N.W. is not as good a place for gathering as nearby locations on Bowness Road N.W., or at Edworthy and Shouldice Parks.
- Improve the experience of 16 Avenue N.W. for people who walk, wheel and take transit by creating better connections to Bowness Road N.W. and the river valley.
- Increase trees and natural elements
- Create a better experience for people who walk, with places to rest as well as walk.



### Mobility and Functionality

- Maintain traffic flow
- Safer turning for vehicles
- Create better, wider sidewalks that are separated from the roadway
- Provide better, safer connections to the river pathway system
- Improve connections to hospital and pathways for people who walk and wheel
- Improve transit stops to prevent users getting splashed



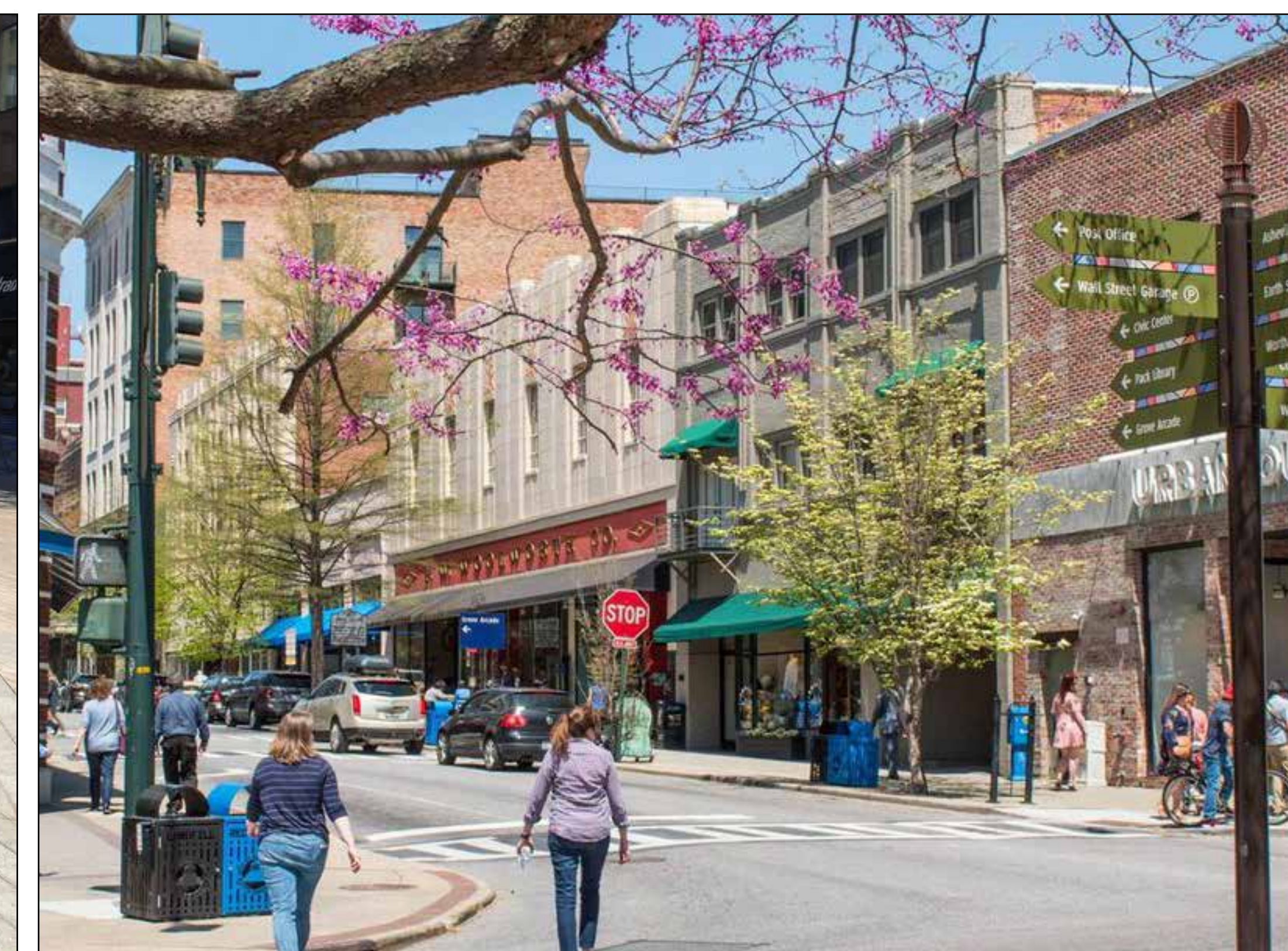
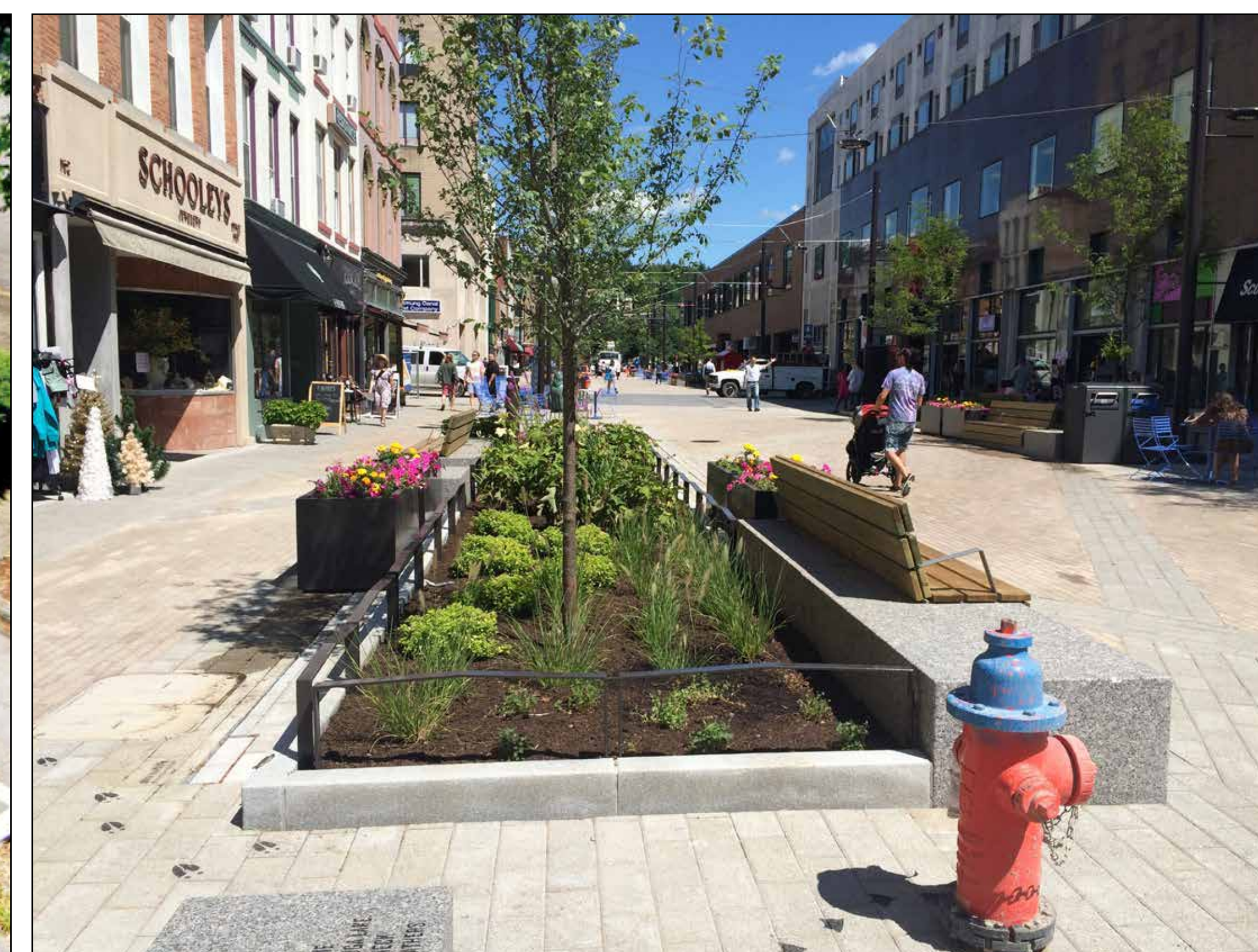
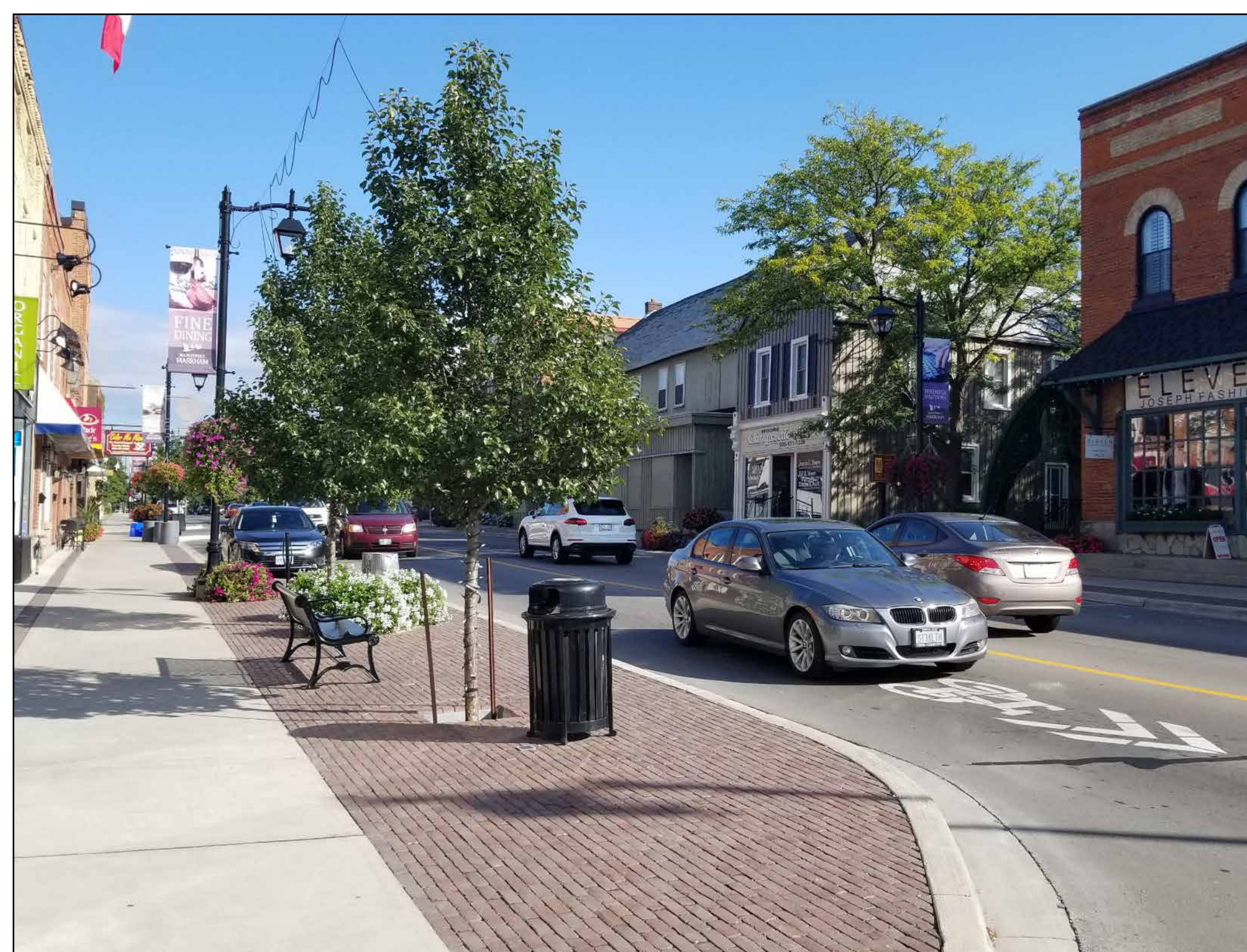
### Character and Identity

- Showcase the river valley and entry into the city
- Distinguish the community
- Create a unique memorable street
- Address how 16 Avenue N.W. divides Montgomery
- Improve lighting
- Provide family-friendly places to gather and rest



### Economic Vitality

- Diversify types of businesses
- Allow for patios and restaurants
- Traffic noise detracts from street environment
- Ensure easy access to business
- Don't detract from the focus on Bowness Road N.W.
- Explore underground parking, avoid large surface lots
- Support variety in the street front character



Images shown here were selected most often by Discover Phase participants to best reflect the principle and goals of their respective categories.



# Project Principles and Goals

Using what we heard from Calgarians in Phase 1: Discover and feedback from internal technical reviews, the project team has revised the draft project principles and goals presented in Phase 1: Discover.



Social and Healthy Lifestyle	Mobility and Functionality	Character and Identity	Economic Vitality
Principles			
<i>Positively impact the social environment by enhancing connections that encourage healthy lifestyles, support biodiversity, and provide access to parks and pathways.</i>	<i>Improve 16 Avenue N.W. for those who walk, wheel, drive, and take transit to safely connect people to community and city-wide destinations.</i>	<i>Establish a sense of place and offer memorable experiences for both residences and visitors.</i>	<i>Boost economic vitality by encouraging redevelopment opportunities, promoting investment and bringing more people to destinations along 16 Avenue.</i>
Goals			
<ol style="list-style-type: none"> <li>1. Improve the comfort of public spaces by enhancing the tree canopy.</li> <li>2. Maintain the health and resilience of parks and green spaces with plants that reflect the natural landscape.</li> <li>3. Design public spaces that are vibrant, feel safe and encourage social connection.</li> </ol>	<ol style="list-style-type: none"> <li>4. Improve walking and wheeling connections to key destinations along and across 16 Avenue.</li> <li>5. Improve comfort and access to transit stops or other high occupancy vehicles.</li> <li>6. Facilitate efficient movement of people and goods along and across 16 Avenue, and accommodate future growth and development.</li> <li>7. Design walking and wheeling facilities to be safe, comfortable and accessible.</li> </ol>	<ol style="list-style-type: none"> <li>8. Provide opportunities to showcase the diversity of communities, residents and businesses.</li> <li>9. Reflect the unique community identity of Montgomery in the Main Street design including fostering a sense of arrival, and encouraging people to stop, see and stay.</li> </ol>	<ol style="list-style-type: none"> <li>10. Create an adaptable public realm to improve street interface, stimulate investment and encourage business diversity.</li> <li>11. Provide parking opportunities that sustain access to businesses.</li> </ol>

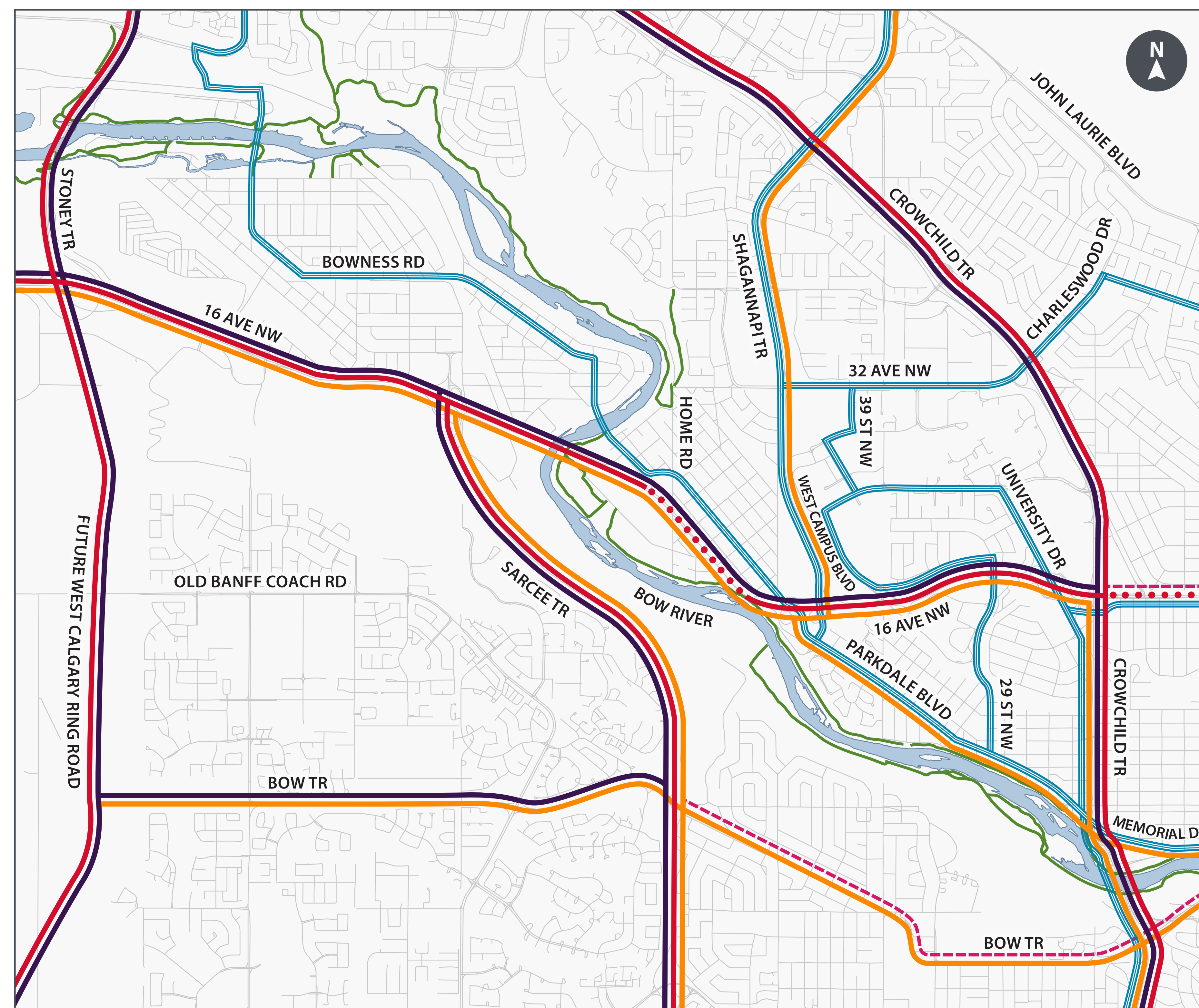


# The Role of 16 Avenue N.W.

**16 Avenue N.W. supports many functions in Calgary's transportation network playing a key role in:**

- Providing a major river crossing for travelers on other roadways in northwest Calgary that converge on 16 Avenue N.W. to cross the Bow River.
- Acting as a main goods movement corridor in the city.
- Connecting people who walk and wheel to the river pathways.
- Connecting people who use transit to The City's Bus Rapid Transit (BRT) Network east of West Campus Boulevard N.W.
- Supporting traffic volumes of about 40,000 vehicles per day. This is forecasted to increase to approximately 74,000 by 2048.

## Role in the Calgary Transportation Plan



### LEGEND

- |                                      |  |
|--------------------------------------|--|
| SKELETAL ROAD NETWORK                | PRIMARY TRANSIT NETWORK                                |
| URBAN BOULEVARD ALONG 16 AVENUE N.W. | REGIONAL MULTI-USE PATHWAY ROUTE (BOTH SIDES OF RIVER) |
| MAIN GOODS MOVEMENT CORRIDOR         | PRIMARY HOV NETWORK                                    |
| SUPPORTING GOODS MOVEMENT CORRIDOR   |  |

## Role in Supporting Calgary's Traffic



### LEGEND

- |                |                               |
|----------------|-------------------------------|
| 75000 - 100000 | MAJOR RIVER CROSSING          |
| 50000 - 75000  |                               |
| 25000 - 50000  | FUTURE WEST CALGARY RING ROAD |
| 15000 - 25000  |                               |



# Thank you for your time!

## Next Steps

Your input along with technical expertise will be used to guide the development of the recommended streetscape master plan and recommended transportation corridor short-, medium-, and long-term plans. A summary of all public input will be available early in 2021 at [calgary.ca/16avenuenw](https://calgary.ca/16avenuenw)

**Online engagement will be open:**

October 26, 2020 - November 22, 2020

**Stay engaged!**

Learn more and sign up for e-mail project updates at:

**[calgary.ca/16avenuenw](https://calgary.ca/16avenuenw)**