

**Calgary**



# Bend in the Bow.

## Welcome

Open House  
May 19, 2016  
4–8pm

Alexandra  
Centre

### Purpose

The purpose of tonight's open house is to find out about the design concept options—and give the project team your feedback.

### We're here to listen

The project team includes The City of Calgary staff and a consultant team—a multidisciplinary group of landscape architects, biologists, reclamation specialists, water resource engineers, environmental scientists, historians and artists.

**We're here to listen  
to you.**

Calgary is a city defined by its river parks.

Along those rivers, a network of green spaces provide citizens with parks and open areas to gather, connect with nature, and enjoy the outdoors. Our river network also provides important habitat, and movement corridors for wildlife.



# What is Bend in the Bow?

Bend in the Bow is a long-term project initiated by The City of Calgary that will connect Pearce Estate Park and the adjoining green spaces along the Bow River with the Inglewood Wildlands and the Inglewood Bird Sanctuary.

# What is a Design Development Plan (DDP)?

A Design Development Plan (DDP) combines concept design (the initial stage of the design process) with public engagement to create a road map that influences the rest of the design process.

Public feedback is important to ensuring that the resulting concept design reflects what matters to Calgarians.

# Where are we in the process?

We are currently in Phase 2 of the Bend in the Bow DDP. This phase focuses on Pearce Estate Park and the adjoining green spaces along the Bow River towards the Inglewood Bird Sanctuary.

Visit [calgary.ca/bendinthebow](http://calgary.ca/bendinthebow) for more information on the project to date.



## DDP Considerations + Constraints

Here are some constraints and considerations to keep in mind:

- » **A Design Development Plan is a high level design plan.** Ideas that are too broad or too specific will not be included in the DDP. These ideas are recorded in the What We Heard reports for future consideration.
- » **Part of the project area is located within the floodplain.** Location of new structures and amenities need to be carefully considered with land management strategies.
- » **Bow Habitat Station (1) is provincially-owned and operated.** Bow Habitat Station (BHS) leases land from The City of Calgary. This project must accommodate existing and planned uses for BHS.
- » **Harvie Passage (2) is provincial infrastructure.** Reconstruction of

- Harvie Passage is being delivered under the Disaster Recovery Program by Alberta Transportation. The design of the play waves, hydraulics and bank protection are outside the scope of Bend in the Bow.
- » **Bow River bioengineering sites (3) will continue to be used for public and professional demonstrations.** The Province and The City are collaborating to improve riverbank stability and flood resilience within the project site through bioengineering.
  - » **The project will not negatively impact current ecological function and educational programming of the park.** Some areas of the park are well used by wildlife and educational programs. Proposed functions will be of minimal disturbance to sensitive areas.





# What is your role?

## Your feedback today will help evolve the proposed concept.

Our engagement process includes feedback from internal stakeholders, external stakeholders, landowners, and the general public. Your feedback is important.

Review the proposed concept then tell us what you like, what you think doesn't work and explain why. Your ideas are important in helping the project team refine the design.

We've provided questions for feedback on the boards. Use the post-it notes and stickers to provide your feedback.



# We want to hear from you!

# How can you stay involved?

### Tonight

Use the sticky notes to give us feedback on proposed concept or specific ideas.

Have questions? Talk to us!


### Online


Need more time? Want to share Bend in the Bow with others?


Go to [calgary.ca/bendinthebow](https://calgary.ca/bendinthebow)


A copy of tonight's open house boards will be available at the link above. We will also provide Calgarians an opportunity to give us their feedback online.

### Stay Informed

 [calgary.ca/bendinthebow](https://calgary.ca/bendinthebow)

 @CalgaryParks

 City of Calgary Parks

 or contact 311



# What is important about the site?

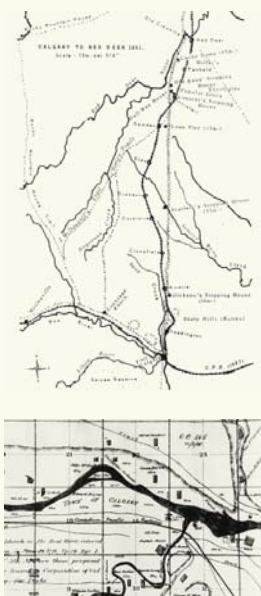
## This site is rich in cultural and natural history.

From early on, this site has played a significant role in Calgary.

William Pearce's efforts to beautify his estate set the groundwork for future river parks. He was involved in preserving many of our most beloved parks and greenways.

Later, the construction of the weir allowed the establishment of irrigation in western Alberta. Today, Pearce Estate Park and the surrounding land is a multi-use recreational area, continues to provide key infrastructure, is a nature education hub, and provides habitat for fish and other wildlife.

### City + Region



**First Nations**  
Early maps of southern Alberta reveal trail networks that were commonly used by First Nations to reach river crossings, encampments, and significant places. Some of these trails laid the groundwork for routes that would become conduit for wagons, railway, and eventually roads. Many of our major roads today are named in honour of prominent First Nations leaders, regions, and communities.

### Trees



**City Beautiful Concepts**  
Calgary was once a treeless, wind-swept city due to its arid climate. The urban forest that we enjoy today is attributable to people like William Pearce who was dedicated to planning and protecting the urban forest. Pearce was heavily influenced by City Beautiful concepts, which highlighted civic beauty. The Mawson Plan shown above envisions Calgary as a beautiful Neo-classical city, very much like central Paris.



**Tree Farm on Pearce Estate**  
The image above shows the view of Pearce's estate where the influence of City Beautiful can be seen in the ornamental plantings separated by gravel pathways. This green landscape contrasts with the sparse treeless landscape in the background.

### Pearce Estate Park



**William Pearce (1848-1930)**  
Pearce was an advocate of City Beautiful urban design and landscaping concepts, including extensive tree planting, preservation of open space and parkland development. His concepts and ideas formed the basis for the subsequent development and evolution for the present day City of Calgary and its systems of regional parks.



**Bow Bend Shack (1889)**  
At his estate at the great bend in the Bow River, nicknamed Bow Bend Shack, William Pearce established at a micro scale a prototype for region-wide development of land conservation initiatives, irrigation, experimental farming techniques, protection of natural features including riparian habitats, and the propagation of trees, shrubs, flowers, grains, and vegetables. The image of Pearce's estate above reveals a water-pump tower in the foreground and areas for the demonstration farm in the background.

### Water

**Western Irrigation District**  
The Western Irrigation District Canal was the precursor to the full development of the Western Irrigation District. The water of the WID continues to provide irrigation water to over 96,000 acres of land and supplies municipal water to over 12,000 people today.



**Bow River Weir (1904)**  
The original structure of the Western Irrigation District Weir, also known as the Bow River Weir, was constructed in 1904 and rebuilt in 1975. Although instrumental in making Alberta more arable, ongoing safety concerns surrounded the weir since inception. Recent improvements have been made to enhance the safety and fish passage along the river. The City of Calgary and The Province continue to collaborate with the Harvie Passage Calgary Bow River Weir Project.

### Industry



**Surveyors (1911-1912)**  
The above image shows the Grand Trunk Pacific Railway surveyors who helped locate the line of the railway. William Pearce was among the first Dominion Land Surveyors and later the Chief Inspector of Surveys, who became known as the "Czar of the West". His relentless promotion of the development of irrigation for farming in southern Alberta.



**Grand Trunk Pacific Railway (1914)**  
The Grand Trunk Pacific Railway ran from Winnipeg to British Columbia, a National Transcontinental Railway that would unify the newly founded nation. In 1905, the year that the provinces of Alberta and Saskatchewan were established, construction of the railway began on the Canadian Prairies.

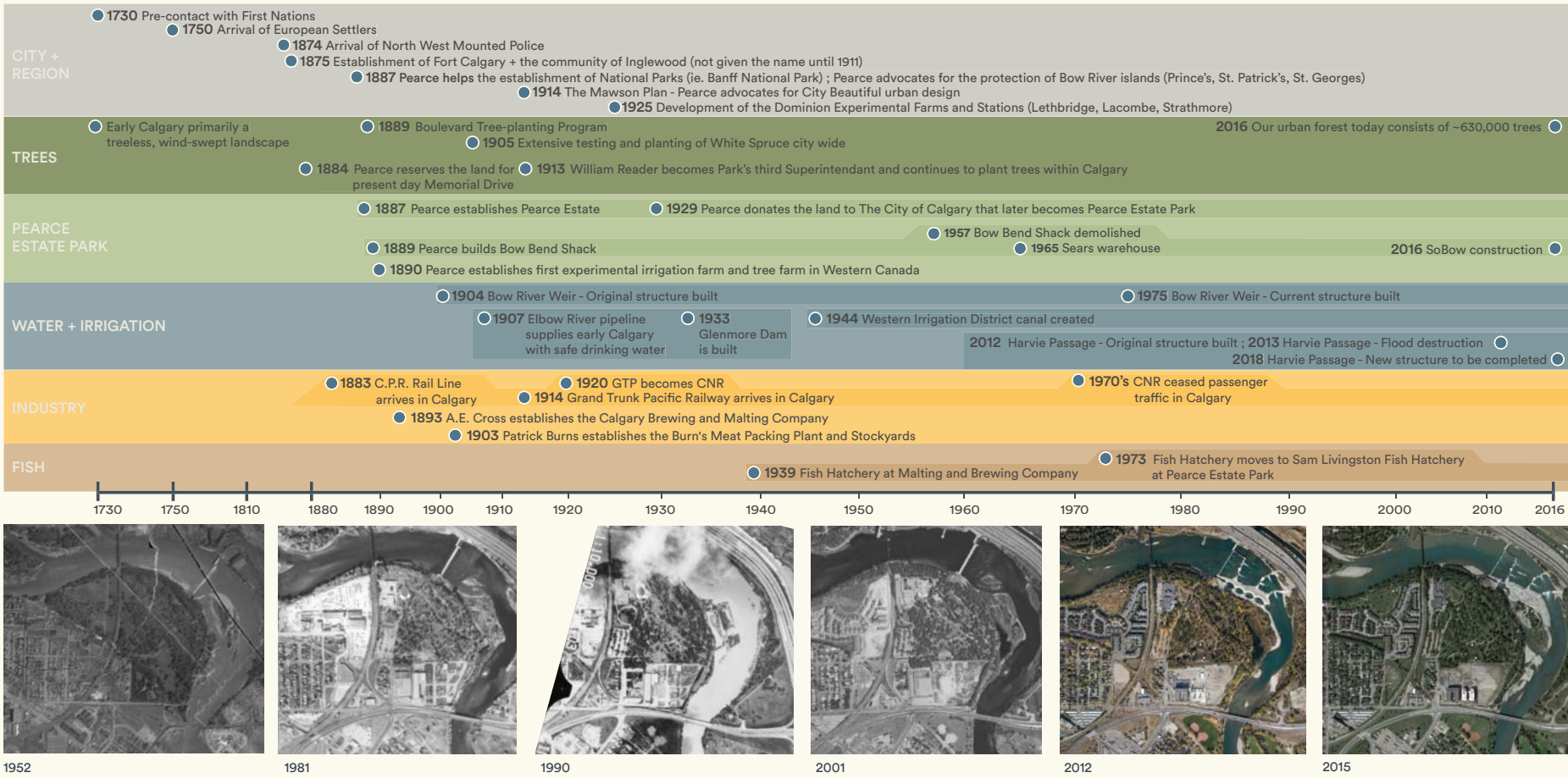
### Fish



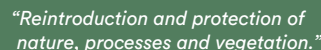
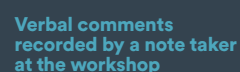
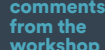
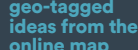
**Calgary Brewing and Malting Co. (1893)**  
To continue the legacy of community service by Alfred Ernest Cross, his son J.B. Cross established the Brewery garden which included a diverse range of flora and fish hatcheries.



**Sam Livingston Fish Hatchery**  
The fish hatchery moves to Pearce Estate Park in 1973 and becomes a crucial part in offering a unique setting to learn about Alberta's natural environment, including fish, water, wildlife and aquatic habitats.



During the Vision and Programming engagement, we asked what was most important, and what people wanted. We had **350 responses**, representing a balance of perspectives. Here is a summary of what we heard.



## Your ideas for Partnerships

- ☒ Bow Habitat Station
- ☒ City of Calgary (other Business Units)
- ☒ Inglewood Bird Sanctuary
- ☒ Province (Harvie Passage + amenities)
- ☒ Education groups + summer camps
- ☒ Fish hatchery
- ☒ Whitewater sport and other recreational experts
- ☐ Research programs

To read the full  
What We Heard report  
visit [calgary.ca/bendinthebow](https://calgary.ca/bendinthebow)



# Vision

Bend in the Bow is a collection of parks that tells stories.

These stories speak to Calgarians about our city’s beginning, our impact on the land, and how our culture was shaped by our environment. These parks will show how we are ultimately responsible for the health of our environment.

Bend in the Bow will tell the stories of how this site has evolved over the past century, and the role of conservation in managing our natural and cultural history for future generations.

# Core Values

Core values act as guiding principles for the project, and help us make future design and management decisions.

Through the process of engagement, we have identified three core values: nature, culture and education. Our goal is to balance these values.

## Nature

We will conserve and enhance the environmental value of Bend in the Bow for future generations.

## Culture

We will conserve and celebrate the site’s cultural significance, and recognize the role it has played in our city and our province.

## Education

We will inform the public about the intrinsic value of these places, and advocate stewardship of our city’s natural and cultural heritage.





## Natural Area

- » Allow passive uses that are compatible with a natural area

- » Maintain, restore and enhance terrestrial, aquatic and riparian habitats
- » Increase biodiversity
- » Improve wildlife mobility
- » Improved resilience to change (climate, flooding, etc.)
- » Plan trails to minimize braiding

- » Illustrate historic uses of the land by First Nations + early settlers
- » Celebrate Pearce's contributions to conserving Calgary's river parks

- » Maintain education trails
- » Improved interpretive signage
- » Foster appreciation for nature and our role as stewards of the environment

- » Allow active and passive uses that are compatible
- » Incorporate the regional pathway
- » Improve connections to the community

- » Enhance wildlife movement
- » Maintain and enhance tree canopy
- » Connect people with the water, but protect the shoreline

- » Incorporate a theme that discusses the importance of trails and mobility to First Nations, as well as early settlers.
- » Retrace the historic alignment of the Grand Trunk Pacific Railway

- » Improved wayfinding
- » Create gateways at major entrances
- » Foster appreciation for nature + culture
- » Use signage to communicate pathway rules

- » Allow active and passive uses that are compatible
- » Enhance amenities
- » Improve universal accessibility

- » Maintain and enhance tree canopy
- » Environmentally friendly landscaping

- » Celebrate Pearce's vision for the City Beautiful movement
- » Celebrate Pearce's accomplishments in experimental farming, irrigation, tree cultivation and other significant achievements

- » Foster learning through play
- » Improved wayfinding
- » Use signage to communicate park rules
- » Foster appreciation for sharing space

- » Allow active uses, and enhance amenities to support active uses
- » Where compatible, combine multiple uses

- » Maintain and enhance tree canopy
- » Environmentally friendly landscaping

- » Tell the story of river use by First Nations
- » Share the story of the weir, and its significance to Alberta
- » Promote history of water sport on the Bow River

- » Foster learning through doing
- » Use signage to communicate rules, etiquette and life safety
- » Foster appreciation for sharing space






Proposed Concept:

North

Within the zones of use we've proposed, we've identified numerous features to redevelop or improve upon at Pearce Estate Park.



What do you think of the proposed features? Place dots next to the features you prefer, use a post-it to share your thoughts.



Are there any features you would change? Why



Have an idea that's not in scope? Put it in the idea jar.






# Proposed Concept: South

Within the zones of use we've proposed, we've identified numerous features for the adjoining green and open spaces along the Bow River towards the Inglewood Bird Sanctuary.



What do you think of the proposed features? Place dots next to the features you prefer, use a post-it to share your thoughts. 

Are there any features you would change? Why 

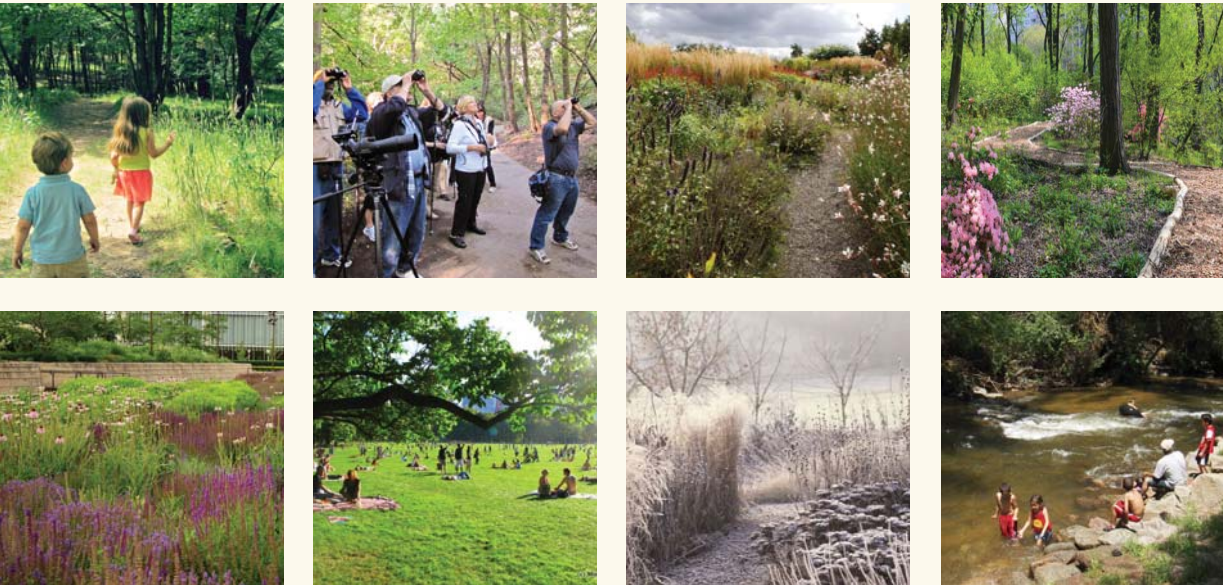
Have an idea that's not in scope? Put it in the idea jar. 



# Design Inspiration

These images represent some of the programs and activities that relate to our core values of nature, culture and education. These images are examples only to spark discussion about the design elements of the park spaces. The actual design of the programs and activities may look different than what is shown here.

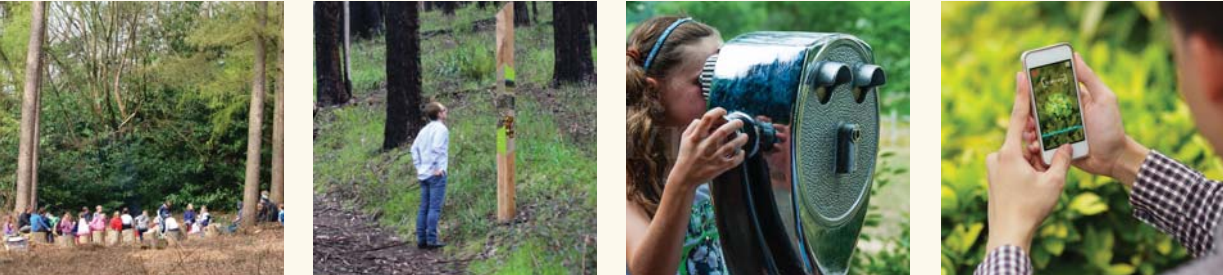
## Nature



## Culture



## Education



Place a dot on the types of design elements you like!

Have an idea for design inspiration? Want to comment on the images shown? Use a post-it to share your thoughts.





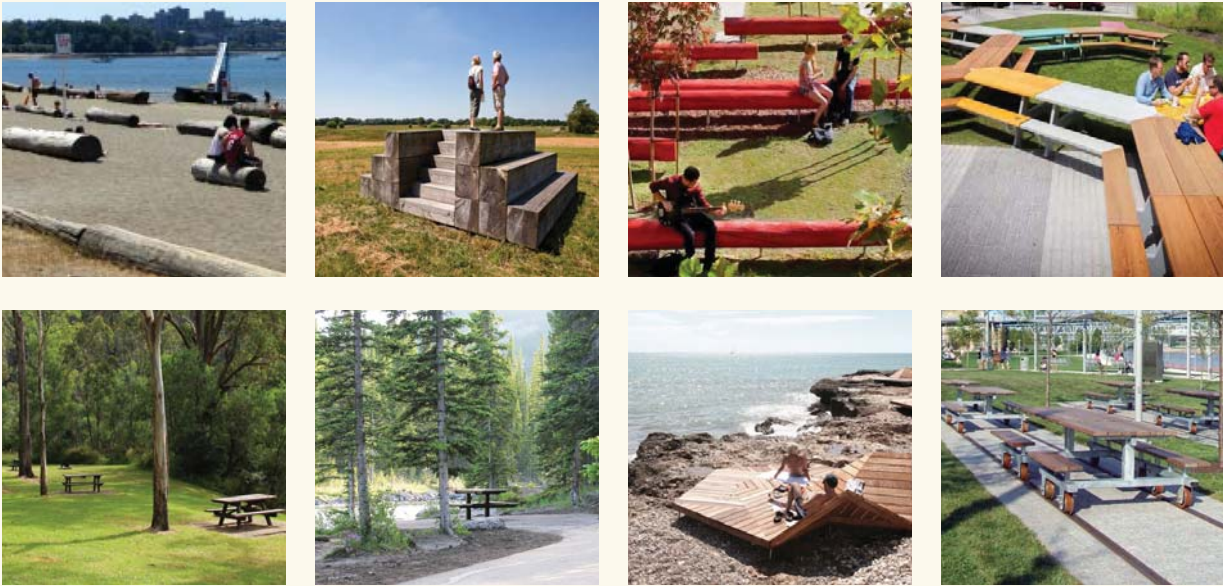
# Design Inspiration

These images represent some of the potential improvements that relate to the proposed features. These images are examples only to spark discussion about the design elements of the park spaces. The actual design of the programs and activities may look different than what is shown here.

## Play



## Site Furnishings



## Structure / Amenities



Place a dot on the types of design elements you like!



Have an idea for design inspiration? Want to comment on the images shown? Use a post-it to share your thoughts.

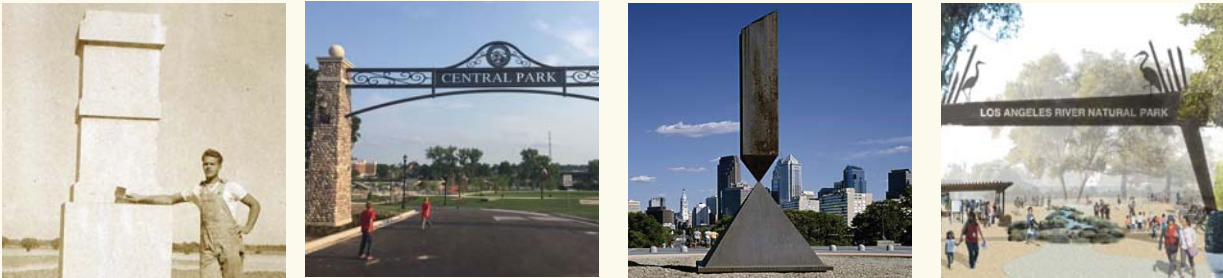




# Design Inspiration

These images represent some of the potential improvements that relate to the proposed features. These images are examples only to spark discussion about the design elements of the park spaces. The actual design of the programs and activities may look different than what is shown here.

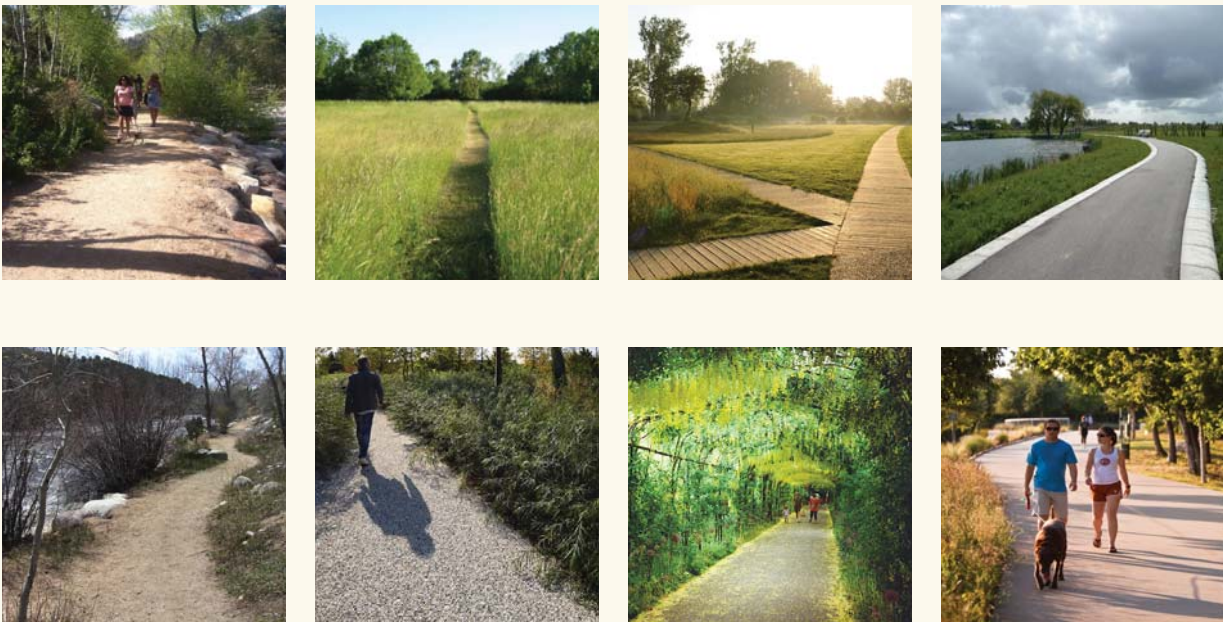
## Gateways + Entrances



## Wayfinding + Markers



## Pathways + Trails




Place a dot on the types of design elements you like!

Have an idea for design inspiration? Want to comment on the images shown? Use a post-it to share your thoughts.





## How did we do?

What do you think are the best aspects of the plan? 

What ideas could enhance the design? 

What did we miss? 