

Option 1

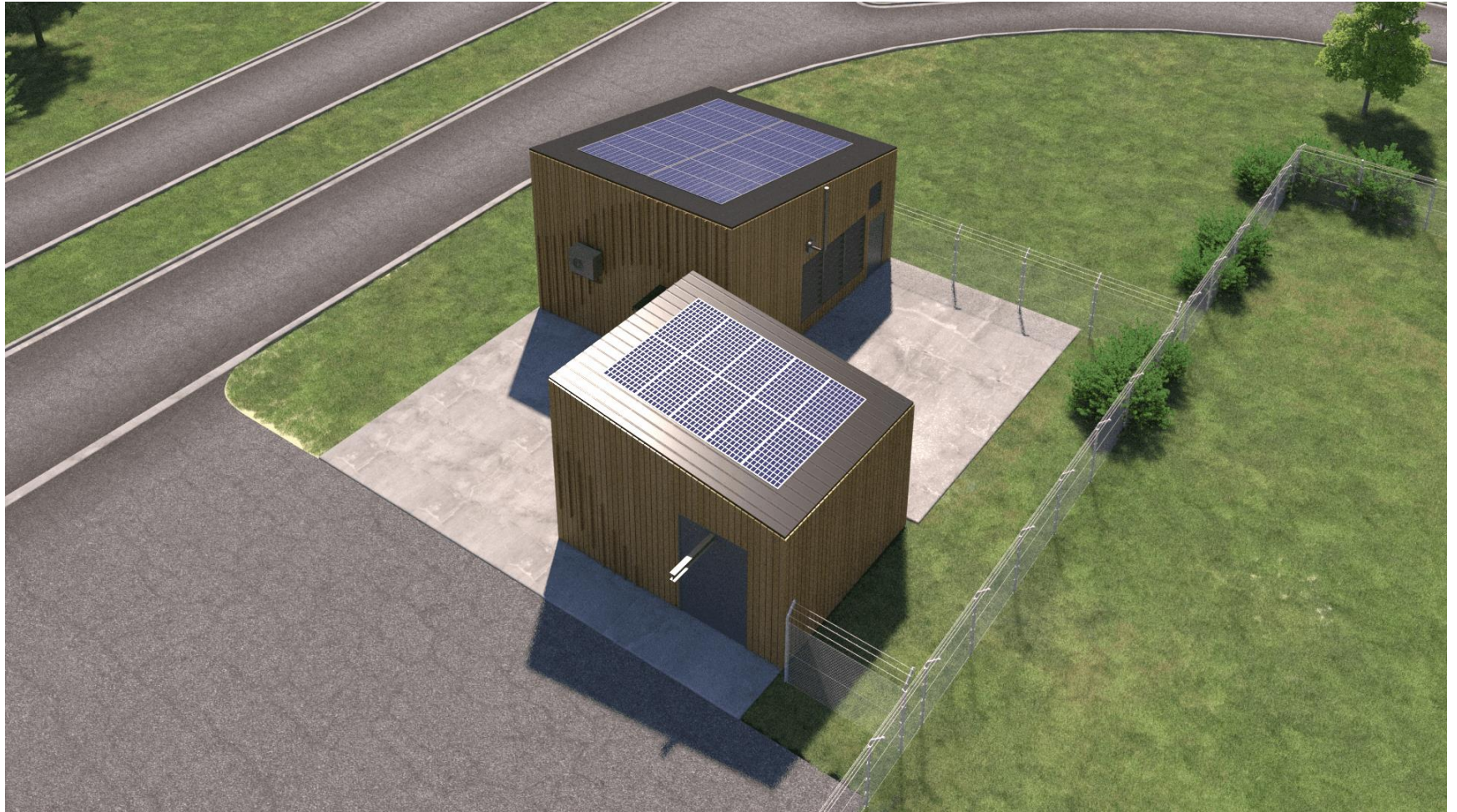
CONCEPT I

The proposed design provides a balance between an active graphic concept and functional form. This concept demonstrates the use of a thermal wood façade with louver panels transforming a seemingly simple geometry into an intriguing architectural element. The organic flow of the facade references not only the function of the lift station but also a playful representation depicting the flowing waters of the Glenmore Reservoir, Glenmore Sailing club, and the neighboring spray park. The naturally forested area is characterized by pushing various lengths of slats through the fence-like façade which allows the sun, as it progresses across the sky, to generate changing patterns that reflect the sites' relationship to the surrounding context.













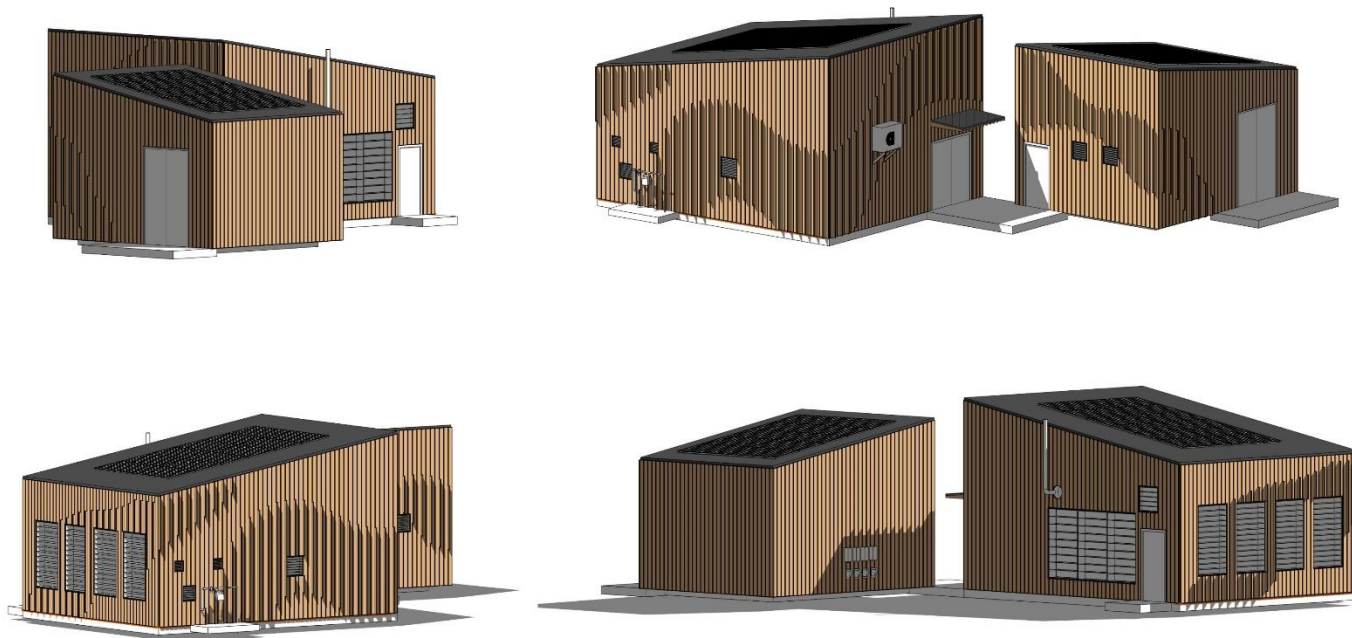
Palliser Sanitary Lift Station

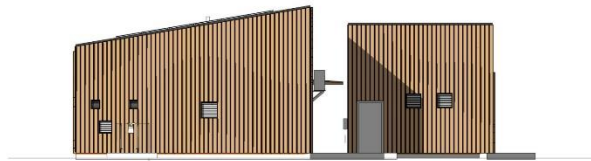


Palliser Sanitary Lift Station

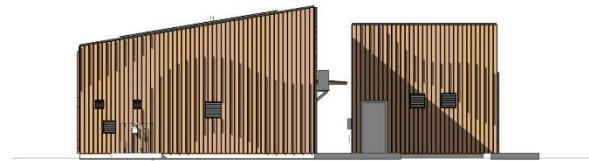


Palliser Sanitary Lift Station

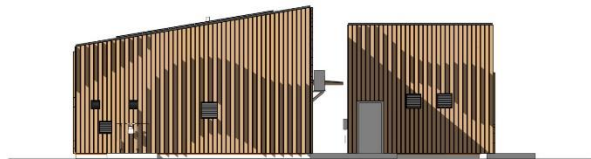




EAST ELEVATION - 9 AM



EAST ELEVATION - 10 AM



EAST ELEVATION - 11 AM

CONCEPT I - SHADOW STUDIES



EAST ELEVATION - 12 PM

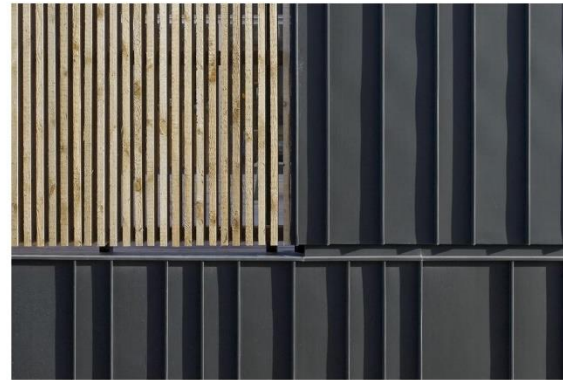


THERMALWOOD CANADA- SNAP-TO-IT SIDING
CONCEPT I - MATERIAL





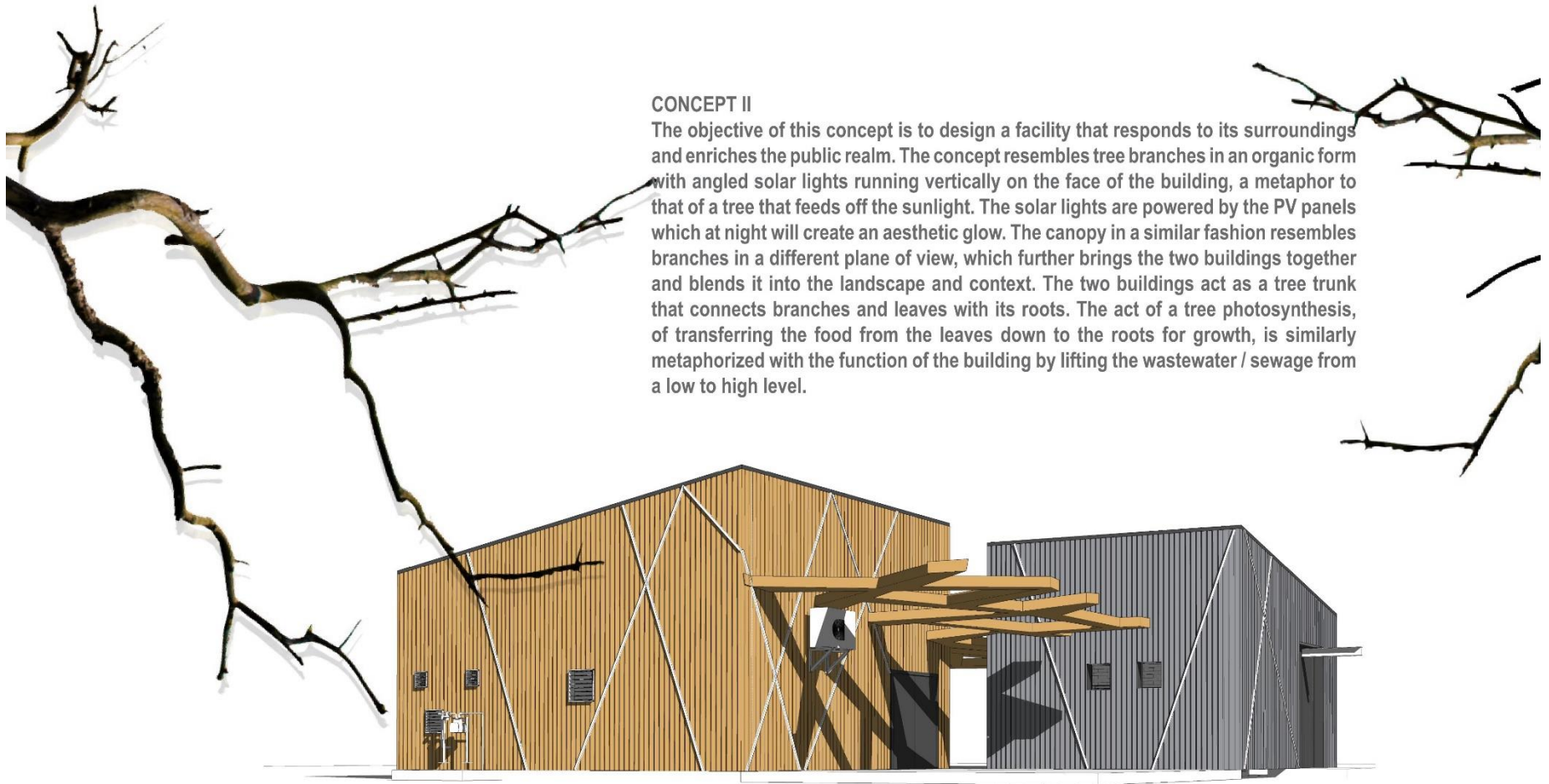
VMZ ZINC STANDING SEAM JOINT FACADE
CONCEPT I - MATERIAL



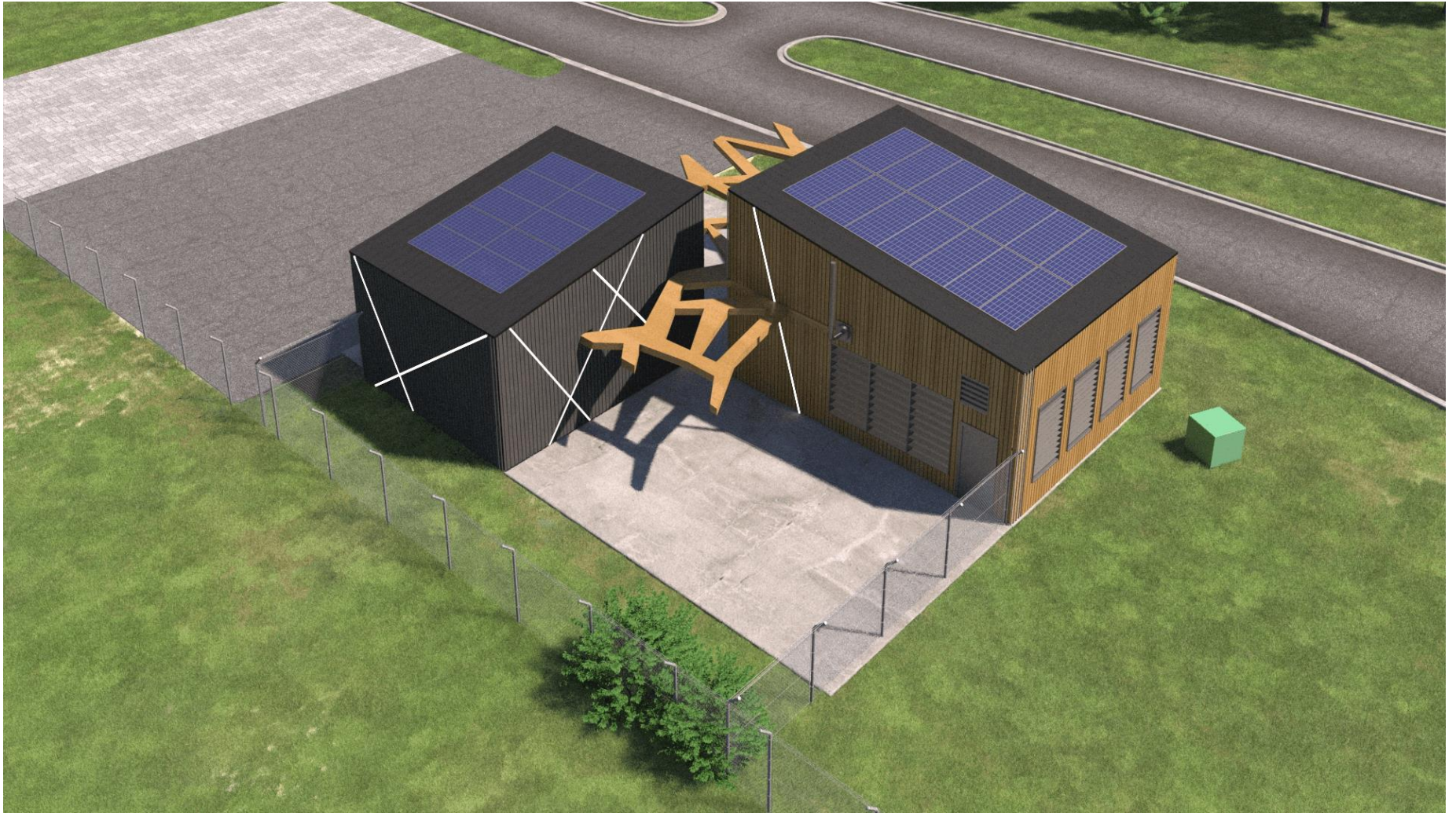
Option 2

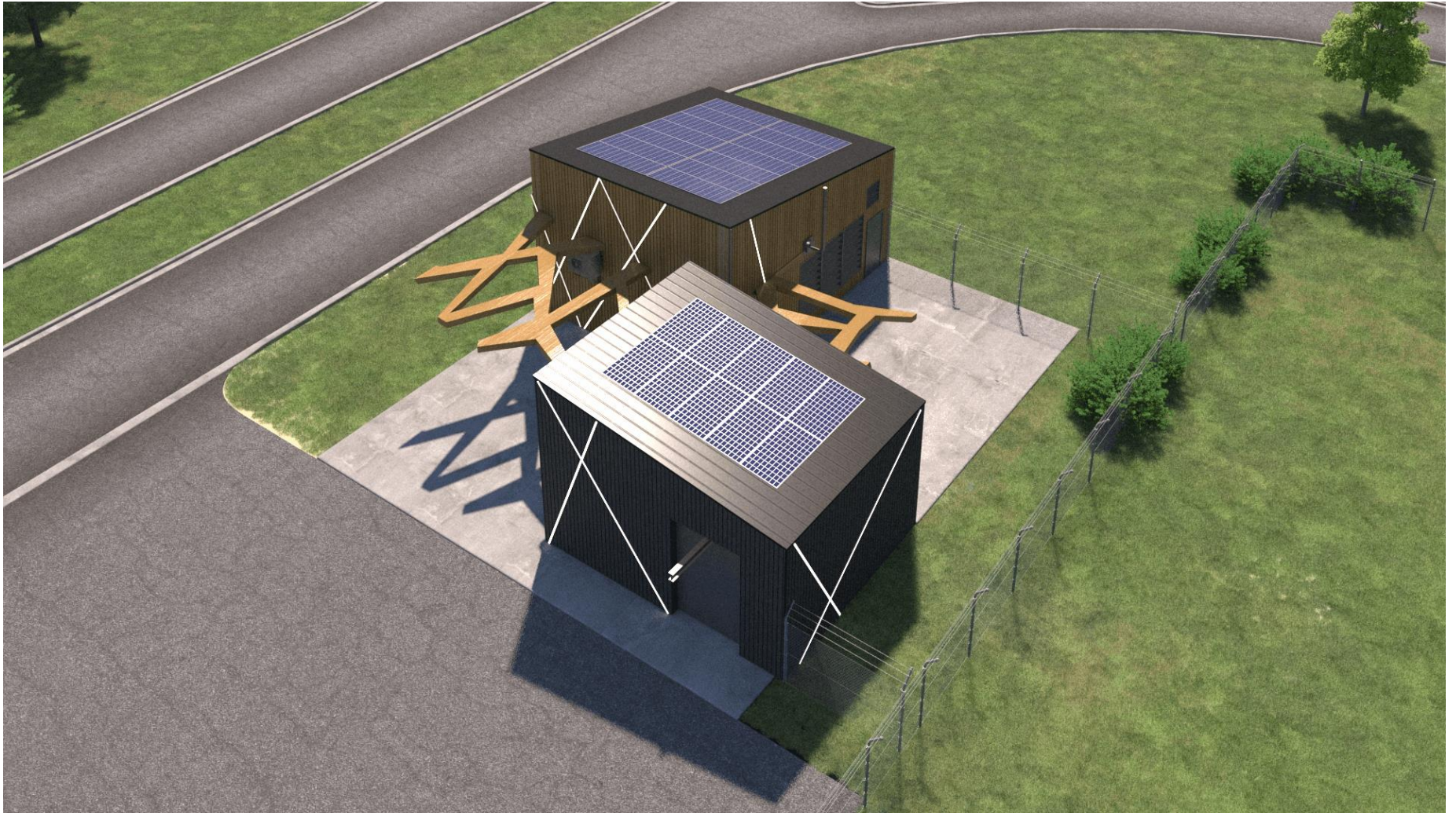
CONCEPT II

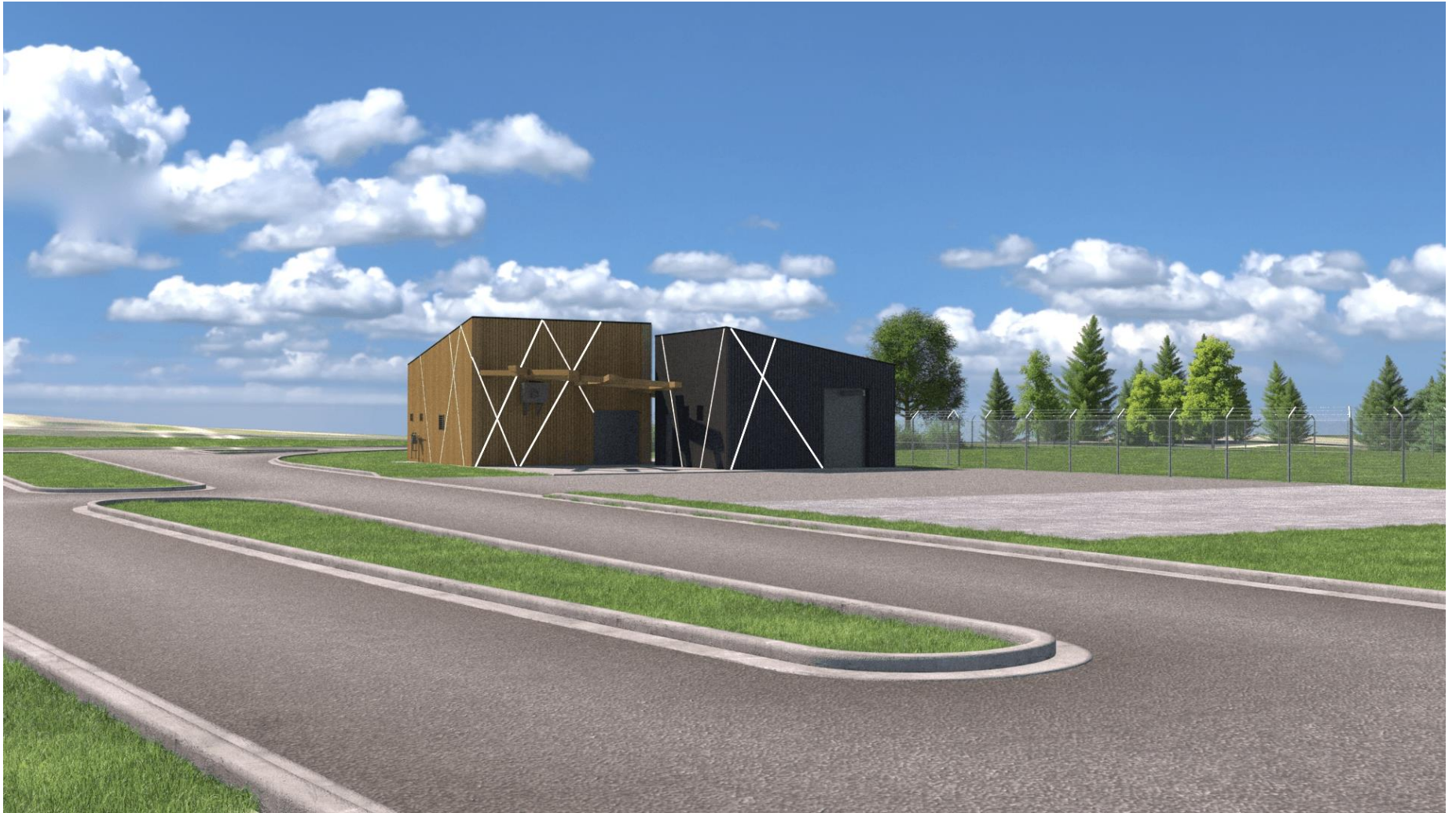
The objective of this concept is to design a facility that responds to its surroundings and enriches the public realm. The concept resembles tree branches in an organic form with angled solar lights running vertically on the face of the building, a metaphor to that of a tree that feeds off the sunlight. The solar lights are powered by the PV panels which at night will create an aesthetic glow. The canopy in a similar fashion resembles branches in a different plane of view, which further brings the two buildings together and blends it into the landscape and context. The two buildings act as a tree trunk that connects branches and leaves with its roots. The act of a tree photosynthesis, of transferring the food from the leaves down to the roots for growth, is similarly metaphorized with the function of the building by lifting the wastewater / sewage from a low to high level.









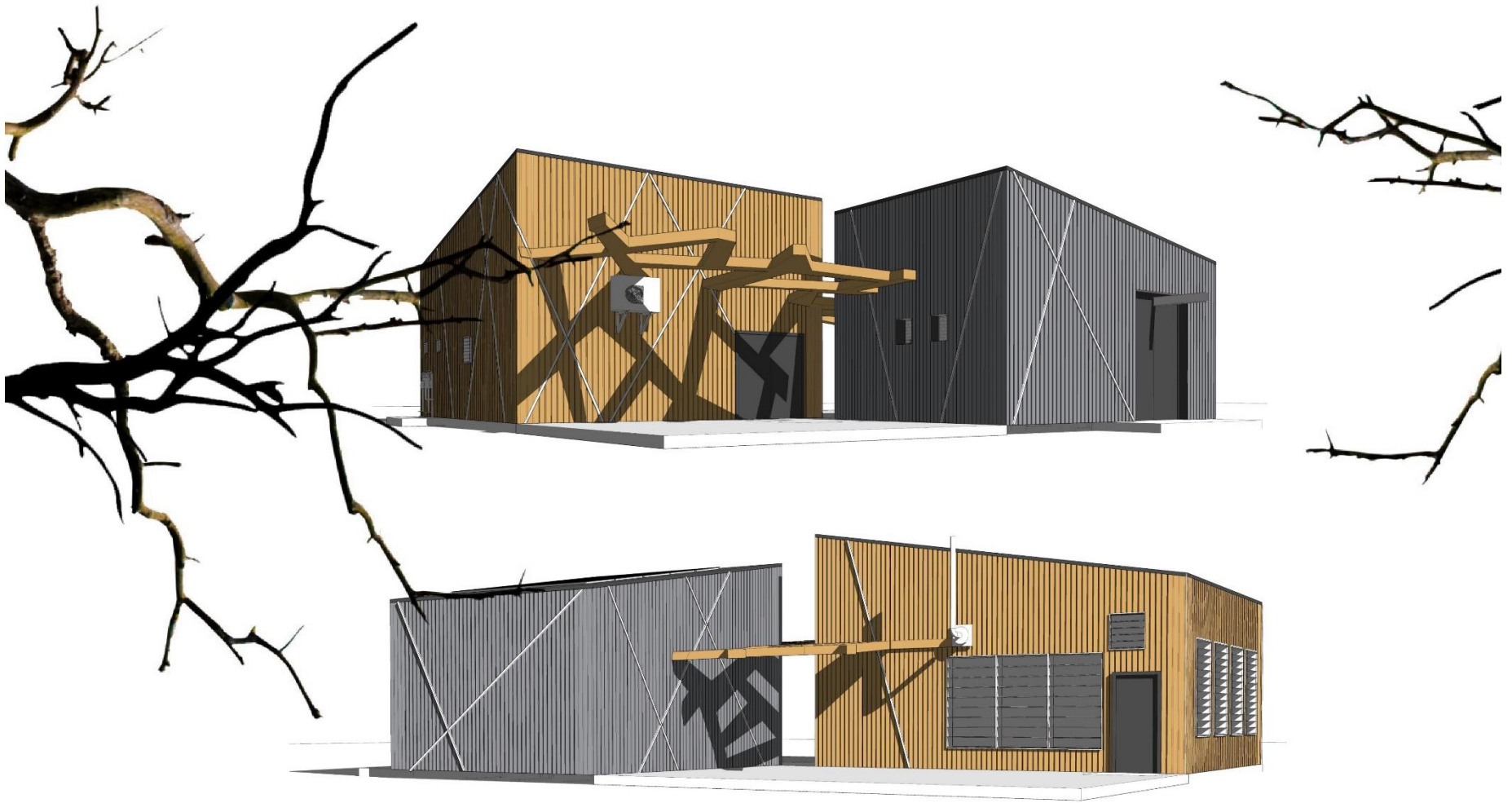




Palliser Sanitary Lift Station



Palliser Sanitary Lift Station



Palliser Sanitary Lift Station



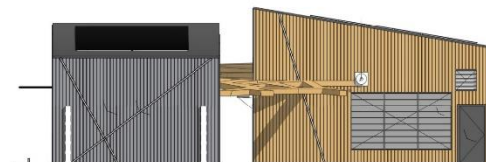
NORTH ELEVATION



EAST EVATION



SOUTH LEVATION



WEST EVATION

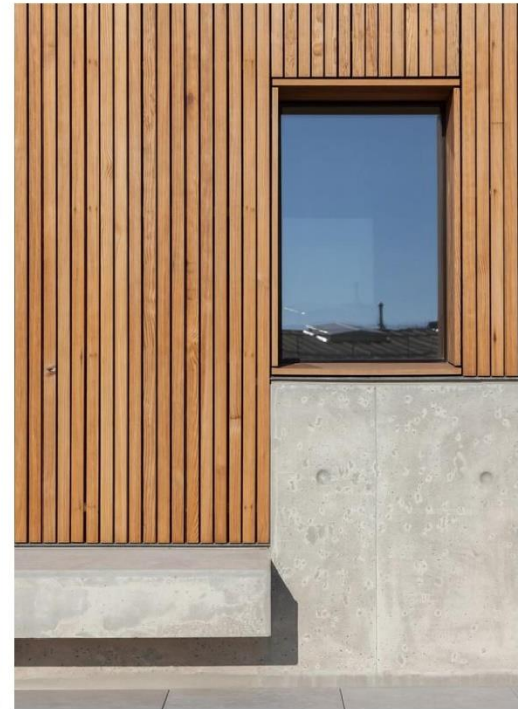


KALZIP - STANDING SEAM PROFILE CLADDING
CONCEPT II - MATERIAL





SPRUCE PINE FIR WOOD - MICRORIB PANELS
CONCEPT II - MATERIAL





SHOU SUGI BAN - BURNT TIMBER
CONCEPT II - MATERIAL