

Richmond Green

Public Engagement for Land Use Redesignation
and Open Space Planning at Richmond Green

May 4, 2021

Introductions

Ward 8

Evan Woolley

Ward 8 Councillor

City of Calgary

Garrett Wohlberg

Real Estate & Development Services

Michael Carnegie

Real Estate & Development Services

Tom Schlodder

Planning and Development

David Mahalek

Parks

Ron Buchan

Parks

Sarah Huber

Water Resources

Marcia Andreychuk

Engage

Ron Neff

Engage

O2 Planning + Design

Brian Horton

Principal, Urban Planning

Shawn Small

Senior Urban Planner

Nicholas Dykstra

Urban Designer

Grace Yang

Landscape Architect

Council Direction

On November 2, 2020, Council approved the following motion:

That Council receive for the Corporate Record the results of the assessment of market interest in a long-term contract to provide public golf service, and direct Administration to:

1. Direct Real Estate and Development Services (RE&DS) to prepare land use and subdivision applications for the ±5 acre parcel at 33 AVE SW and Sarcee Road SW and if planning approvals are granted, proceed to market the property consistent with The City's established sales process;
2. Direct RE&DS to bring back a real estate feasibility assessment that substantiates Corporate needs at the remaining land at Richmond Green, and the Richmond Green Operations Workplace Centers (OWC), to determine further disposition opportunities and report to Priorities and Finance Committee (PFC) on or before Q4 2021;
3. Prepare and implement a plan to accommodate disc golf as an interim use at Richmond Green starting in 2021 and until such time that a future redevelopment plan has been completed and implemented;

Agenda

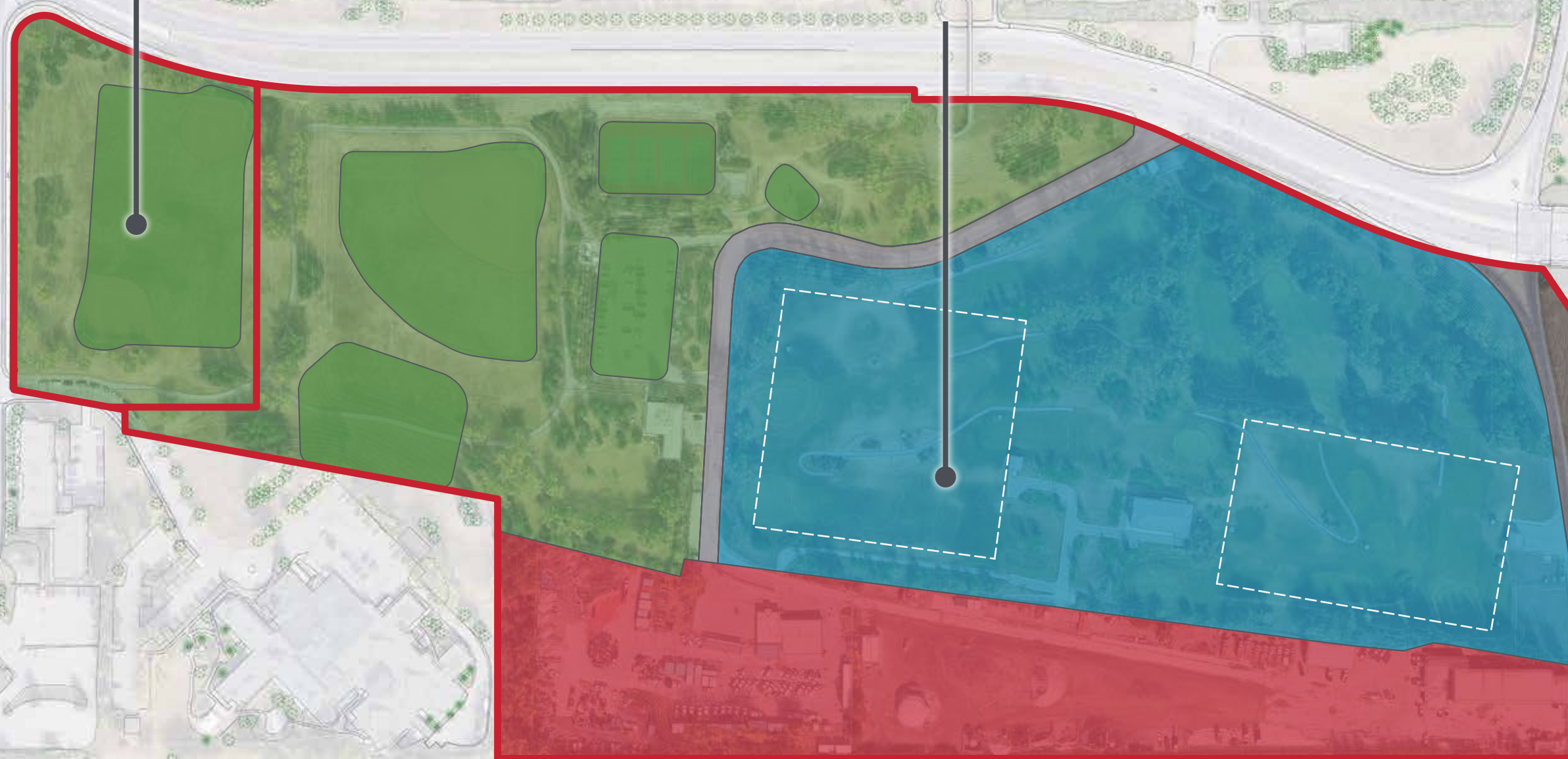
1. Overview of Proposed Changes
2. Scope 1: Land Use Application
3. Scope 2: Richmond Green Needs Assessment
4. Facilitated Q & A (Scopes 1 & 2) / Introduction to On-line Activity
5. Wrap Up

Scope 1

Land Use Application

Scope 2

Richmond Green Needs Assessment



Existing Open Space

Public Open Space
20.8 acres

Closed Golf Course
17.45 acres

OWC Yard
9.96 acres

LEGEND

- Public Open Space
- Closed Golf Course / Underground Water Infrastructure
- Operations Yards
- Roadway / Road Maintenance

0 10 30 50 100m 1:2500



All numbers exclude amount for existing and planned roadways.

Interim Open Space

Public Open Space
36.77 acres



LEGEND

- Public Open Space
- Development Parcel
- Future Roadway
- Interim Public Use
- Future Public Open Space

0 10 30 50 100m 1:2500

New Road connecting Currie with 33rd Ave (Alignment TBD) & Bus Rapid Transit (BRT)

- Phasing and expansion is TBD
- Environmental concerns are being explored for future open space programming

All numbers exclude amount for existing and planned roadways.

Future Open Space

Public Open Space
42.73 acres



LEGEND

- Public Open Space
- Development Parcel
- Future Roadway

0 10 30 50 100m 1:2500

All numbers exclude amount for existing and planned roadways.

Open Space

Existing



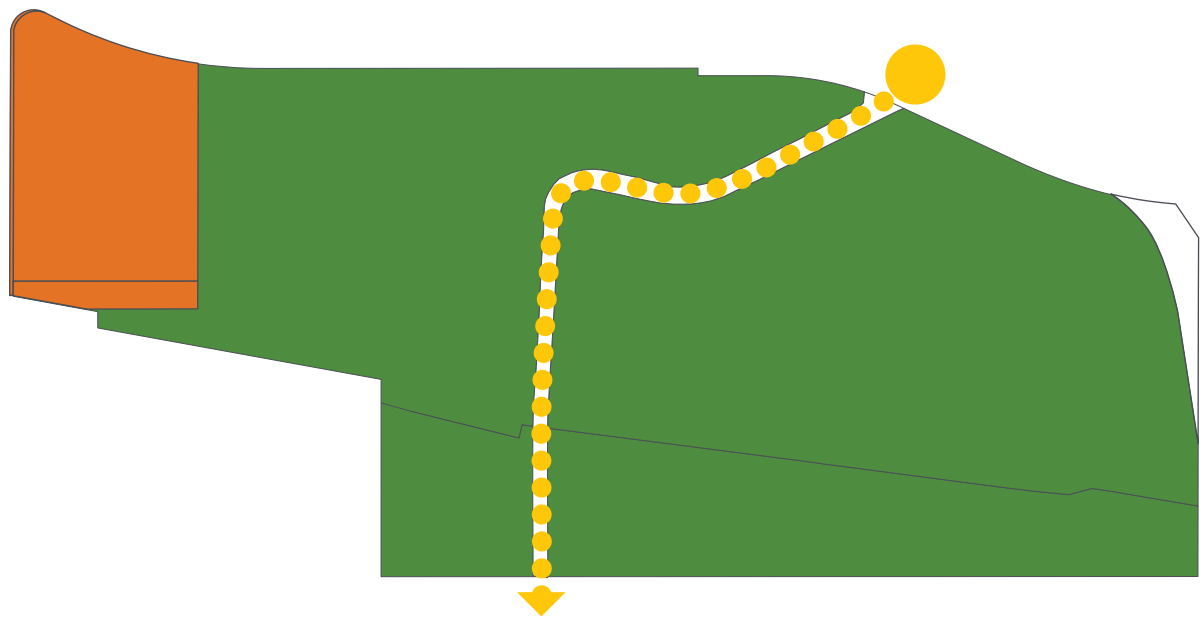
Total Open Space

38.25 acres

Total OWC Yard

9.96 acres

Future



Total Open Space

42.73 acres

Total Development Application

5.45 acres

+ 4.48 acres !

Scope 1: Land Use Application

Sarcee Rd

32 Ave SW

33 Ave SW

Land Use
Application Area

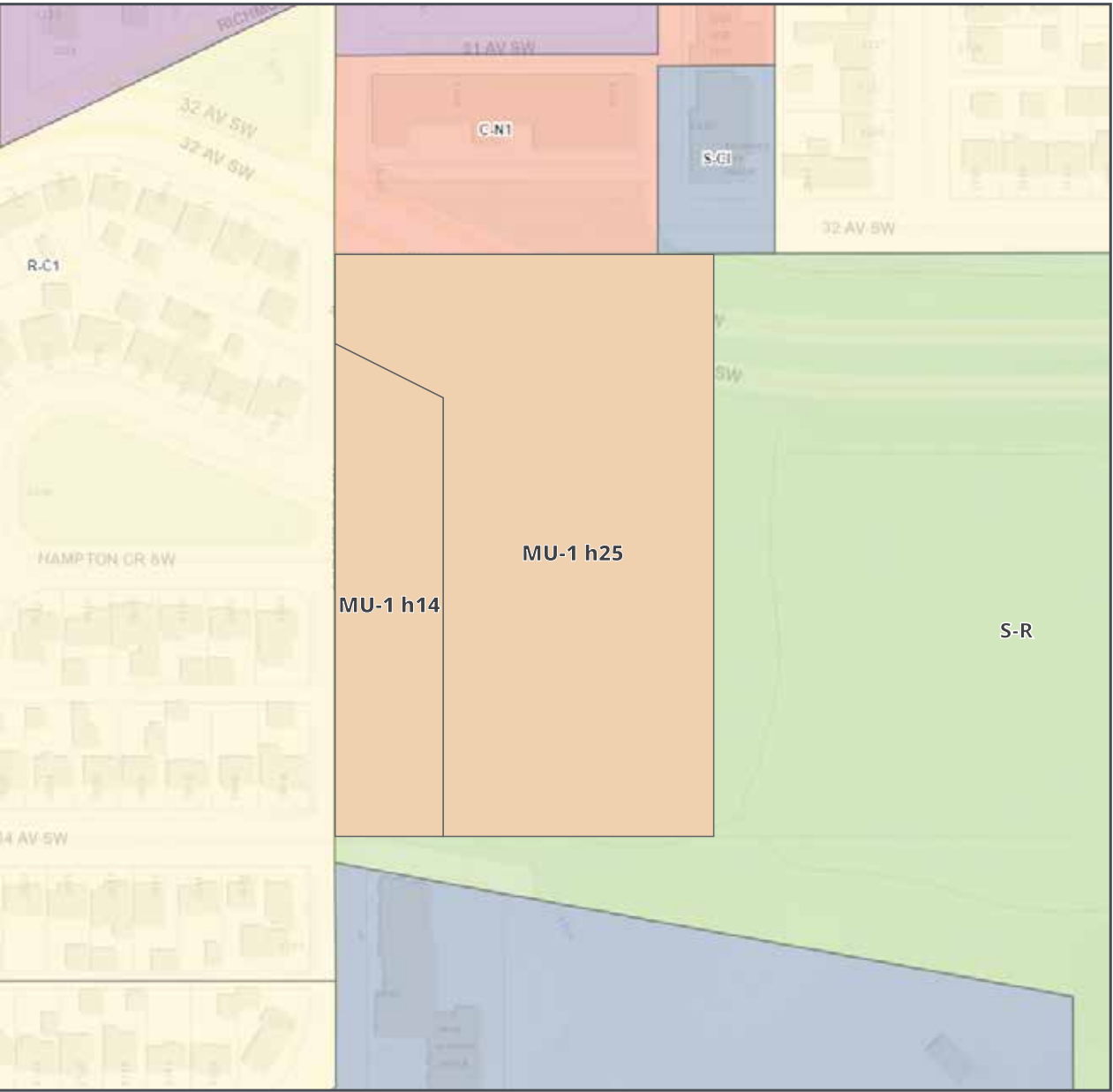
LEGEND

- Public Open Space
- Development Parcel

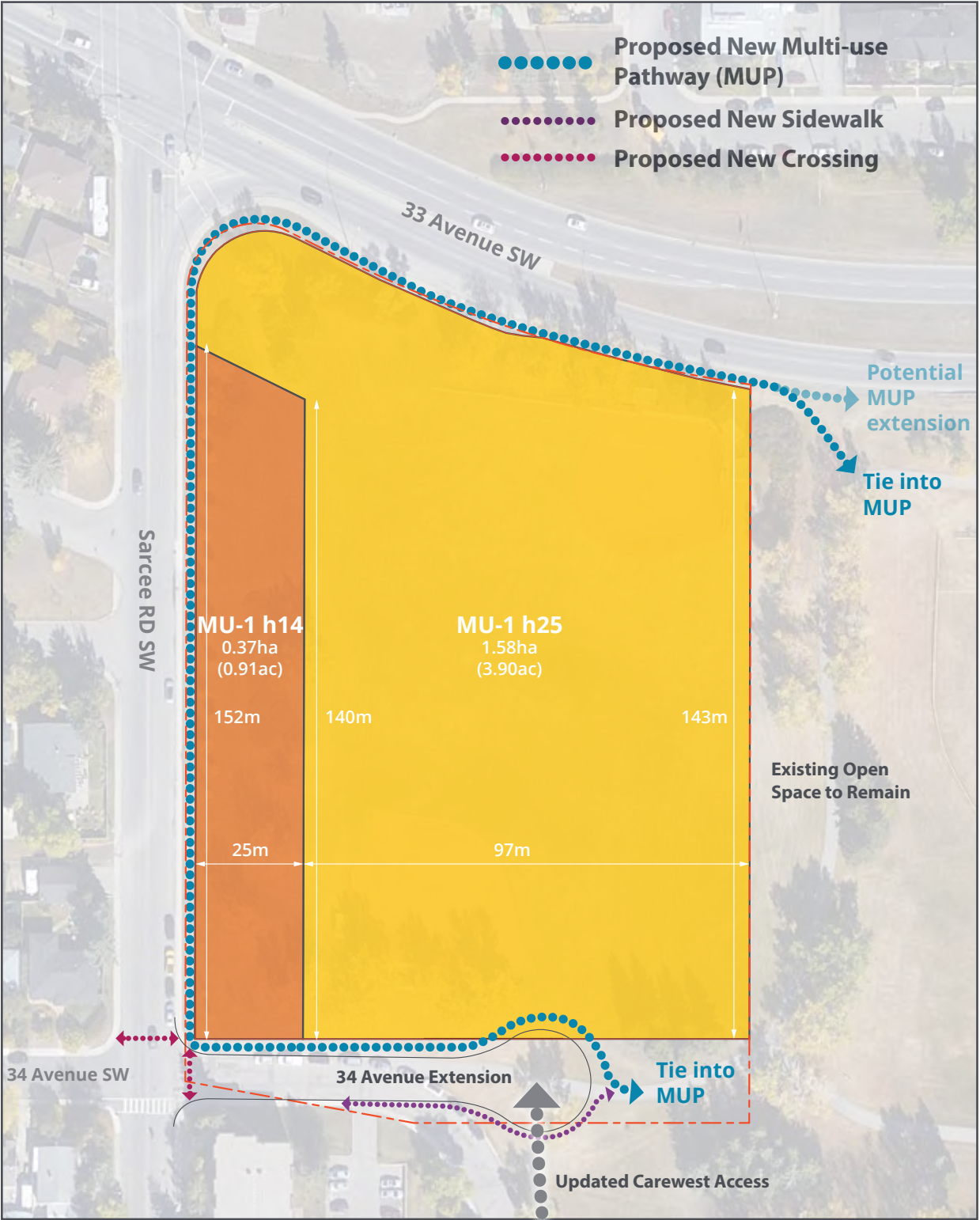
0 10 30 50 100m 1:2500

Land Use Application & Outline Plan

Policy Amendment



Proposed Land Use

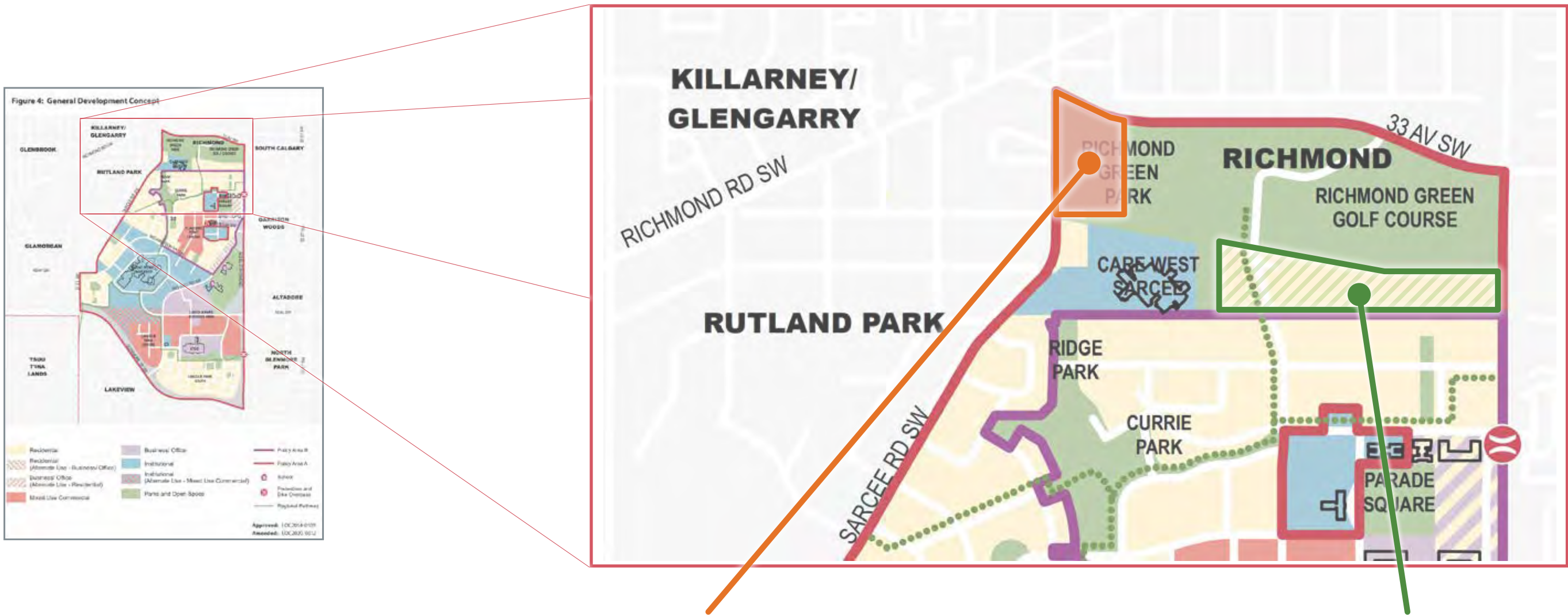


Proposed Parcelling

Land Use Application & Outline Plan

Policy Amendment

Amend CFB Master Plan:



Change the designation of the **5.45 acre** NW area **from Parks and Open Space to Residential.**

Change the designation of the **9.96 acre** OWC area **from Residential to Parks and Open Space.**

Land Use Application

Development Concept



Development Concept



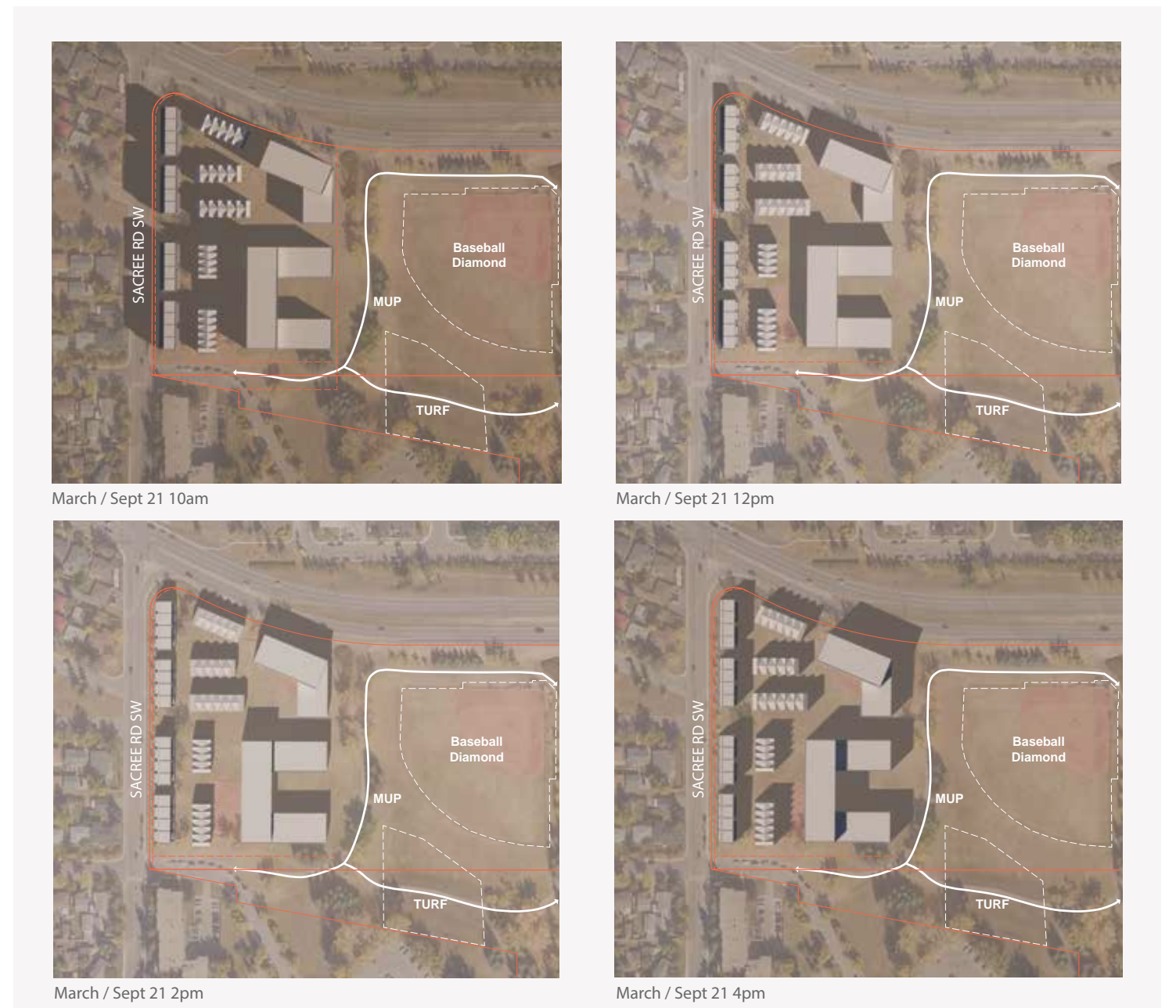
Alternative Concepts that also align with the proposed Land Use Application

Land Use Application

Development Concept



Development Concept



Shadow Study

Building Types

Examples



Building Types

Examples



Land Use Application

Development Planning Process / Timeline



Scope 2: Richmond Green Needs Assessment

A Re-invigorated park in the inner-city



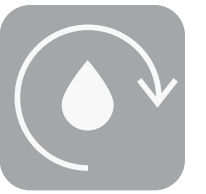
Adding public accessibility to the closed golf course and transforming the OWC will allow for new sport and open space programming at Richmond Green. This open space is comparable in size to other many other large parks in Calgary.



Park Comparisons

Richmond Green vs. Dale Hodges Park

Combined Park & Infrastructure



Images not to same scale

Park Comparisons

Richmond Green vs. Glenmore Athletic Park

Combined Park & Infrastructure



Programming Potential



43 acres



EXISTING PARK AMENITIES

1. Baseball Diamonds

2. Tennis / Pickleball Courts

3. Parking Lots

4. Washroom

5. Tobogganing Hill

6. Tot lot / Small Playground

55 acres



EXISTING PARK AMENITIES

1. Soccer Fields

2. Softball Diamonds

3. Football Field

4. Flag Football Field

5. Baseball Diamond

6. Track & Velodrome

7. Shotput

8. Long-triple Jump

9. Javelin

10. High-jump

11. Hammer / Discus

12. Washroom Facilities

13. Parking

Images to scale

Park Comparisons

Richmond Green vs. Prairie Winds Park

Combined Park & Infrastructure



Programming Potential



43 acres



EXISTING PARK AMENITIES

1. Baseball Diamonds

2. Tennis / Pickleball Courts

3. Parking Lots

4. Washroom

5. Tobogganing Hill

6. Tot lot / Small Playground

40 acres



EXISTING PARK AMENITIES

1. Fitness Stations

2. Water Fountains

3. Washroom / Change room

4. Public Picnic Area

5. BBQ Area

6. Public Picnic Shelter

7. Picnic Shelter w/ Tandoori Oven

8. Bike Racks

9. Pathways

10. Spray Park & Wading Pool

11. Toboggan Hill

12. Public Art

13. Tennis Court / Winter Skating

14. Parking Lots

15. Playscape / Playground

16. Cricket Pitch

17. Basketball / Winter Skating

18. Park Centre

19. Benches

Images to scale

Park Comparisons

Richmond Green vs. New Brighton Athletic Park

43 acres



EXISTING PARK AMENITIES

1. Baseball Diamonds

2. Tennis / Pickleball Courts

3. Parking Lots

4. Washroom

5. Tobogganing Hill

6. Tot lot / Small Playground

36 acres



EXISTING PARK AMENITIES

1. Sports Field

2. Baseball Diamond

3. Skate Park

4. Activity Space

5. Washroom / Changerooms

6. Playground

7. Parking

8. Regional Pathway

Images to scale

Park Comparisons

Richmond Green vs. Prince's Island Park

43 acres



EXISTING PARK AMENITIES

1. Baseball Diamonds

2. Tennis / Pickleball Courts

3. Parking Lots

4. Washroom

5. Tobogganing Hill

6. Tot lot / Small Playground

49 acres



EXISTING PARK AMENITIES

1. Picnic Areas

2. Playground

3. Pathway & Hiking Trails

4. Chevron Learning Pathway

5. Washrooms (seasonal)

6. Water fountains (seasonal)

7. Cross-country skiing (seasonal)

8. Outdoor skating on the lagoon (seasonal)

9. River Cafe

10. Bandstand / Amphitheatre

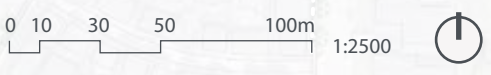
Images to scale

Existing Uses



LEGEND

	Baseball Diamond		Parking Lot
	Tennis / Pickleball Courts		Washroom
	Toboggan Hill		Closed Golf Course
	Tot Lot (Small Playground)		Underground Infrastructure
	Maintenance & Operations		Above Ground Infrastructure



A Tour of the Site

Existing Elements



Baseball Diamonds



Tennis / Pickleball Courts



Tobogganing Hill



Tot Lot (Small Playground)



Operations



Washroom



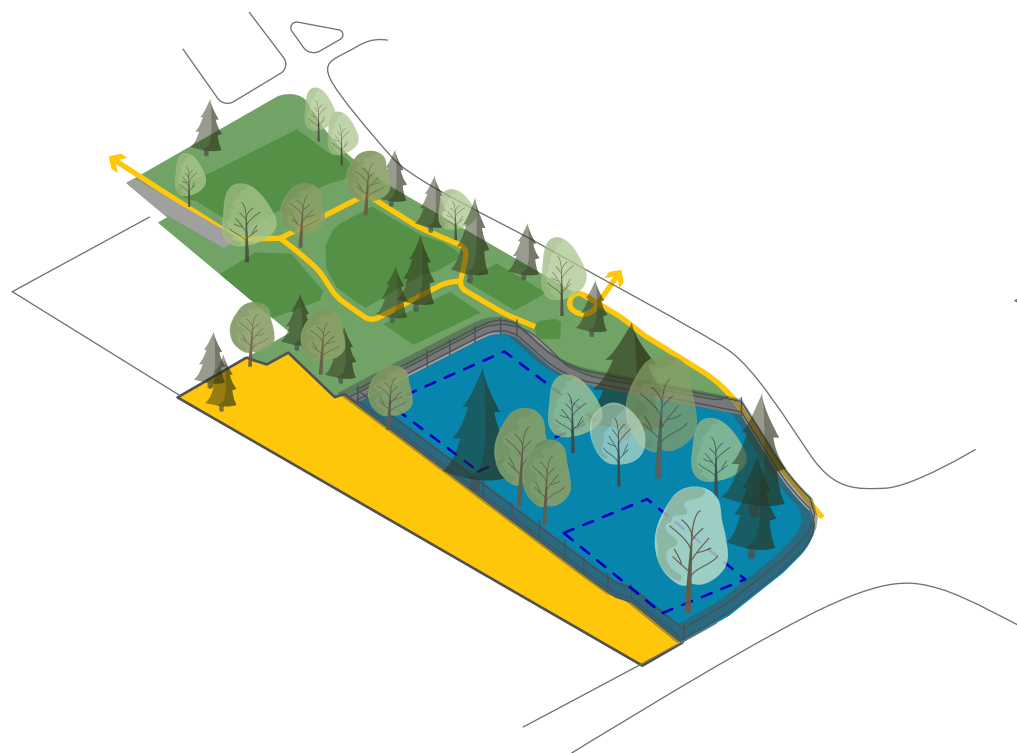
Golf Course



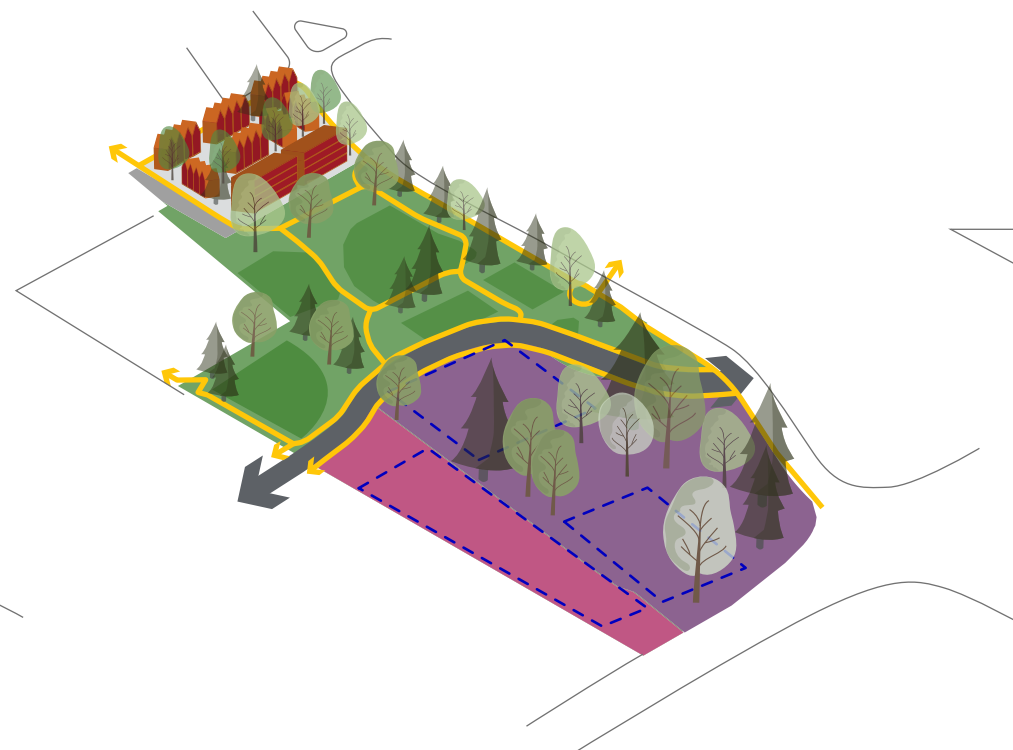
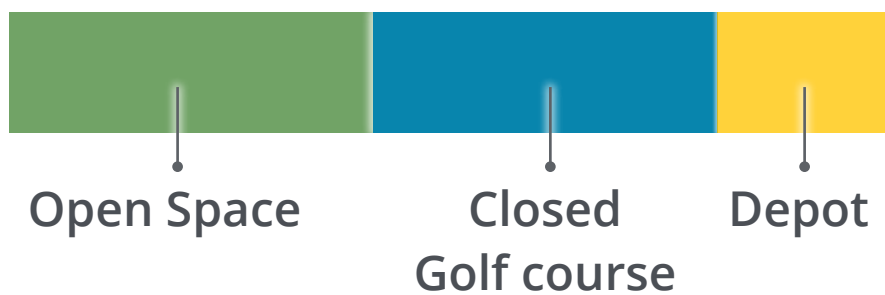
Underground Water Infrastructure



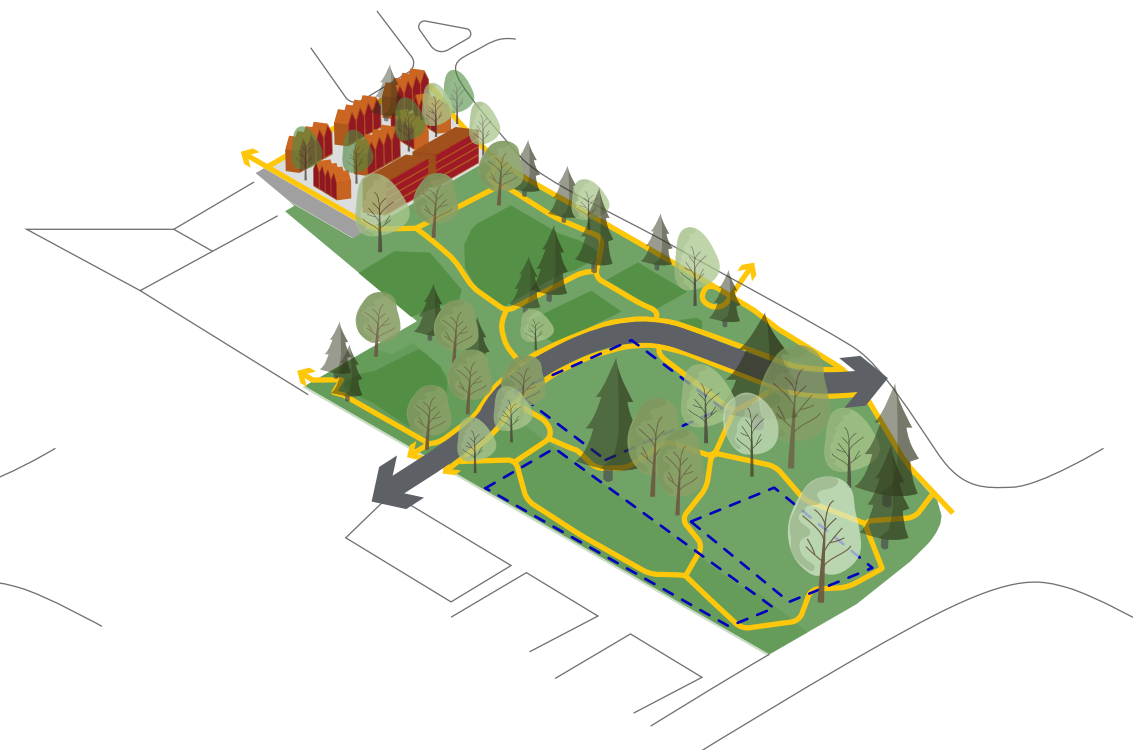
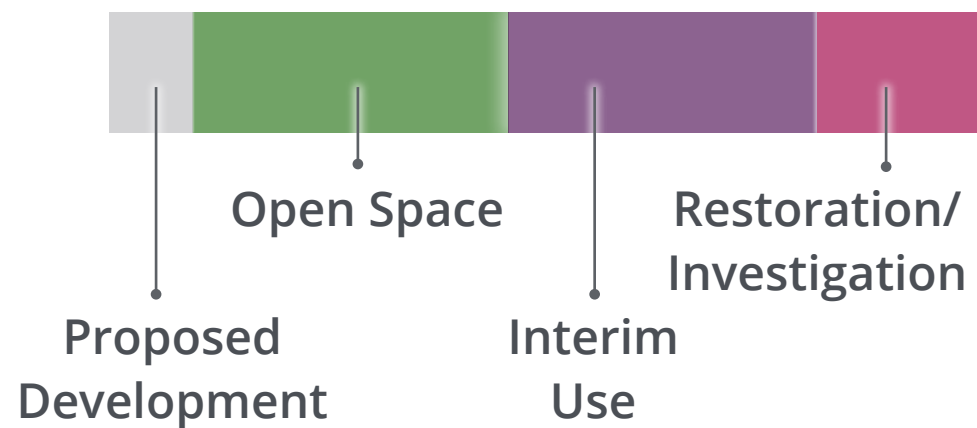
Integrated Green Space Planning



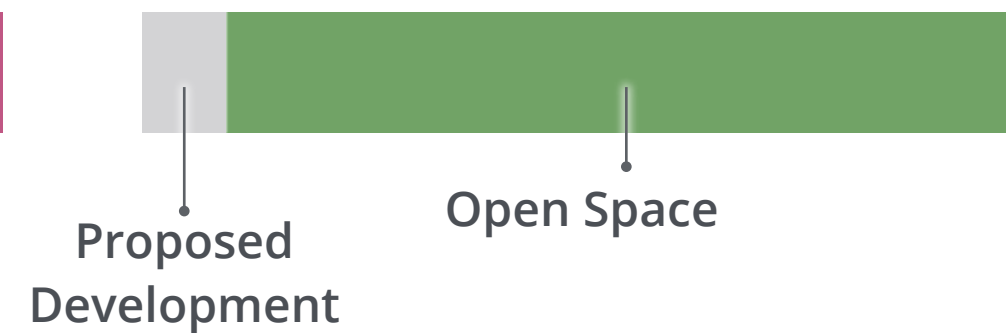
Existing



Short-medium term



Medium-Long term



Potential Park Elements & Experience

Park Use & Amenities

PARK USE & AMENITIES

Picnic Areas
Playground
Workout areas
❄ Skating path
Sports Fields

- Baseball
- Soccer
- Cricket
- Rugby
- Frisbee
- Tennis
- Pickleball
- Basketball
- Pump track



Prairie Winds Park, Calgary



East Village Dog Park, Calgary



Richmond Hill Skate Trail, Toronto



Cruickshank Park, Toronto



South Glenmore Pump Track, Calgary

Potential Park Elements & Experience

Community & Placemaking

COMMUNITY & PLACEMAKING

- ❄ Plaza / gathering spaces
- Community Gardens



Hillcrest & Riley Parks, Vancouver



Hillcrest & Riley Parks, Vancouver



Bowness Railway Community Garden



Jean Sibelius Square Park, Toronto

Potential Park Elements & Experience

Connectivity and Circulation

CONNECTIVITY & CIRCULATION

- Major promenades
- Minor trails
- Multi-use paths
- Gateways
- Cross country skiing routes



Sandy Beach Park, Calgary



Blakiston Park, Calgary



Edgemont Park, Calgary



St James Park, Toronto

Potential Park Elements & Experience

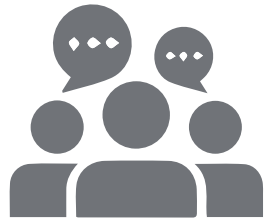
Nature and Sustainability

NATURE & SUSTAINABILITY

- ❄ Flexible open lawn
- Wooded areas
- Fallow grasslands
- Naturalized/no mow areas
- Planted/manicured areas



Join the Conversation.



Facilitated Q & A

Scope 1. Land Use Application
&

Scope 2. Richmond Green Needs Assessment



On-line Survey

1. Identify how the site is used today and note any potential areas of concern and room for improvement.
2. Prioritize what types of park elements and experiences would you like to see in Richmond Green?

Wrap Up.

