

Welcome!

Sarcee Trail / Richmond Road S.W. Interchange Functional Planning Study Information Session

Please review the presentation boards and discuss the study and draft recommended plan with our staff. We will be happy to answer your questions and look forward to getting your feedback.

Please visit calgary.ca/sarceerichmond for more information.





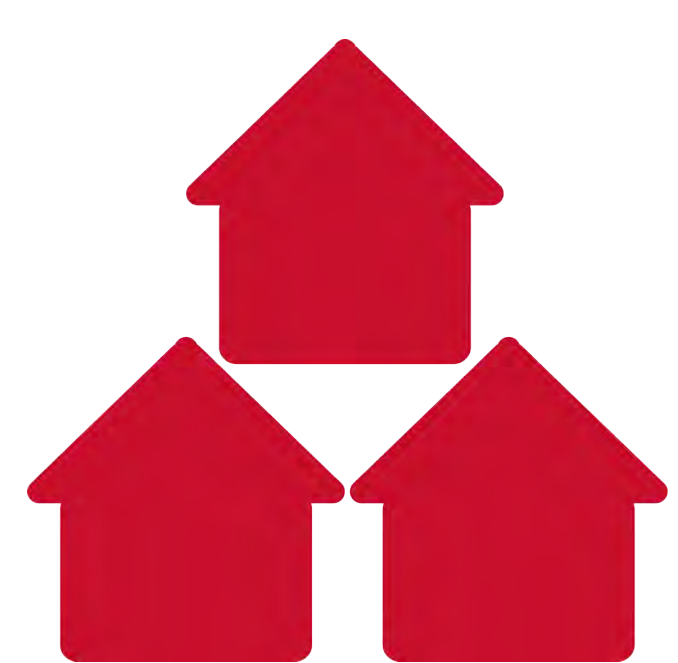
What We Heard...Engagement Findings

During the first phase of engagement, we asked stakeholders to help prioritize the criteria we used to evaluate the different proposed designs. Based on your feedback, the top three criteria for the community were:



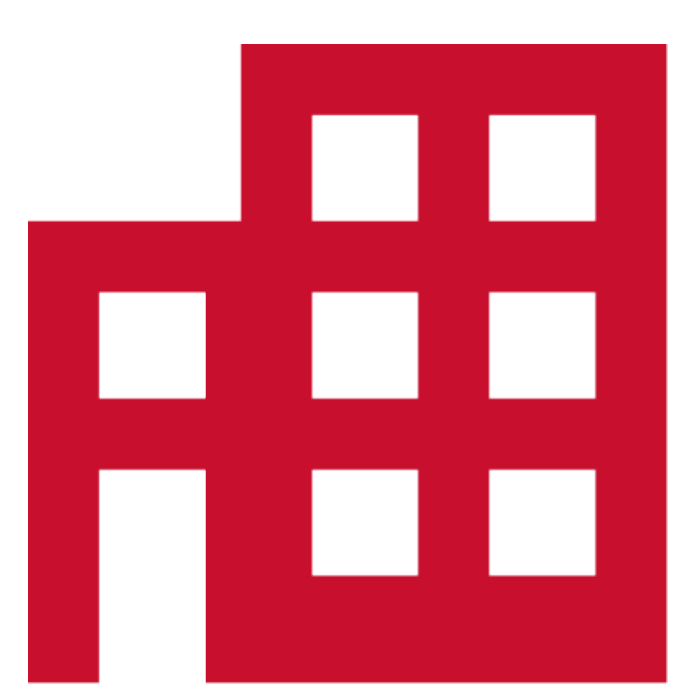
Vehicle accommodation

Includes considerations such as traffic flow, number of lanes and weaving areas.



Ease of community access

Looks to improve directness of travel into communities for residents.



Business access

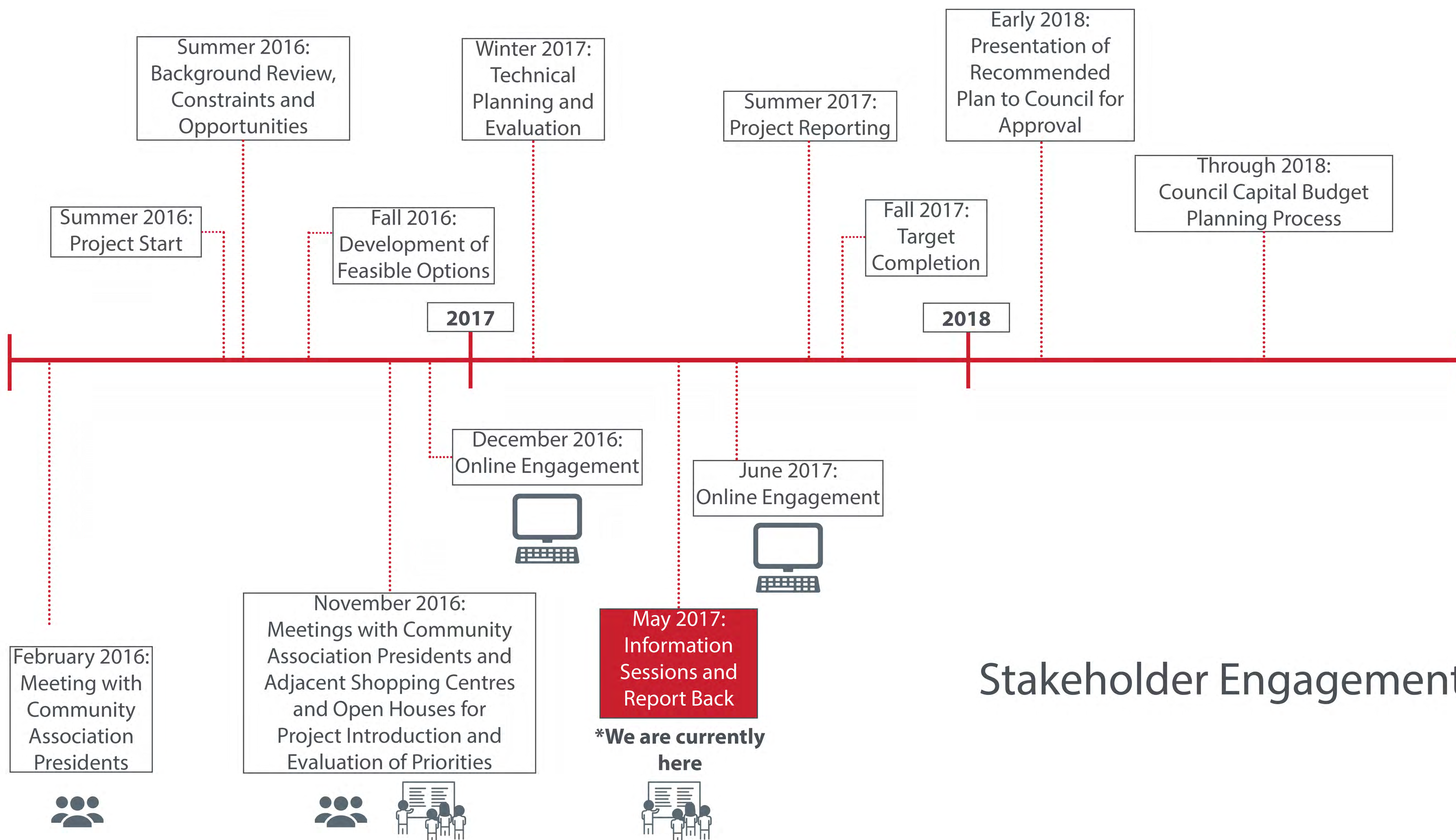
Considers directness of travel into and out of shopping centres, as well as access for delivery vehicles.

We also asked for your general feedback regarding the project and our three proposed designs. Key themes from these comments included:

- **Traffic flow:** Stakeholders wanted to make sure the final recommended design would not hinder the flow of traffic on Sarcee Trail or Richmond Road.
- **Cut-through traffic:** Residents wanted to maintain access to their communities while reducing the amount of cut-through traffic, especially along Sierra Morena Boulevard and within the community of Glamorgan.
- **45 Street S.W. closure:** Glamorgan residents were concerned about access to their community with the upcoming closure of the 45 Street access at Glenmore Trail due to the future Southwest Ring Road.
- **Weekend / holiday shopping access:** Stakeholders wanted to improve access and the ability to exit shopping centres during peak times, such as holidays and weekends.

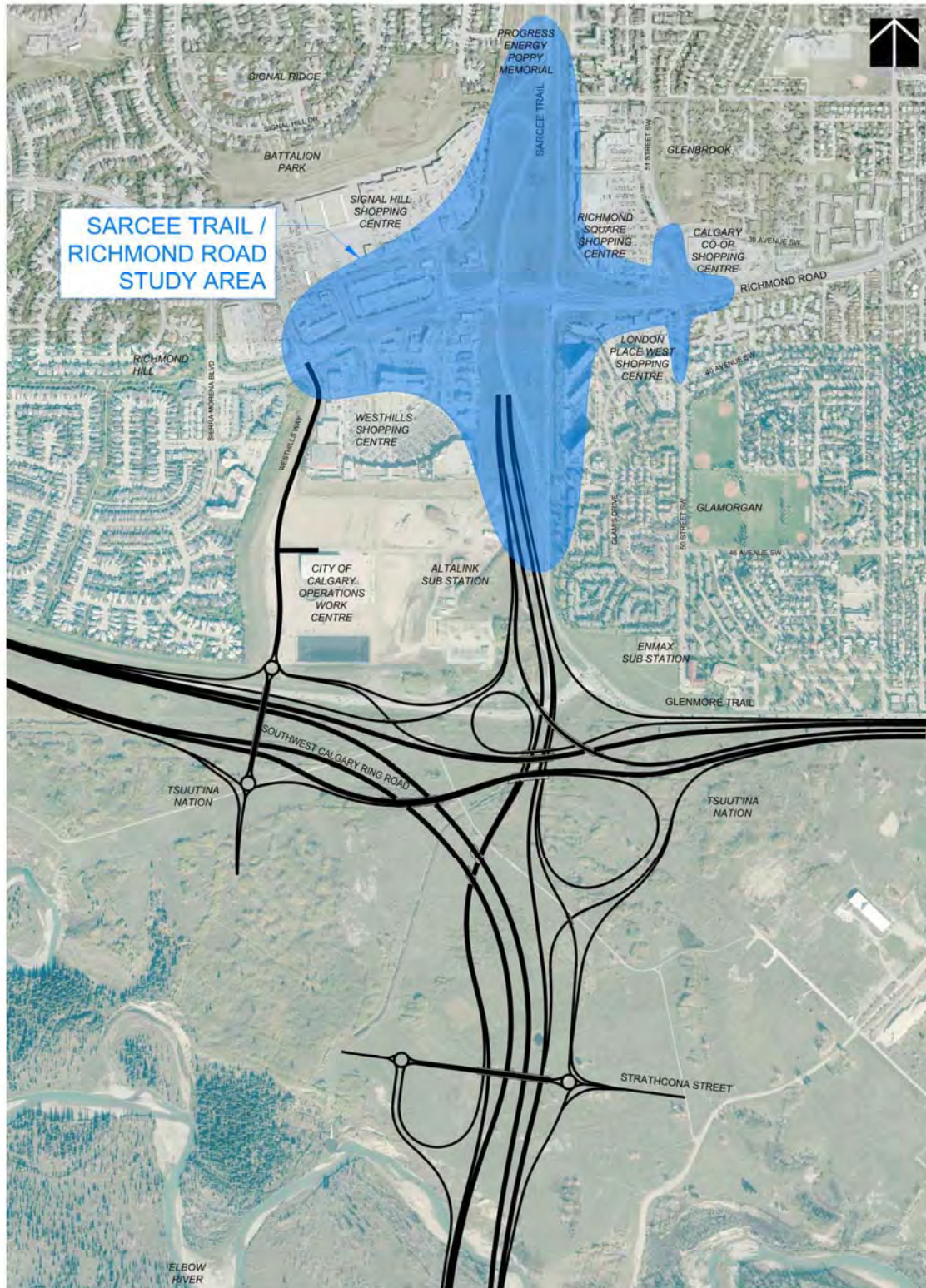
Project Process Timeline

Functional Planning Study





Project Scope

Location Plan and Key Community Features



LEGEND

-  SOUTHWEST CALGARY RING ROAD
-  STUDY AREA

Project Background

Connections and area improvements

In 2015, The City completed a network study that identified downstream impacts resulting from construction of the Southwest Calgary Ring Road. The study identified a range of improvements that will be made to the transportation network, which are shown here. These various projects will be implemented or studied further in the coming years, as noted below.

The Sarcee Trail / Richmond Road interchange was identified as a potential downstream project in the network study. Hence, this functional planning study was initiated to confirm the best interchange plan at this location. The interchange is not currently a funded project; however, the planning study will provide The City with information needed to include the interchange as a candidate project in future budget updates.

This functional planning study will not specifically address other locations in the downstream study area; however, they all remain part of the study context. The City will continue to engage area communities on these projects as they are advanced in the coming years.

Project List:

- 2. Westhills Way. S.W. : design and construct**
A new road connecting to Richmond Road and Westhills commercial area.
- 3. Glenmore Trail: design and construct**
Reconstruct and widen Glenmore Trail to six lanes, between 37 Street S.W. and Crowchild Trail.
- 4. Glenmore Trail and Crowchild Trail interchange: design and construct**
Modify interchange for a short term improvement to help accommodate opening day traffic volumes. Recommend study for long term solutions.



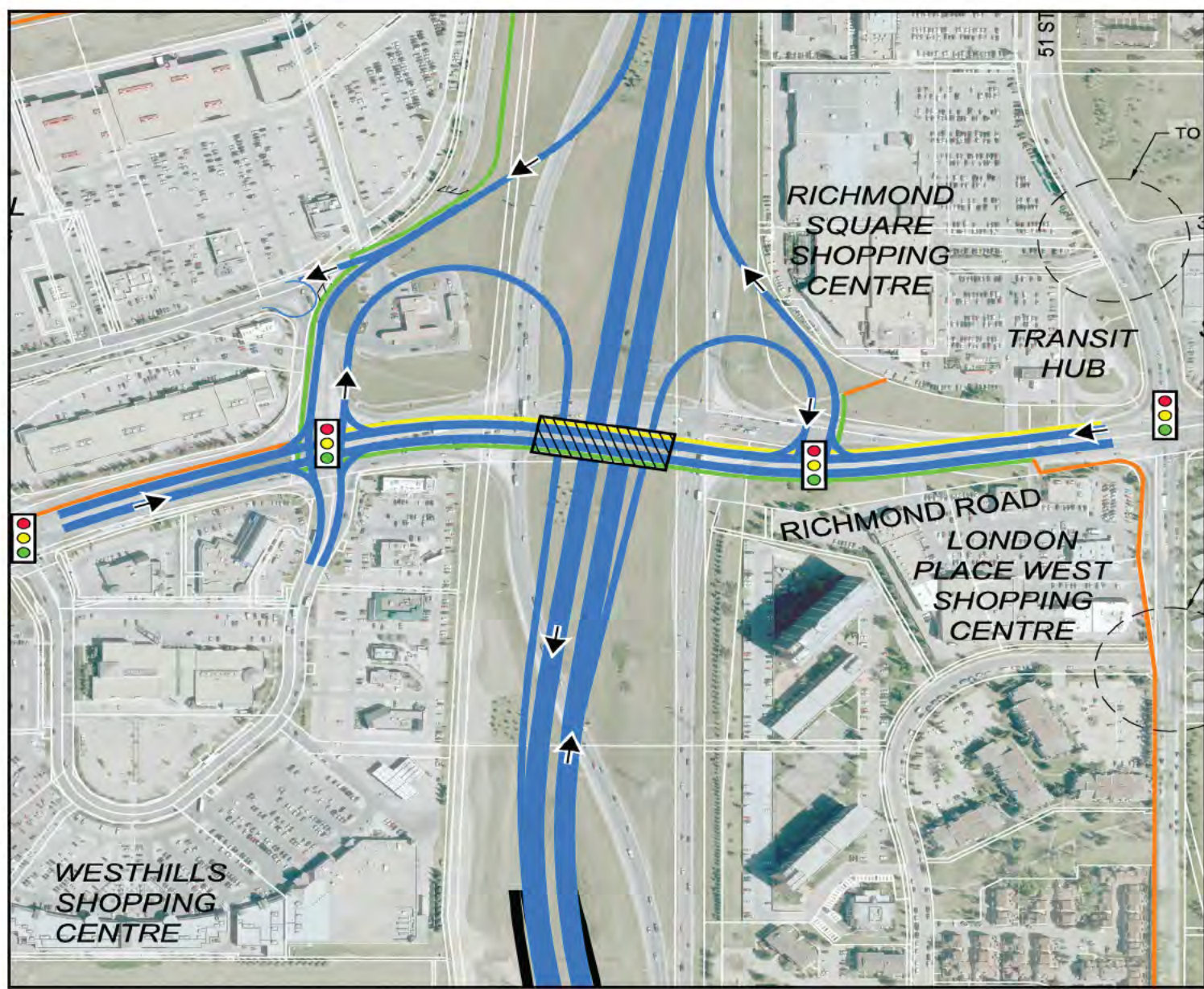
Evaluation Criteria - What We Heard

- Stakeholders indicated that vehicle accommodation, ease of community access and shopping and business access were the top priorities of the evaluation criteria.
- The evaluation criteria are listed by category of priority (high, lower and City policy).

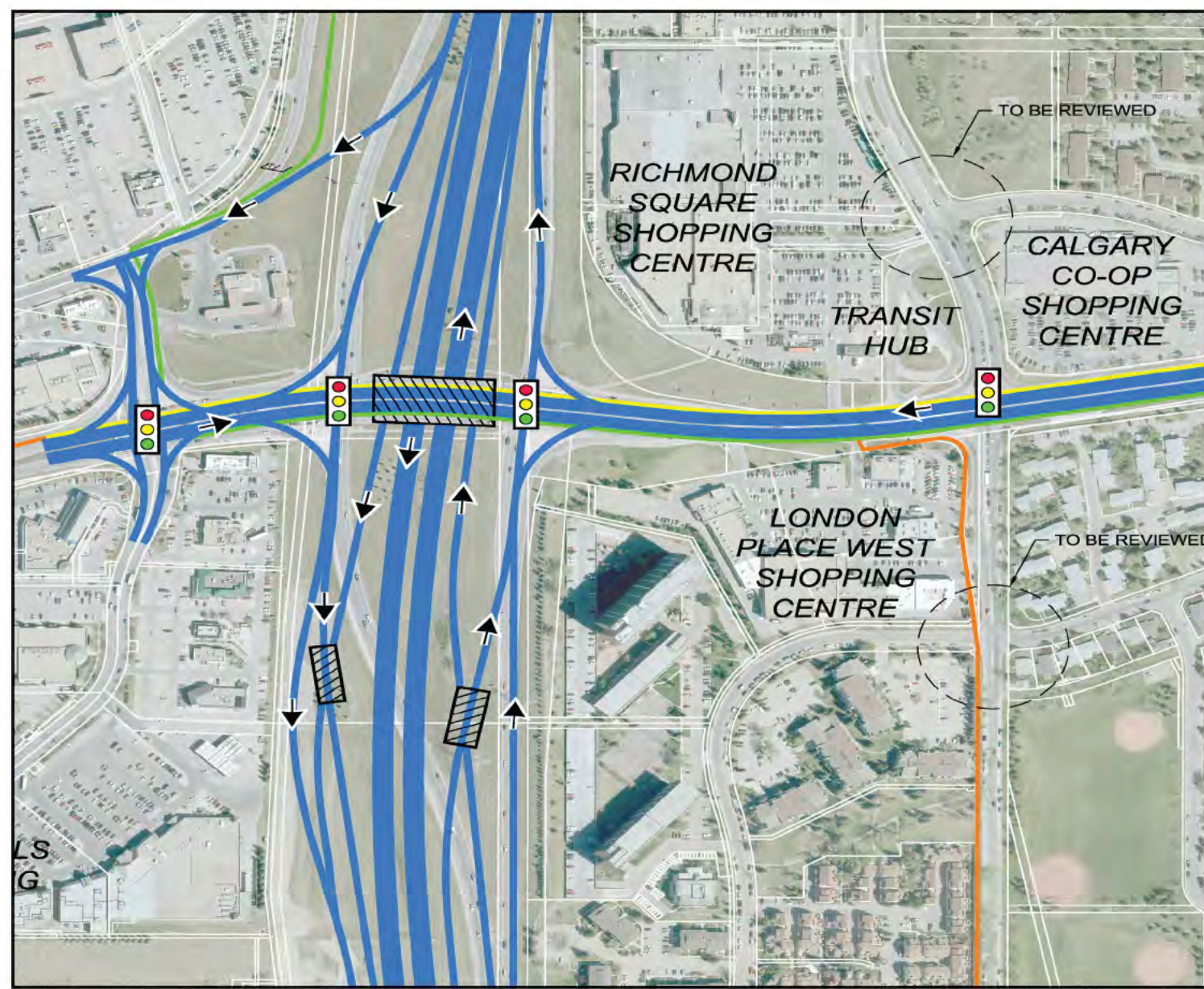
Category	Evaluation Criteria
Public High Ranked Priority	Vehicle Accommodation
	Ease of Community Access
	Shopping and Business Access
Public Lower Ranked Priority	Walking / Cycling / Disabled Persons Accommodation
	Constructibility / Impacts During Construction
	Noise Impact
	Construction Cost
	Transit Accommodation
	Visual Impact
City Policy Criteria	City Owned Property Impacts
	Adherence to Design Guidelines

Evaluation Results

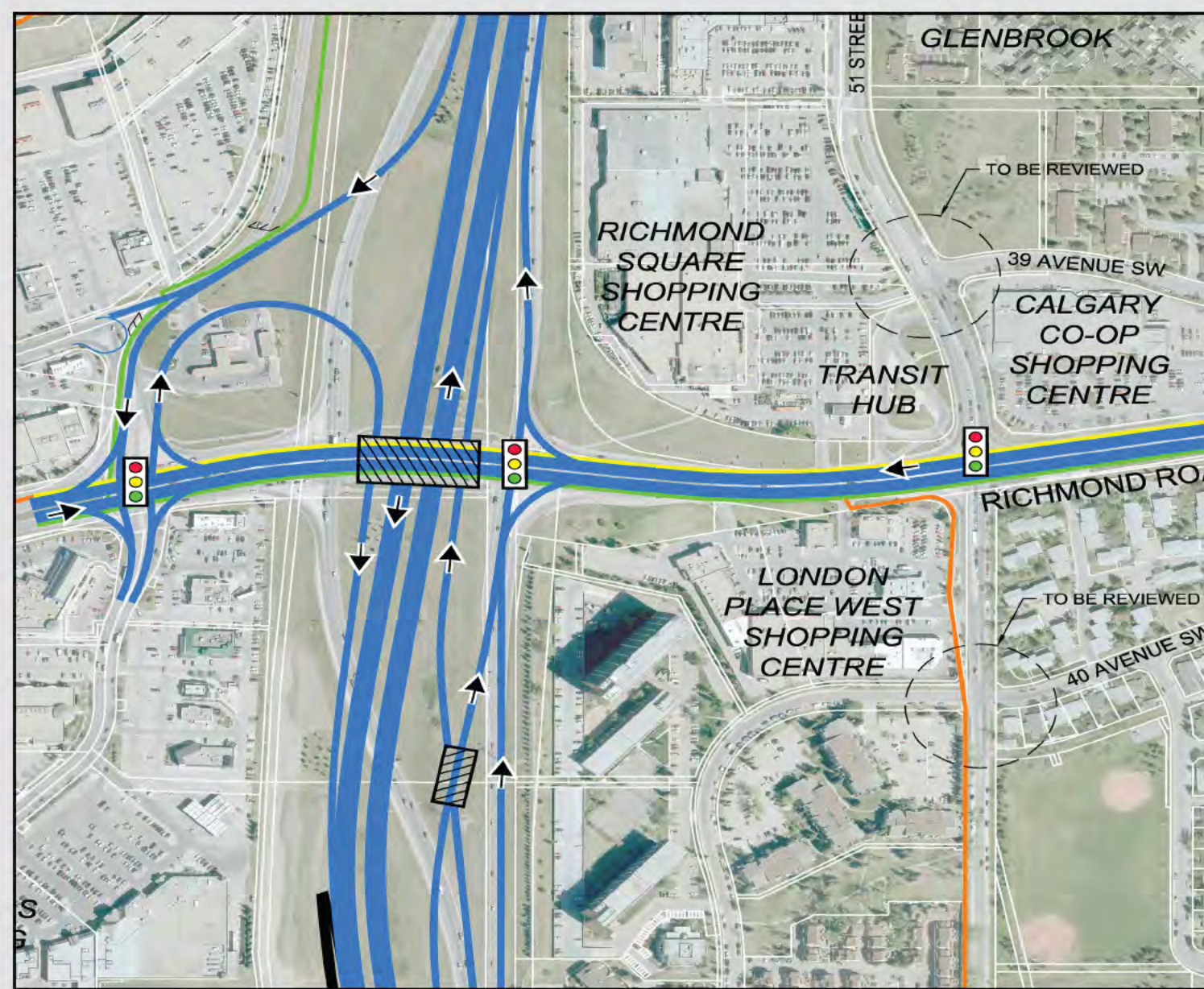
Concept A:
Partial Cloverleaf (Parclo)



Concept B:
Diamond



Concept C:
Parclo / Diamond (Hybrid)



Evaluation Criteria

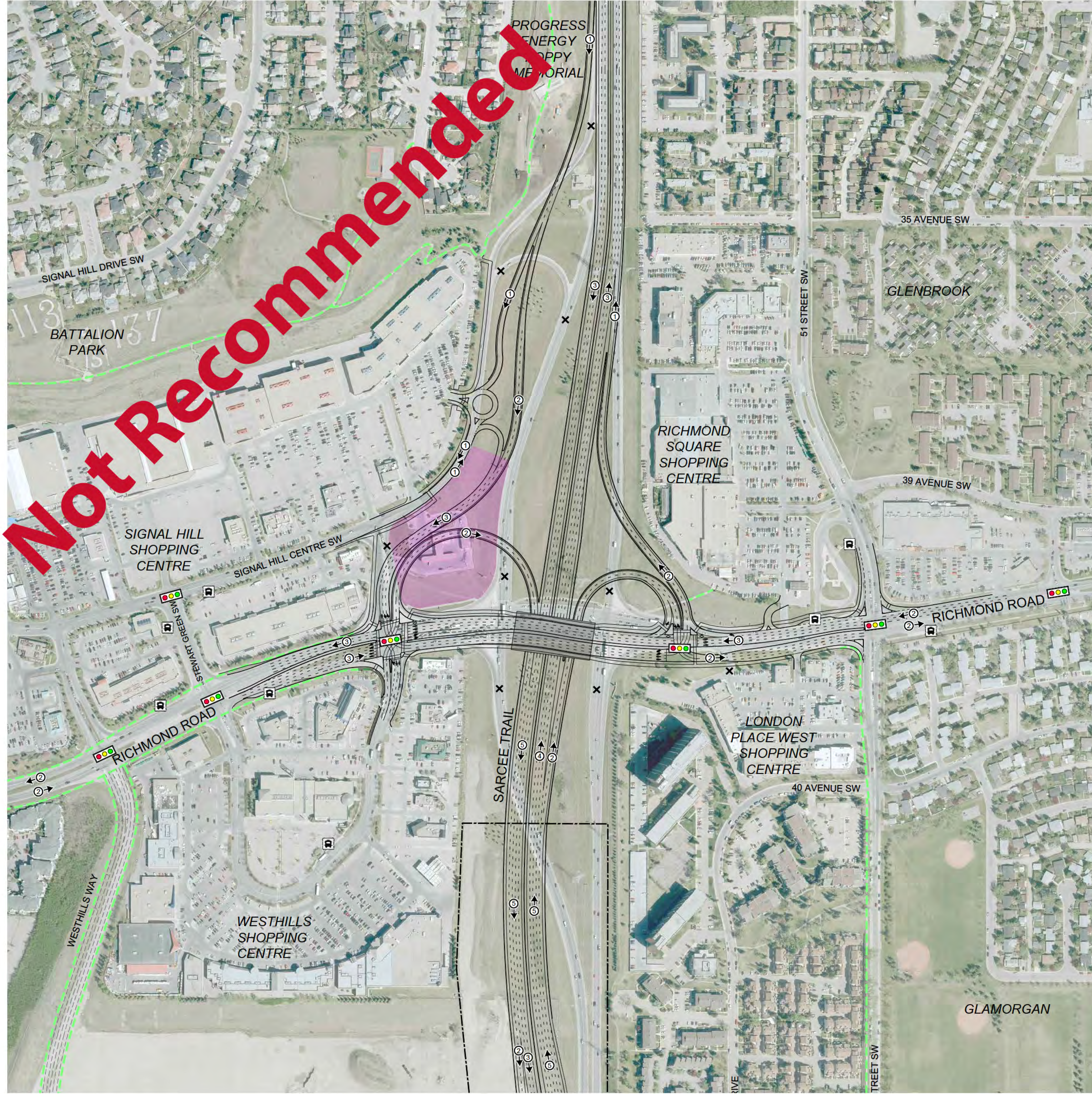
Public - High Ranked Priority	Vehicle Accommodation			
	Ease of Community Access			
	Shopping and Business Access			
Public - Lower Ranked Priority	Walking / Cycling / Disabled Persons Accommodation			
	Constructibility / Impacts During Construction			
	Noise Impact			
	Construction Cost			
	Transit Accommodation			
	Visual Impact			
City Policy Criteria	City Owned Property Impacts			
	Adherence to Design Guidelines			

Legend: Meets evaluation criteria Somewhat meets evaluation criteria Does not meet evaluation criteria

- Using what we heard from Calgarians about their priorities of the evaluation criteria, along with a technical evaluation of each concept, the project team developed the draft recommendation for the Sarcree Trail / Richmond Road S.W. Interchange.
- Concept C best meets what Calgarians indicated are their top three priorities: Vehicle Accommodation, Ease of Community Access and Shopping and Business Access.
- Concept C also offers the most opportunity to improve on the lower ranked priority evaluation criteria.
- Traffic volumes on Richmond Road are about the same between all concepts.
- The feedback received during these sessions and online, along with additional technical analysis, will help the project team refine and finalize the recommended plan to best meet each of the evaluation criteria.

Interchange Concepts Not Moving Forward

Concept A: Partial Cloverleaf (Parclo) Interchange



Why this concept is not moving forward:

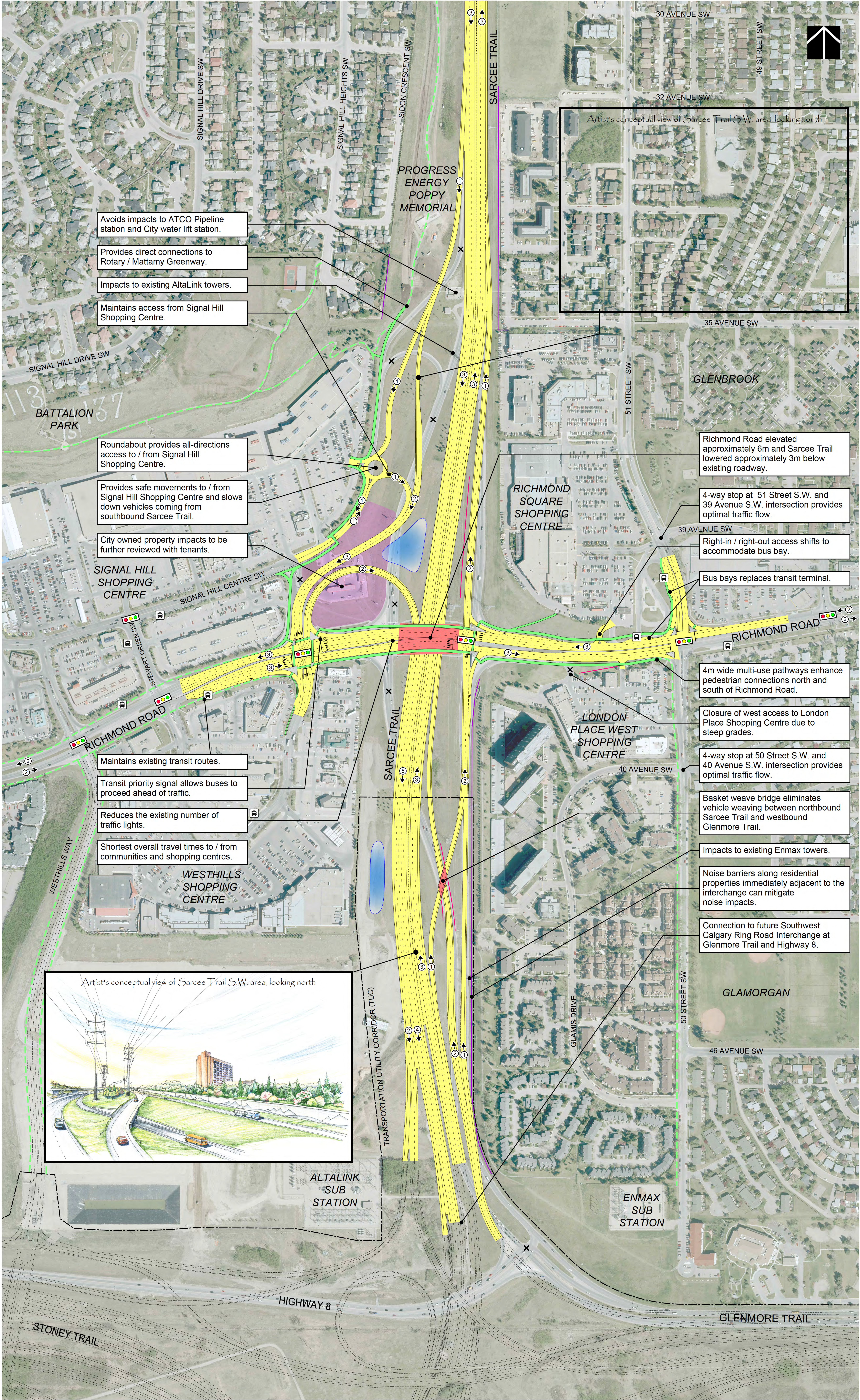
- Longer travel times to / from communities and shopping centres as compared to draft recommended plan.
- Community and business access from northbound Sarccee Trail to Richmond Road is not direct.
- The design of the east ramp of the interchange is less compatible with Provincial ring road standards.
- Does not provide significant construction cost savings over draft recommended plan.

Concept B: Diamond Interchange



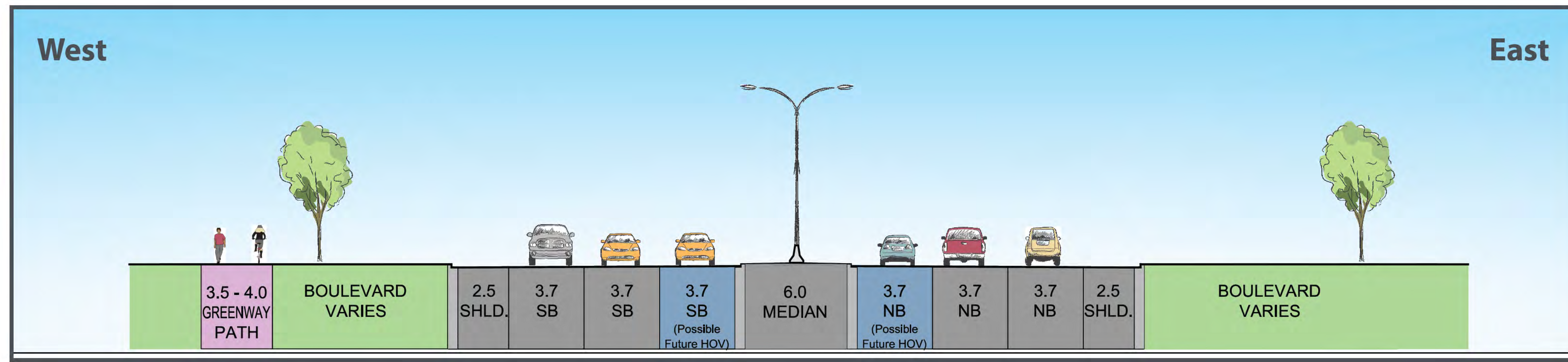
Why this concept is not moving forward:

- Longest travel times to / from communities and shopping centres as compared to draft recommended plan.
- Poorest overall traffic operations and more weaving segments.
- Doesn't decrease the number of existing traffic signals.
- Has four more at-grade pedestrian connections where people have to cross vehicle traffic as compared to draft recommended plan.
- Highest construction impacts and costs.



Recommended Typical Cross Sections

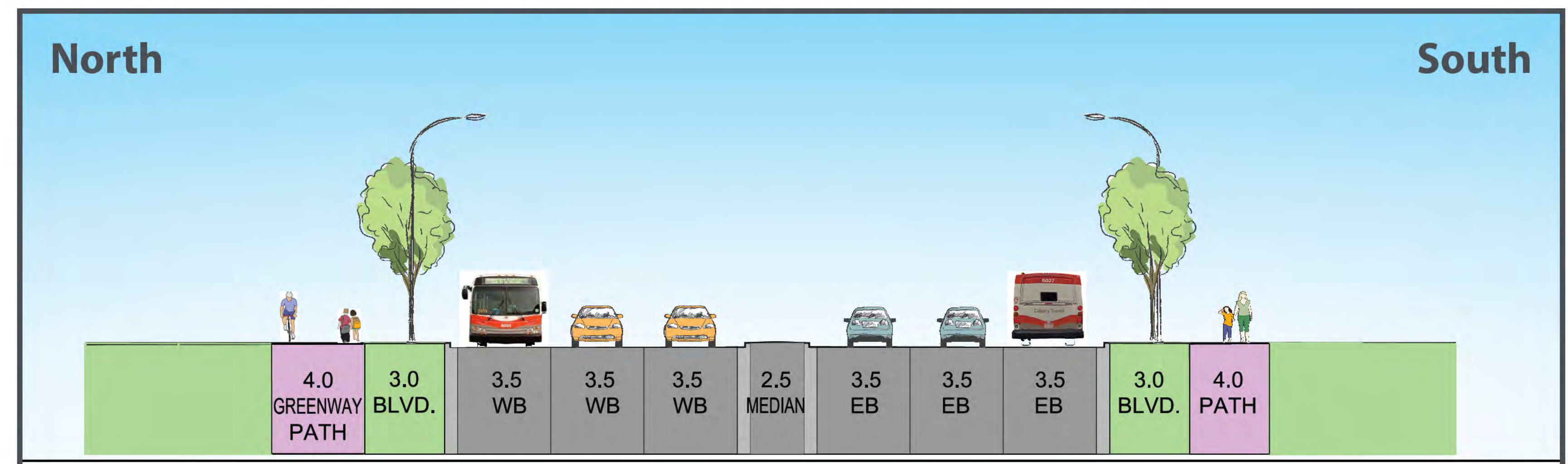
Sarcee Trail (looking North)



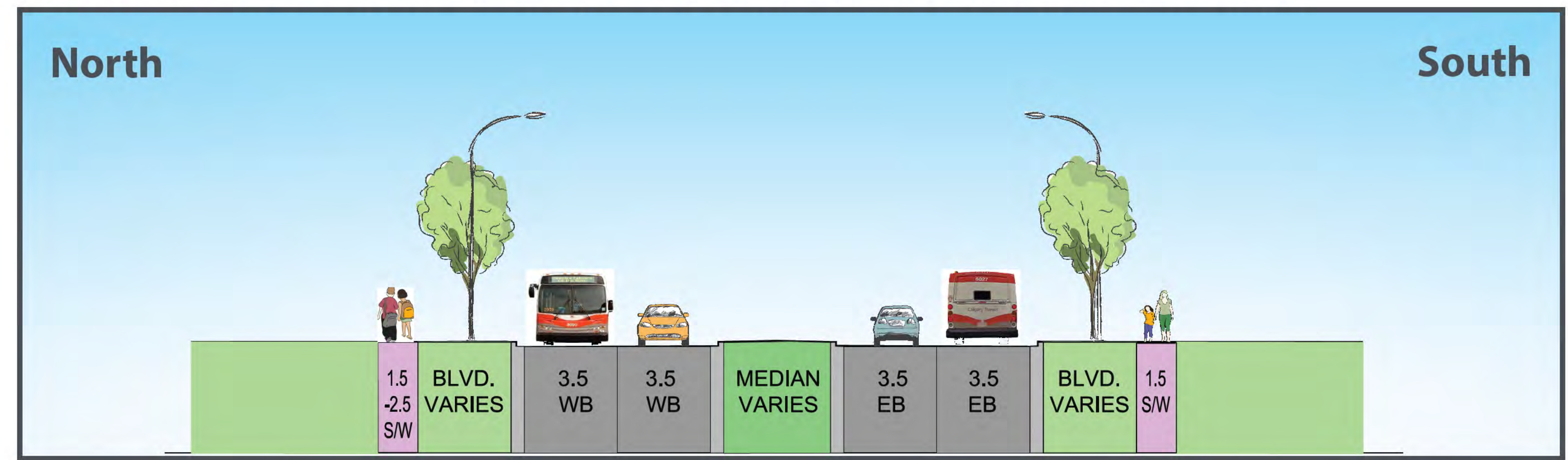
Sarcee Trail cross section will also continue to include two major overhead power lines, gas pipelines and other utilities (location of road and utility lines vary along this section of the corridor).

Richmond Road (looking East)

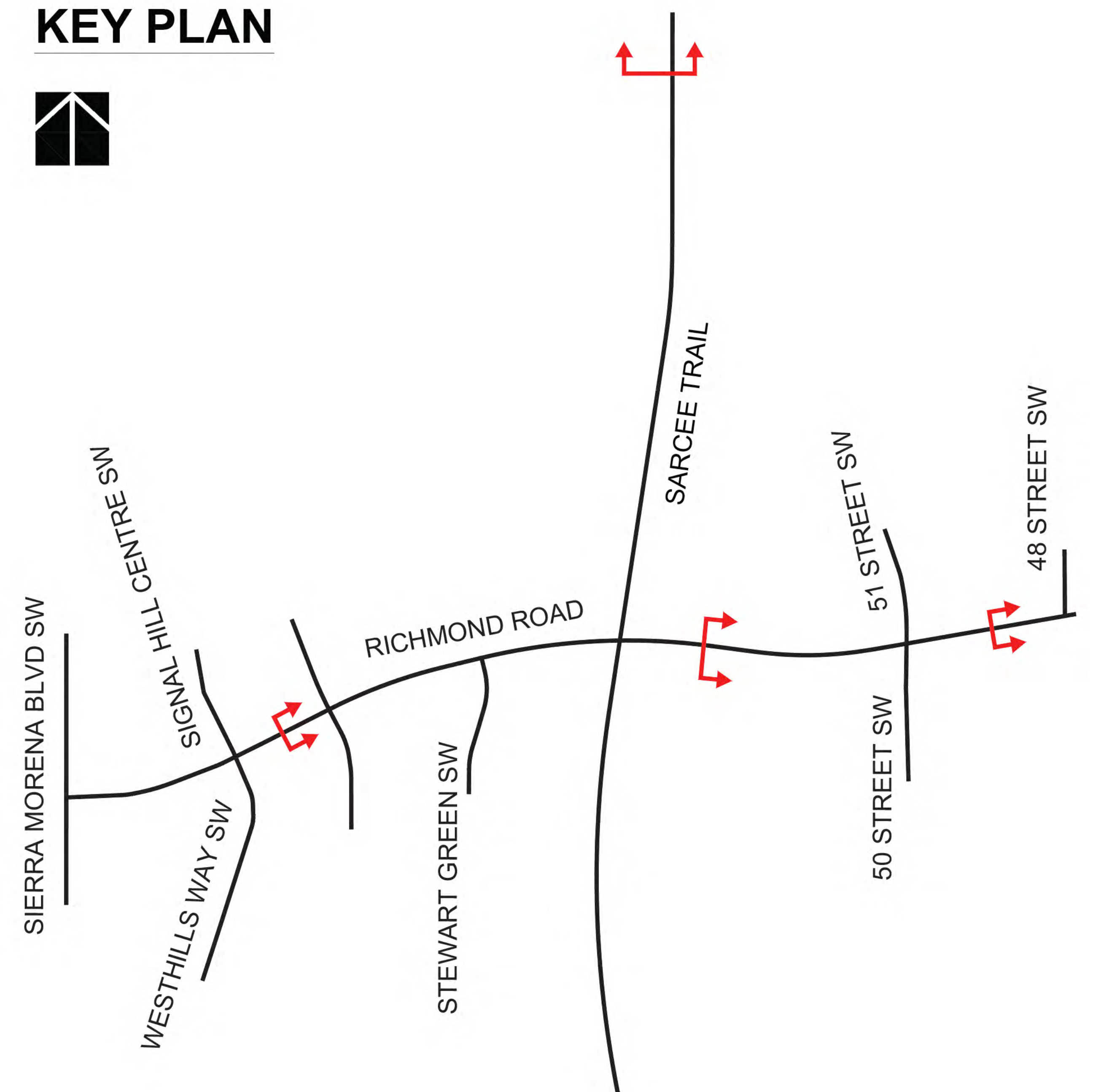
Between 51 Street and Stewart Green



East of 51 Street and west of Stewart Green



KEY PLAN



Active mode elements that were under consideration on Richmond Road

Sidewalks provide exclusive space for pedestrians.



Credit: brentwoodstation.blogspot.ca

Multi-use pathways separates users from vehicle traffic.



Credit: The Atlanta BeltLine

Bike lanes provide exclusive space for cyclists.



Credit: nwinco.blogspot.ca

Not Recommended

Protected cycle tracks buffer cyclists from vehicle traffic.



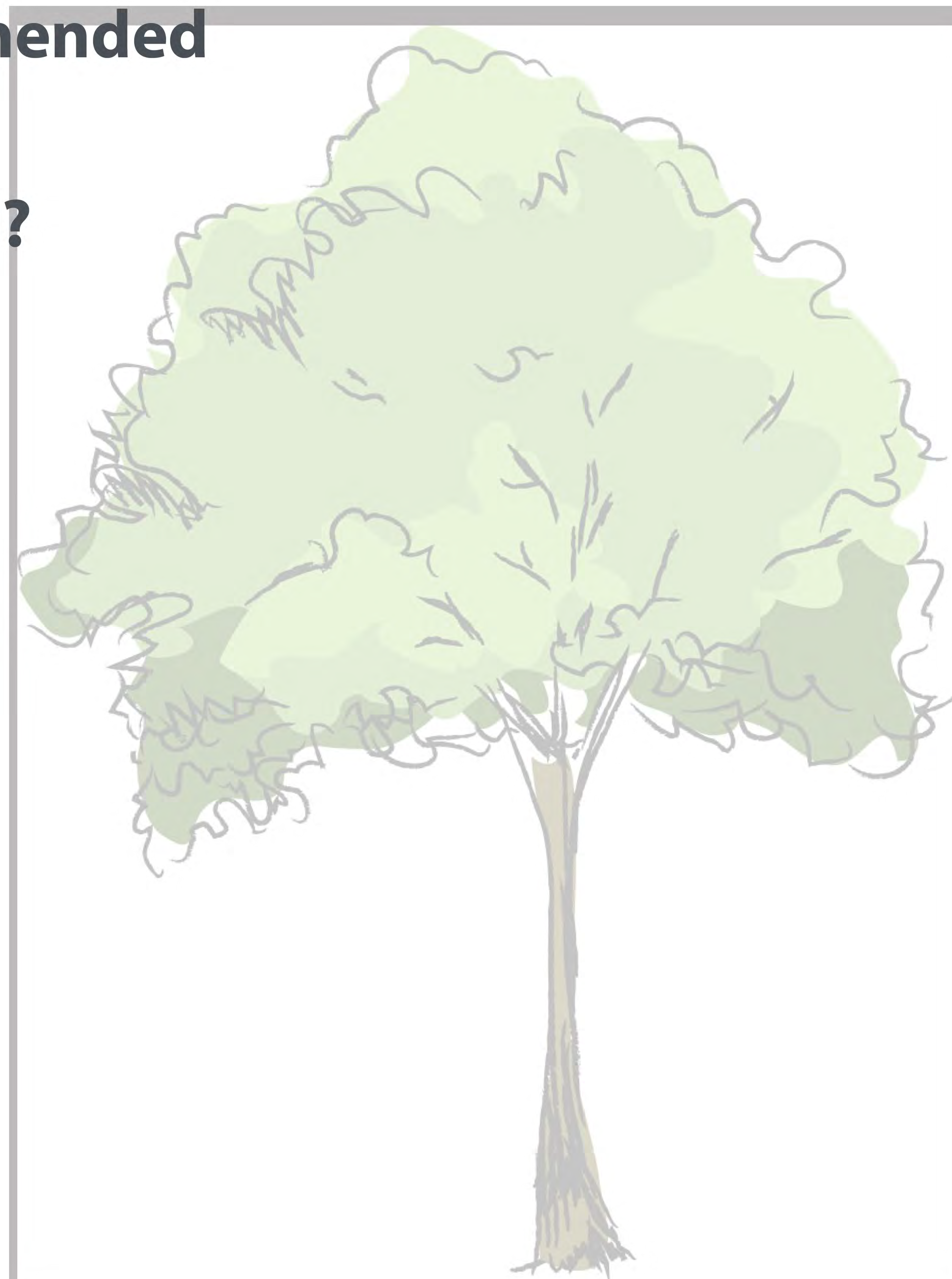
Credit: Suzy Monkey

Not Recommended

Tell Us More.

Give us your feedback on the draft recommended interchange design!

What do you like? What could be improved?





Thank You for Participating in this Session!

Next steps:

The feedback received during these sessions and online will help the project team refine and finalize the recommended plan.

For more information about the study and online engagement opportunities, please visit:
calgary.ca/sarceerichmond
or **call 311.**

The online engagement tool will be open from **May 30 - June 14**
- have your say!

