



Safety barriers and access to Ogden Road

Notice Date: December 5, 2025

This is a reminder that there is no official access to Ogden Road from the alley north of the Esso at 68 Avenue S.E. Using this unofficial route to access Ogden Road presents a serious safety risk to all road users, particularly during live construction activity. To address this, our contractor will be installing concrete barriers as indicated on the below map.

What

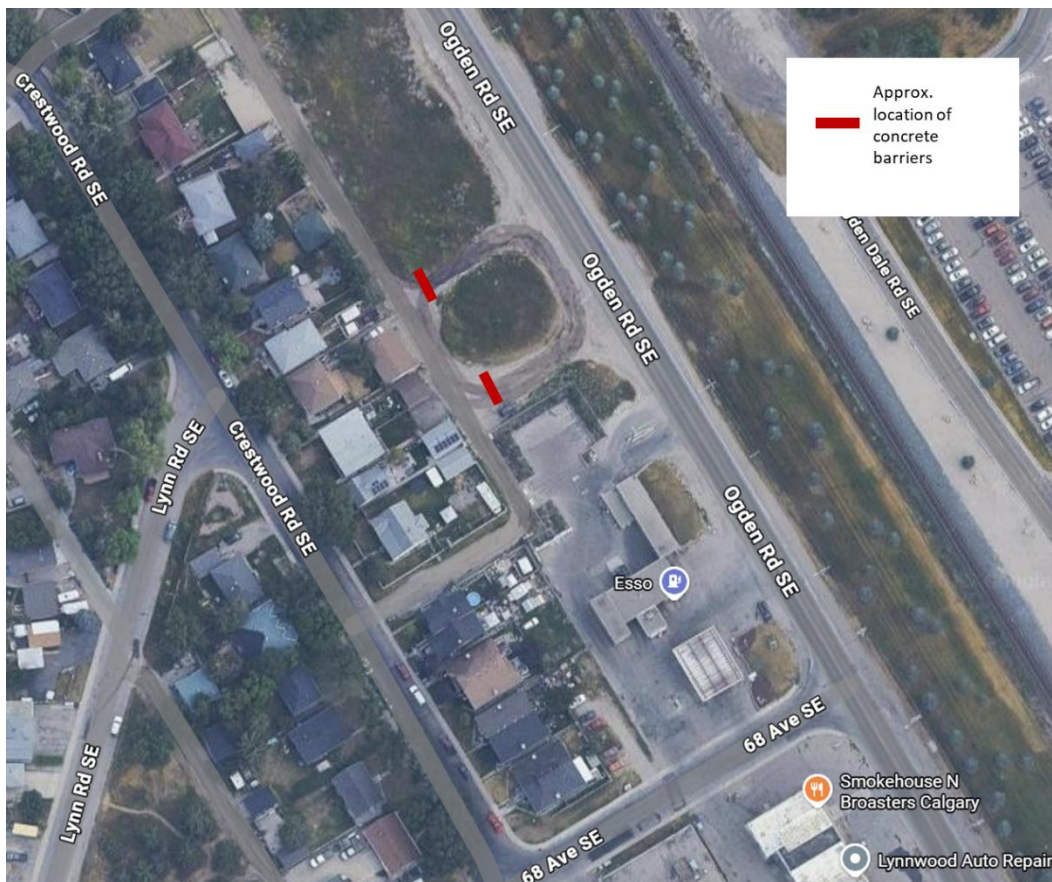
Installation of concrete barriers to prevent access to Ogden Road S.E. from the alley north of 68 Avenue S.E.

When

As early as December 8, 2025

Where

Ogden Road S.E., north of 68 Avenue S.E.





Green Line LRT

What is this work?

Ensuring public safety in areas impacted by Green Line construction is a major responsibility. Our goal is to minimize the impact on the public and maintain their ability to get around the city while ensuring their safety.

While some residents may have been using this route in the past, it is not an official road. Accessing Ogden Road via this route presents serious safety risks to all road users, particularly during live construction. Concrete barriers will be installed and will remain in place throughout the Ogden Road Realignment project to prevent unsafe access to Ogden Road and the construction site.

As part of this project, a multi-use pathway will be constructed along the west side of Ogden Road, meaning the unofficial access will be permanently blocked following the end of construction.

How can I stay informed?

More information about the Green Line LRT - S.E. project and current construction is available at [Calgary.ca/GreenLine](https://www.calgary.ca/GreenLine). Construction notices will be published on this website and sent to residents registered for the Green Line newsletter. Please sign up for the Green Line newsletter at <https://www.calgary.ca/green-line/contact-us.html>

If you have any questions, please call 311 or email the project team at greenline@calgary.ca

About Green Line LRT – S.E. Project

The S.E. Segment, from Shepard in the southeast to the Event Centre/Grand Central Station in the Beltline, will build the first 16 kilometres of an overall 46-kilometre vision, before connecting with the future Downtown Segment and into the existing Red and Blue LRT Lines. Including the Downtown Segment, Phase 1 will build, 17.2 kilometres of twin-track LRT infrastructure, 12 new stations, a maintenance and storage facility, three Park and Ride lots, and 28 new modern low-floor light rail vehicles.