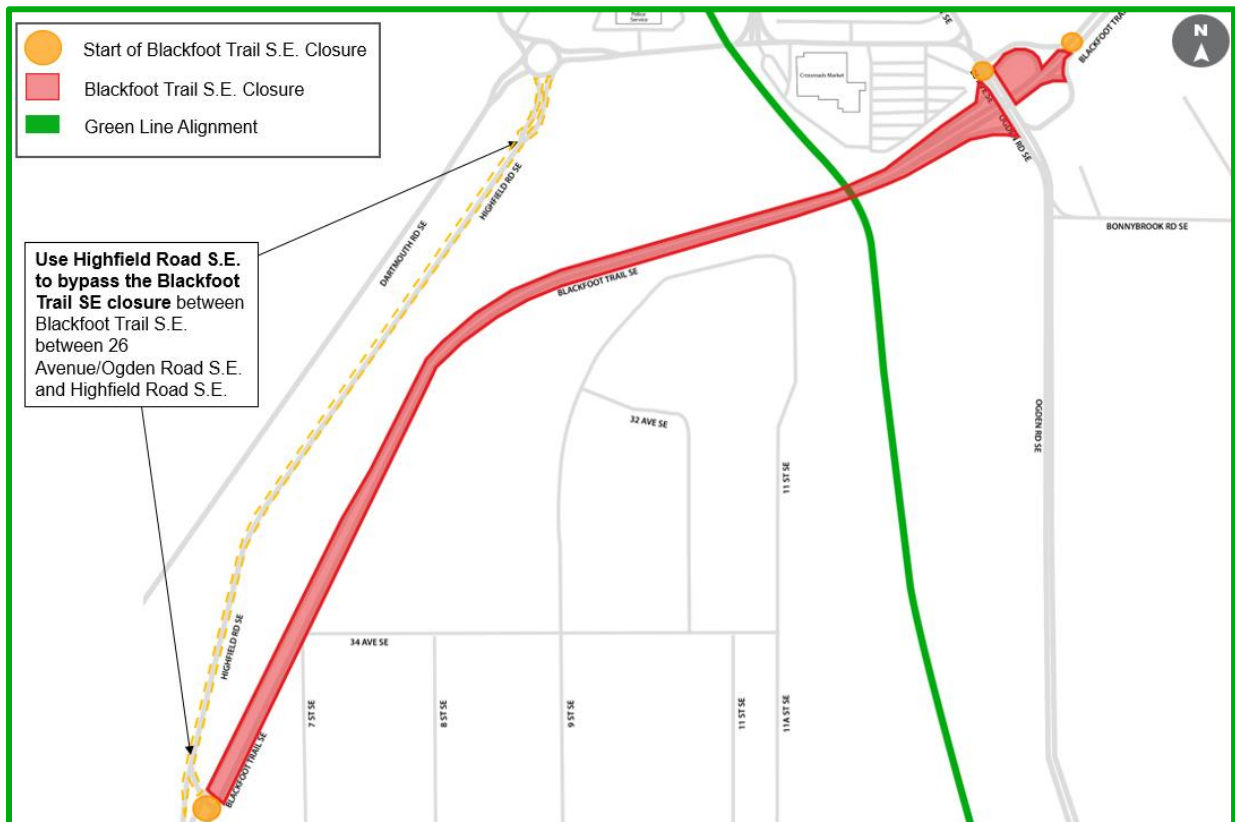




Blackfoot Trail LRT Bridge – Overnight Road Closures

Notice Date: May 21, 2026

From May 27-28, the Green Line LRT – SE Project will be erecting bridge girders for the Blackfoot Trail LRT Bridge. The bridge girder work requires the closure of Blackfoot Trail S.E. between 26 Avenue/Ogden Road S.E. and Highfield Road S.E. The closures will occur each night from 9:00pm to 5:00am. To bypass the closure, use Highfield Road S.E. as an alternate route. May 29 is being held as a contingency date in the event work cannot be completed between May 27-28. If a May 29 closure is required, it will be communicated via a subsequent construction notice.



What

Bridge girder installation

Where

Blackfoot Trail S.E. between 26 Avenue/Ogden Road S.E. and Highfield Road S.E.

When

May 27-28, between 9:00pm and 5:00am each night

Impacts



Lane closures



Detours



Green Line LRT

What is the work?

Installing bridge girders over Blackfoot Trail S.E. as part of construction on the Blackfoot Trail LRT Bridge.

Girders are large horizontal beams that support the bridge. Installing them entails lifting them into position and setting them onto the bridge abutments (supports). Once they are aligned and secured, they will create the structure that carries the weight of the LRT infrastructure on top of it.

How can I stay informed?

Visit [Calgary.ca/GreenLine](https://calgary.ca/GreenLine) for more information about the Green Line LRT – SE Project, current construction, and to sign up for the Green Line newsletter.

If you have any questions, please call 311 or email the project team at greenline@calgary.ca

About Green Line LRT – SE Project

The SE Segment, from Shepard in the southeast to the Event Centre/Grand Central Station in the Beltline, will build the first 16 kilometres of an overall 46-kilometre vision, before connecting with the future Downtown Segment and into the existing Red and Blue LRT Lines. Including the Downtown Segment, Phase 1 will build, 17.2 kilometres of twin-track LRT infrastructure, 12 new stations, a maintenance and storage facility, three Park and Ride lots, and 28 new modern low-floor light rail vehicles.