



Green Line LRT

Upcoming Road Closures for Utility Work

ADDITIONAL IMPACTS ANTICIPATED TO BEGIN: May 16, 2022

Notice: May 5, 2022

As part of the Beltline Downtown Utility Relocation Project, multiple utility projects are currently in active construction in the Beltline East area. Current projects are impacting 12 Avenue S.E. between 3 Street S.E. and 6 Street S.E. This phase of work will require multiple lane closures, including one full block closure between 5 Street S.E. and 6 Street S.E. The cycle track between 3 Street S.E. and Olympic Way S.E. remains closed during construction on that block. Detour signage will be in place. Two lanes of 12 Avenue between 5 Street S.E. and 6 Street S.E. will be re-opened to facilitate traffic movement for major events. Access to the Macdonald Avenue Bridge will remain throughout construction.

Beginning May 16, the intersection at 5 Street S.E. and 12 Avenue S.E. will be closed for north/south travel. Detours will be in place.

What is the work?

Utility Casing and Deep Utilities (Water, Sanitary, Storm Water) Project

Utility casing installation and deep utility construction is continuing along the southern two lanes of 12 Avenue between Olympic Way S.E. and 6 Street S.E. This will include a closure in the intersection of 5 Street S.E. and 12 Avenue, which will remain in place until the end of June 2022. A temporary access road between 12 Avenue S.E. and 13 Avenue S.E. will be opened as needed to facilitate event egress. Please follow detour signage.

[Additional third-party utility work](#) will also be active in the area. If you have any questions about this specific project, please reach out to ENMAX Customer Relations Team:

403-514-3990

powercustomerrelations@enmax.com

www.enmax.com/projects/greenline

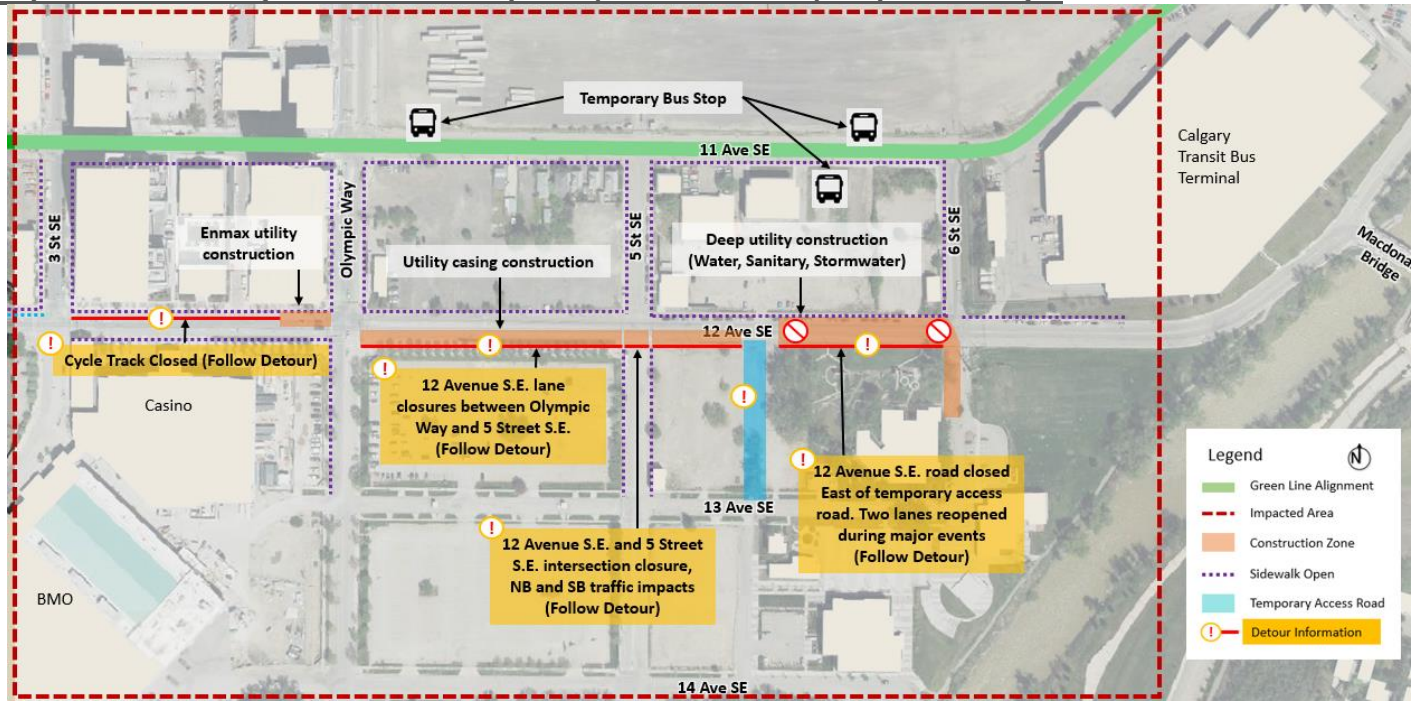
What can you expect?



Utility Casing and Deep Utilities Project

- **NEW: Closure of the two southern lanes of 12 Avenue S.E. at the 5 Street S.E. intersection.**
- Closure of two southernmost lanes on 12 Avenue S.E. between Olympic Way S.E. and 5 Street S.E.
- Full block closure on 12 Avenue S.E. between 5 Street S.E. and 6 Street S.E. Two lanes will be re-opened to accommodate major events.
- Closure of southern sidewalk on 12 Avenue between Olympic Way S.E. and 6 Street S.E.
- Removal of on-street parking.
- General construction noise and increased construction traffic in the area.
- Work is occurring between 7:00 a.m. and 7:00 p.m. daily and may extend beyond 7:00 p.m. if necessary to complete certain portions of work.
- Construction will continue to the end of June, before pausing for Stampede.

Comprehensive Utility Construction Impacts (12 Avenue S.E.) – Updated May 5



***NOTE:** Two traffic lanes to be re-opened on 12 Avenue S.E. between 5 Street and 6 Street S.E. for major events. A temporary access road between 12 Avenue S.E. and 13 Avenue S.E. **will** be opened as needed to facilitate event egress.



Green Line LRT

CONTACT INFORMATION

For more information about the Utility Casings and Deep Utilities Project or if you have any questions about the Green Line LRT project, please contact 311 or email greenline@calgary.ca.

About Green Line LRT

The Green Line is Calgary's next light rail transit (LRT) line. It is also the largest infrastructure investment in our city's history. It comes with \$4.9 billion in commitments from the Government of Canada, Government of Alberta, and City of Calgary.

Stage 1 will be built in 2 phases aligning with Council direction to build the Green Line in a stage-gate project approach. Phase 1 will build 18km of the LRT from Shepard to Eau Claire allowing for easier expansion both North and South. The current work in the Beltline and Downtown areas is part of the utility relocation program required to make way for Phase 1 construction.

Green Line is an important part of Calgary's economic recovery creating 20,000 jobs in Stage 1 alone and serves as a platform for long-term city building that will encourage redevelopment and investment opportunities in Calgary.

For more information about the Green Line project, please visit www.calgary.ca/greenline