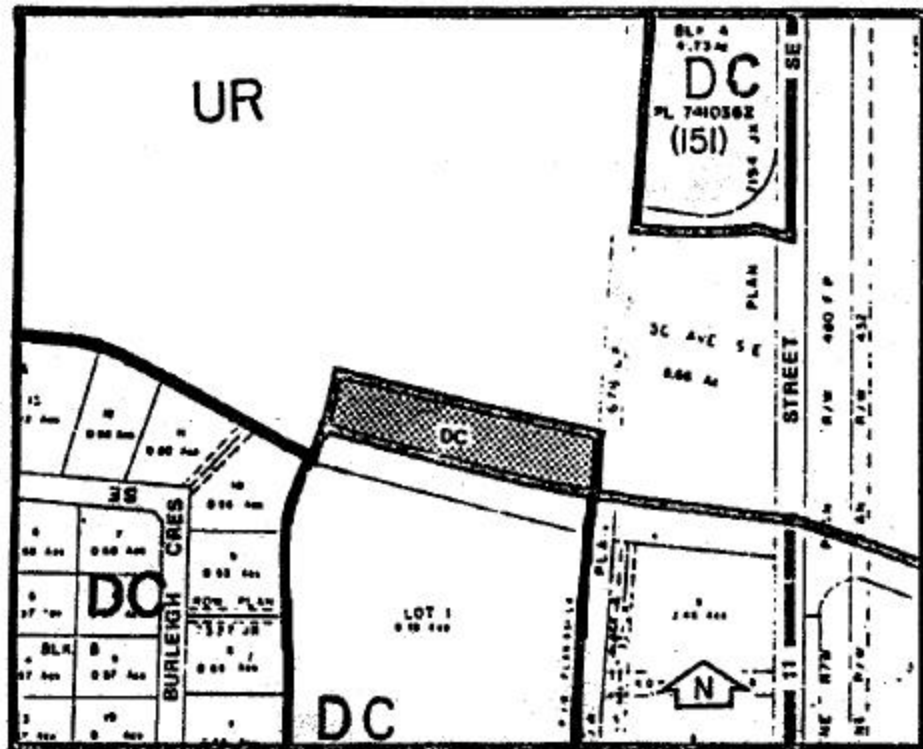


**Amendment No. 163-80**  
**Bylaw No. 18Z81**  
Council Approval: 19 January 1981

**SCHEDULE B**



LAND USE GUIDELINES

To DC for industrial development.

DEVELOPMENT GUIDELINES

1. That the M-2 S.D.A. category act as a land use and site specification guideline for that area presently zoned M-2 S.D.A.
2. That the M-2 category act as land use and site specification guideline for the area presently zoned M-2 General Light Industrial District.

3. That the following guidelines apply to any development proposals made:
  - a. that outdoor storage be screened in a satisfactory manner.
  - b. the provision of drained and surfaced on-site employee and visitor parking.
  - c. on-site landscaping to be planned in a manner which will enhance the street-scape and building setting.