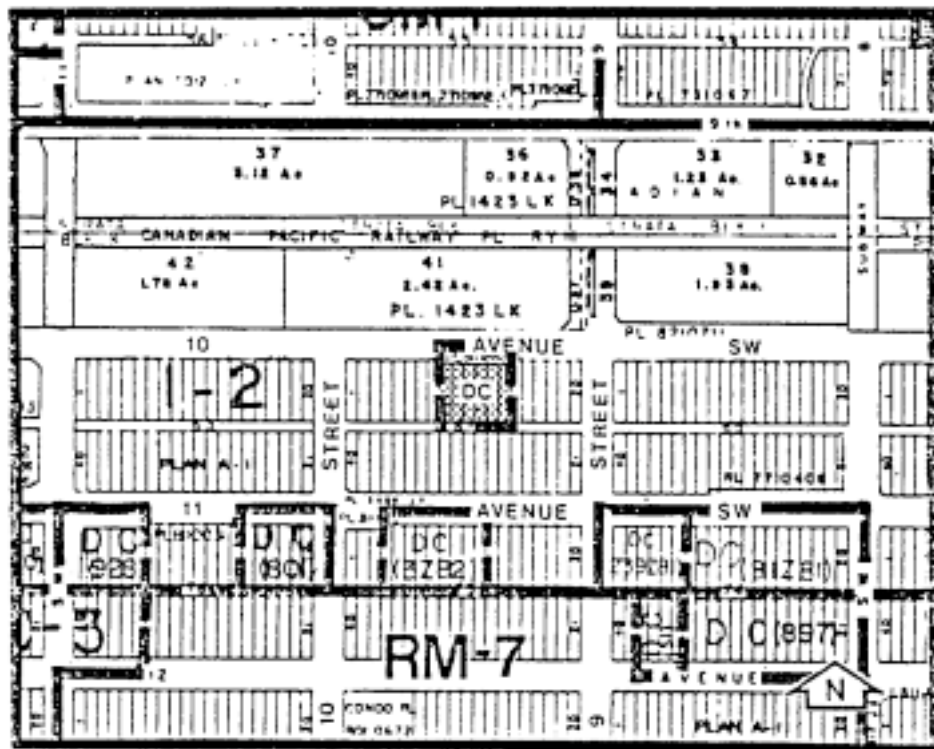


Amendment No. 82/099
Bylaw No. 165Z82
Council Approval: 20 September 1982

SCHEDULE B



1. Land Use

The land use shall be office building within ancillary retail uses only.

2. Development Guidelines

The General Rules for Commercial Districts contained in Section 33 of By-law 2P80 and the Permitted and Discretionary Use Rules of the CM-2 (Central Business District) shall apply unless otherwise noted below.

(a) Density

Maximum density shall be in the order of 3.93:1.

(b) Height

Maximum building height shall be 9 storeys not exceeding 22.6 metres (74 ft. ±) at any eaveline (not including mechanical penthouse).

(c) Parking

A total of 90 off-street parking stalls shall be provided.

(d) Development Plans

Approval of this application does not constitute approval of a development permit. Comprehensive plans, including building design, site layout, exterior finishes and colour, landscaping, parking and accesses shall subsequently be submitted to the Approving Authorities as part of a development permit application.