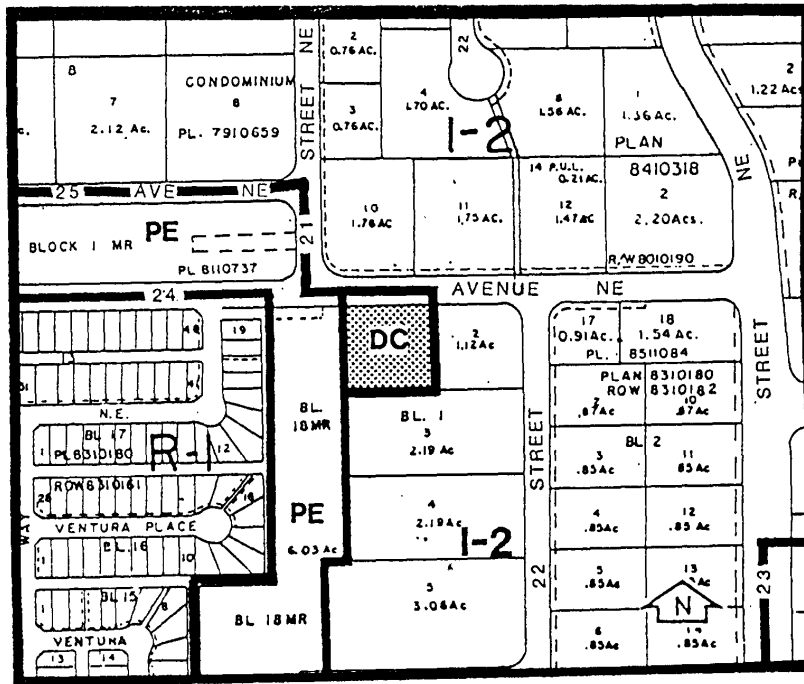


Amendment No. 88/10
Bylaw No. 39Z88
Council Approval: 16 May 1988

SCHEDULE B



1. Land Use

The permitted and discretionary uses of the I-2 General Light Industrial District shall be permitted and discretionary uses respectively with the additional use of a Hindu Temple and Cultural centre.

2. Development Guidelines

The General Rules for Industrial Districts contained in Section 43 of By-law 2P80 and the Permitted and Discretionary Use Rules of the I-2 (General Light Industrial District) shall apply unless otherwise noted below.

a. Development Plans

Approval of this application does not constitute approval of a development permit. Comprehensive plans including site layout, building design, exterior finishes and

colour, landscaping and parking shall subsequently be submitted to the Approving Authority as part of a development permit application.