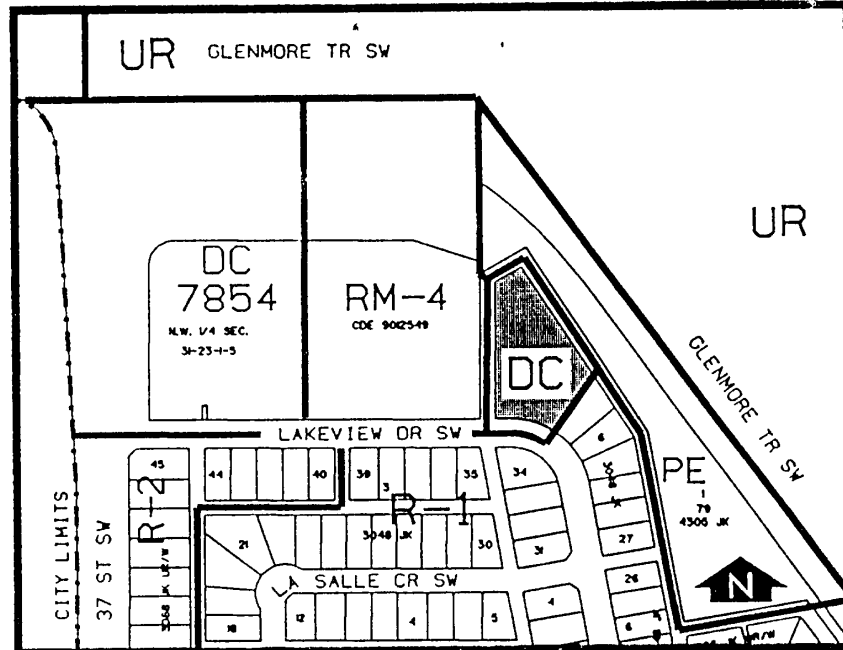


Amendment No. 94/046
Bylaw No. 80Z94
Council Approval: 19 September 1994

SCHEDULE B



1. Land Use

The land use shall be for a church and ancillary uses, and a private school only.

2. Development Guidelines

The General Rules for Residential Districts contained in Section 20 of By-law 2P80 and the Permitted and Discretionary Use Rules of the R-1 District shall apply unless otherwise noted below.

a) Private School

The maximum enrolment for the private school shall be 35.

b) Development Plans

Approval of this application does not constitute approval of a development permit. Comprehensive plans shall be submitted to the Approving Authority as part of a development permit application.