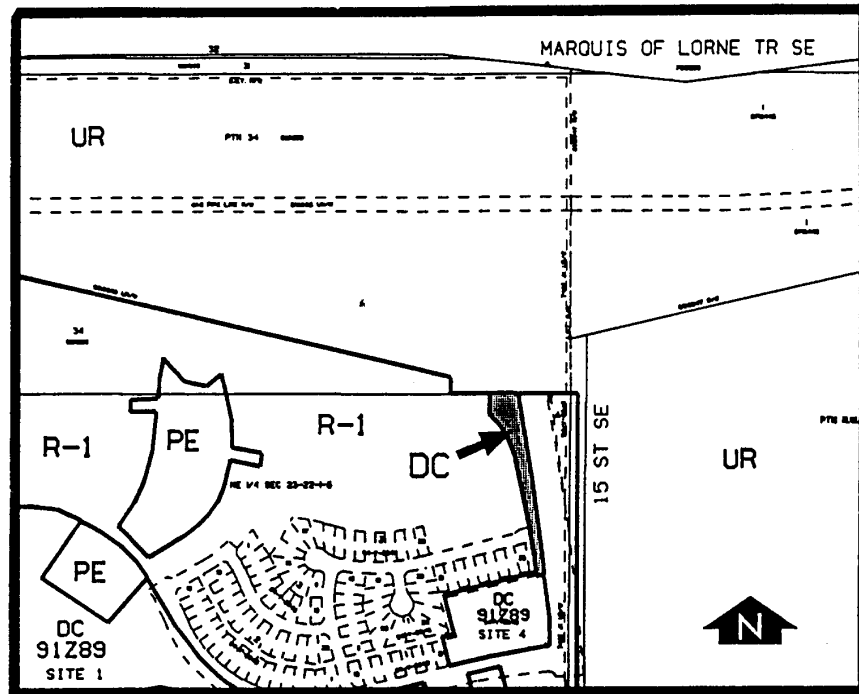


Amendment No. 94/038
Bylaw No. 92Z94
Council Approval: 14 November 1994

SCHEDULE B



1. Land Use (0.256 ha.±; 0.63 ac.±)

The land shall be used for a privately owned and maintained ornamental entrance park and associated community signage only.

2. Development Guidelines

- a) Development Approval

The ornamental entrance park and associated community identification signage shall be developed to the satisfaction of the Approving Authority in conjunction with the Director of Parks/Recreation.