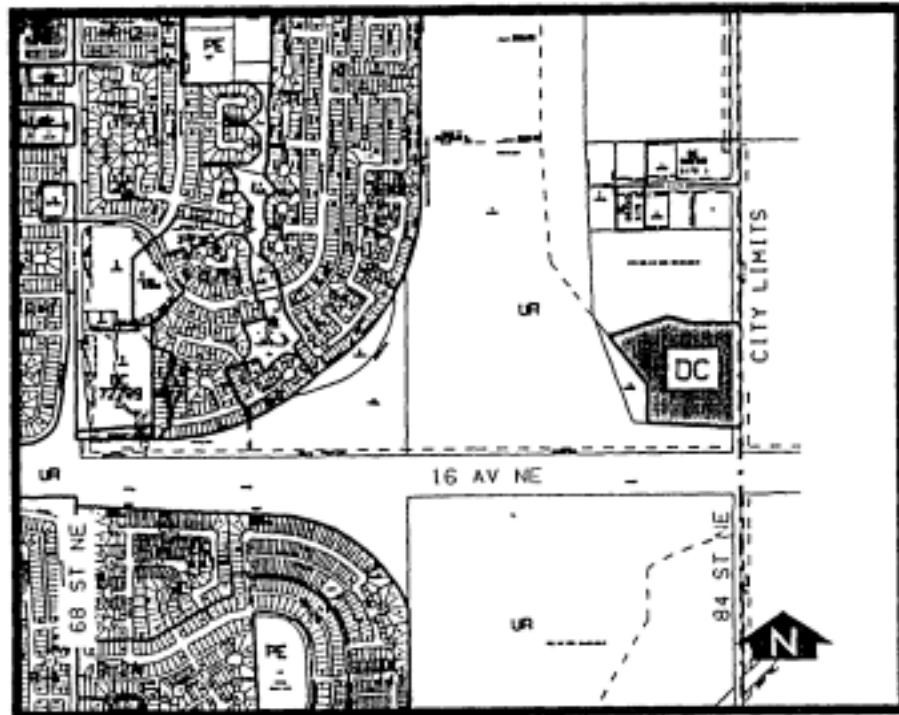


**Amendment No. 94/049**  
**Bylaw No. 94Z94**  
**Council Approval: 14 November 1994**

**SCHEDULE B**



1. Land Use

The land use shall be for a golf driving range and ancillary uses.

2. Development Guidelines

- a) The General Rules for Special District contained in Section 48 of By-law 2P80 and the Permitted and Discretionary Use Rules of the UR District shall apply unless otherwise noted below.
- b) Approval of this application does not constitute approval of a development permit. A development permit application shall be submitted to the Approving Authority.
- c) Lot Area  
The minimum lot area shall be 6.07 hectares.

d) Golf Driving Range

The golf driving range shall be developed and landscaped with a wheatland heritage theme to the satisfaction of the Approving Authority.

e) Golf Ball Barrier Netting

Golf ball barrier netting shall be mounted on neutral coloured poles and dismountable in the off-season.

f) Parking

The parking facilities for the golf driving range shall be paved, if required by the Development Officer, in the event that lands within 100 metres of the site are designated for residential purposes.