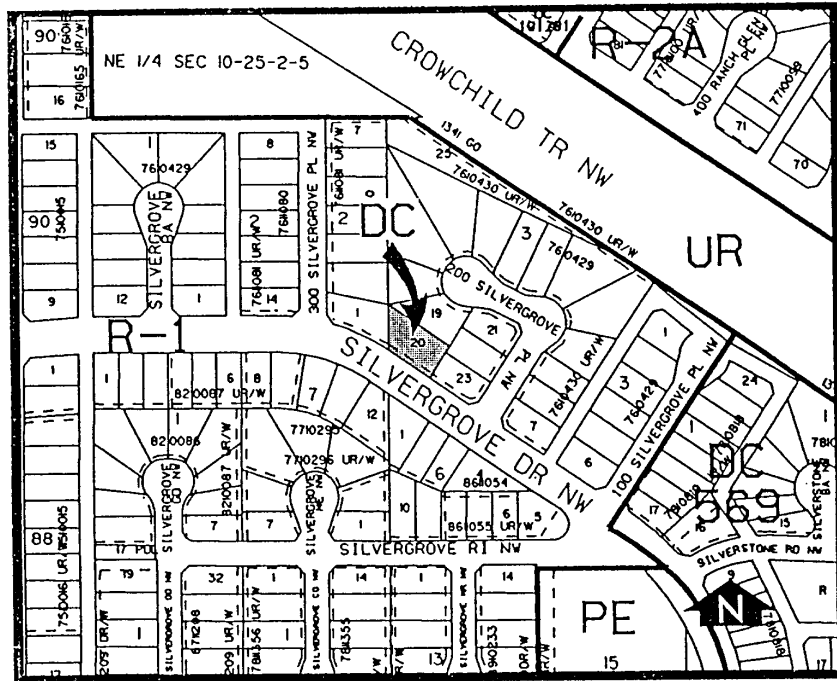


Amendment No. 95/052
Bylaw No. 99Z95
Council Approval: 13 November 1995

SCHEDULE B



1. Land Use

The Permitted and Discretionary Uses of the R-1 Residential Single-Detached District of Bylaw 2P80 shall be the permitted and discretionary uses respectively with the additional discretionary use of a child care facility ancillary to a dwelling unit only, subject to the following:

- i. Child care facility capacity
 - Maximum of 12 children, for 2 sessions per day
- ii. Parking stalls on site
 - Maximum of 4 parking stalls with access from Silvergrove Drive only
- iii. Usage of buildings on site for child care facility
 - Maximum of 45 square metres on the lower floor in the single-detached dwelling
 - Maximum of 62 square metres on the upper floor over the garage

2. Development Guidelines

a. The General Rules for Residential Districts contained in Section 20 of Bylaw 2P80 and the Permitted and Discretionary Use Rules of the R-1 Residential Single-Detached District shall apply unless otherwise noted below:

i. Temporary Signs

- There shall be no temporary or portable signs on site.

b. Development Plans

Approval of this application does not constitute approval of a development permit. A development permit application shall be submitted to the Approving Authority.