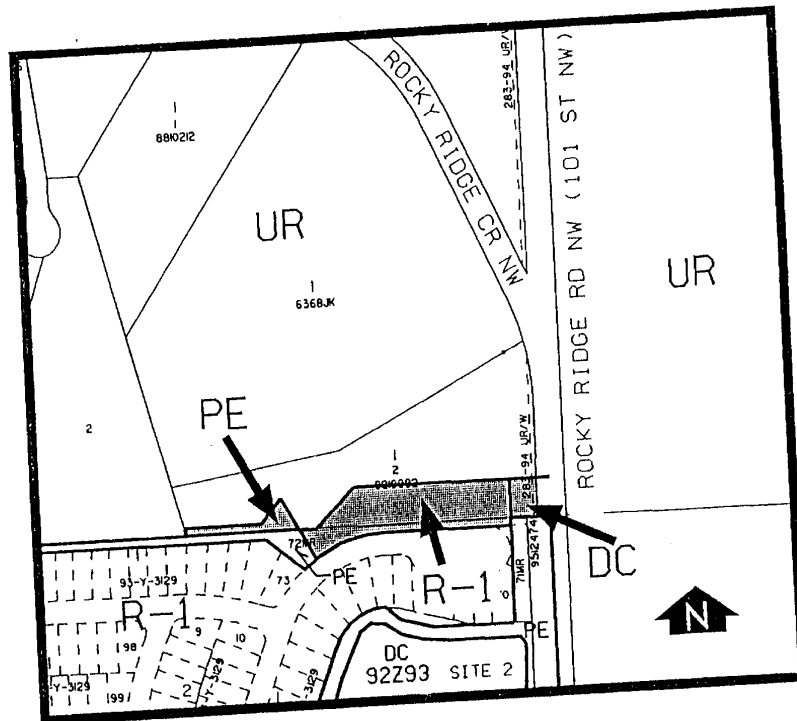


Amendment No. 95/045
Bylaw No. 3Z96
Council Approval: 15 January 1996

SCHEDULE B



1) Land Use

The land use shall be for non-commercial, privately-owned landscaped linear open space, pathway, and associated community and related signage only.

2) Development Guidelines

The General Rules for Special Districts contained in Section 48 of Bylaw 2P80, and the Permitted and Discretionary Use Rules of the A Agricultural and Open Space District contained in Section 49 shall apply unless otherwise noted below:

a) Development Plans

Approval of this application does not constitute approval of a development permit. Comprehensive plans, including building design, site layout, exterior finishes and colour, landscaping, parking and access shall subsequently be submitted to the Approving Authority as part of a development permit application.