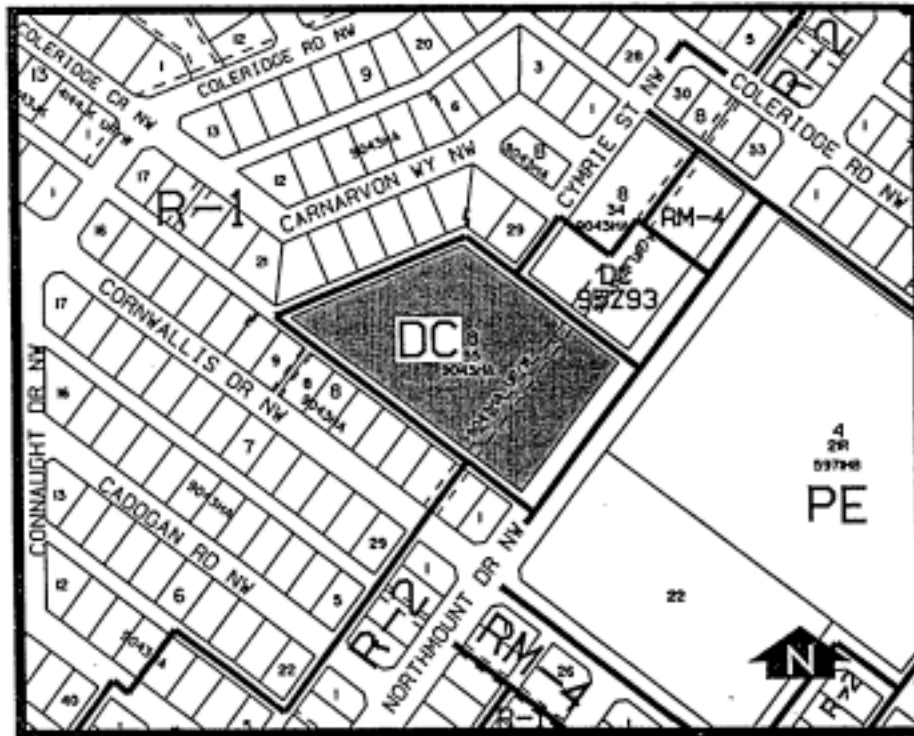


Amendment No. 96/089
Bylaw No. 4Z97
Council Approval: 22 January 1997

SCHEDULE B



1) Land Use

The land use shall be for a private school, church and associated community recreational activities.

2) Development Guidelines

The General Rules for Residential Districts contained in Section 20 of Bylaw 2P80 and the Permitted and Discretionary Use Rules of the RM-4 Residential Medium Density Multi-dwelling District shall apply unless otherwise noted below:

a) Capacity

The maximum number of students allowed in the private school is 225.

Amendment No. 4Z97 Bylaw No. 96/089

SCHEDULE B

CONTINUED

b) Parking

Parking provided shall not be less than the minimum requirements of Section 18 of Bylaw 2P80.

c) Development Plans

Approval of this application does not constitute approval of a development permit. Comprehensive plans shall be submitted to the Development Authority as part of a development permit application.