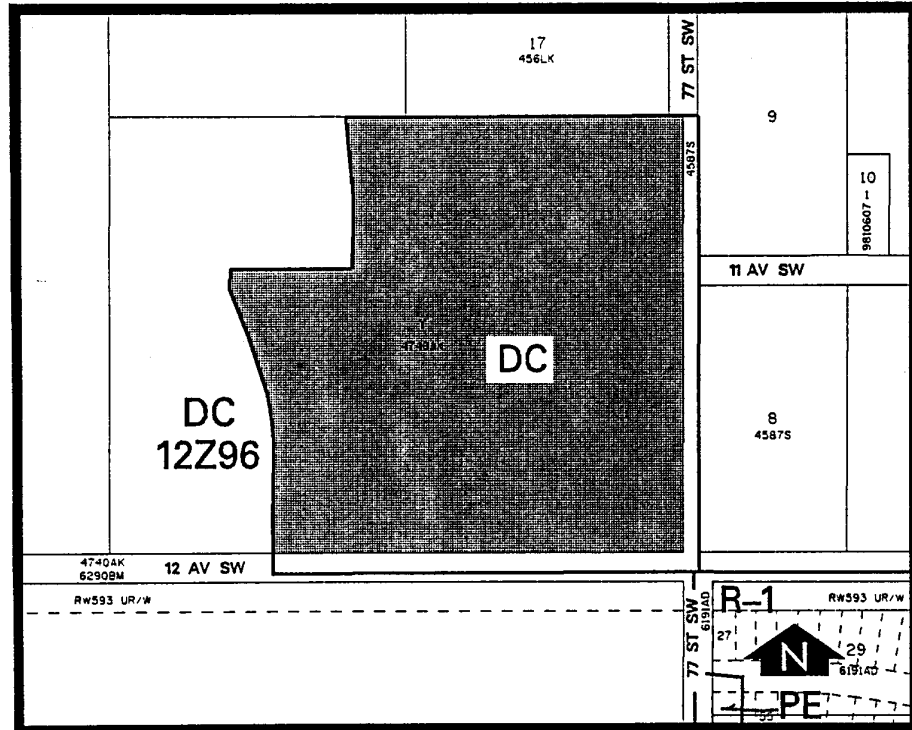


**Amendment No. 98/073**  
**Bylaw No. 107Z98**  
**Council Approval: 14 December 1998**

**SCHEDULE B**



**DC DIRECT CONTROL DISTRICT**

1. Land Use

The Permitted and Discretionary Uses of the R-1 Residential Single-Detached District shall be the permitted and discretionary uses respectively.

2. Development Guidelines

The General Rules for Residential Districts contained in Section 20 of Bylaw 2P80 and the Permitted and Discretionary Use Rules of the R-1 District shall apply unless otherwise noted below:

a. Lot Width

A minimum of 14 metres except that a minimum of 12 metres may be provided where a minimum of 14 metres averaged over all the lots within this DC district is maintained.

