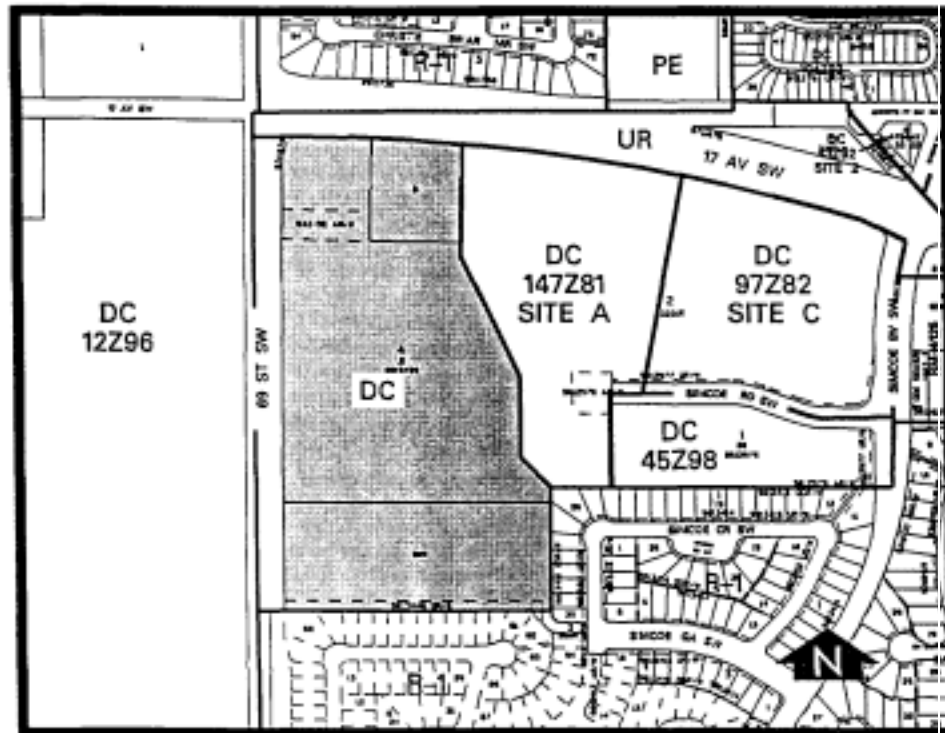


Amendment No. 99/012
Bylaw No. 39Z99
Council Approval: 05 May 1999

SCHEDULE B



(1) Land Use

(a) Permitted Uses

Except for utilities, essential public services, transit park'n'ride facilities and parks and recreation areas, the following uses shall be permitted only within an approved athletic and recreational facility:

- Utilities
- Essential Public Services
- Parks and Recreation Areas
- Transit Park'n'Ride Facilities
- Restaurants/Drinking Establishments
- Physiotherapy Clinic
- Child Care Facilities

(b) Discretionary Uses

Athletic and Recreational Facility (C.U.)
Park Maintenance and Service Facilities
Signs

Note: C.U. - Certainty of Land Use Only is afforded applications that meet the requirements of Section 11(2)(b).

2. Development Guidelines

The General Rules for Special Districts contained in Section 48 and Permitted and Discretionary Use Rules of the PE Public Park, School and Recreation District shall apply unless otherwise noted below:

(a) Parking

As part of a development permit application, a parking study shall be submitted to the satisfaction of the Development Authority identifying the number of parking spaces required on the site.

(b) Restaurants/Drinking Establishments

The maximum net floor area for restaurants/drinking establishments on the site shall be 483 square metres.

(c) Development Plans

Approval of this application does not constitute approval of a development permit. Comprehensive plans shall subsequently be submitted to the satisfaction of the Development Authority as part of a development permit application.