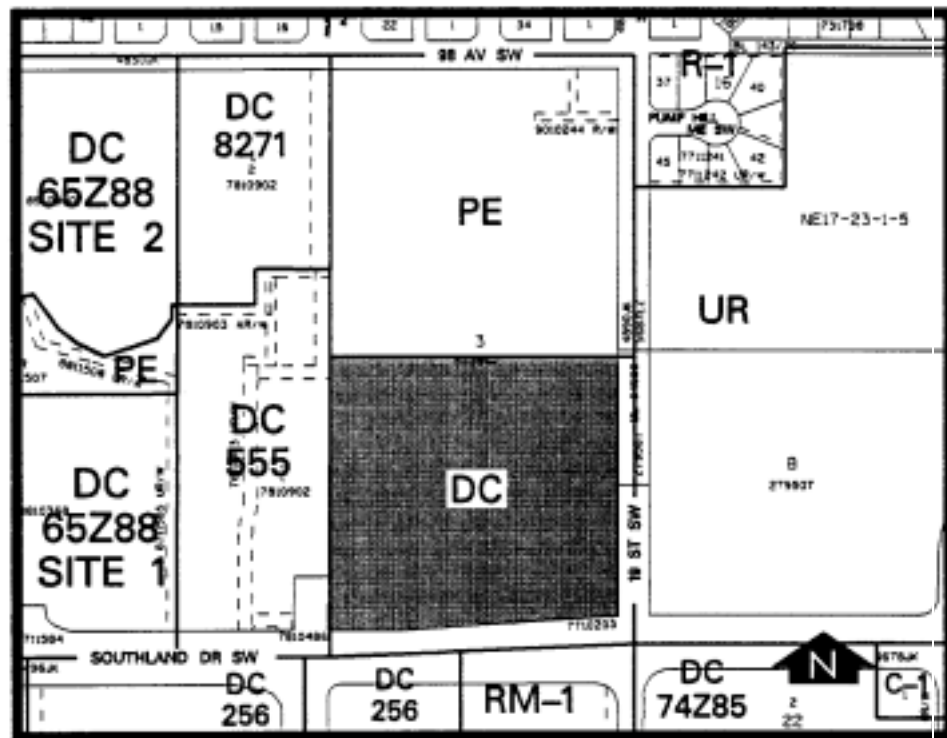


**Amendment No. 99/044**  
**Bylaw No. 85Z99**  
**Council Approval: 28 July 1999**

**SCHEDULE B**



1. Land Use

The Permitted and Discretionary Uses of the PE Public Park, School and Recreation District shall be the Permitted and Discretionary Uses respectively with the additional Discretionary Uses of a medical (physiotherapy) clinic and retail stores.

2. Development Guidelines

The General Rules for Special Districts contained in Section 48 of Bylaw 2P80 and the Permitted and Discretionary Use Rules of PE Public Park, School and Recreation District shall apply unless otherwise noted below:

a. Floor Areas

- i. The maximum combined area of a medical (physiotherapy) clinic and retail stores shall be 1,000 m<sup>2</sup>.

- ii. The maximum area for any medical (physiotherapy) clinic shall be 550 m<sup>2</sup>.
- iii. The maximum total area for all retail stores shall be 450 m<sup>2</sup> with no individual retail store being greater than 150 m<sup>2</sup>.

b. Retail Stores

Retail stores must be directly related to the primary athletic and recreational uses on the site.

c. Development Plans

Approval of this application does not constitute approval of a development permit. A Development Permit application including floor plans shall subsequently be submitted to the Development Authority.