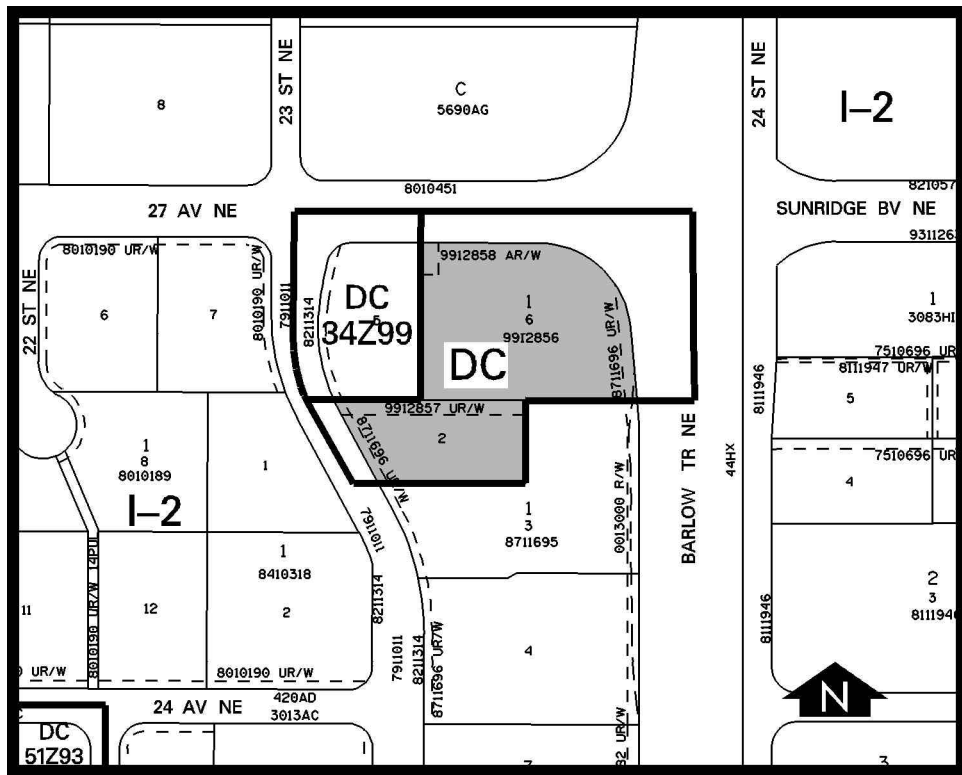


**Amendment # 2001/021**  
**Bylaw # 19Z2001**  
**Council Approval: 2001 April 23**

**SCHEDULE B**



**DC DIRECT CONTROL DISTRICT**

1. Land Use

The Permitted and Discretionary Uses of the I-2 General Light Industrial District of Bylaw 2P80 shall be the Permitted and Discretionary Uses respectively.

2. Development Guidelines

The General Rules for Industrial Districts contained in Section 43 of Bylaw 2P80 and the Permitted and Discretionary Use Rules of the I-2 General Light Industrial District shall apply unless otherwise noted below:

- (a) Section 45(5)(e)(i) of Bylaw 2P80 shall not apply.
- (b) No more than two (2) Restaurant/Drinking Establishments and Restaurant-Food Service Only, in total, shall be allowed on the site (with the discretionary use of outdoor cafés).
- (c) No direct vehicular access/egress shall be permitted to or from Barlow Trail. Access to 27 Avenue N.E. is restricted to right turns in and out only.
- (d) Parking  
See Section 18. The Approving Authority shall not grant any parking relaxations.