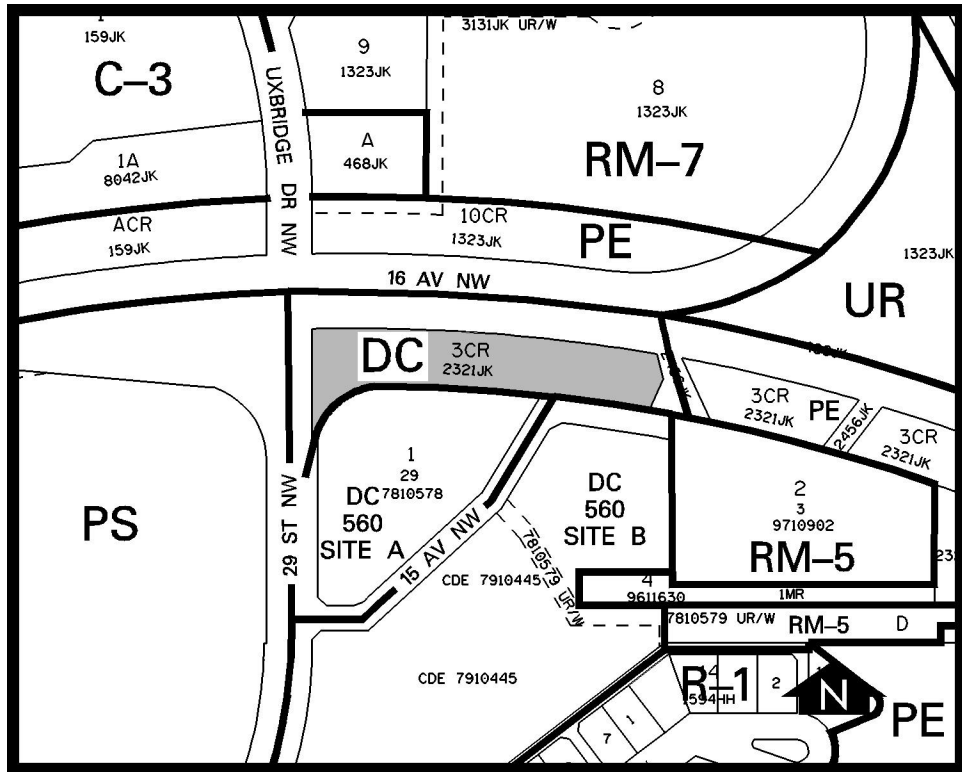


**Amendment # 2001/042**  
**Bylaw # 95Z2001**  
**Council Approval: 2001 October 11**

**SCHEDULE B**



**DC DIRECT CONTROL DISTRICT**

1. Land Use

The Permitted and Discretionary Uses of the PE Public Park, School and Recreation District of Bylaw 2P80 shall be the Permitted and Discretionary Uses respectively with the additional Discretionary Use of parking areas (temporary).

\

2. Development Guidelines

The General Rules for Special Districts contained in Section 48 of Bylaw 2P80 and the Permitted and Discretionary Use Rules of the PE Public Park, School and Recreation District shall apply unless otherwise noted below:

(a) Parking Areas

Any development permit for any parking area shall not be issued for a period exceeding five years.

(b) Landscaping

A comprehensive landscaping plan, including screening of 16 Avenue traffic in a manner similar to that provided by the present vegetation, satisfactory to the Development Authority, shall be submitted in conjunction with any development permit application for the site.