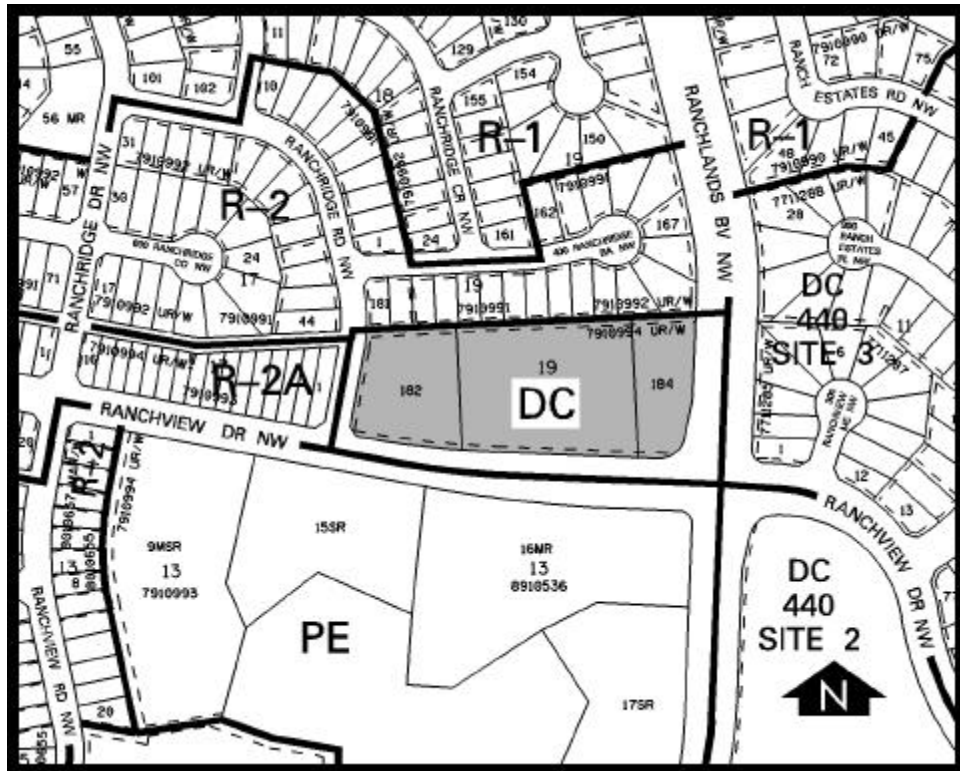


Amendment # LOC2001-0034
Bylaw # 37Z2002
Council Approval: May 13 2002

SCHEDULE B



DC DIRECT CONTROL DISTRICT

1. Land Use

The Permitted and Discretionary Uses of the C-1A Local Commercial District of Bylaw 2P80 shall be the Permitted and Discretionary Uses respectively.

2. Development Guidelines

The General Rules for Commercial Districts contained in Section 33 of Bylaw 2P80 and the Permitted and Discretionary Use Rules of the C-1A Local Commercial District shall apply unless otherwise noted below:

(a) Floor Area

Notwithstanding the provisions of Section 35(5)(b.2)(iii), no more than one restaurant/drinking establishment may have a maximum net floor area of 302 square metres, excluding kitchen area.