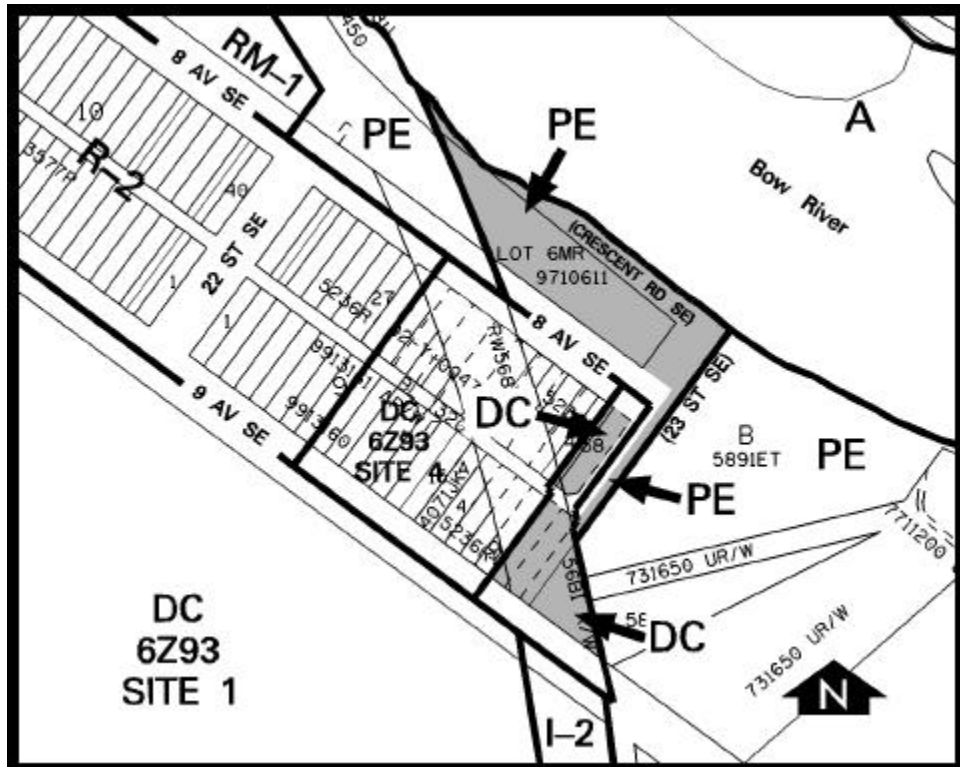


Amendment # LOC2002-0005
Bylaw # 70Z2002
Council Approval: 2002 October 07

SCHEDULE B



DC DIRECT CONTROL DISTRICT

1. Land Use

The Permitted and Discretionary Uses of the RM-2 Residential Low Density Multi-Dwelling District of Bylaw 2P80 shall be the Permitted and Discretionary Uses respectively.

2. Development Guidelines

The General Rules for Residential Districts contained in Section 20 of Bylaw 2P80 and the Permitted and Discretionary Use Rules of the RM-2 Residential Low Density Multi-Dwelling District shall apply unless otherwise noted below:

- (a) Density

A maximum of 44 units per hectare (18 units per acre).