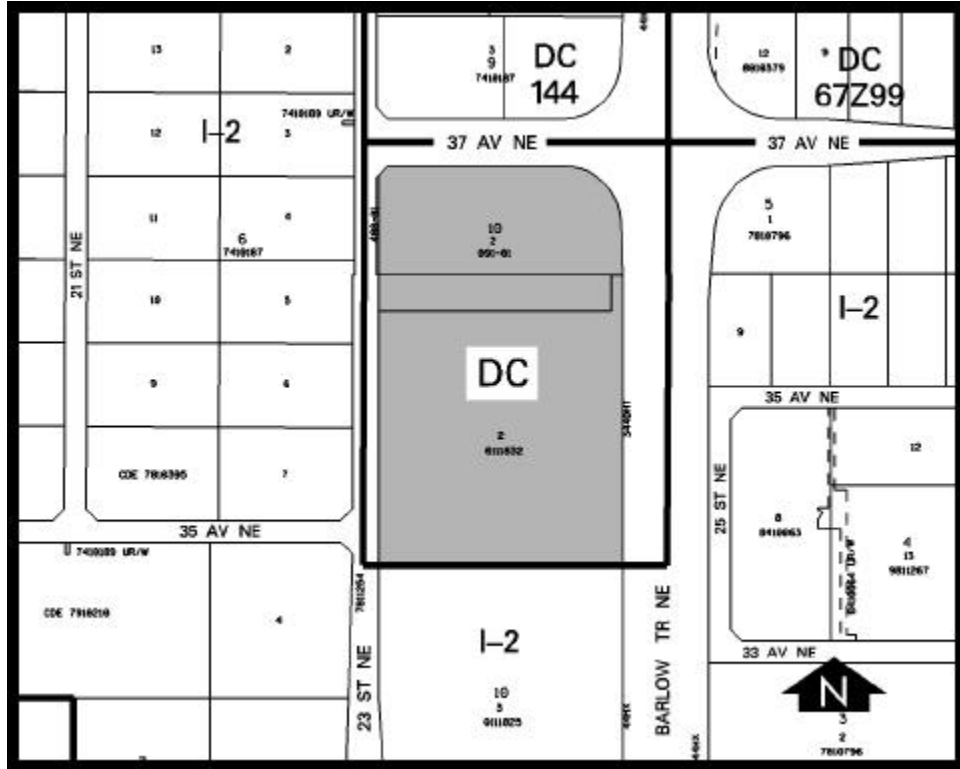


Amendment # LOC2002-0016
Bylaw # 89Z2002
Council Approval: 2002 September 16

SCHEDULE B



DC DIRECT CONTROL DISTRICT

1. Land Use

The Permitted and Discretionary Uses of the I-2 General Light Industrial District of Bylaw 2P80 shall be the Permitted and Discretionary Uses respectively, with the additional Discretionary Use of medical clinics.

2. Development Guidelines

The General Rules for Industrial Districts contained in Section 43 of Bylaw 2P80 and the Permitted and Discretionary Use Rules of the I-2 General Light Industrial District shall apply unless otherwise noted below:

(a) Medical Clinics

- (i) The total maximum gross floor area shall not exceed 9,900 square metres.
- (ii) Medical clinics shall only be located within a northerly 85 metres of the site within the three buildings that exist as of this date