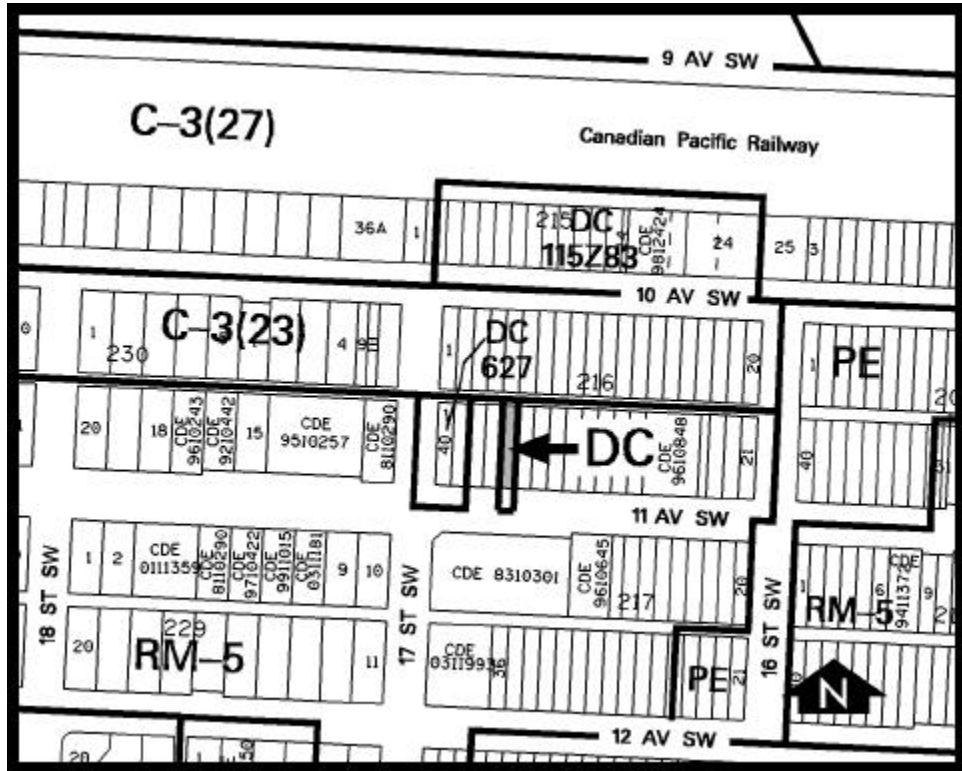


Amendment # LOC2003-0115 Bylaw # 22Z2004

Council Approval: 2004 April 19

SCHEDULE B



DC DIRECT CONTROL DISTRICT

1. Land Use

The Permitted and Discretionary Uses of the RM-5 Residential Medium Density Multi-Dwelling District of Bylaw 2P80 shall be the Permitted and Discretionary Uses respectively with the additional Discretionary Use of offices only within the building existing on the site as of the date of passage of this bylaw.

2. Development Guidelines

The General Rules for Residential Districts contained in Section 20 of Bylaw 2P80 and the Permitted and Discretionary Use Rules of the RM-5 Residential Medium Density Multi-Dwelling District shall apply unless otherwise noted below:

(a) Signage

Signage shall not be illuminated and the size, design and location must be compatible with the residential neighbourhood to the satisfaction of the Development Authority.

(b) Parking and Access

Parking layout and access for office use, having not less than three parking stalls, shall be provided in a manner satisfactory to the Development Authority.