

BYLAW NUMBER 66D2010

**BEING A BYLAW OF THE CITY OF CALGARY
TO AMEND THE LAND USE BYLAW 1P2007
(LAND USE AMENDMENT LOC2009-0095)

WHEREAS it is desirable to amend the Land Use Bylaw Number 1P2007 to change the land use designation of certain lands within the City of Calgary;

AND WHEREAS Council has held a public hearing as required by Section 692 of the Municipal Government Act, R.S.A. 2000, c.M-26 as amended;

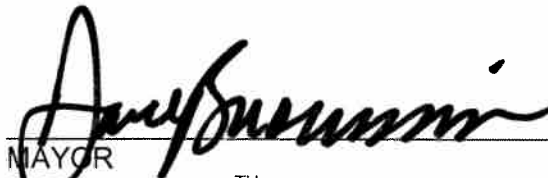
NOW, THEREFORE, THE COUNCIL OF THE CITY OF CALGARY ENACTS AS FOLLOWS:

1. The Land Use Bylaw, being Bylaw 1P2007 of the City of Calgary, is hereby amended by deleting that portion of the Land Use District Map shown as shaded on Schedule "A" to this Bylaw and substituting therefor that portion of the Land Use District Map shown as shaded on Schedule "B" to this Bylaw, including any land use designation, or specific land uses and development guidelines contained in the said Schedule "B".
2. This Bylaw comes into force on the date it is passed.

READ A FIRST TIME THIS 7TH DAY OF JUNE, 2010.

READ A SECOND TIME, AS AMENDED, THIS 7TH DAY OF JUNE, 2010.

READ A THIRD TIME, AS AMENDED, THIS 7TH DAY OF JUNE, 2010.



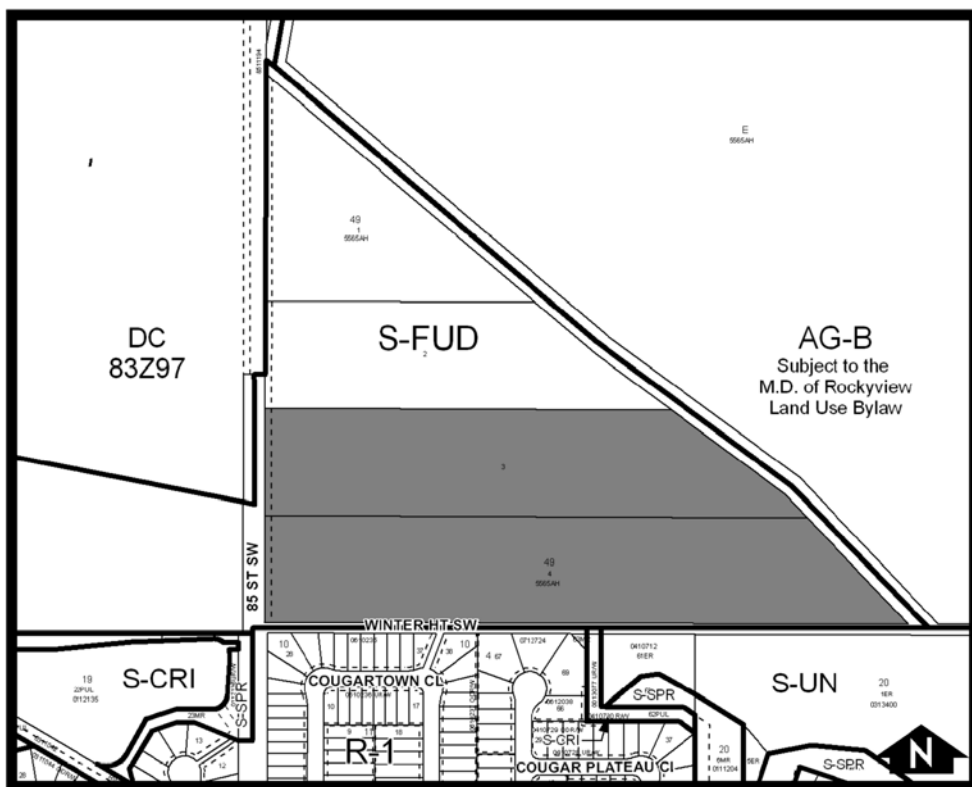
MAYOR
SIGNED THIS 17TH DAY OF JUNE, 2010.



ACTING CITY CLERK
SIGNED THIS 17TH DAY OF JUNE, 2010.

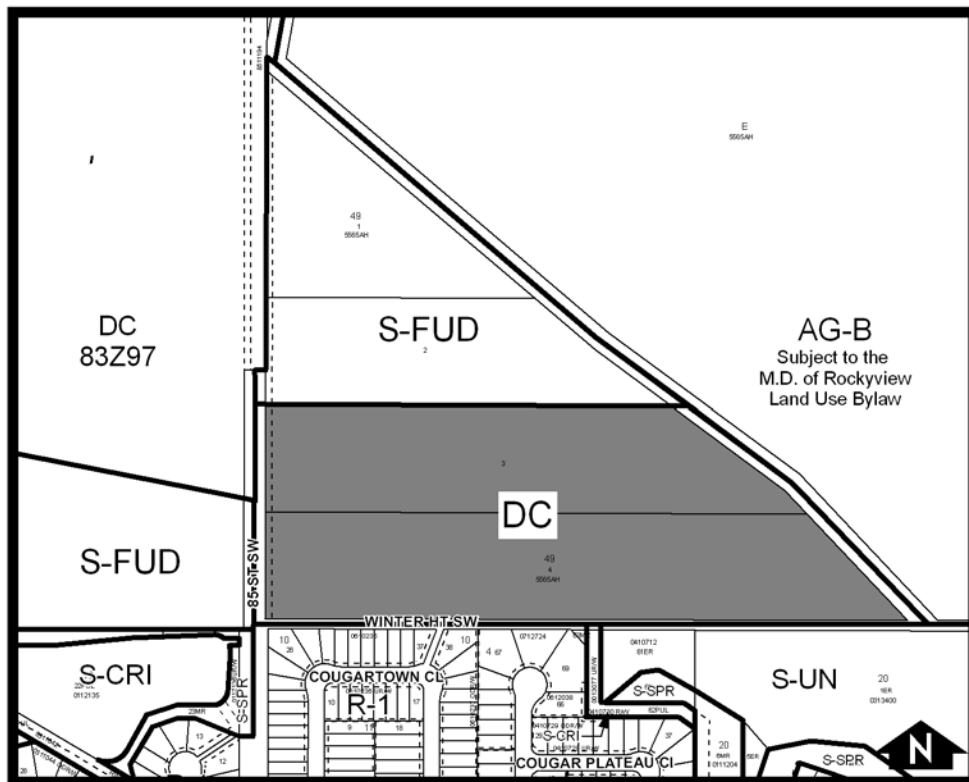
AMENDMENT LOC2009-0095
 BYLAW NUMBER 66D2010

SCHEDULE A



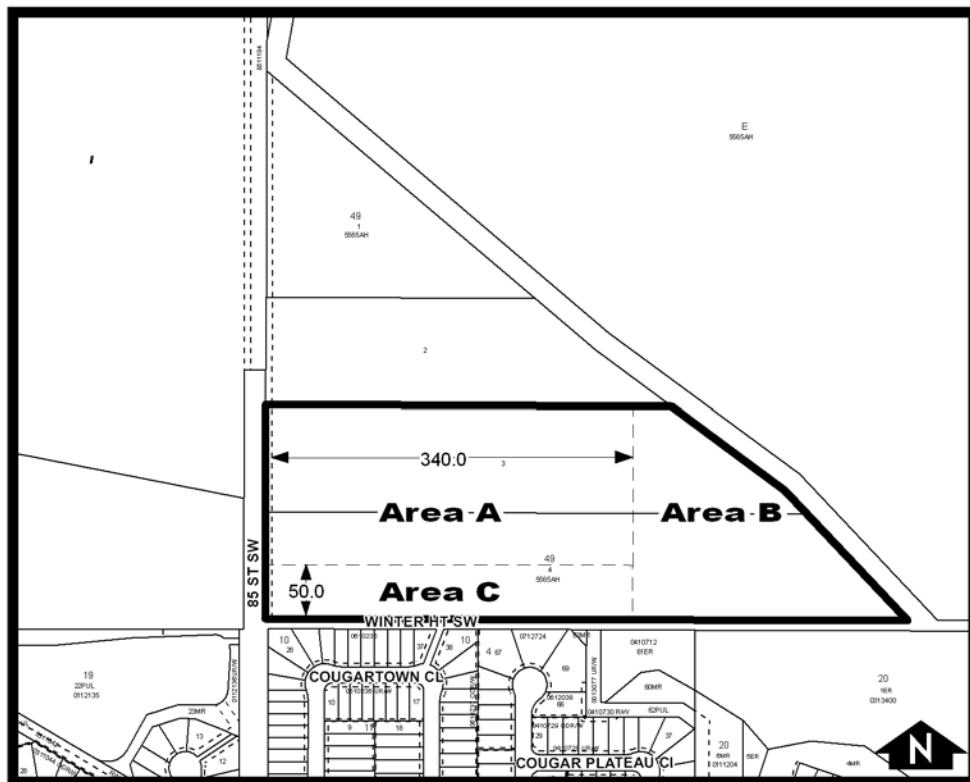
**AMENDMENT LOC2009-0095
BYLAW NUMBER 66D2010**

SCHEDULE B



AMENDMENT LOC2009-0095
BYLAW NUMBER 66D2010

SCHEDULE C



DC DIRECT CONTROL DISTRICT

Purpose

- 1 This Direct Control District is intended to:
 - (a) provide for large scale culture, worship, education, health and treatment facilities;
 - (b) be sensitive to the context of *adjacent* residential areas;
 - (c) maintain a minimum *parcel* size; and
 - (d) Protect a defined natural area.

**AMENDMENT LOC2009-0095
BYLAW NUMBER 66D2010**

Compliance with Bylaw 1P2007

- 2 Unless otherwise specified, the rules and provisions of Parts 1, 2, 3 and 4 of Bylaw 1P2007 apply to this Direct Control District.

Reference to Bylaw 1P2007

- 3 Within this Direct Control District, a reference to a section of Bylaw 1P2007 is deemed to be a reference to the section as amended from time to time.

Permitted Uses

- 4 The ***permitted uses*** of the Special Purpose – Community Institution (S-CI) District of Bylaw 1P2007 are the ***permitted uses*** in this Direct Control District.

Discretionary Uses

- 5 The ***discretionary uses*** of the Special Purpose – Community Institution (S-CI) District of Bylaw 1P2007 are the ***discretionary uses*** in this Direct Control District.

Bylaw 1P2007 District Rules

- 6 Unless otherwise specified, the rules of the Special Purpose – Community Institution (S-CI) District of Bylaw 1P2007 apply in this Direct Control District.

Parcel Area

- 7 The minimum area of a ***parcel*** is 9.75 hectares.

Development Area A

- 8 ***Buildings*** may only be located within “Area A” as shown in Schedule C to this Bylaw.

Development Area B

- 9 No ***development***, other than improvements that facilitate passive recreational uses or a pedestrian walkway system, is allowed within “Area B” as shown in Schedule C to this Bylaw.

Development Area C

- 10 No ***development***, other than driveways, internal roadways, improvements that facilitate passive recreational ***uses, motor vehicle parking stalls, landscaped areas***, or a pedestrian walkway system, is allowed within “Area C” as shown in Schedule C to this Bylaw.