

**BYLAW NUMBER 110D2014**

**BEING A BYLAW OF THE CITY OF CALGARY  
TO AMEND THE LAND USE BYLAW 1P2007  
(LAND USE AMENDMENT LOC2014-0032)**  
\*\*\*\*\*

**WHEREAS** it is desirable to amend the Land Use Bylaw Number 1P2007 to change the land use designation of certain lands within the City of Calgary;

**AND WHEREAS** Council has held a public hearing as required by Section 692 of the *Municipal Government Act*, R.S.A. 2000, c.M-26 as amended;

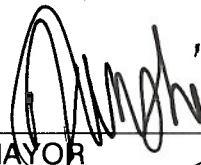
**NOW, THEREFORE, THE COUNCIL OF THE CITY OF CALGARY ENACTS AS FOLLOWS:**

1. The Land Use Bylaw, being Bylaw 1P2007 of the City of Calgary, is hereby amended by deleting that portion of the Land Use District Map shown as shaded on Schedule "A" to this Bylaw and substituting therefor that portion of the Land Use District Map shown as shaded on Schedule "B" to this Bylaw, including any land use designation, or specific land uses and development guidelines contained in the said Schedule "B".
2. This Bylaw comes into force on the date it is passed.

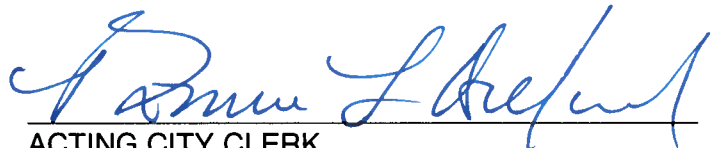
READ A FIRST TIME THIS 6<sup>TH</sup> DAY OF OCTOBER, 2014.

READ A SECOND TIME THIS 6<sup>TH</sup> DAY OF OCTOBER, 2014.

READ A THIRD TIME THIS 6<sup>TH</sup> DAY OF OCTOBER, 2014.

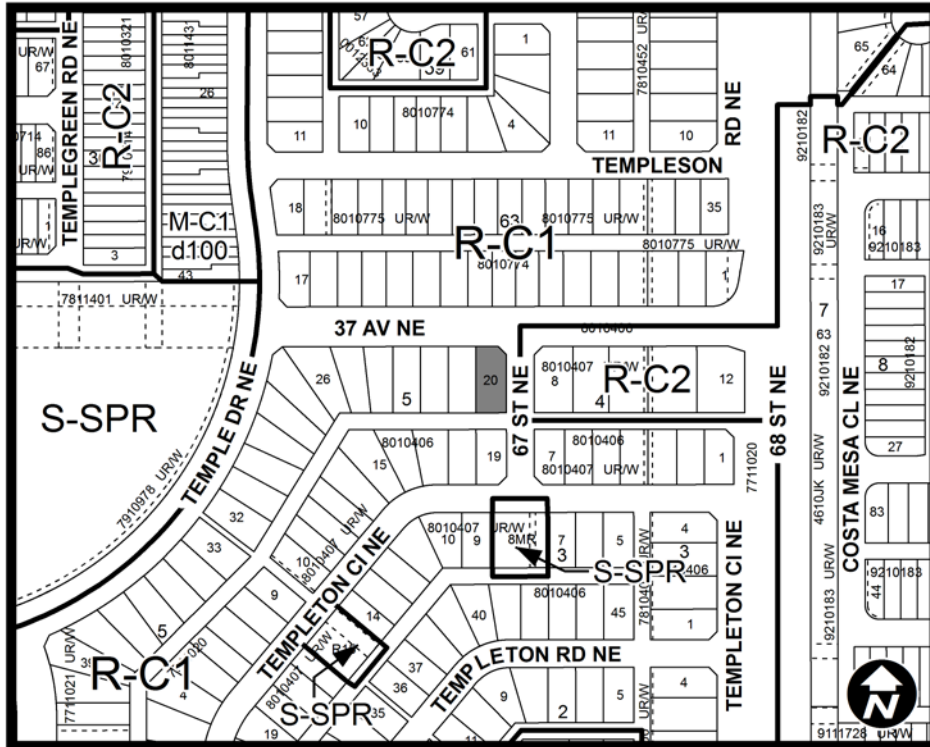


\_\_\_\_\_  
MAYOR  
SIGNED THIS 6<sup>TH</sup> DAY OF OCTOBER, 2014.

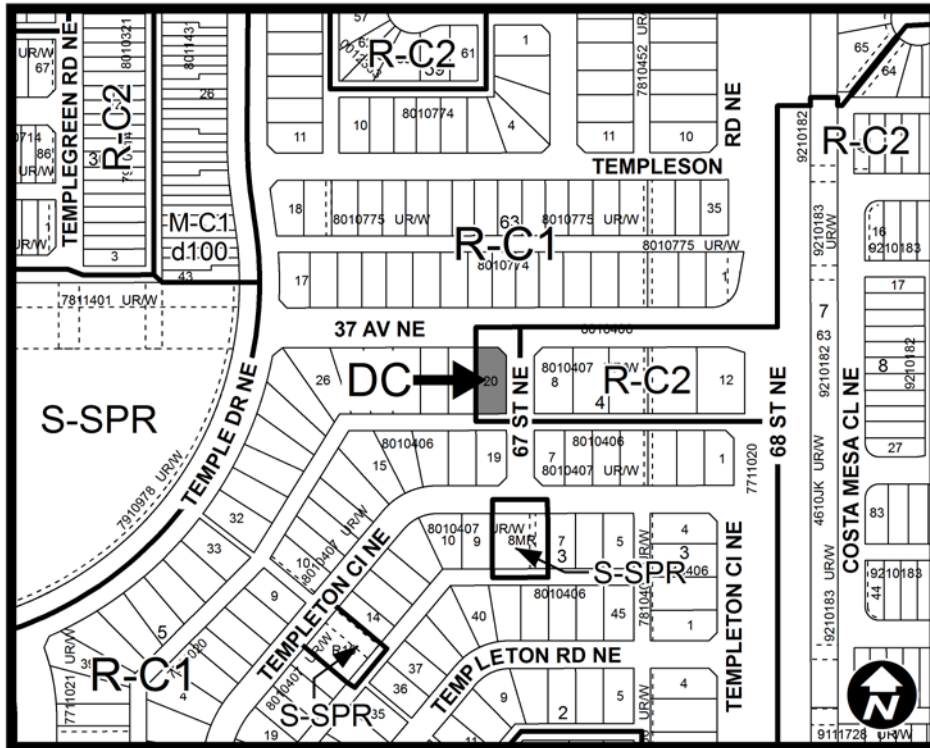


\_\_\_\_\_  
ACTING CITY CLERK  
SIGNED THIS 6<sup>TH</sup> DAY OF OCTOBER, 2014.

SCHEDULE A



**SCHEDULE B**



**DC DIRECT CONTROL DISTRICT**

**Purpose**

- 1 This Direct Control District is to allow for:
  - (a) the additional **use** of **Child Care Service** in a low density residential district.

**Compliance with Bylaw 1P2007**

- 2 Unless otherwise specified, the rules and provisions of Parts 1, 2, 3 and 4 of Bylaw 1P2007 apply to this Direct Control District.

**Reference to Bylaw 1P2007**

- 3 Within this Direct Control District, a reference to a section of Bylaw 1P2007 is deemed to be a reference to the section as amended from time to time.

**AMENDMENT LOC2014-0032  
BYLAW NUMBER 110D2014**

**Permitted Uses**

- 4** The ***permitted uses*** of the Residential – Contextual One Dwelling (R-C1) District of Bylaw 1P2007 are the ***permitted uses*** in this Direct Control District.

**Discretionary Uses**

- 5** The ***discretionary uses*** of the Residential – Contextual One Dwelling (R-C1) District of Bylaw 1P2007 are the ***discretionary uses*** in this Direct Control District with the addition of:

(a) **Child Care Service.**

**Bylaw 1P2007 District Rules**

- 6** Unless otherwise specified, the rules of the Residential – Contextual One Dwelling (R-C1) District of Bylaw 1P2007 apply in this Direct Control District.