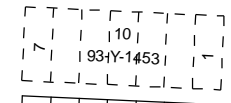
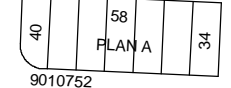



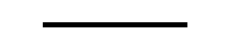



Land Use Districts

Legend

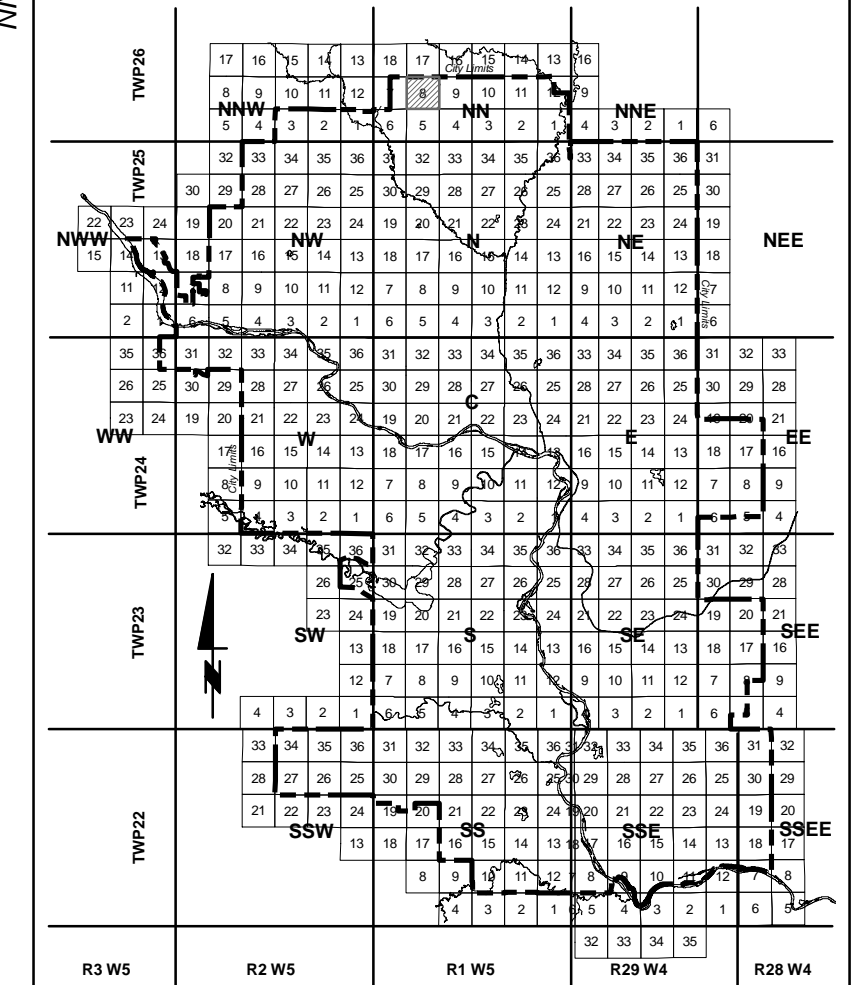
-  Tentative Plan
-  Legal Base
-  Street Names
-  Light Rail Transit
-  City Limits
-  Land Use Lines
-  Land Use Designation

Notes:

This map forms part of the Calgary Land Use By-law 2P80 as indicated in Section 6 of the by-law. Land Use Districts are subject to amendment by by-law of City Council and the maps are updated as soon as possible following Council's decision.

Land Use Update: 2007 December 27

Key Map



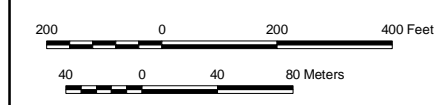
SECTION 8NN T26.R1.W5

Source: Planning, Development & Assessment

The City of Calgary provides this information in good faith but it provides no warranty, nor accepts any liability arising from any incorrect, incomplete or misleading information or its improper use. This information may be updated on a daily basis as changes occur.

© The City of Calgary, 2008

All rights reserved. No part of this material may be reproduced or utilized in any form or by any means without the written consent of The City of Calgary.



F
(M.D. OF ROCKY VIEW
LAND USE BYLAW
C-4841-97)

RF
(M.D. OF ROCKY VIEW
LAND USE BYLAW
C-4841-97)

RF
(M.D. OF ROCKY VIEW
LAND USE BYLAW
C-4841-97)

RF
(M.D. OF ROCKY VIEW
LAND USE BYLAW
C-4841-97)

RF-2
(M.D. OF ROCKY VIEW
LAND USE BYLAW
C-4841-97)

F
(M.D. OF ROCKY VIEW
LAND USE BYLAW
C-4841-97)

PANORAMA RD NW (24.5 ST NW)

PANORAMA RD NW (24.5 ST NW)

(168 AV NW ALIGNMENT)

(168 AV NW ALIGNMENT)

(160 AV NW ALIGNMENT)

(160 AV NW ALIGNMENT)

14 ST NW

NE08-26-1-5

1
9312345

1
2
0612100

0612101 MARK