

Urban Structure  
(By Land Use Typology)

- Activity Centres**

  - Centre City
  - Major Activity Centre
  - Community Activity Centre
- Main Streets**

  - Urban Main Street
  - Neighbourhood Main Street
- Residential**

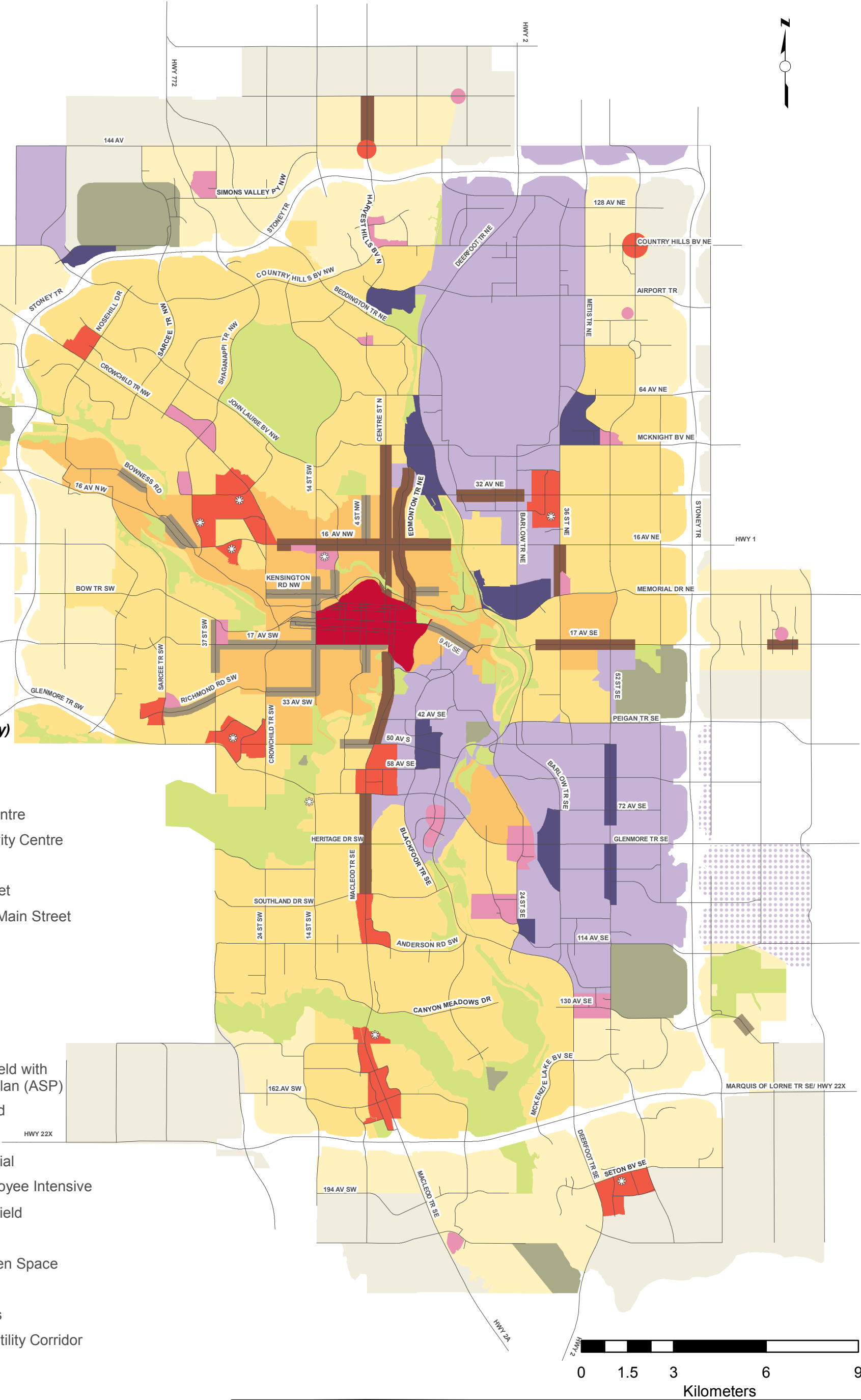
**Developed**

  - Inner City
  - Established

**Developing**

  - Planned Greenfield with Area Structure Plan (ASP)
  - Future Greenfield
- Industrial**

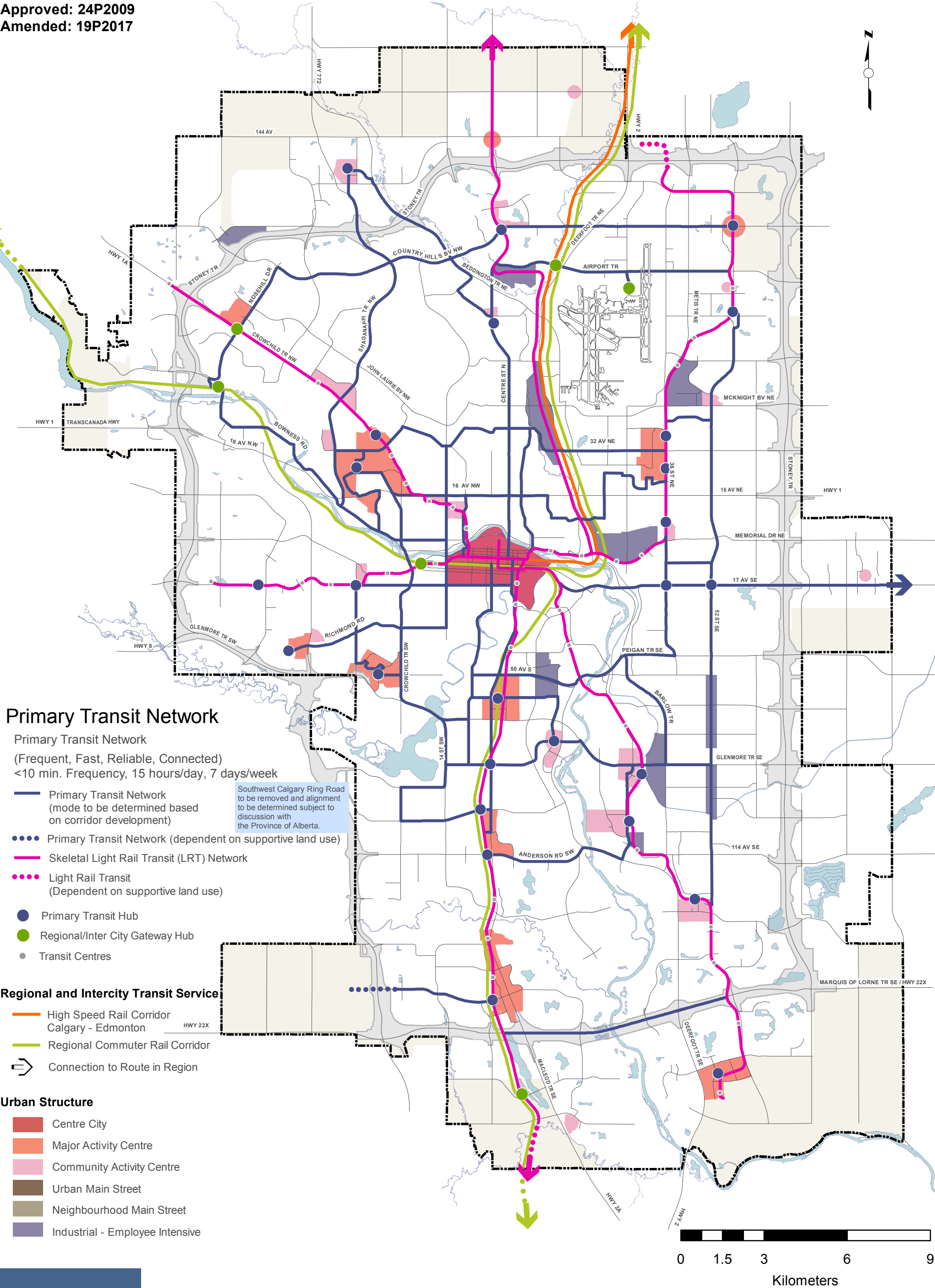
  - Standard Industrial
  - Industrial - Employee Intensive
  - Industrial Greenfield
- Major Public Open Space
  - Public Utility
  - Major Institutions
  - Transportation/Utility Corridor
  - City Limits



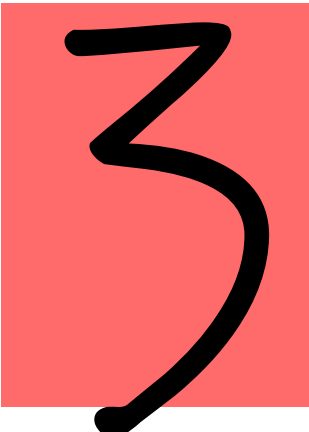
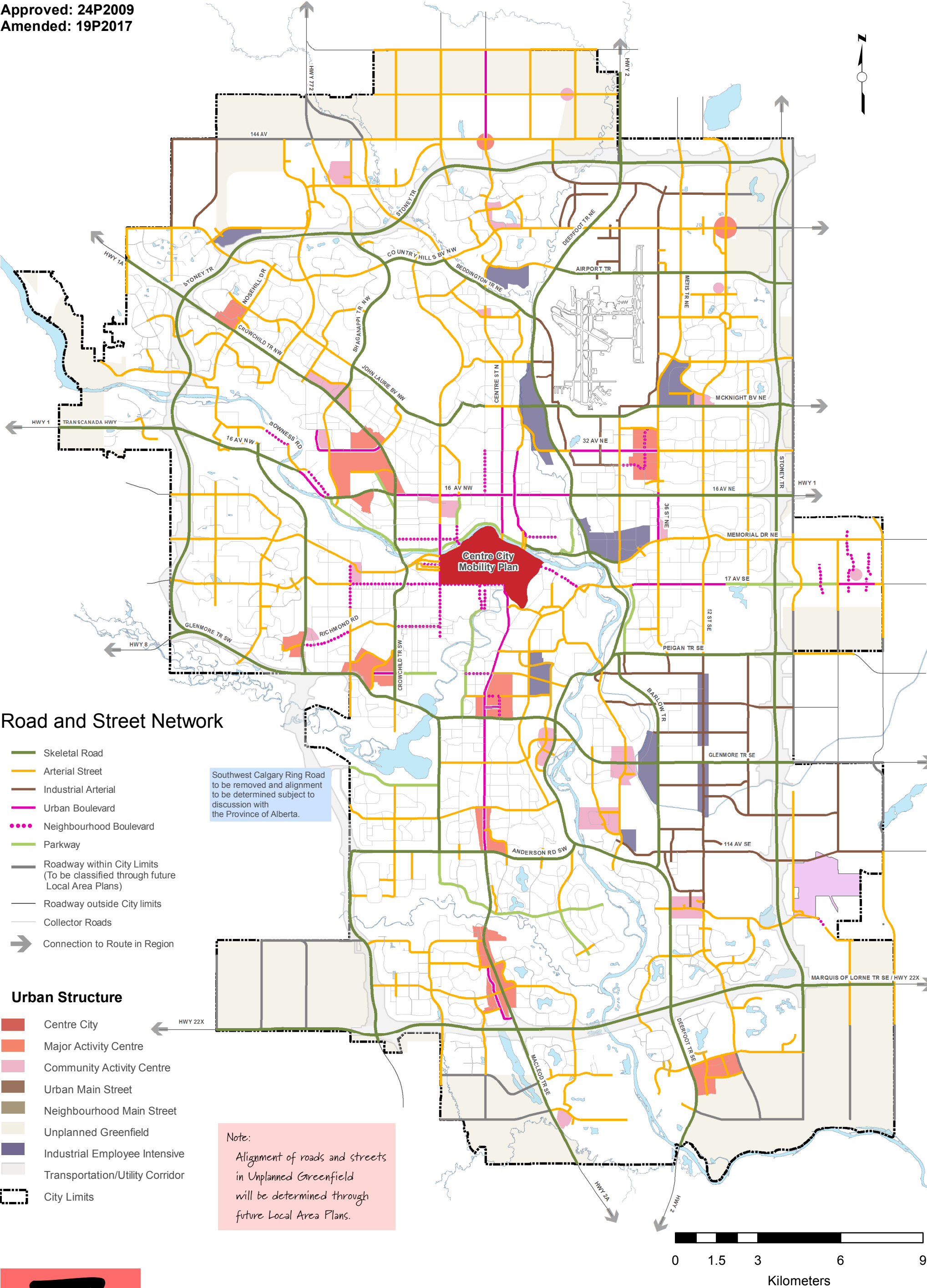
This map represents a conceptual land use structure and transportation networks for the city as a whole. No representation is made herein that a particular site use or City investment, as represented on this map, will be made. Site specific assessments, including environmental contamination, as well as the future financial capacities of the City of Calgary must be considered before any land use or City investment decisions are made.



# Urban Structure

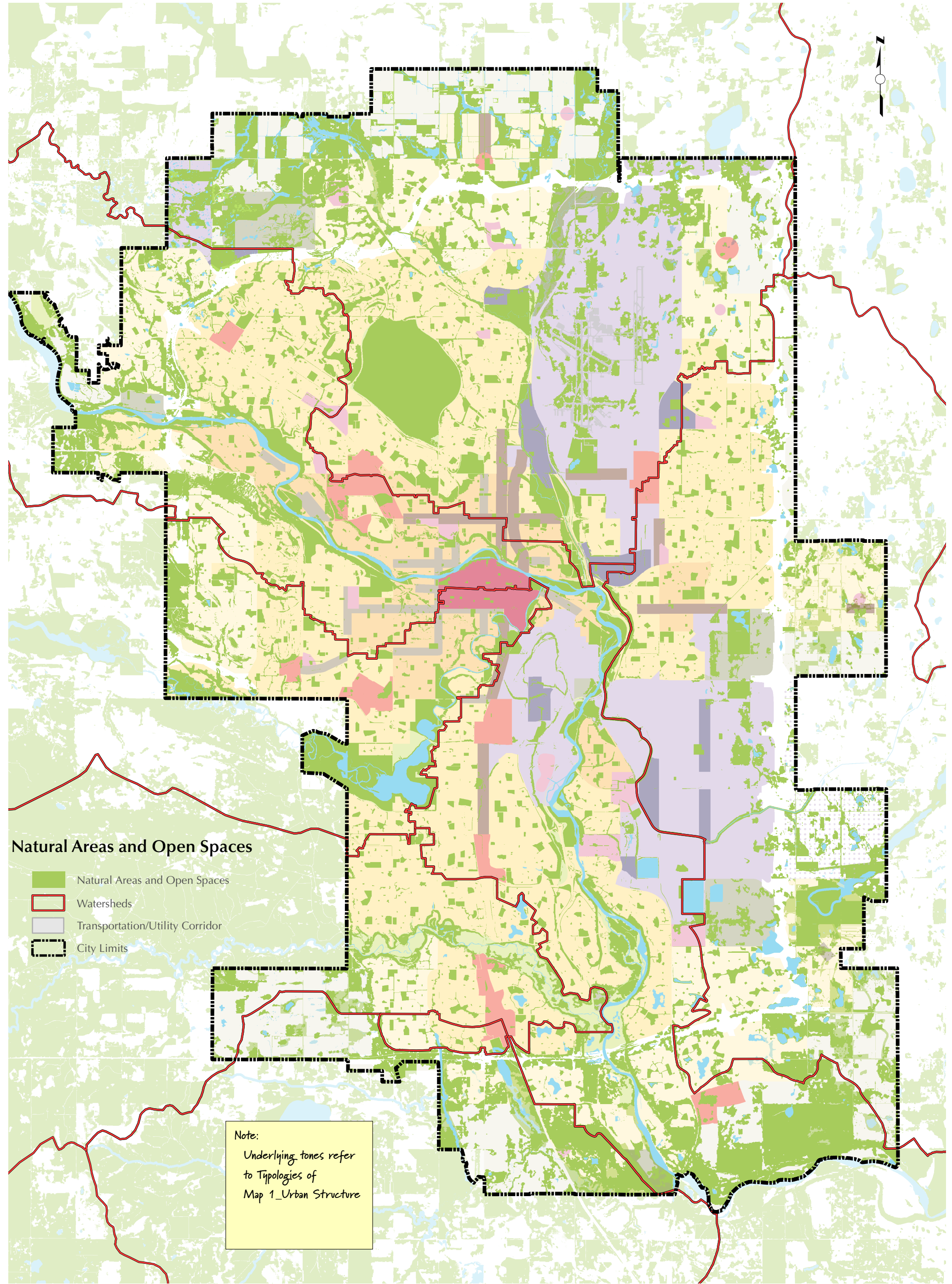


This map represents a conceptual land use structure and transportation networks for the city as a whole. No representation is made herein that a particular site use or City investment, as represented on this map, will be made. Site specific assessments, including environmental contamination, as well as the future financial capacities of the City of Calgary must be considered before any land use or City investment decisions are made.



# Road and Street Network

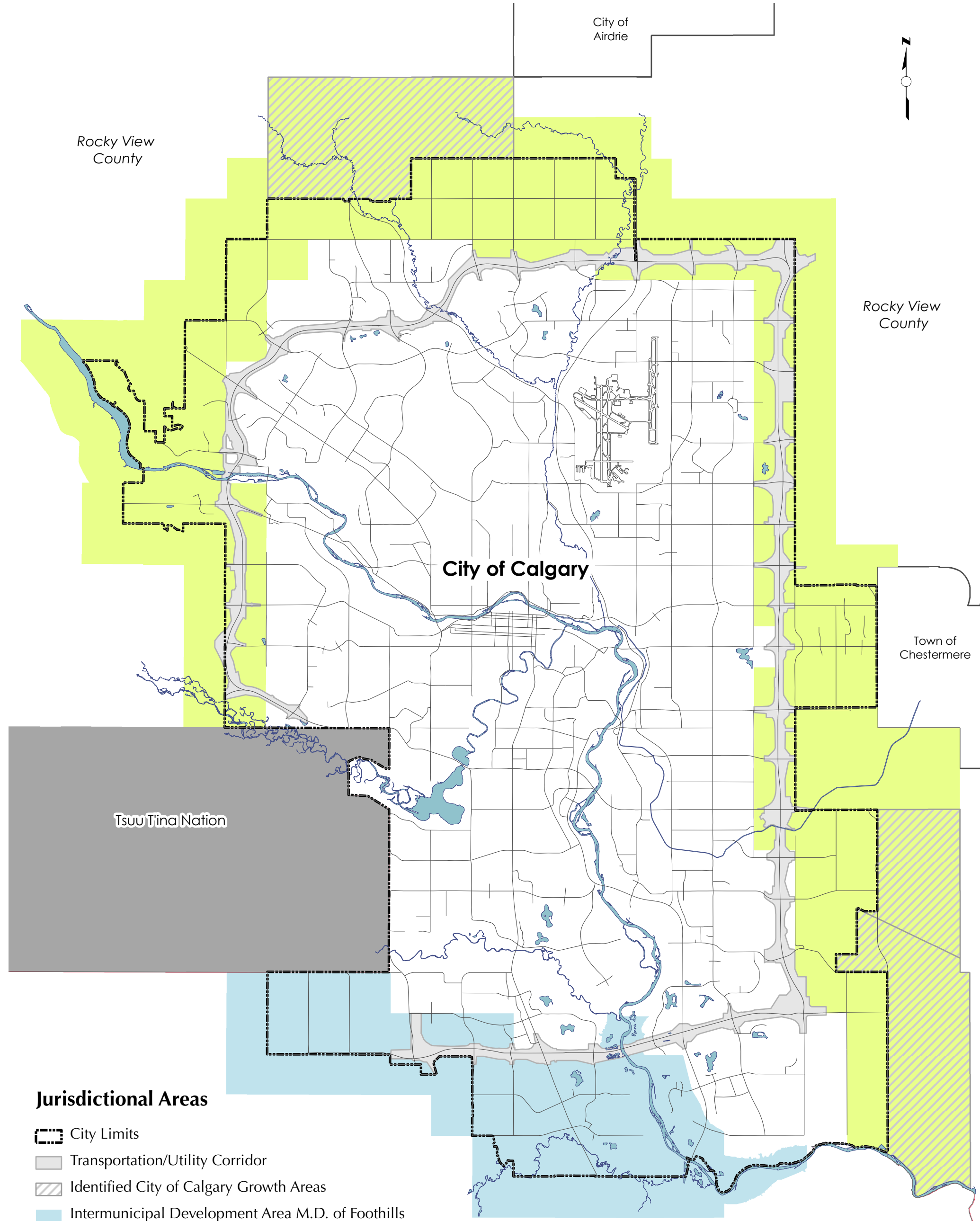




# 4

## Natural Areas and Open Spaces

Approved: 24P2009  
Amended: 18P2015



**Jurisdictional Areas**

- City Limits
- Transportation/Utility Corridor
- Identified City of Calgary Growth Areas
- Intermunicipal Development Area M.D. of Foothills
- Intermunicipal Development Area Rocky View County
- Tsuu T'ina Nation

The City of Calgary provides this information in good faith but it provides no warranty, nor accepts any liability arising from any incorrect, incomplete or misleading information or its improper use. Unless otherwise specified within the MDP, the boundaries or locations of any symbols or areas shown on a map are approximate only, not absolute and will be interpreted as such. They are not intended to define exact locations or the extent of areas or influences. Precise location of areas, influences or boundaries, for the purpose of evaluating development proposals, will need to be confirmed before any development decisions are made or will be determined by City Administration at the time of application. This information may be updated on a daily basis as changes occur. © The City of Calgary All rights reserved. No part of this material may be reproduced or utilized in any form or by any means without the written consent of the City of Calgary.



# Jurisdictional Areas

Approved: 11P2012  
Amended: 18P2015



