

SNOW HALL



SUMMARY

The objective of this project was to design an installation highlighting something made more beautiful by the conditions of winter; a reflective canvas for users to enjoy the beauty, learning and recreation that winter in Calgary offers. We focused on the humble snowflake. Not only does the combination of millions of snowflakes enveloping a landscape make it more beautiful, but each individual snowflake is beautiful in its own right. This canvas is an attempt to reflect the light, ethereal and sublime qualities of a snowflake through a dramatic shift in perspective.

SITE LOCATION

SNOW HALL will be located in the Century Gardens, an urban park located in Calgary's downtown core. It's green space will serve as an ideal location for the installation, which highlights the natural winter environment.

ACCESSIBILITY

The hall will be placed in the Garden's green space to avoid obstructing pedestrian travel. The generous width of the tunnel will allow people to walk beside each other as they traverse through and is wheelchair accessible.



SOCIAL ENGAGEMENT

Snow Hall allows the visitors to dramatically shift their perspective—suddenly viewing a snowfall from the scale of an ant. The intention is to create pause and bring attention to the minute beauties of nature.

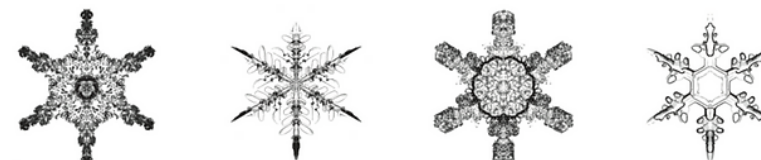
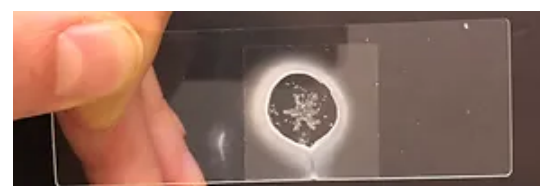
EXTERIOR

The final design takes on a sleek and minimal form meant to blend into the site and reflect the coldness of winter.

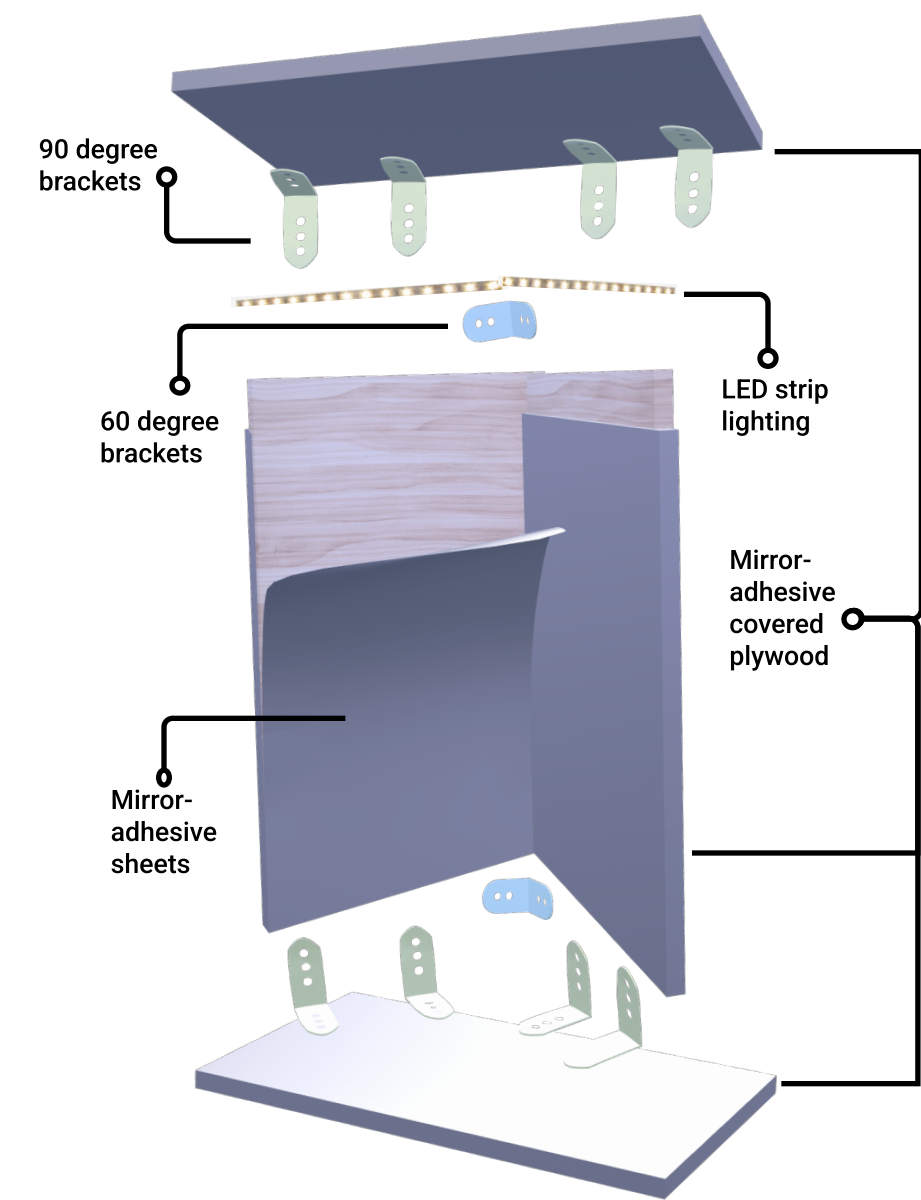
INTERIOR

The magic of Snow Hall is in the snowflake graphics. During snowfall, real snowflakes from the site would be collected and preserved using glass microscope slides and superglue. They would then be examined and photographed under a microscope, and printed at ~500x magnification.

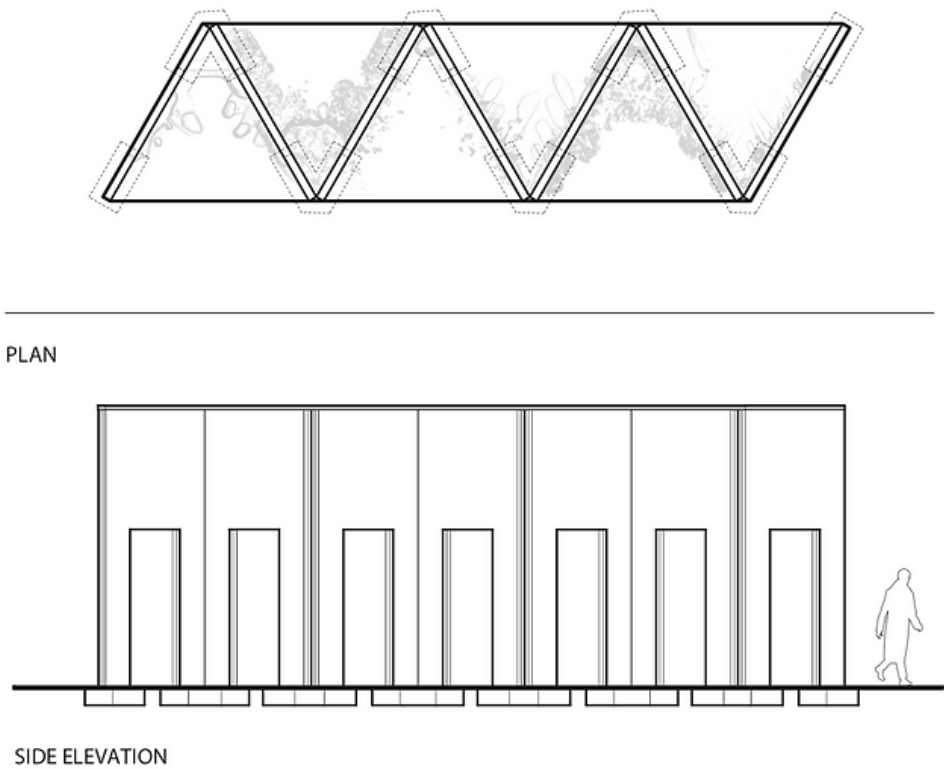
The interior is meant to manipulate the viewer's sense of scale and lead them to discover a new level of beauty in snow they had never realized before; to surprise and delight the users as they enter because the snowflakes are only revealed upon entering.



FABRICATION PROCESS



1. Walls, ceiling and footing plywood pieces are cut and covered in mirror adhesive off-site
2. Prefabricated parts are mocked up off-site to ensure fit
3. Prefabricated parts are brought on-site for installation.
4. All pieces will be assembled by hand using a mixture of brackets and screws.
5. LED lighting will be fixed along top section of hall.
6. Power feed brought in to LED lighting.



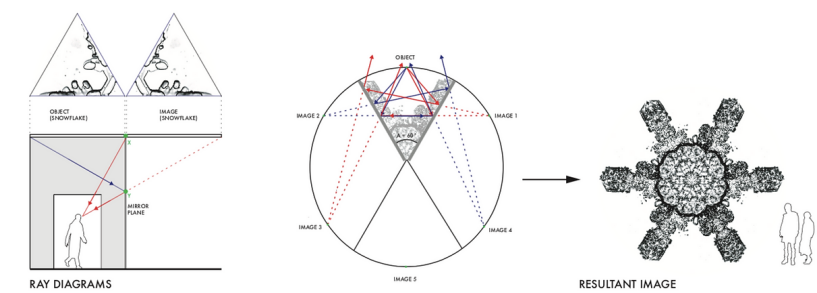
SUSTAINABILITY

SNOW HALL's structure is created primarily from treated lumber. Other materials include steel brackets, LED lighting, and ceramic ink printed graphics. Screws, brackets and wood material can be disassembled and used for other projects once complete.

DURABILITY

The lumbar frame has steel brackets to support its frame. They will be used along every foot of lumbar to ensure strength. The lumbar will also be pressure treated to prevent against rot and wear. The adhesive will provide an extra layer against the elements.

SNOWFLAKE GRAPHICS



The mirrored hallway uses reflecting 1/6th portions of each snowflake to give the illusion of walking under a giant snowfall.

MATERIAL LIST & COST BREAKDOWN

SNOW HALL COST BREAKDOWN			
Product	Quantity	Price	Cost
Note: 10 Moblies per Arch			
Plywood (8' x 4' x 3/4")	9	\$ 72.98	\$ 656.82
Plywood (8' x 4' x 1/2")	3	\$ 49.98	\$ 149.94
60 degree bracket	45	\$ 6.97	\$ 313.65
90 degree bracket	120	\$ 0.78	\$ 93.60
1/4" bolt	660	\$ 0.09	\$ 56.10
1/4 " washer	660	\$ 0.18	\$ 118.80
1/4" nut	660	\$ 0.10	\$ 63.89
Mirror Adhesive Sticker	108	\$ 34.99	\$ 3,778.92
LED strip light	2	\$ 29.99	\$ 59.98
Total Cost			\$ 5,231.72
Labour Cost (Rough Estimate)			
Time (hours)	Rate	Cost	
16	\$ 30.00	\$ 480.00	
Total Cost (Number of Workers)	2	\$ 960.00	
Misc. Costs			
Flights: Approx. \$1000 (x3) = \$3000			
Material Testing: \$750			
Total Project Cost (After misc.)			
\$ 10,001.70			
After tax:			
\$ 11,301.92			