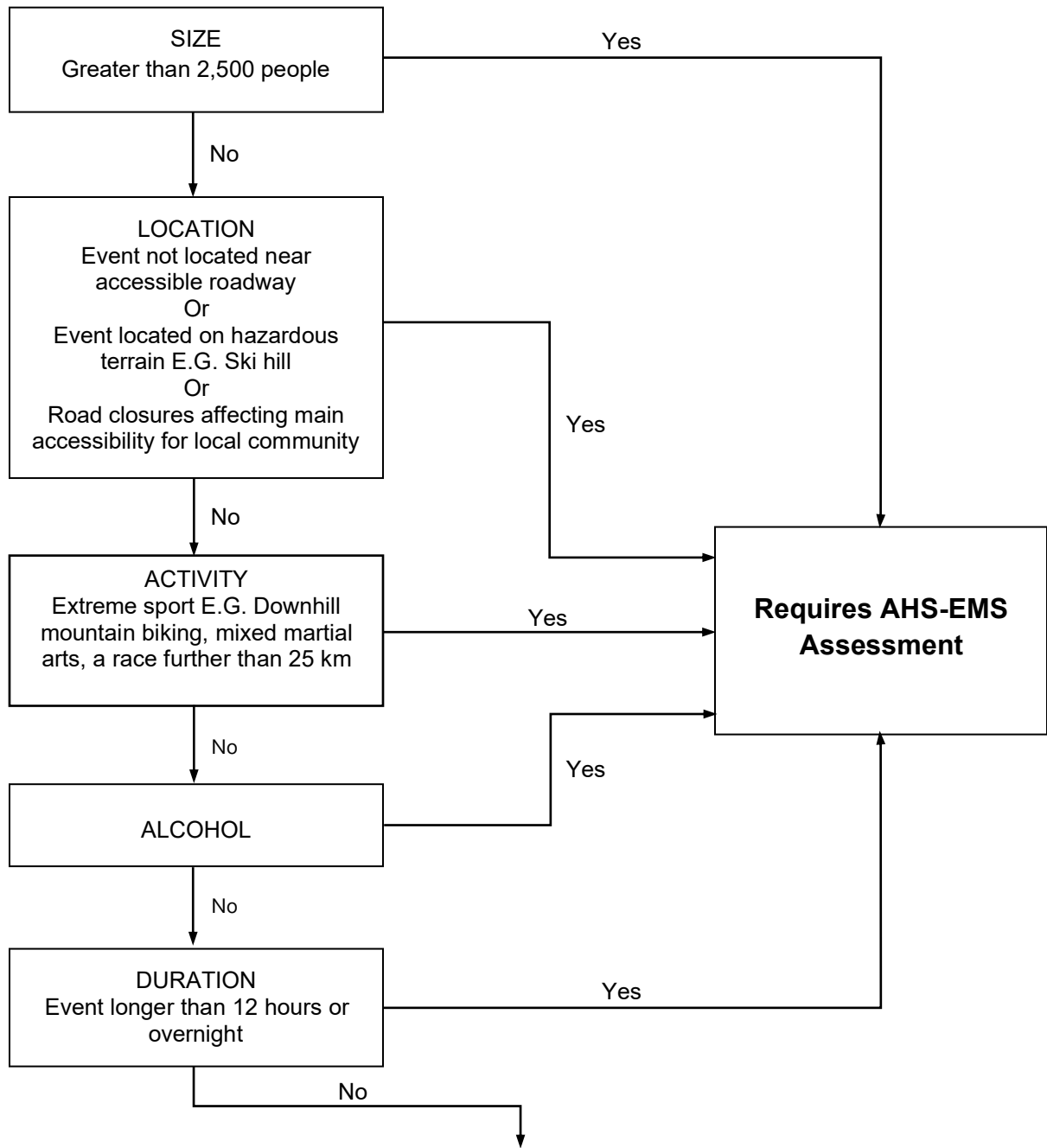


Appendix D – Determining Medical Coverage



1. Please ensure all event staff has communication accessibility for 9-1-1.
2. Ensure all private medical providers have insurance requirements needed for event coverage.
3. Basic First Aid coverage can be considered E.G. St. John's First Aid.
4. Any further concern with medical coverage, please contact Alberta Health Services EMS at 403-9550-9532 to discuss options for coverage.