



Vision Zero Improvements Collector Posted Speed Reduction Framework

Purpose

Following the success of Residential Speed Reductions in lowering severe collisions, Council directed a city-wide review of collector road speeds to identify where reductions to 40 km/h are appropriate. This document outlines the process for assessing, implementing, and monitoring 40 km/h reductions on collector roads. The framework builds on lessons learned since 2021 and ensures posted speeds are clear, predictable, and reflective of actual operating speeds. The ultimate goal is to enhance safety for all road users, particularly vulnerable road users (VRUs), within residential communities.

Scope

This framework applies to all collector roads and Primary Community Entrances leading into residential areas.

Primary Factors in Reducing Posted Speeds

- **Roadway classification**
 - Collector roads and Primary Community Entrances are the focus.
 - Primary Community Entrances: usually classified as collectors, arterials or neighborhood boulevards with posted speed limits of 50 or 60 km/h, length is 500m or less, connecting a major arterial to a collector.
- **Traffic speed characteristics**
 - Average vehicle speeds and 85th percentile speeds are used when key environmental indicators are not present (see figure 1 below).
- **Eligibility Factors for Special Consideration**

For road sections where the average speed and 85th percentile speed are within 4km/h and 2km/h above the speed criteria, respectively, special consideration will be given if any of following conditions are present:

 - Driveways with direct access onto the roadway.
 - Multi-family residential buildings located near the roadway, i.e., the building is <5 m from the curb.
 - Schools, playgrounds and parks directly abutting the roadway
 - On-street parking on either side of the roadway
- **Safety objectives**
 - Reduce the likelihood and severity of collisions along collector roads and Primary Community Entrances.
 - Support safe interactions at driveways and crossings where vehicles, pedestrians, and cyclists converge.
 - Promote consistent driving behavior by reducing speed variation among vehicles. It is not practicable to have speed limits going up and down along the same corridor as drivers become confused and adherence to the speed limit is reduced.
- **Additional notes**
 - All new collectors approved for speed limit reduction will be posted 40 km/h. Existing 50 km/h signs will be swapped to 40 km/h.
 - Previously reduced collectors prior to framework implementation will be posted 40 km/h.

Vision Zero Improvements Collector Posted Speed Reduction Framework

Criteria for Reducing Posted Speeds to 40 km/h

Figure 1 shows the step-by-step process for assessing, implementing, & monitoring 40 km/h reductions on collector roads, guiding staff through location review, evaluation, and approvals.

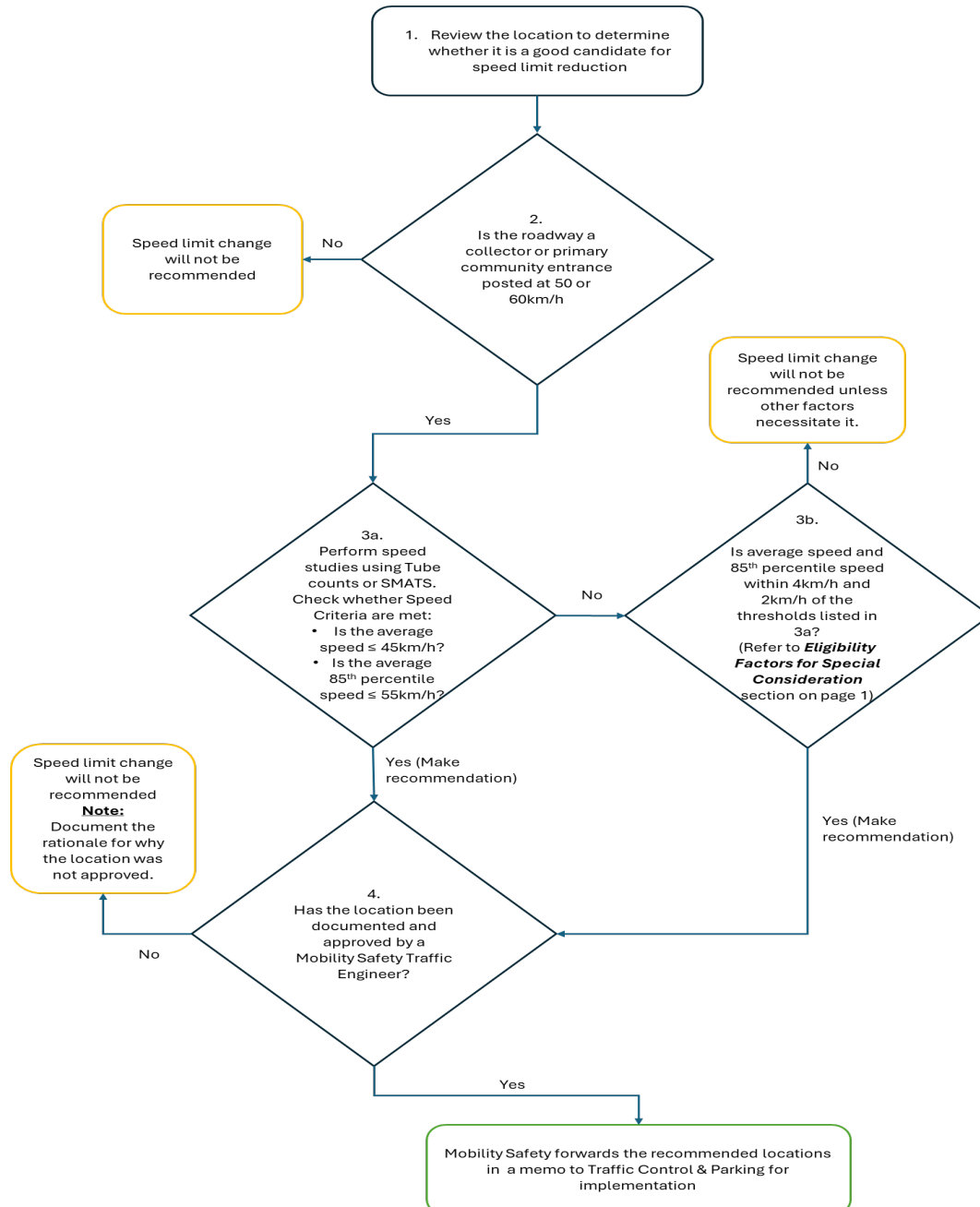


Figure 1: Collector Posted Speed Reduction Framework

Approved By:

Business Unit Approval	Date	Created By/ Published By	Last Review Date
Pat Grisak	2026/02/11	Lotanna Iloekwe	2026/02/11