



FOR LEASE

10158 Sacramento DR SW, Calgary, AB

300 sq. ft. retail opportunity within Southland C-Train station

LAND TYPE

Located in Southland C-Train Station

TERMS

Negotiable

COMMUNITY

Southwood

RENTABLE AREA

300 sq. ft.

LAND USE

S-CRI

Property highlights

- High daily foot traffic from transit riders
- 300 sq. ft. retail unit ideal for convenience store, grab-and-go food or specialty services
- Rent: Market Rates
- Operating Costs: TBD
- Walking distance from the surrounding communities
- Property is 'as is,' ready for fit-out and customization to your business needs
- To apply, please submit an Expression of Interest

Additional info

OPEN HOUSE:

March 10, 2026
8:30 a.m. - 12:00 p.m. MST
by appointment only

SUBMISSION DATE OPEN:

February 17, 2026

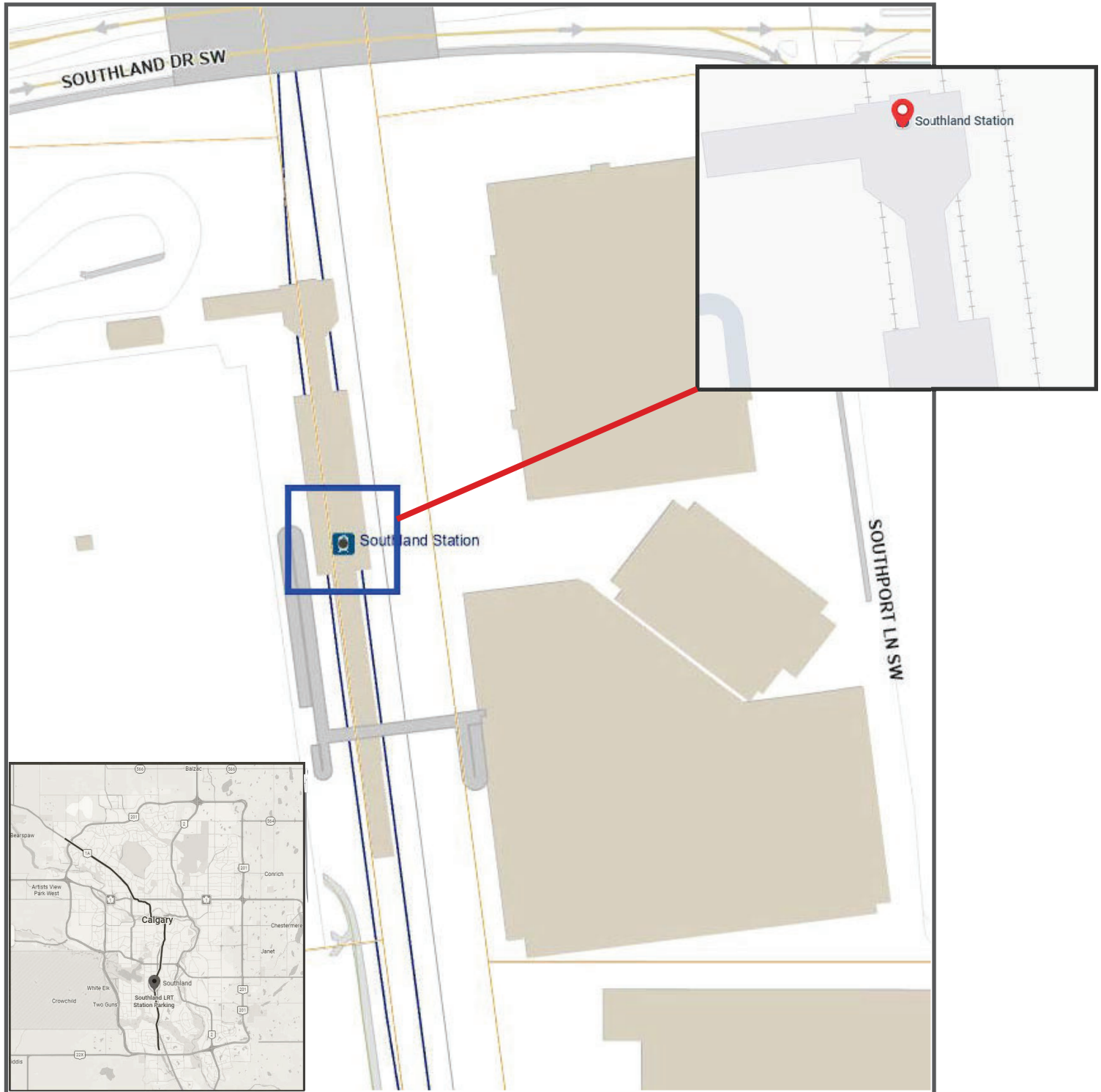
SUBMISSION DATE CLOSED:

March 31, 2026 at
11:59 p.m. MST

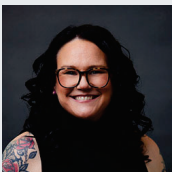
Gallery



Context map with inset



Contact us



Melissa Dagg
Commercial Leasing Agent
Leasing & Property Management
EMAIL
Melissa.Dagg@calgary.ca
OFFICE 403.700.5309

Submit interest using the
Expression of Interest Form

**City of Calgary Real Estate &
Development Services**

Administration Building
3rd Floor (#195) 323 7 Ave S.E.
Calgary, Alberta T2G 0J1

To view all land sales and property listings, visit

calgary.ca/realestate

The information provided herein has been gathered from sources deemed reliable, but is not warranted as such and does not form any part of any future contract. This offering may be altered or withdrawn at any time without notice.