

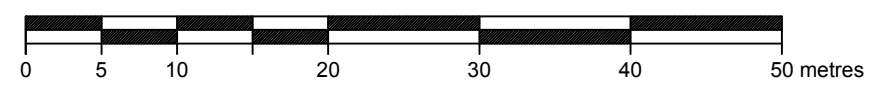
# PLAN SHOWING SURVEY OF ROAD WIDENING

AFFECTING  
LOTS 10 TO 14, BLOCK 17, PLAN 2864 AF

WITHIN THE  
S.E. 1/4 SEC. 29, TWP. 24, RGE. 1, W.5M

CALGARY, ALBERTA 2019

SCALE: 1:500



## LEGEND

The following symbols may appear on this plan:

Statuory iron posts are shown thus: Found ● Placed ○ and marked 928

Auxiliary monuments are shown thus: Found ■ Placed □

Temporary survey points are shown thus: X

Alberta Survey Control Markers found shown thus: ● RP

Geo-reference point shown thus: ●

GNSS derived grid coordinates of the Geo-reference point: 5658988.55 m N -6993.25 m E

Area to be registered contains 0.034 ha and shown outlined thus: \_\_\_\_\_

## NOTES

Distances are in metres and decimals thereof  
Bearings are grid bearings and are derived from GNSS observations at ASCM 311787  
Datum: NAD83 (Original)  
Projection: 3TM  
Reference Meridian: 114° West  
Combined Scale Factor: 0.999732

## ABBREVIATIONS

The following abbreviations may appear on this plan:

A	Arc Length	MSR	Municipal and School Reserve
AR/W	Access Right of Way	N	North
A.L.S.	Alberta Land Surveyor	NAD83	North American Datum of 1983
ASCM	Alberta Survey Control Marker	ODR/W	Overland Drainage Right of Way
C. of T.	Certificate of Title	P/L	Property Line
CB	Chord Bearing	Pl.	Placed
c.s.	Counter sunk	Pos.	Position
calc.	Calculated	PUL	Public Utility Lot
conc.	Concrete	R	Radius or Radial
D.H.	Drill Hole	Re-est.	Re-established
E.	East	Ref.	Reference
ER	Environmental Reserve	Res.	Restored
Est.	Established	RP	Geo-reference Point
Fd.	Found	RGE	Range
GNSS	Global Navigation Satellite System	R/W	Right of Way
ha	Hectare	S	South
I.	Statuory Iron Post	SEC	Section
L.S.D.	Legal Subdivision	3TM	3° Transverse Mercator
M.	Mound or Meridian	TWP.	Township
Mk.	Mark	TUC	Transportation Utility Corridor
Mkd.	Marked	UR/W	Utility Right of Way
Mp.	Marker Post	W.	West
MR	Municipal Reserve	△	Central Angle of Curve

LAND TITLES OFFICE

PLAN NO. \_\_\_\_\_

ENTERED AND REGISTERED

ON \_\_\_\_\_

INSTRUMENT NO. \_\_\_\_\_

A.D. REGISTRAR

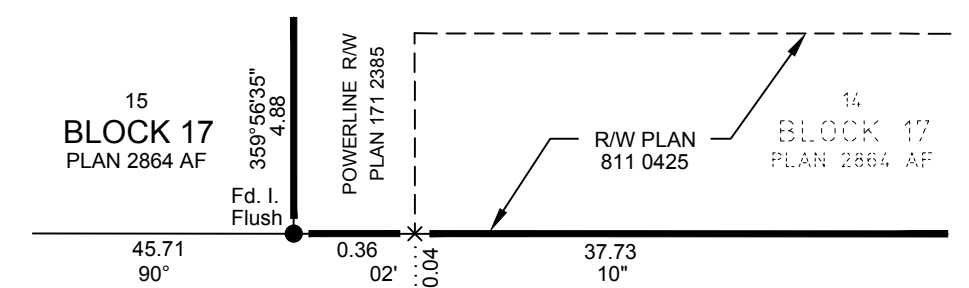
## SURVEYOR

**BRANDON ELLIS, A.L.S.**

Surveyed between the dates of October 11, 2019 and Month ##, 201# in accordance with the provisions of the Surveys Act.

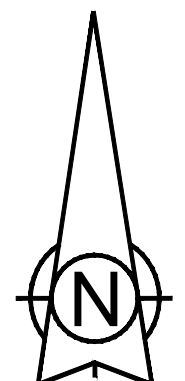
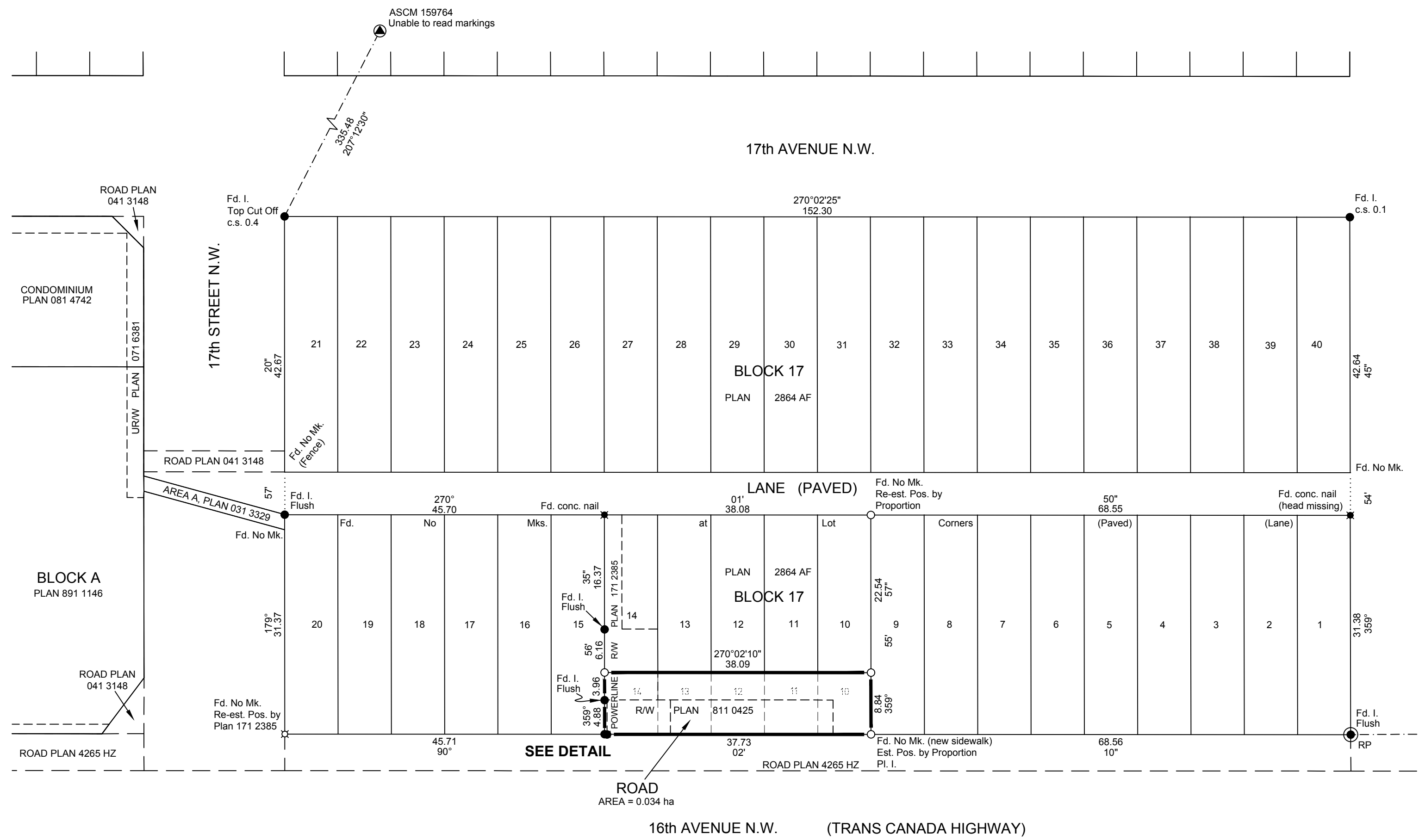
## PLAN REQUESTED BY

THE CITY OF CALGARY



16th AVENUE N.W. (TRANS CANADA HIGHWAY)

DETAIL  
NOT TO SCALE



89°34'16" 437.16 ASCM 399014 Marked 399014

## THE CITY OF CALGARY

Field Surveying Services Division  
800 Macleod Trail SE, Calgary, AB T2P 2M5

Date: November-13-2019	Surveyed by: GK
File No.: 1195774	Drawn by: CK
Drawing Name: 1195774-Road.dwg	Checked: BE