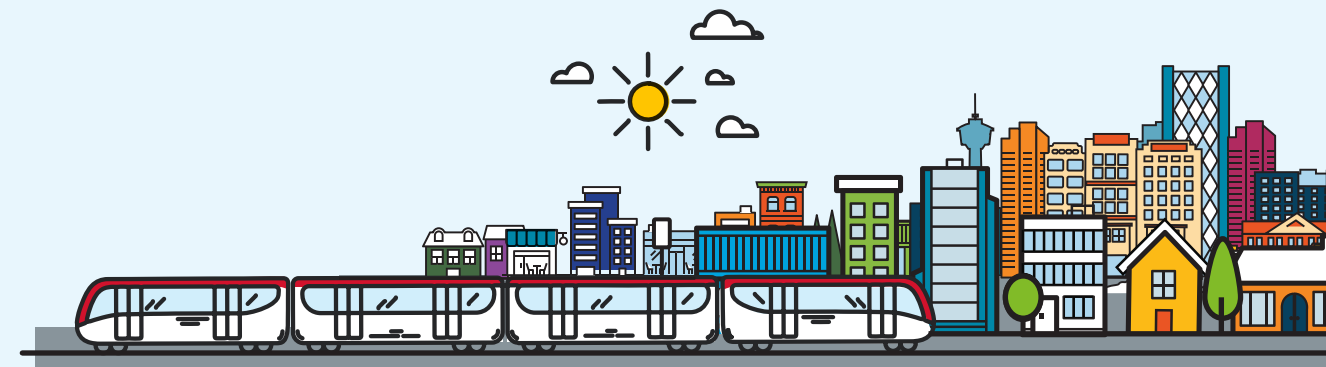




The **Green Line LRT Stage 1** is a city shaping project that will improve mobility in north and southeast Calgary, that connects people and places, and will enhance the quality of life for all Calgarians.



Investing in Calgary

Unprecedented investment from all orders of government



\$1.7B
Government of Alberta

\$1.64B
Government of Canada

\$1.56B
City of Calgary
(capital cost)

Total \$4.9B

Plus
\$640M
City of Calgary
(financing cost)

Environmental Sustainability

Stage 1 will save up to **30,000 tons** of Greenhouse Gas emissions a year in support of municipal, provincial and federal environmental plans.



Improving mobility choices with high-quality service

Stage 1 will serve up to 65,000 LRT customers daily



- 37 minute ride from 16 Avenue N. to Shepard S.E.
- 15 new stations
- 2 tunnels and 10 bridges, creating a travel time advantage
- Every 10 minutes, 15 hours a day, 7 days a week
- Increases LRT network usage by over 13% by 2028

Green Line will save Calgarians **over 10,000 hours a day**



Time that can be spent working, playing, or with family

Reduces travel times for transit users by up to **20-25 minutes**

Catalyzing development and recovery

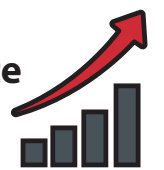
Constructing the Green Line will be the **largest job creation project in the City**



- Over 100 enabling works projects complete or underway, employing Calgarians today
- LRT systems are a major attractor for businesses and young knowledge professionals looking to relocate

- Nearly 200,000 jobs will be within walking distance of Green Line stations
- Connects 6 high priority Transit Oriented Development (TOD) sites on opening day, spurring development and community investment

Stage 1 will generate **\$2.2B** in benefits to Calgary



Over **\$2B** in potential property value uplift by 2040



20,000 jobs both direct and supporting will be created by Stage 1 alone

Connecting Calgarians to an integrated transit network

Stage 1 expands the integrated transit network, connecting to the Red and Blue LRT lines and all 4 new MAX bus rapid transit routes



Within a 10 minute walking distance there are ...

- | | | | |
|--------------------------------------|---|--------------------------------------|---|
| 31 parks | 16 cultural facilities | 7 police and fire stations | 6 Provincial and Federal service buildings |
| 22 schools | 15 recreation centres | 7 community associations | 3 libraries including the downtown Central Library |
| 20 seniors' housing complexes | 7 Alberta Health Services facilities | 6 post-secondary institutions | |

Laying foundations for future expansion

- Stage 1 builds the core of the Green Line and will enable future incremental expansion as funding is available to realize the full vision

Future connection to Calgary International Airport



Green Line delivers on Council's commitment to the RouteAhead vision, the Municipal Development Plan and the Calgary Transportation Plan