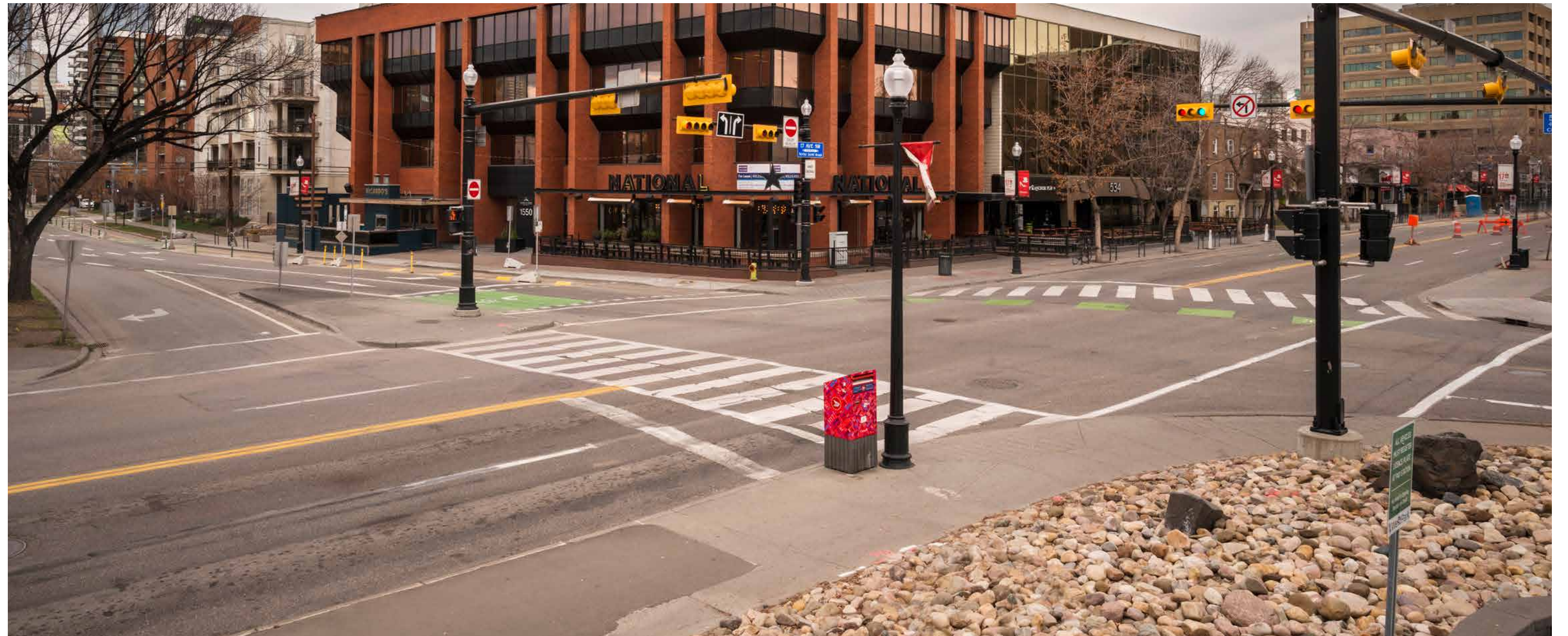


# What to expect for construction on 17th Ave. in 2018

Before



After



- Requires full road closures for each block
- Where required, local-access-only driving lanes through construction zones to driveways and parking lots
- Maintain walking and delivery access to businesses from sidewalks, back alleys and side streets
- Keep crosswalks at major intersections
- **Primary construction hours:**  
Monday to Saturday, 7 a.m. - 7 p.m.  
(some night and weekend work may be required)