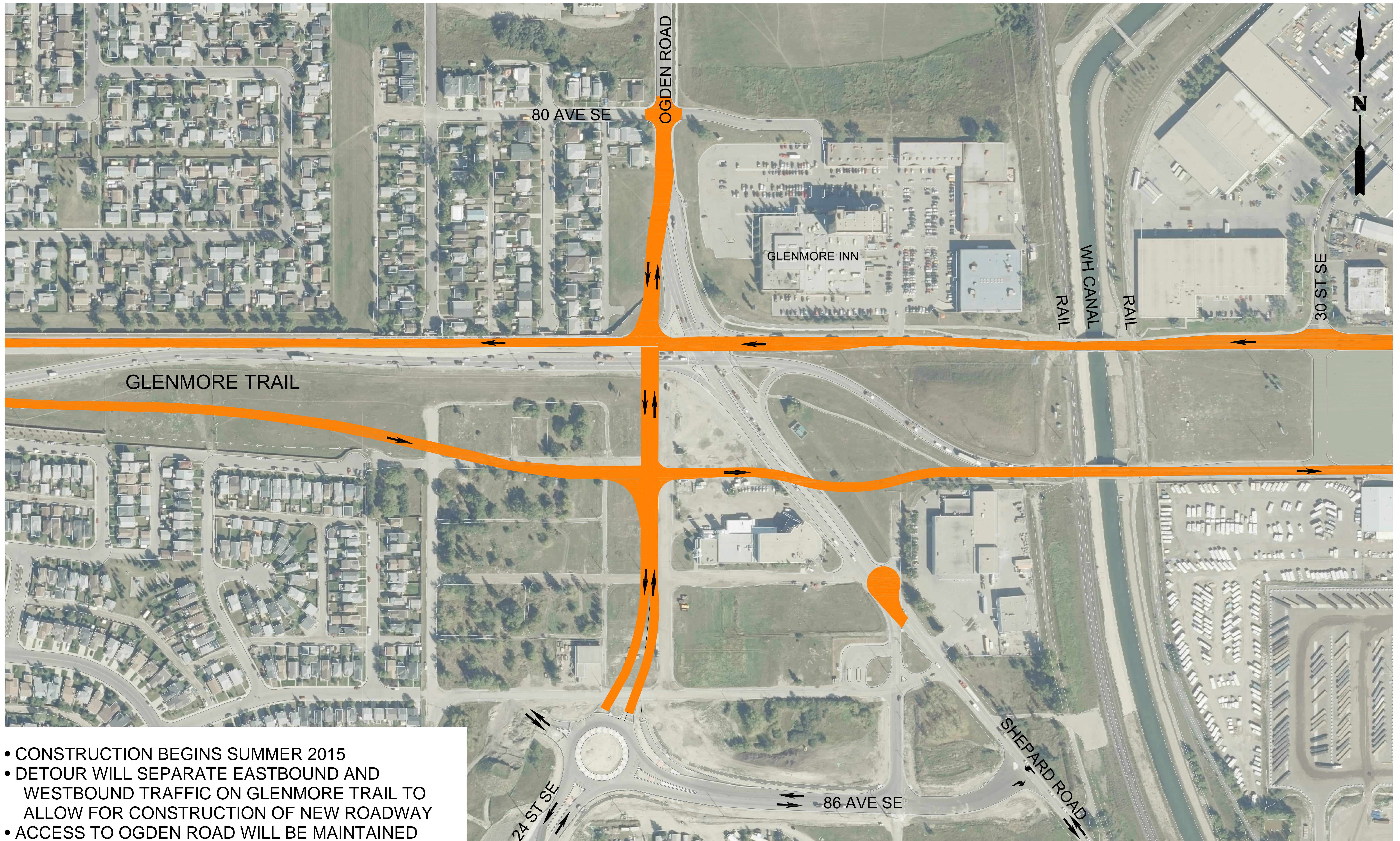


# GLENMORE TRAIL AND OGDEN ROAD SE INTERCHANGE - DETOUR PLAN



- CONSTRUCTION BEGINS SUMMER 2015
- DETOUR WILL SEPARATE EASTBOUND AND WESTBOUND TRAFFIC ON GLENMORE TRAIL TO ALLOW FOR CONSTRUCTION OF NEW ROADWAY
- ACCESS TO OGDEN ROAD WILL BE MAINTAINED