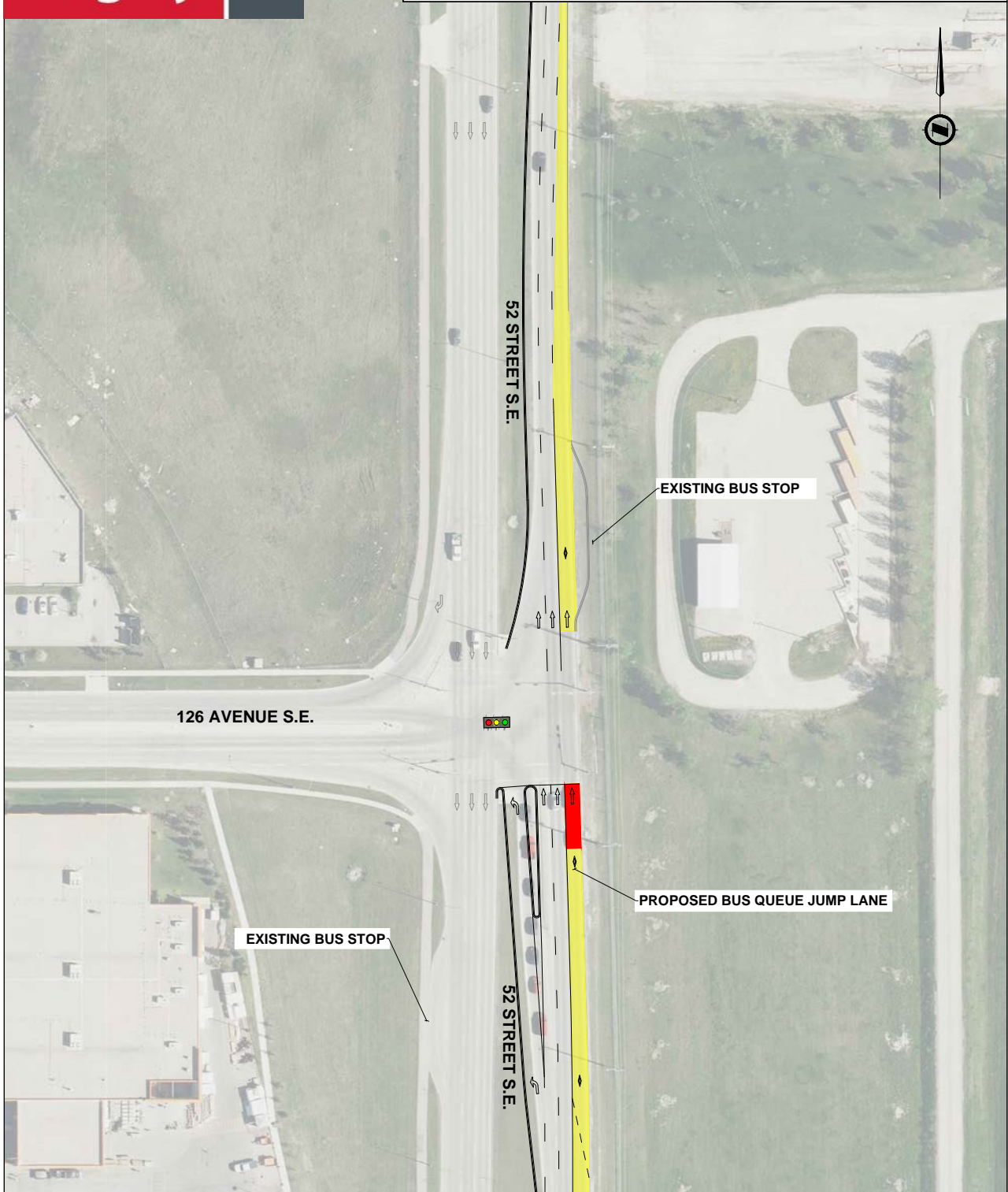
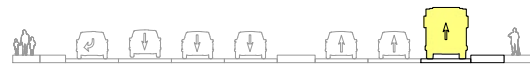


52 Street N.E./126 Avenue S.E. intersection design



PROPOSED ROAD DESIGN NORTH OF 126 AVE S.E.



PROPOSED ROAD DESIGN SOUTH OF 126 AVE S.E.



NOTE: DESIGN IS SUBJECT TO CHANGE AFTER FURTHER REVIEW AND ANALYSIS