



Green Line LRT

Upcoming Road Closures for Utility Work

IMPACTS ANTICIPATED TO BEGIN: July 21, 2022

Notice: June 27, 2022

As part of the Beltline Downtown Utility Relocation Project, multiple utility projects are currently in active construction in the Beltline East area. Current projects are impacting 12 Avenue S.E. between 3 Street S.E. and 6 Street S.E. This phase of work will require an intersection closure. The cycle track between 3 Street S.E. and Olympic Way S.E. will be rerouted via 3 Street S.E. to 10 Avenue S.E. for the duration of the project. Detour and wayfinding signage will be in place. Access to the Macdonald Avenue Bridge will remain open throughout construction.

Beginning July 21, the intersection at Olympic Way S.E. and 12 Avenue S.E. will be closed to vehicle and cycling traffic. Both 11 Avenue S.E. and 12 Avenue S.E. will be converted to two-way travel between Olympic Way and 3 Street S.E. Detours will be in place.

What is the work?

Utility Casing and Deep Utilities (Water, Sanitary, Storm Water) Project

Utility casing installation and deep utility construction is continuing along 12 Avenue between Olympic Way S.E. and 6 Street S.E. This will include a full closure in the intersection of Olympic Way S.E. and 12 Avenue, which will remain in place until Fall 2022. Please follow detour signage.

[Additional third-party utility work](#) will also be active in this intersection. If you have any questions about this specific work, please reach out to ENMAX Customer Relations Team:

403-514-3990

powercustomerrelations@enmax.com

www.enmax.com/projects/greenline

What can you expect?

Utility Casing and Deep Utilities Project

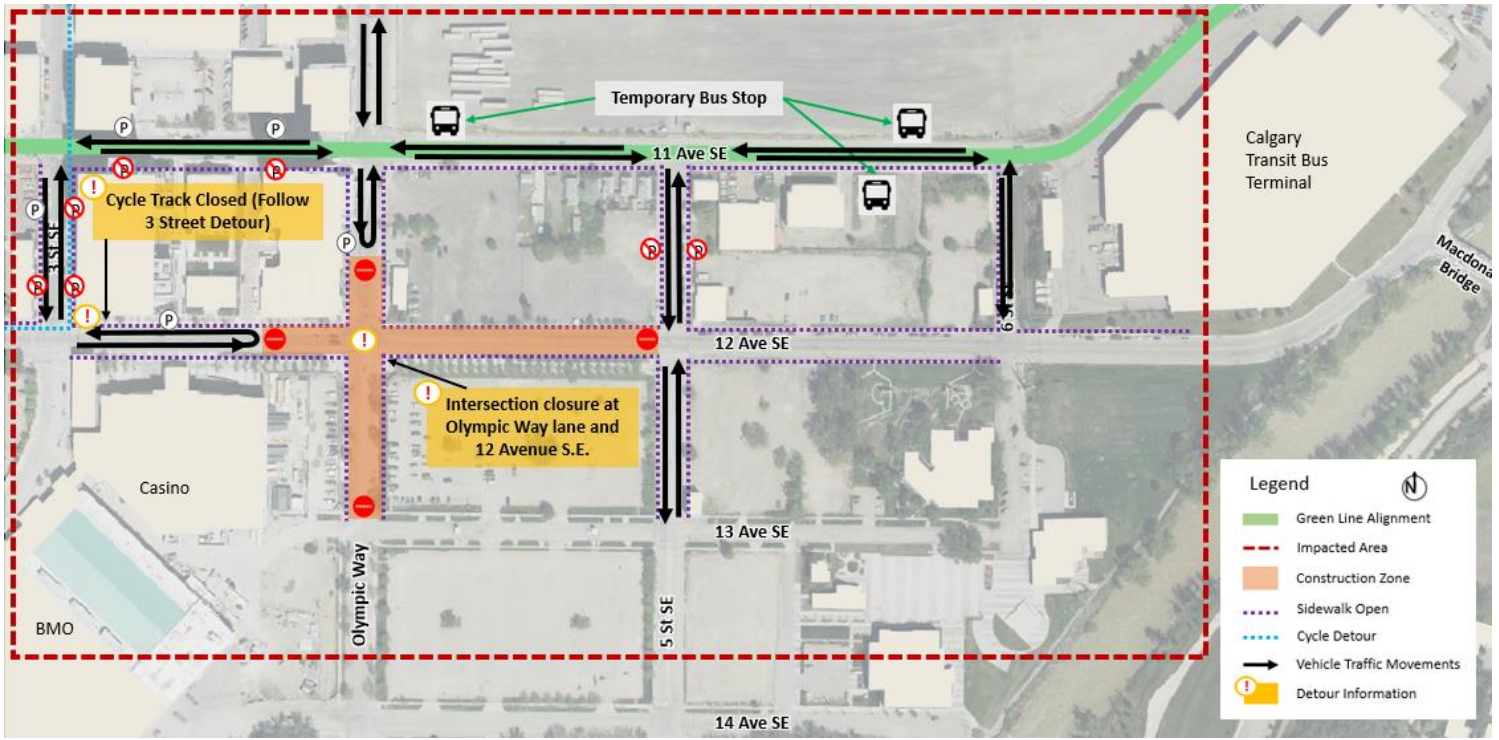
- **NEW: Closure of the intersection at Olympic Way S.E. and 12 Avenue S.E. to cyclists and vehicles.**
- Conversion of one block of 11 Avenue S.E. and 12 Avenue S.E. to two-way travel between Olympic Way S.E. and 3 Street S.E.
- Removal of on-street parking
- Some tree removal required
- Access to local business will remain open throughout



G Green Line LRT

- Local traffic to Calgary Stampede will be maintained via a lane reversal along 11 Avenue, from 3 Street S.E.
- General construction noise and increased construction traffic in the area.
- Construction will continue into Fall 2022.
- Pedestrian movements around the intersection will be maintained
- Cycle track will be closed between 3 Street and Olympic Wy. S.E. for the duration of the Beltline Downtown Utility Relocation Project. Alternate routing is provided via 3 Street and 10 Avenue S.E.

Comprehensive Utility Construction Impacts (12 Avenue S.E.)



Contact Information

For more information about the Utility Casings and Deep Utilities Project or if you have any questions about the Green Line LRT project, please contact 311 or email greenline@calgary.ca.



Green Line LRT

About Green Line LRT

The Green Line is Calgary's next light rail transit (LRT) line. It is also the largest infrastructure investment in our city's history. It comes with \$4.9 billion in commitments from the Government of Canada, Government of Alberta, and City of Calgary.

Stage 1 will be built in 2 phases aligning with Council direction to build the Green Line in a stage-gate project approach. Phase 1 will build 18km of the LRT from Shepard to Eau Claire allowing for easier expansion both North and South. The current work in the Beltline and Downtown areas is part of the utility relocation program required to make way for Phase 1 construction.

Green Line is an important part of Calgary's economic recovery creating 20,000 jobs in Stage 1 alone and serves as a platform for long-term city building that will encourage redevelopment and investment opportunities in Calgary.

For more information about the Green Line project, please visit www.calgary.ca/greenline