

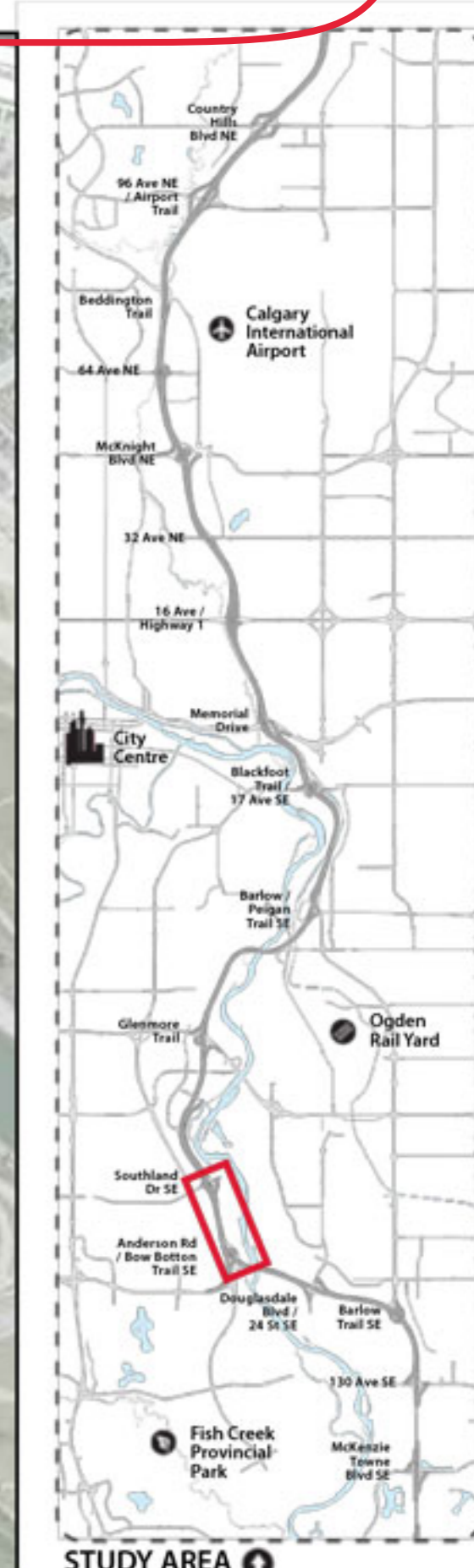
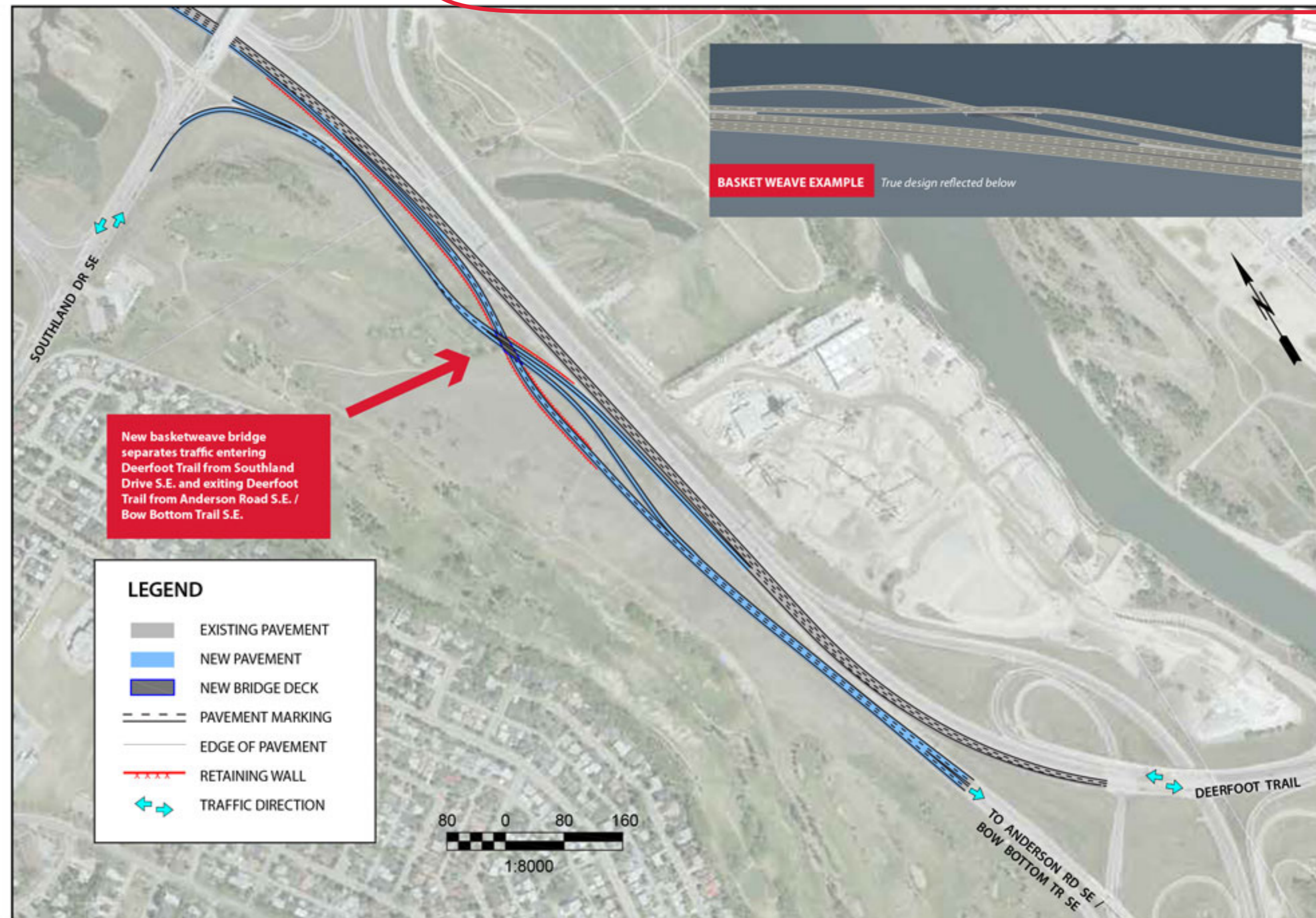
# Deerfoot Trail Study Short-term recommendations

## Southland Drive S.E. to Anderson Road S.E. southbound basket weave

- ✓ Resolves weaving issues between Southland Drive S.E. and Anderson Road S.E.
- ✓ Provides connection and eliminates local trips on Deerfoot Trail between Southland Drive S.E. and Anderson Road S.E. / Bow Bottom Trail S.E.
- ✓ Improves safety by removing weave
- ✓ Reduces congestion and improves travel times
- ✗ Adding a third southbound lane on Deerfoot Trail east of Southland Drive S.E. would require three new bridge structures. Some traffic congestion and speed reduction may remain during peak hours.

\*\*\*Please note: This plan is no long valid\*\*\*

### Short-term Recommendation



### Existing Conditions

