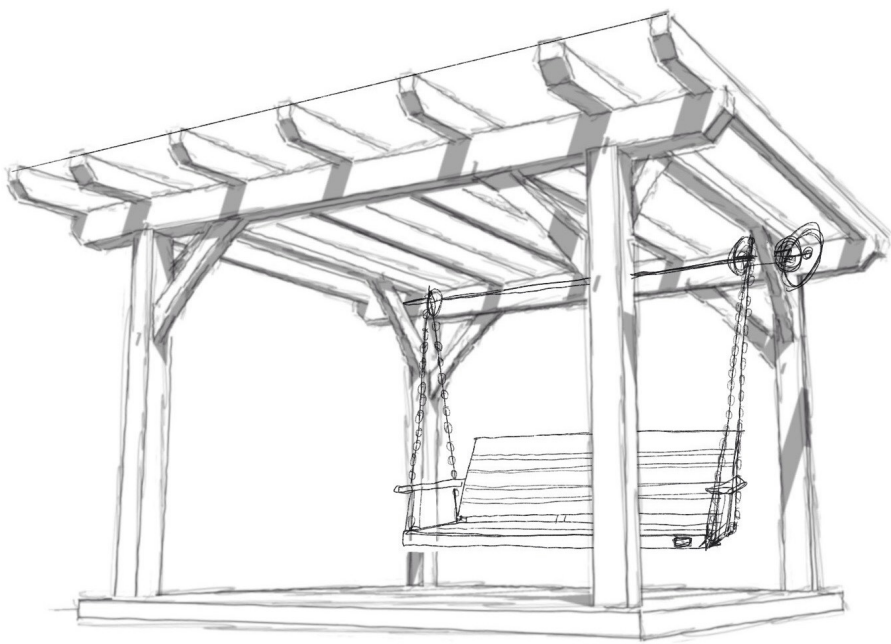


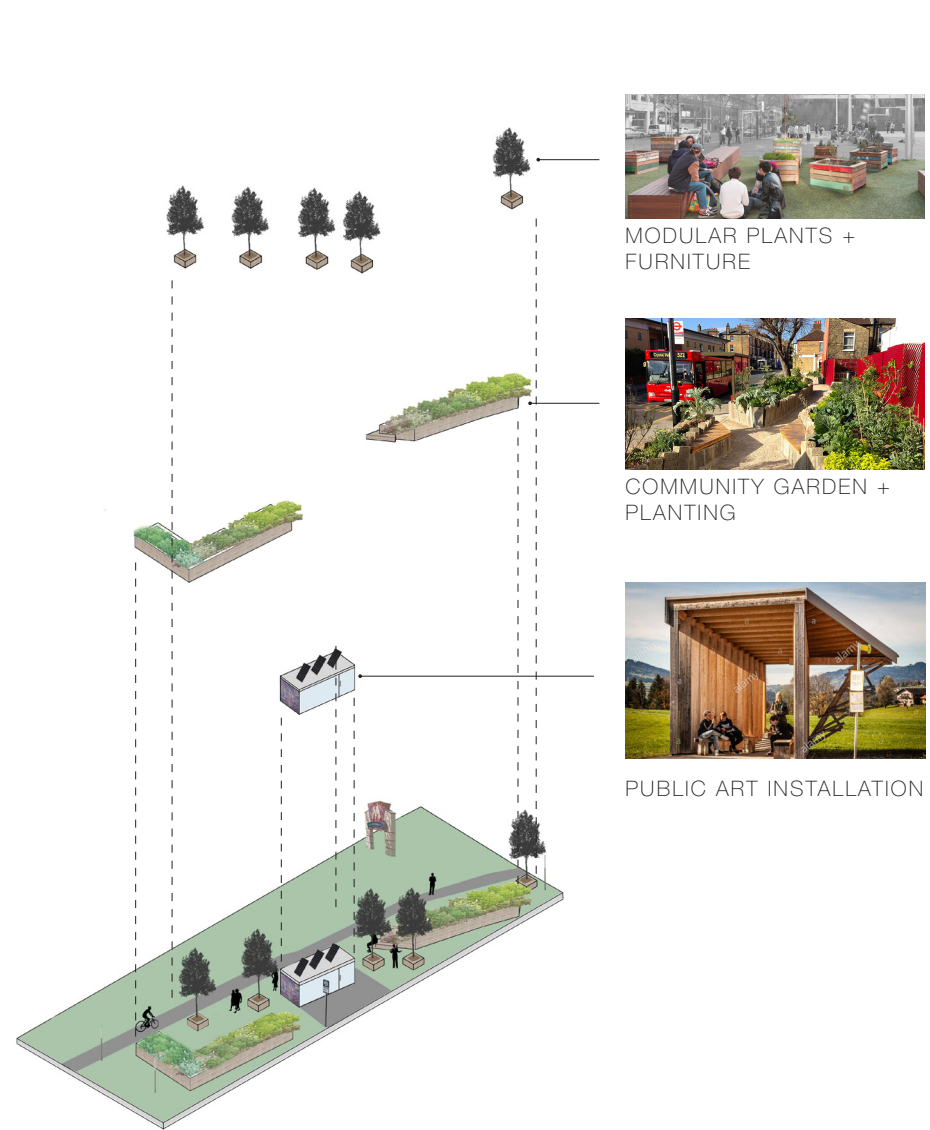


Creating an interactive and desirable destination

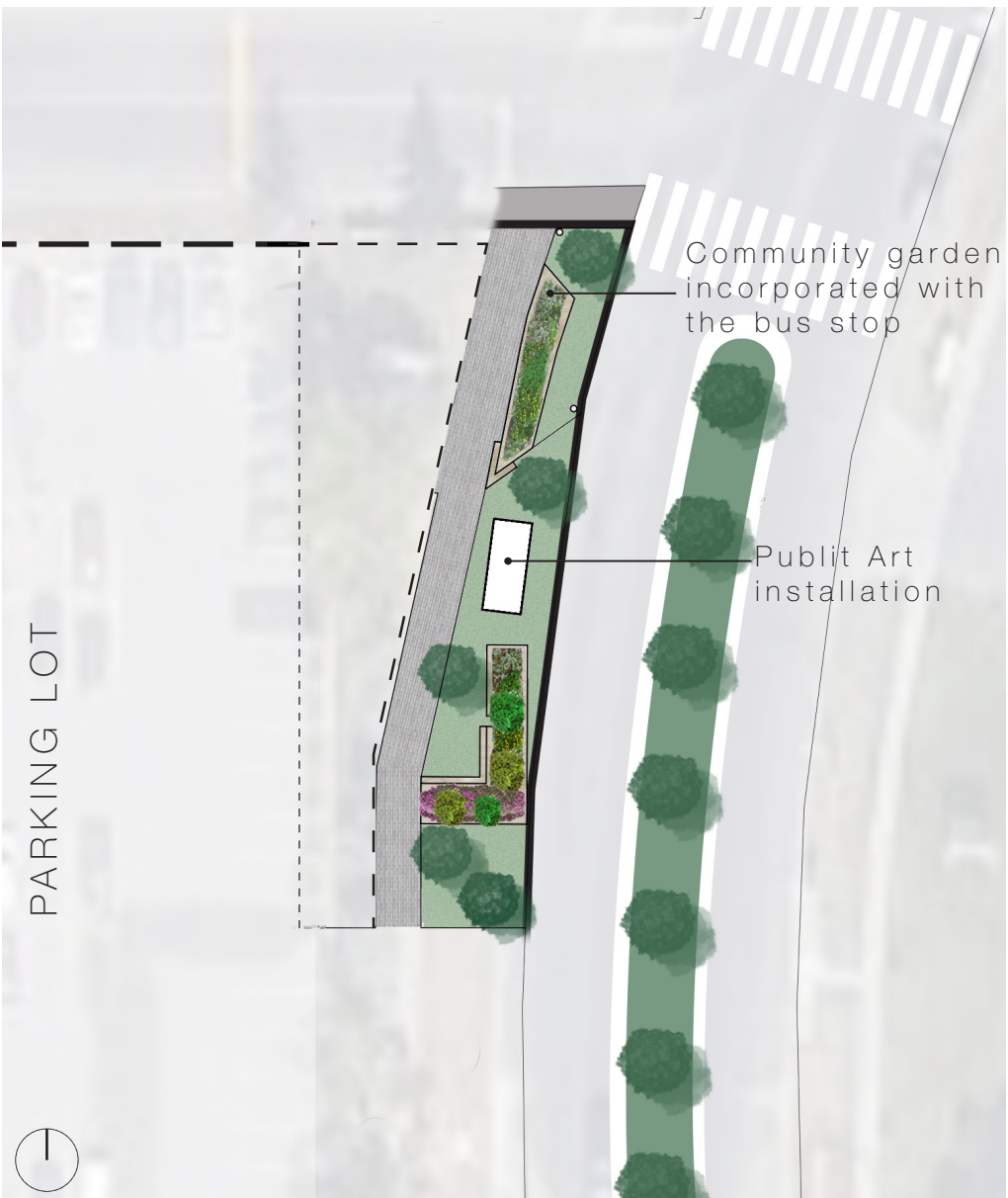


Public Art installation concept by Daniel J. Kirk

A swinging-bench structure using timber framing technique with a kinetic power component. E-devices can be plugged in and charged with the swinging motion.



Design Concept



Site Plan

destination: marlborough

The goal of destination: marlborough is to create an inviting and vibrant bus stop that can be enjoyed by everyone. The project includes planting beds that can be utilized as a community garden and an interactive public art installation.