



June 20, 2014

Re: Riparian Management Category Maps

During 2013, internal and external experts were consulted regarding the potential to assign management categories to riparian areas within Calgary. The following five riparian management categories and definitions were developed:

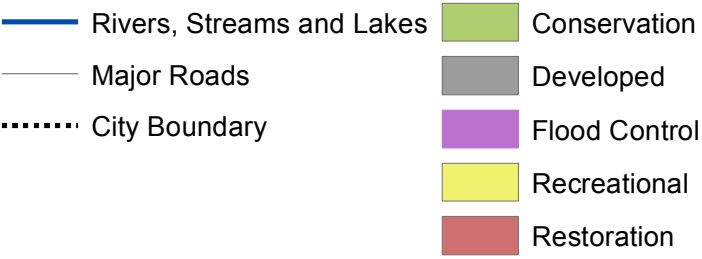
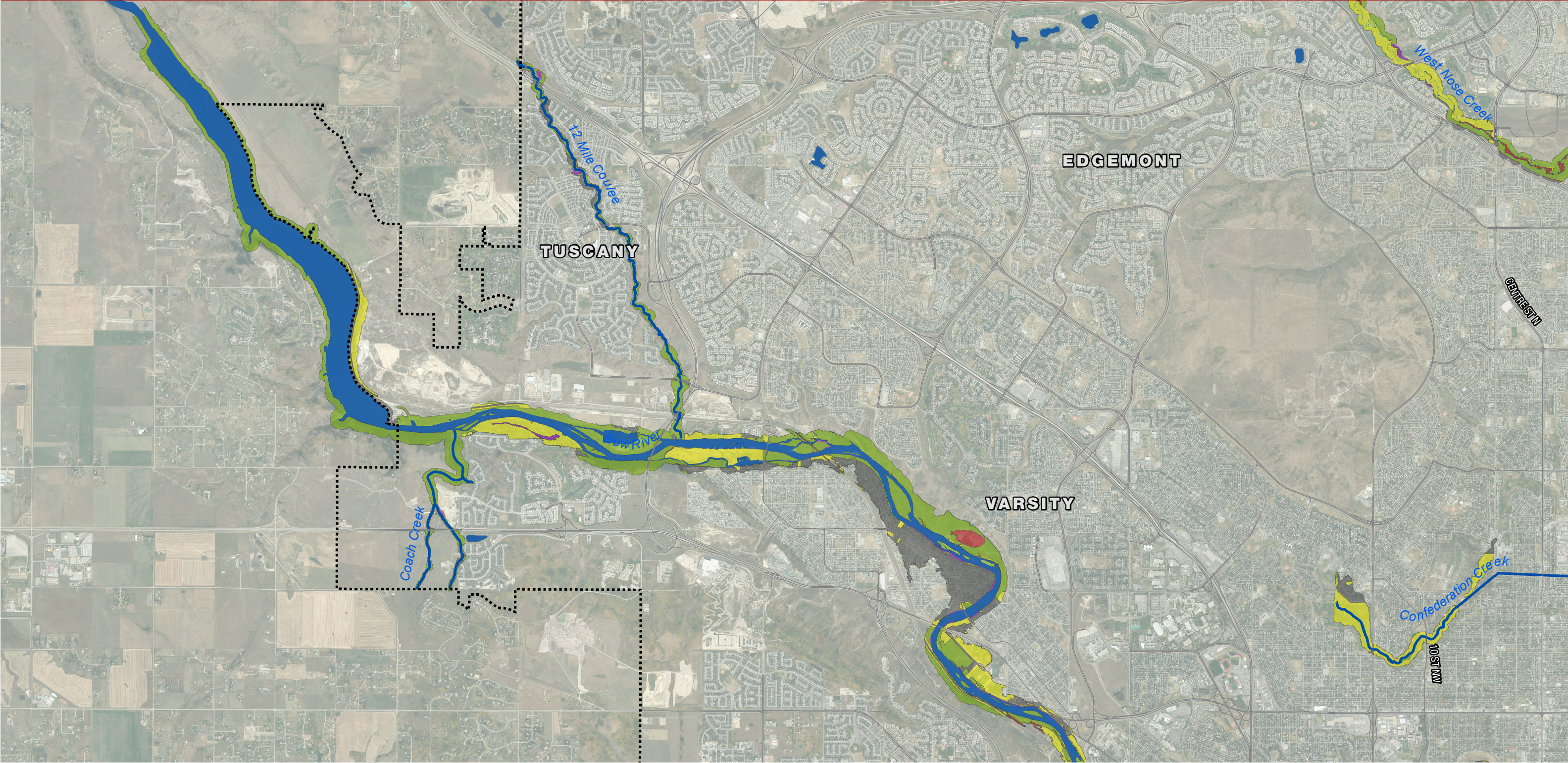
- **Conservation:** *Riparian areas retained for natural open space.*
- **Restoration:** *Riparian areas with suboptimal health / poor vegetative cover that are intended to be reclaimed or restored.*
- **Recreation:** *An area of high recreational value and use where activities do not significantly compromise ecosystem health or biodiversity.*
- **Flood and Erosion Control:** *Riparian areas subject to flood and erosion risk. The priority is to mitigate potential flood or erosion damage using the best options available.*
- **Developed:** *Riparian areas affected by development. If suitable opportunities arise (e.g., redevelopment, closure of a major industrial facility), these areas will be assessed for restoration.*

These categories were mapped along the riparian areas of major rivers and streams in Calgary by O2 Planning + Design Inc., on behalf of The City of Calgary Water Resources. This was achieved using a multi-criteria model that integrated a wide range of spatial data in a Geographic Information System (GIS). The model used over 47 layers of data to assign appropriate management categories to riparian areas throughout the city depending on their context. The assigned zone indicates the most important management focus for the area, although other values may be present. Observations conducted after the June 2013 flood generally confirmed the validity of the exercise.

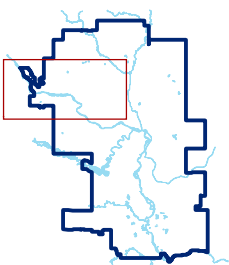
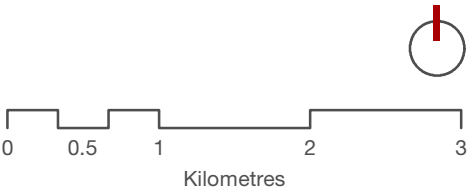
These maps provide a cohesive framework and a geospatial “vision” for the protection, management, and use of riparian areas in Calgary. They are intended to help support and provide guidance to decisions being made pertaining to riparian areas, including, but not limited to: river engineering, watershed planning, parks planning, flood resilience planning, and urban planning applications. The need for potential additional guidelines, processes, policies, and bylaws to help support the application of these maps is currently being assessed.

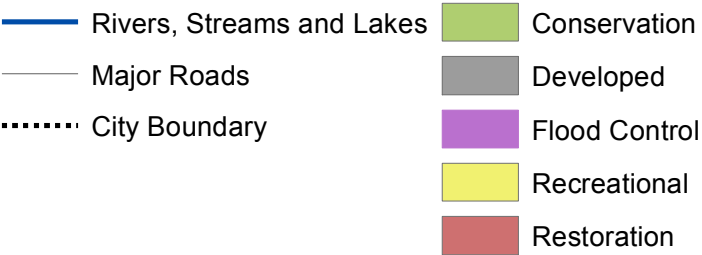
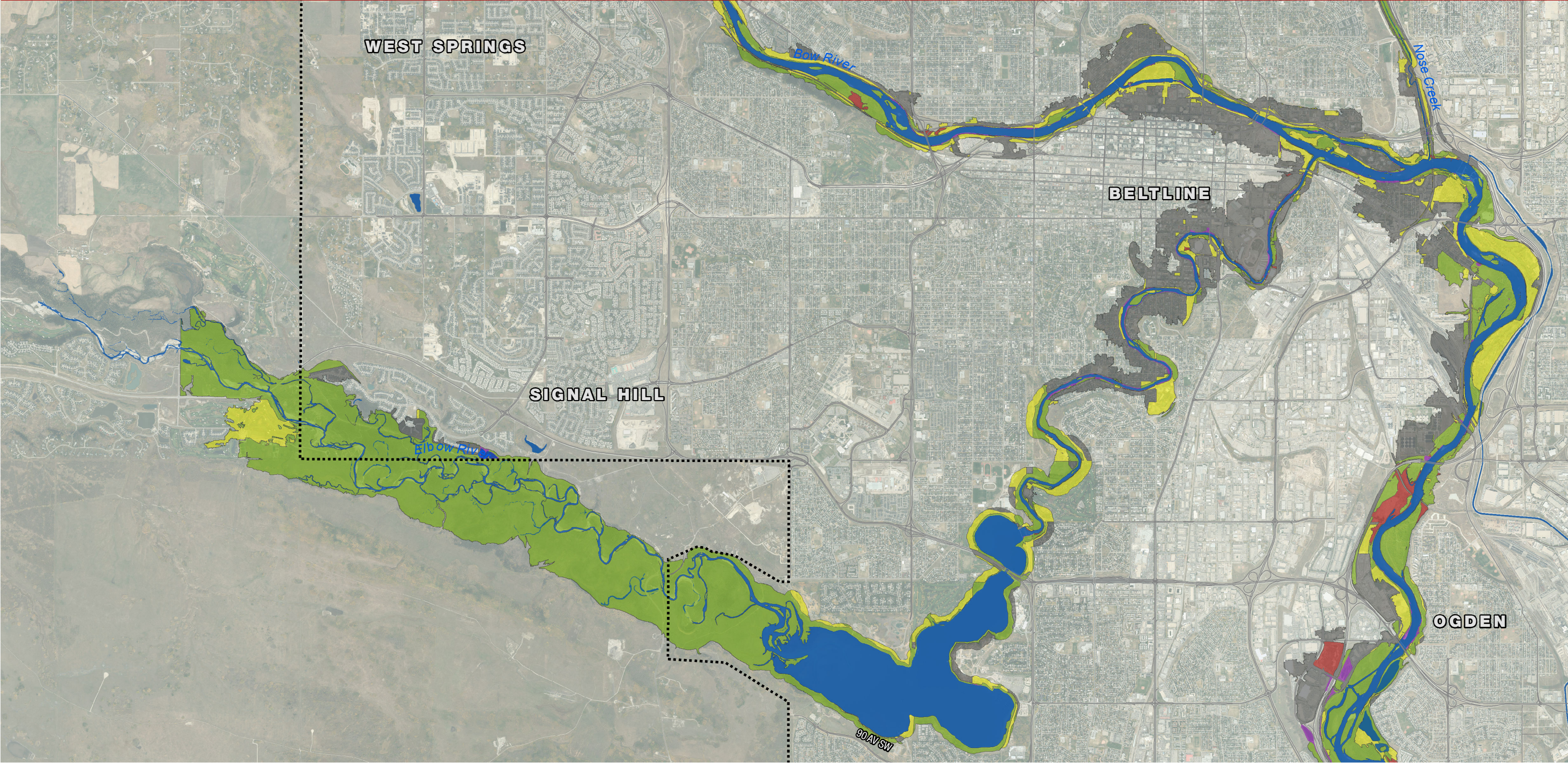
If you have any additional questions on these maps or would like to get involved to assist with implementation, please contact 311.



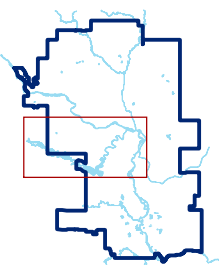
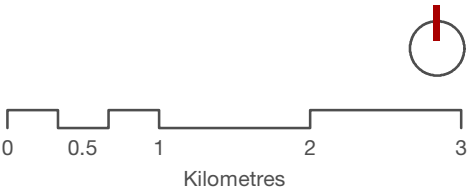


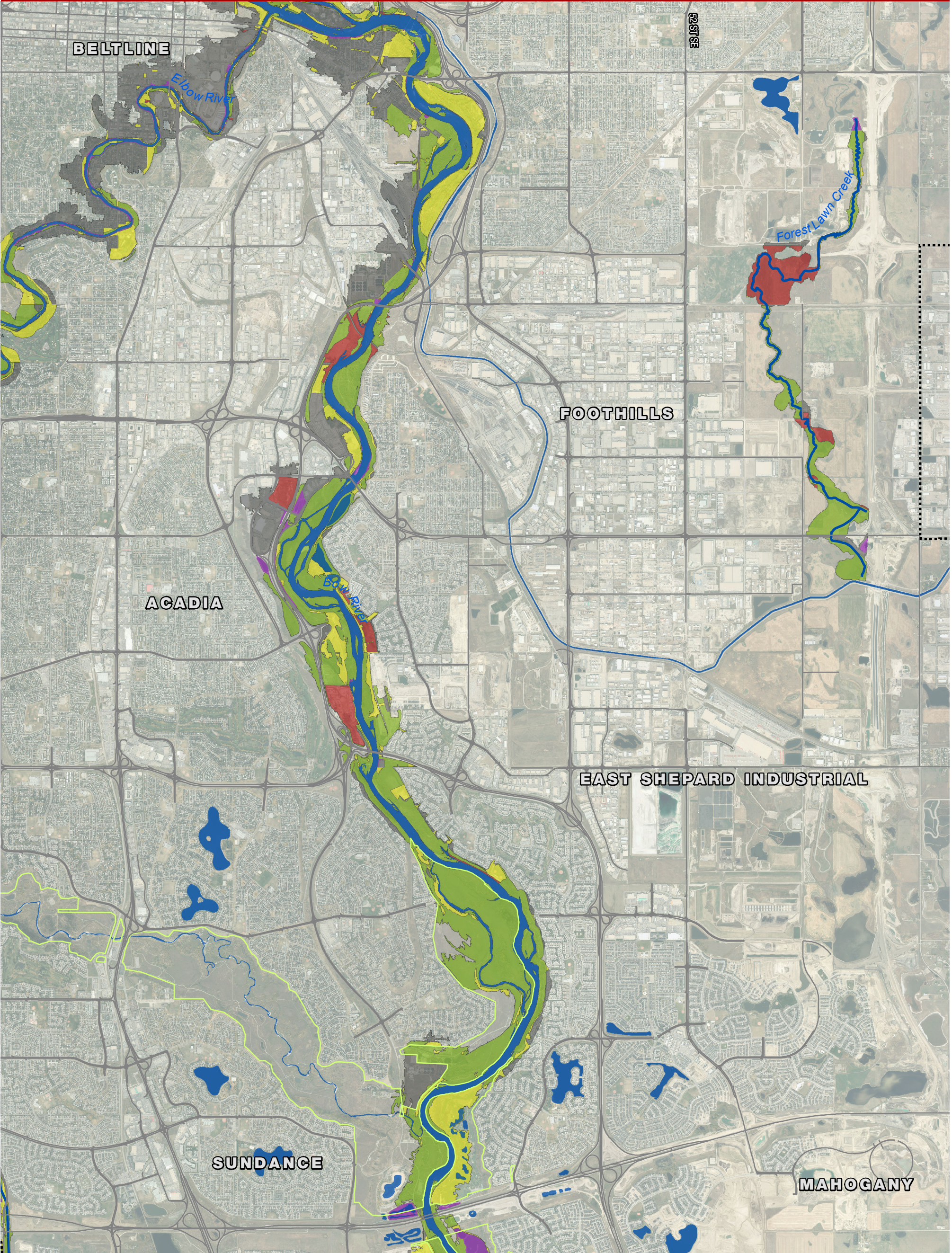
*Analysis of development impacts were not performed along lower order streams as they were out of scope



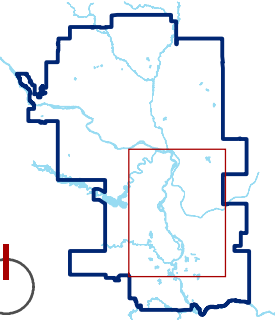


*Analysis of development impacts were not performed along lower order streams as they were out of scope





- Rivers, Streams and Lakes
- Major Roads
- City Boundary
- Fish Creek Provincial Park**
- Conservation
- Developed
- Flood Control
- Recreational
- Restoration

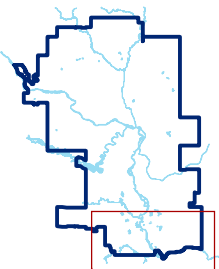
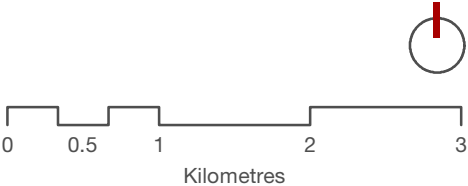


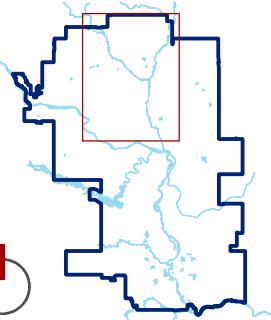
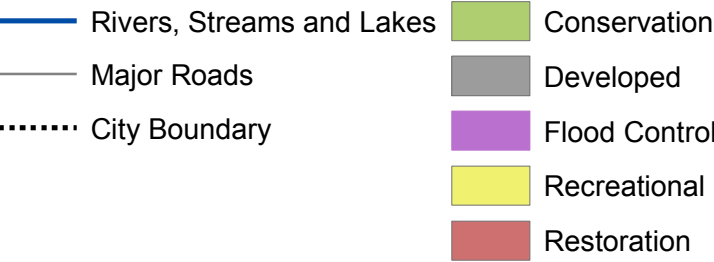
*Analysis of development impacts were not performed along lower order streams as they were out of scope
**Analysis was not performed in all of Fish Creek Provincial Park



*Analysis of development impacts were not performed along lower order streams as they were out of scope

**Analysis was not performed in all of Fish Creek Provincial Park





*Analysis of development impacts were not performed along lower order streams as they were out of scope