

# Local Drainage Improvement Project – Macleod Trail & 38 AVE SW

April 2021

## Background

The City of Calgary would like to share information on an upcoming local drainage improvement project in your area.

The *Local Drainage Improvements (LDI) Program* is an initiative that aims to better manage stormwater and/or run-off in smaller, limited areas. The City of Calgary is making improvements to the stormwater system in these localized areas in order to alleviate excessive pooling or flooding. Improvements include the installation of storm pipes, storm drains (or catch basins), and upgrading existing catchbasins and connecting pipes to increase the flow of stormwater into the system.

## Project details

At the intersection of Macleod Trail S.W. and 38 AV SW, The City of Calgary will be upgrading existing stormwater infrastructure to alleviate ponding at this low spot. Work will entail catch basin upgrades. Please see figure/map below.

## Work during COVID-19 pandemic

The City of Calgary continues to treat, test and deliver high-quality water to Calgarians during the COVID-19 pandemic. While we prioritize the delivery of essential services, our capital construction programs are moving forward where possible. These projects are critical to supporting current and future development. We're working closely with our partners and will continue to monitor the current situation and make adjustments as needed.

As with all capital projects, our priority is the health, safety and well-being of citizens, staff and contractors. We continue to monitor and when required, put in place new measures and protocols to ensure public health is always protected.

## Project timeline

Construction will commence in early June and will take approximately 3 weeks for completion. Construction crews will work Monday to Saturday between 7:00 am and 7:00 pm.

## Construction impacts

A single lane closure along southbound Macleod Trail S at the intersection will be required. Partial closures of 38 AV SW will also be required to complete the catch basin upgrades at the intersection. Parking restrictions will be in place on 38 AV SW adjacent to the laydown / work area. Traffic accommodations and detours will be in place. Please see Figure 1 below.

Mobilization / Lay down areas for construction equipment will be within the construction area and will be fenced, during non-work hours.

## Project Information

We are happy to answer your questions. If you have any questions or concerns regarding this work, please contact 311 and reference the Macleod Trail Local Drainage Improvement Project.

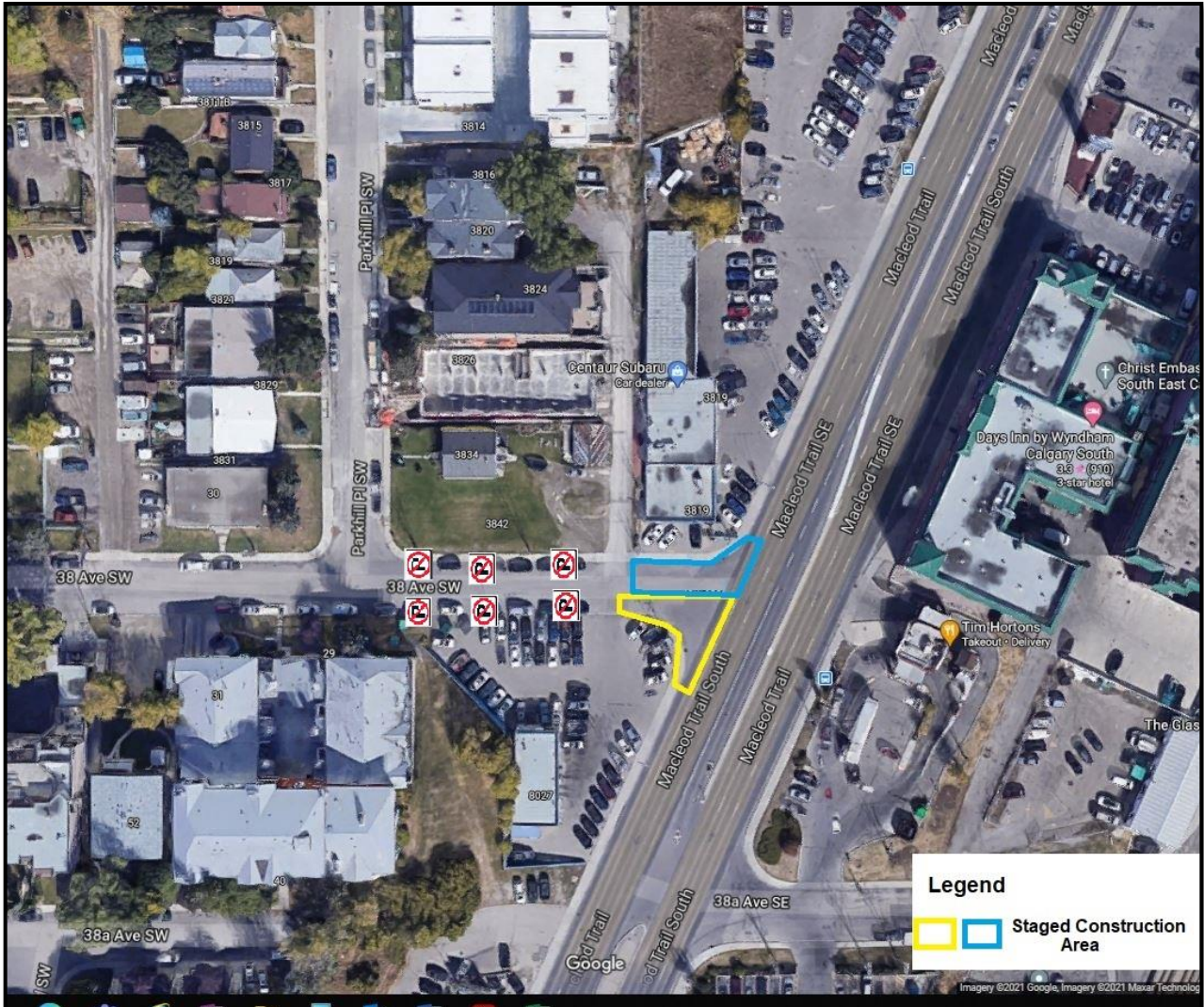


Figure 1: Macleod Trail Local Drainage Improvement

(Image Courtesy Google Maps)