

WATERMAIN VALVE NUMBERING FOR CONSTRUCTION DRAWINGS

In collaboration with BILD Calgary and Water Services, Water Resources has reviewed what is required for watermain valve numbering on Construction drawing submissions. In an effort to provide consistent information that can be easily attained and reviewed for valve operation by the Developers personnel and review/emergency valve operation by Water Services, a standardized labelling format has been developed.

The following method shall be adopted for labelling watermain valves on construction drawings:

- All watermain valves are to be labelled on water coversheet with a four digit number. Where two or more developers are in one developing area (ex. Evanston, Sage Hill, Homestead), the first digit will represent the developer. Valves from previous phases would be noted as EX on the cover sheet.
- Numbering is to be continuous throughout phases constructed by that developer.
- A valve numbering table is to be included on the water cover sheet that identifies the valve number, description and setting (ex. 1086 – Main Valve – Open).
- Description of valve would be one of the following:
 - Perimeter Valve – Main Valves that are in the phase that isolate the watermain from other phases.
 - Main Valve – Valves that are internal to the phase.
 - Hydrant Valves – Valves that only control flow to fire hydrants.
- For the first phase of development, starting valve number can be assigned in two ways:
 - a) Contact DA area technologist prior to submitting. DA Technologist will review valve numbers from surrounding Developers and assign starting valve number (ex. 3000).
 - b) Consultant submit preliminary construction drawing submissions numbering only the last three digits of valve numbers (ex. _004). DA Technologist will provide 1st digit upon review to ensure no conflicts with neighboring developments.

Note – if it is the consultant's intention to gain approval on the first submission, they should proceed with option a, as option b would require a resubmission to ensure all parties have the same cover sheet.
- After the construction drawings are approved, the Consulting Engineer shall publish a PDF of the stamped Water Cover sheet and submit to WaterServicesFODWDO&M@calgary.ca

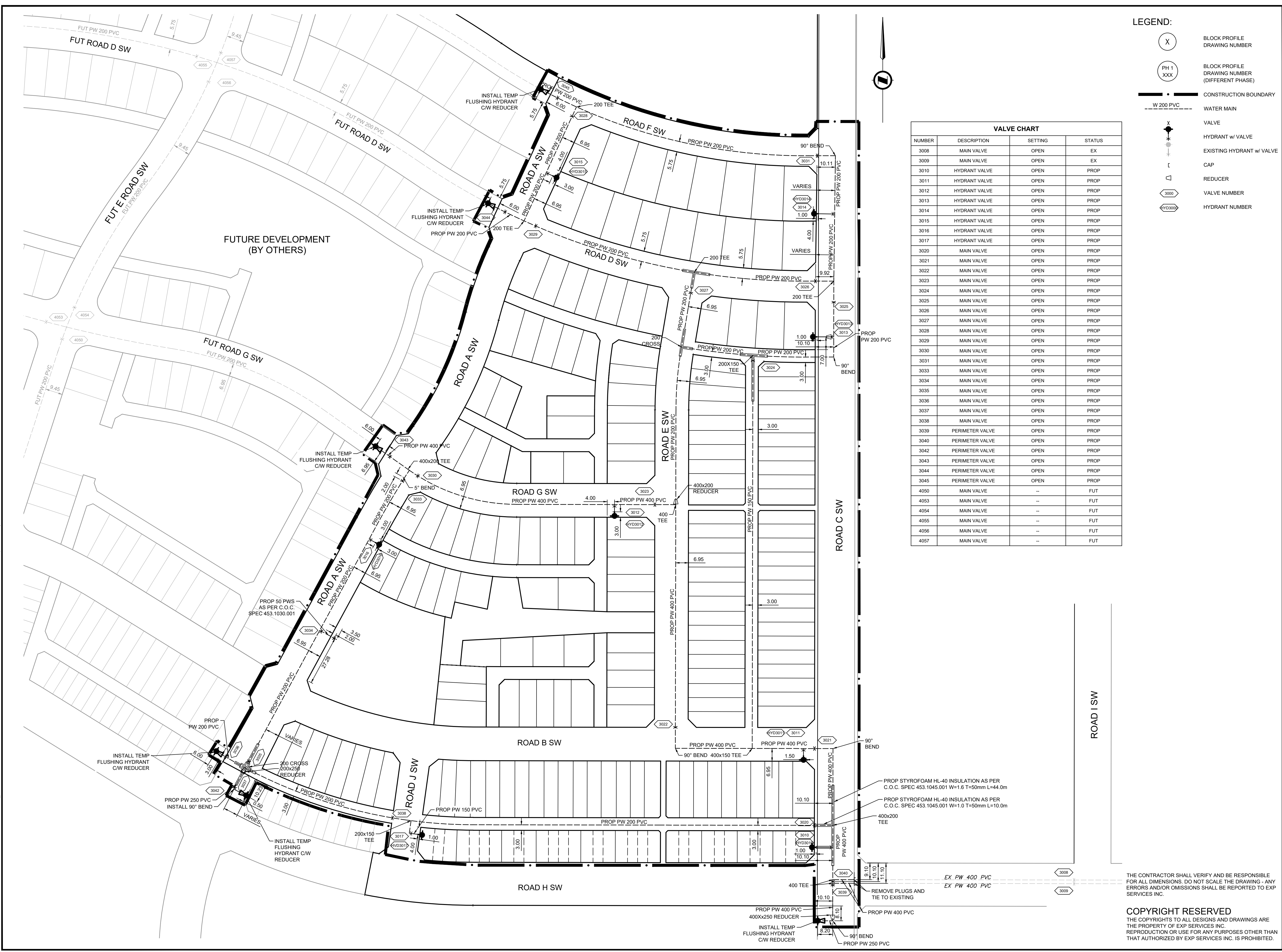
Implementation:

The valve numbering requirement will take effect on preliminary submissions that are submitted February 1st 2021 or later.

All construction drawings submissions prior to February 1st 2021 are not required to follow this labelling format, though implementation of this format can begin immediately if the Developer's consulting engineer deems it beneficial to the development.

For more information, please contact Zhong Xiang, Leader of Development Approvals at zhong.xiang@calgary.ca

FILE: E:\CGY\CGY-00047002-0160 EXECUTIONS DRAWINGS_LAND\CONCEPT\2020-08-19-BUILD VALVE NUMBERING.DWG DATE: August 28, 2020 4:16:53 PM



LEGEND:

- (X) BLOCK PROFILE DRAWING NUMBER
- (PH 1 XXX) BLOCK PROFILE DRAWING NUMBER (DIFFERENT PHASE)
- W 200 PVC --- WATER MAIN
- X VALVE
- HYDRANT w/ VALVE
- EXISTING HYDRANT w/ VALVE
- ∩ CAP
- ∩ REDUCER
- 3000 VALVE NUMBER
- ∩3000 HYDRANT NUMBER

VALVE CHART

| NUMBER | DESCRIPTION | SETTING | STATUS |
|--------|-----------------|---------|--------|
| 3008 | MAIN VALVE | OPEN | EX |
| 3009 | MAIN VALVE | OPEN | EX |
| 3010 | HYDRANT VALVE | OPEN | PROP |
| 3011 | HYDRANT VALVE | OPEN | PROP |
| 3012 | HYDRANT VALVE | OPEN | PROP |
| 3013 | HYDRANT VALVE | OPEN | PROP |
| 3014 | HYDRANT VALVE | OPEN | PROP |
| 3015 | HYDRANT VALVE | OPEN | PROP |
| 3016 | HYDRANT VALVE | OPEN | PROP |
| 3017 | HYDRANT VALVE | OPEN | PROP |
| 3020 | MAIN VALVE | OPEN | PROP |
| 3021 | MAIN VALVE | OPEN | PROP |
| 3022 | MAIN VALVE | OPEN | PROP |
| 3023 | MAIN VALVE | OPEN | PROP |
| 3024 | MAIN VALVE | OPEN | PROP |
| 3025 | MAIN VALVE | OPEN | PROP |
| 3026 | MAIN VALVE | OPEN | PROP |
| 3027 | MAIN VALVE | OPEN | PROP |
| 3028 | MAIN VALVE | OPEN | PROP |
| 3029 | MAIN VALVE | OPEN | PROP |
| 3030 | MAIN VALVE | OPEN | PROP |
| 3031 | MAIN VALVE | OPEN | PROP |
| 3033 | MAIN VALVE | OPEN | PROP |
| 3034 | MAIN VALVE | OPEN | PROP |
| 3035 | MAIN VALVE | OPEN | PROP |
| 3036 | MAIN VALVE | OPEN | PROP |
| 3037 | MAIN VALVE | OPEN | PROP |
| 3038 | MAIN VALVE | OPEN | PROP |
| 3039 | PERIMETER VALVE | OPEN | PROP |
| 3040 | PERIMETER VALVE | OPEN | PROP |
| 3042 | PERIMETER VALVE | OPEN | PROP |
| 3043 | PERIMETER VALVE | OPEN | PROP |
| 3044 | PERIMETER VALVE | OPEN | PROP |
| 3045 | PERIMETER VALVE | OPEN | PROP |
| 4050 | MAIN VALVE | - | FUT |
| 4053 | MAIN VALVE | - | FUT |
| 4054 | MAIN VALVE | - | FUT |
| 4055 | MAIN VALVE | - | FUT |
| 4056 | MAIN VALVE | - | FUT |
| 4057 | MAIN VALVE | - | FUT |

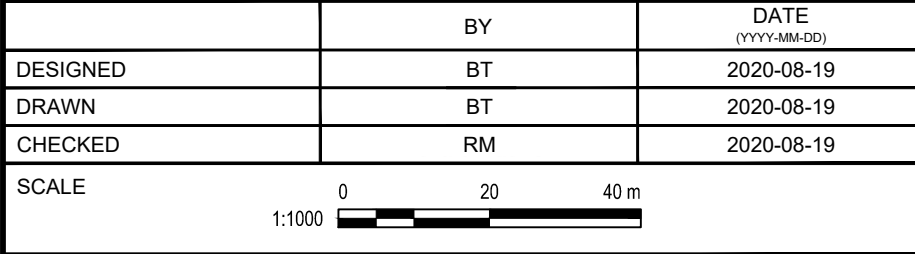
- NOTES**
- GENERAL NOTES (GN):**
- ALL PIPE SIZES ARE IN MILLIMETRES AND ALL DIMENSIONS ARE IN METRES UNLESS OTHERWISE NOTED.
 - ALL COORDINATES AND DISTANCES ARE BASED ON 3TM COORDINATE SYSTEM (NAD 83).
 - ALL CONSTRUCTION AND MATERIALS TO BE IN ACCORDANCE WITH CURRENT CITY OF CALGARY SPECIFICATIONS.
 - NO CONSTRUCTION SHALL PROCEED UNTIL ALL APPROPRIATE REGULATORY APPROVALS ARE OBTAINED.
 - ALL PLANS SUBJECT TO TERMS OF THE DEVELOPMENT AGREEMENT/PERMIT AND THE CONTRACT DOCUMENTS.
 - ANY ERRORS OR DISCREPANCIES TO BE REPORTED TO THE ENGINEER PRIOR TO COMMENCEMENT OF CONSTRUCTION.
 - ALL FILL MATERIAL SHALL BE PLACED AND COMPACTED TO CITY OF CALGARY SPECIFICATIONS.
 - ALL ELEVATIONS ARE GEODETIC.
 - CONTRACTOR TO BE RESPONSIBLE FOR LOCATION AND ALIGNMENT OF ALL EXISTING UTILITIES.
 - CONTRACTOR TO TAKE CARE WHEN WORKING NEAR EXISTING INFRASTRUCTURE.
 - CONTRACTOR TO COORDINATE ALL CONSTRUCTION WITH ASSOCIATED OWNER(S) WHEN WORKING NEAR EXISTING INFRASTRUCTURE.
 - EXISTING SURFACE FEATURES TO BE RESTORATED TO CONDITIONS PRECEDING CONSTRUCTION WHERE EXISTING CONDITIONS WILL BE MAINTAINED.
 - COMBINED FACTOR APPLIED=0.999723 (1.0002727077).
 - ALL NORTHING-EASTING COORDINATES ARE AT SEA LEVEL.

- WATER MAIN NOTES (WMN):**
- ALL WATER MAIN TO BE PVC DR18 UNLESS OTHERWISE NOTED.
 - ALL PIPE BACKFILL SHALL SATISFY THE MINIMUM WATERWORKS SPECIFICATIONS WITH CLASS 1A BEDDING.
 - MINIMUM DEPTH TO PIPE CROWN SHALL BE 3.00 METRES.
 - ALL WATER MAINS AND APPURTENANCES MUST BE PROPERLY TESTED PRIOR TO UTILIZATION.
 - PRIOR TO COMMENCING AND DURING ANY PRESSURE TESTING, CHLORINATING, OR FLUSHING OF MAINS, A WATER SERVICES INSPECTOR MUST BE ON SITE. NO HYDRANTS ARE TO BE USED FOR CONSTRUCTION WATER UNLESS OTHERWISE AUTHORIZED.
 - EXACT LOCATION OF ALL EXISTING INFRASTRUCTURE (HORIZONTAL AND VERTICAL) TO BE CONFIRMED IN THE FIELD BEFORE CONSTRUCTION BEGINS.
 - WATER INFRASTRUCTURE TO MAINTAIN A MINIMUM 3.00 SEPARATION FROM TREES, STREET LIGHTS, AND CATCH BASINS.
 - ALL EXISTING WATER MAINS ARE OPERATIONAL AND MUST BE MAINTAINED AS SUCH DURING CONSTRUCTION OR SUITABLE ALTERNATE SERVICE CONDITIONS PROVIDED.
 - ALL EXISTING WATER MAINS SHOWN ARE PART OF OTHER SCOPES OF DEVELOPMENT AND INCLUDED IN SEPARATE DRAWING SUBMISSION SETS.
 - FOR COLLECTOR ROAD TRAFFIC VOLUMES & GREATER, INSTALL DEEP VALVE BOX LIDS AS PER CITY OF CALGARY STANDARD SPECIFICATIONS.
 - WATERWORKS CONSTRUCTION SPEC 453.1006.006p2.
 - WHERE SERVICES ARE ALLOWED AT THE PROPERTY LINE, INSULATE LOTS SERVICES (SANITARY, STORM AND WATER) WITH STYROFOAM HIGH LOAD - 40 INSULATION PER CITY OF CALGARY WATERWORKS CONSTRUCTION SPEC 453.1045.001. INSULATION MUST EXTEND FROM THE MAIN TO THE BUILDING FOUNDATION.



| | | | | |
|-----|---------------------------|-------------------|----|------|
| 0 | CITY BULLETIN INFORMATION | 2020-08-19 | BT | RM |
| NO. | DESCRIPTION | DATE (YYYY-MM-DD) | BY | APPD |

| | | |
|----------|----|-------------------|
| DESIGNED | BT | DATE (YYYY-MM-DD) |
| DRAWN | BT | 2020-08-19 |
| CHECKED | RM | 2020-08-19 |



PROJECT

WATERMAIN VALVE NUMBERING FOR CONSTRUCTION DRAWINGS SEPTEMBER 2020 CITY BULLETIN

SEC. -- TWP. -- RGE. -- W.4th M

SHEET TITLE

WATER MAINS

| | | |
|---|-------------------|-------------|
| FILE NO. CGY-00047002-XX-Valve Numbering.dwg | ENG DWG NO. | |
| SHEET ID. C-104 | SHEET NO. | |
| BY | DATE (YYYY-MM-DD) | PROFILE NO. |

THE CONTRACTOR SHALL VERIFY AND BE RESPONSIBLE FOR ALL DIMENSIONS. DO NOT SCALE THE DRAWING - ANY ERRORS AND/OR OMISSIONS SHALL BE REPORTED TO EXP SERVICES INC.

COPYRIGHT RESERVED

THE COPYRIGHTS TO ALL DESIGNS AND DRAWINGS ARE THE PROPERTY OF EXP SERVICES INC. REPRODUCTION OR USE FOR ANY PURPOSES OTHER THAN THAT AUTHORIZED BY EXP SERVICES INC. IS PROHIBITED.