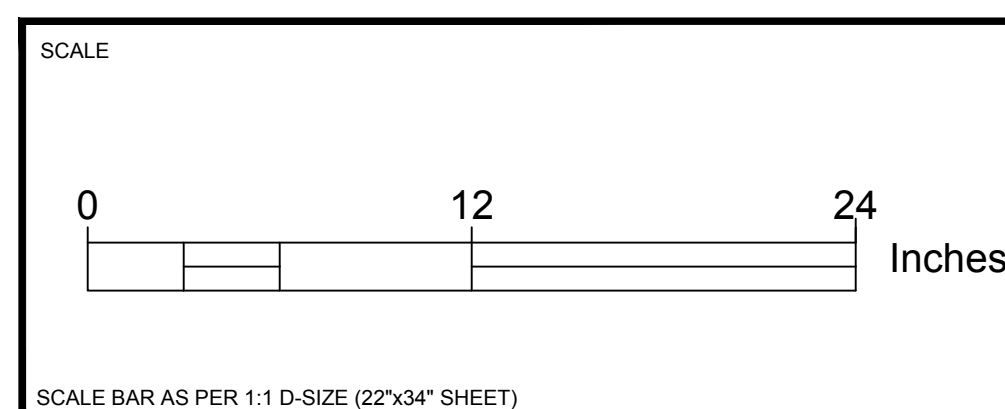


SAMPLE PHOTO

LF Donut Specification Sheet	
Description: BMP CB Donut is a bright orange and yellow porous foam filled ring attached to filter fabric. The product wraps around and secured to a removed	
Foam Cover Fabric:	R 2283 HDPE Monofilament (High Density Polyethylene)
Body Fabric:	Black/Grey High Strength Woven Filter Fabric
Foam	4" Height Open Cell Foam
Grate Size	Fits grates: 24"x16", 21"x18" (custom sizes also available)
Grab Tensile	ASTM-D-4632 – 315 lb Compressed Size: 8" x 10" x 4"
Compressed Size	8" x 10" x 4"
Expanded Size	Varies depending on Part Number
Permittivity	ASTM-D-4491: 0.70 (s-1)
Water Flow Rate	ASTM-D-4491: 50+ gal/min/ft2
Optional	CIF6048 Curb Inlet Filter for grates with Curb Inlets

Approximate Weight/Dimensions (varies with size)		
Size Deployed (approx.)	Sizes Vary	1-2 lbs
Shipping Size (per bag of 12)	36" x 14" x 20"	12-24 lbs
Per Pallet (192 Pieces)	40" x 48" x 85"	220-460 lbs



REV	DATE	REVISION DESCRIPTION
0	2019/APRIL	FOR INFORMATION

DESIGNED _____
 DRAWN _____
 CHECKED _____
 APPROVED _____

PROFESSIONAL SEAL



LOW FLOW DONUT		
FILE No. LF Donut.dwg	PROJECT No. _____	
DRAWING No. _____	FIGURE 1.0	0