



## Shaganappi Pump Station Replacement Construction Update – August 2021

### Recent progress

Over the last few months the building exterior has been completed. Inside the building, start-up testing on the facility's systems and equipment has been ongoing and is nearly complete. The equipment testing was noisy at times and we want to thank park users and nearby residents and businesses for their patience during this important work.



*Looking northwest at the completed exterior*



*Looking at the north face of the building visible from Bowness Road N.W.*



*Looking west at Montgomery View N.W. and the pump station building*

## Landscaping

Before landscaping is planted around the pump station, limestone – a non-conductive material required by building code – will be applied around the perimeter of the building.

Landscaping for the site includes grass with some mulch and cedar edging between planted areas. Trees will be planted along Montgomery View N.W. and between the pump station and the Edworthy Park Parking Lot. Landscaping is expected to be complete in September.

## Montgomery View N.W. improvements

Montgomery View N.W. has been paved including new curb and gutter. The Bowness Road / Shaganappi Trail intersection medians have been re-poured with ramps added for better accessibility.



*Looking west at fresh pavement on Montgomery View N.W.*



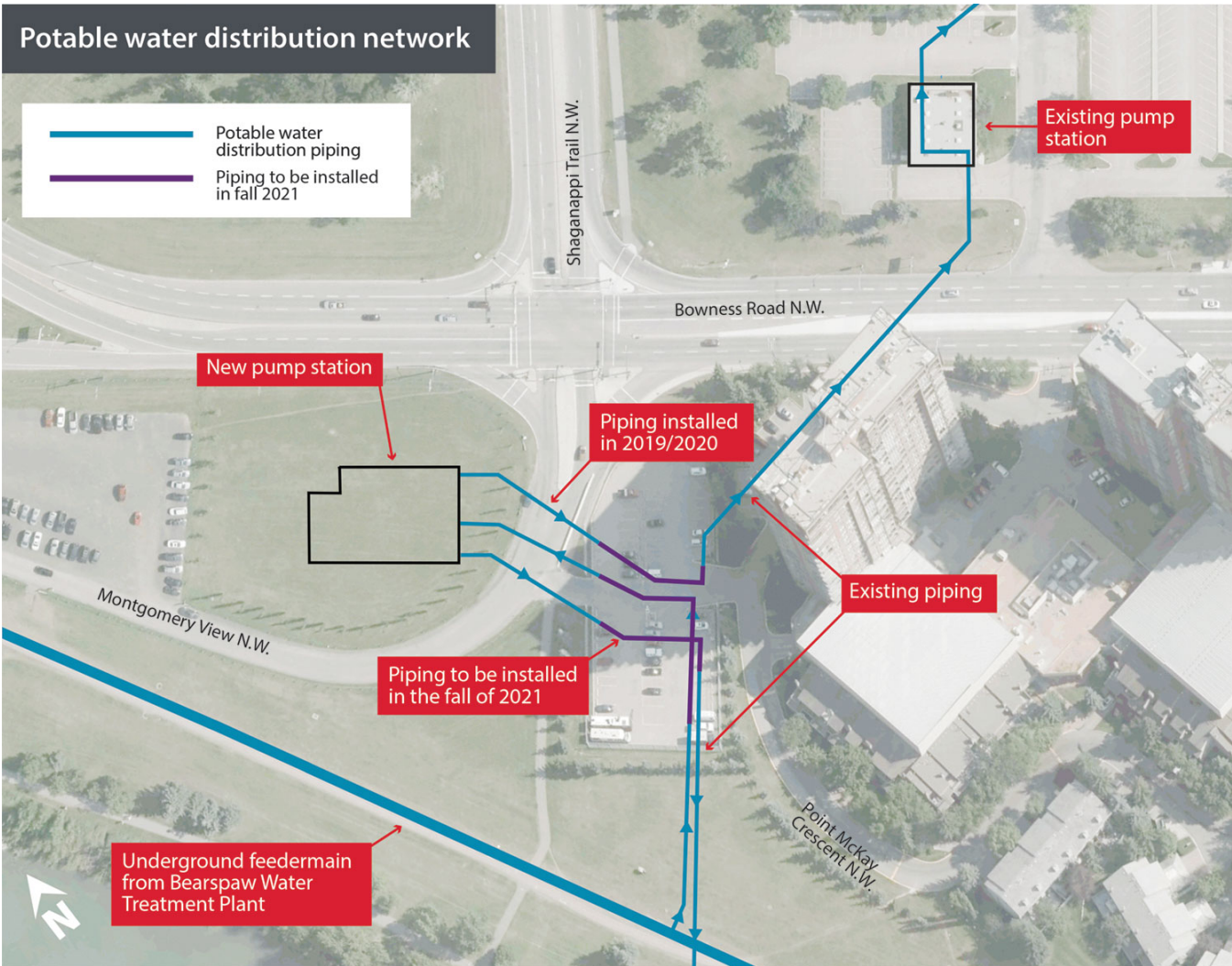
*Throwback to Montgomery View N.W. in 2019*



*Looking east at the new medians at the Shaganappi Trail & Bowness Road / Montgomery View N.W. intersection*

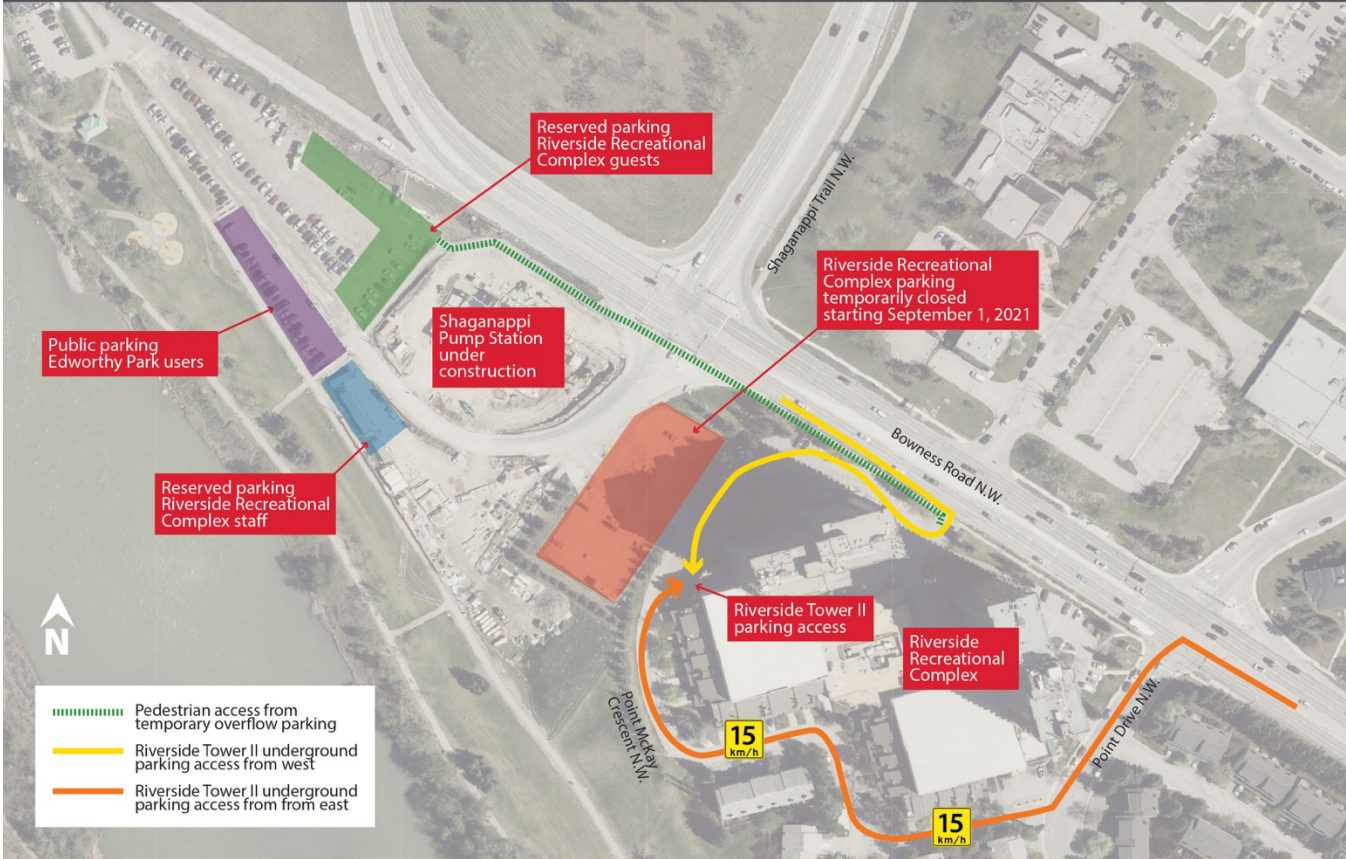
### **Upcoming: temporary parking changes starting September 1**

Starting in September, underground work to connect the new pump station to the existing water distribution system will begin.



The Riverside Recreational Complex overflow parking lot will be temporarily closed to accommodate the underground work, which is expected to take approximately four months.

## Temporary parking changes



During this time, some areas in the Edworthy Park parking lot will be allocated for use by Riverside guests. Additional parking has also been provided for use by Edworthy Park users while the closure is in place. After the closure, the additional public parking will remain permanently for public use. This results in 45 more parking stalls than when the project began.

### Riverside Tower II underground parking access

There will be no access through the Riverside overflow parking lot to the Riverside Towers. Drivers will need to use Point Drive N.W. or Point McKay Crescent N.W. (shown in the figure above).

### What to expect

Minimizing disruptions and impacts to adjacent residents, businesses and park users will be a priority.

- On-site signage will be installed to clearly delineate the various parking areas



- Wayfinding signage for Riverside Recreational Complex and Riverside overflow parking will be implemented on adjacent roads and within the parking lot
- Work will be done as efficiently as possible and in accordance with bylaw requirements (noise, hours of work, etc.) whenever possible

### Project information or questions

Please contact 311 with any questions or concerns about this work. For more information visit [calgary.ca/shaganappiPS](https://calgary.ca/shaganappiPS).

**Thank you for your patience during this final phase of construction.** By early 2022, the new pump station is expected to be fully commissioned and pumping water. Once the new pump station is in service, the existing pump station will be decommissioned.